



**PUMP MODEL
RS5A31-B**

**MANUAL
PART 2 of 3**

**PARTS
LIST**

**WITH
PERFORMANCE CURVE**

THE GORMAN-RUPP COMPANY • MANSFIELD, OHIO

GORMAN-RUPP OF CANADA LIMITED • ST. THOMAS, ONTARIO, CANADA Printed in U.S.A.

©Copyright by the Gorman-Rupp Company

PERFORMANCE CURVE – SECTION A

RECORDING MODEL AND SERIAL NUMBERS

Please record the pump model and serial number in the spaces provided below and in the separate Installation/Operation Manual accompanying your pump. Your Gorman-Rupp distributor needs this information when you require parts or service.

Pump Model: _____

Serial Number: _____

WARRANTY INFORMATION

The pump warranty is provided as part of Gorman-Rupp's support program for customers who operate and maintain their equipment as described in this manual and other accompanying literature. Please note that should the equipment be abused or modified to change its performance beyond the original factory specifications, the warranty will become void and any claim will be denied.

PERFORMANCE CURVES

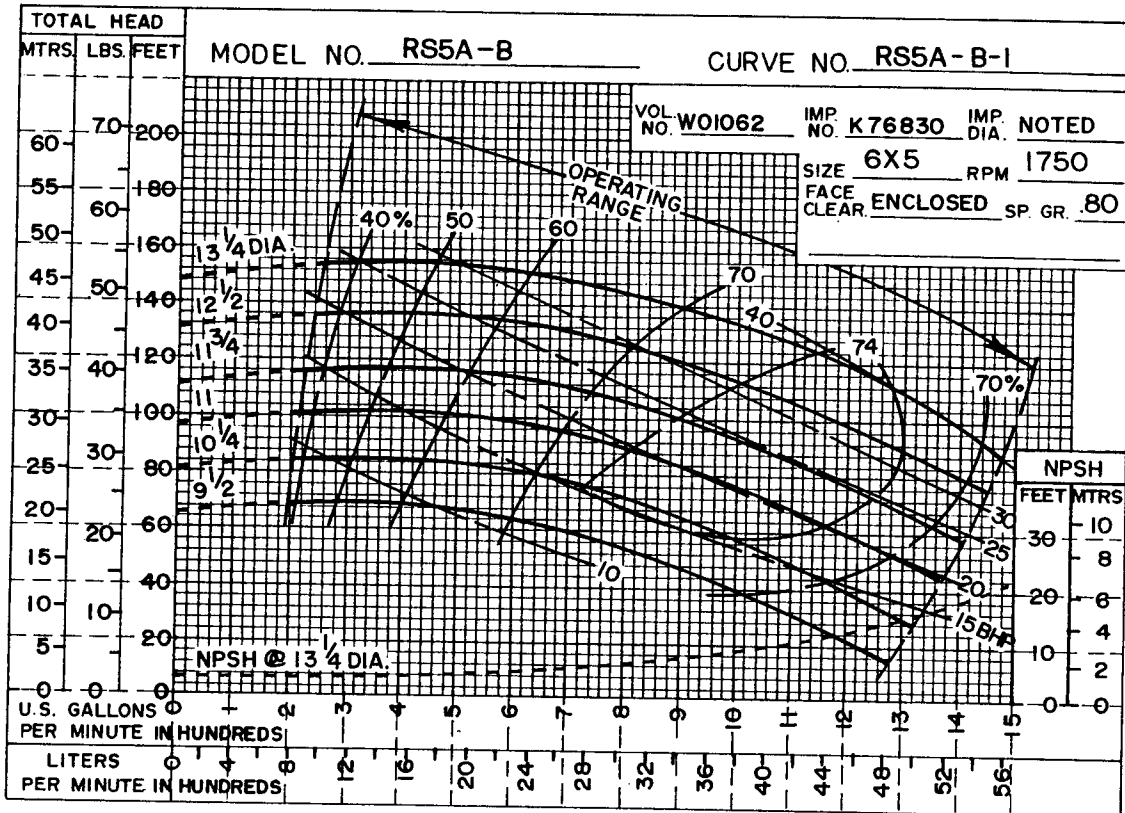
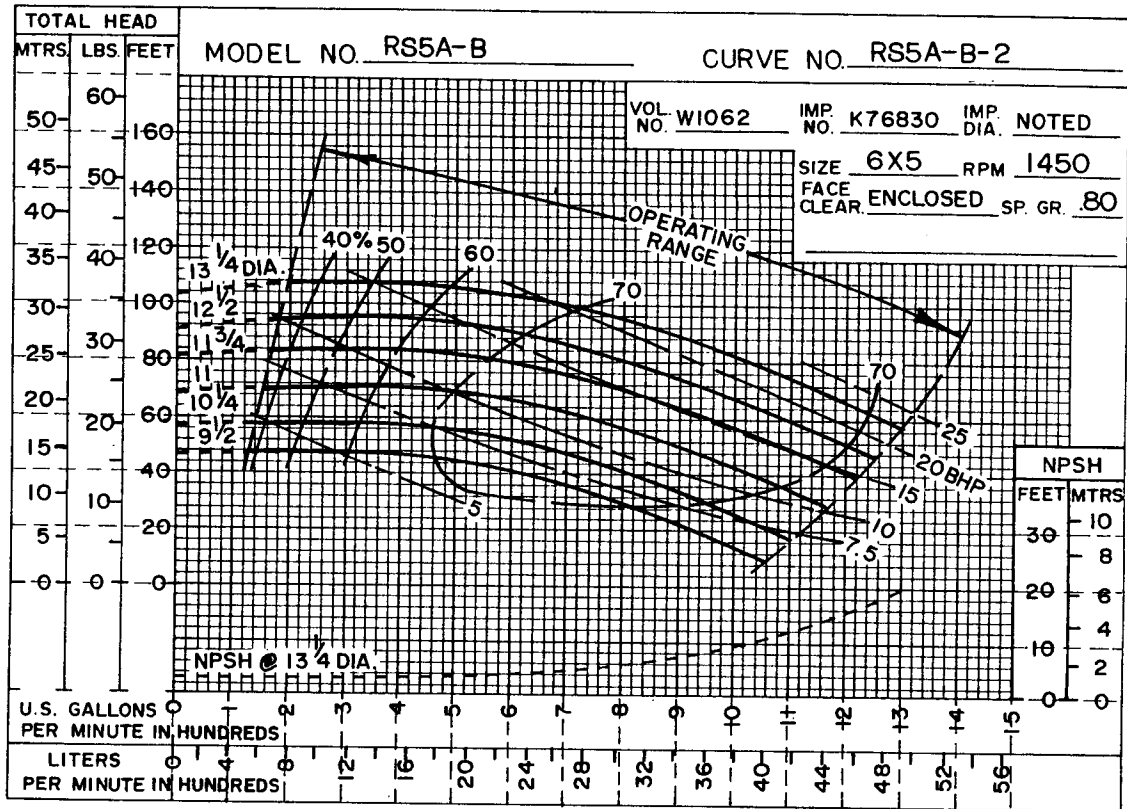
The performance curves on the following page are based on 70° F (21° C) clear water at sea level, corrected to 0.80 specific gravity, with minimum suction lift. Since pump installations are seldom identical, your performance may be different due to such factors as viscosity, specific gravity, elevation, temperature, and impeller trim.

If your pump serial number is followed by an "N", your pump is **NOT** a standard production model. Contact the Gorman-Rupp Company to verify performance or part numbers.

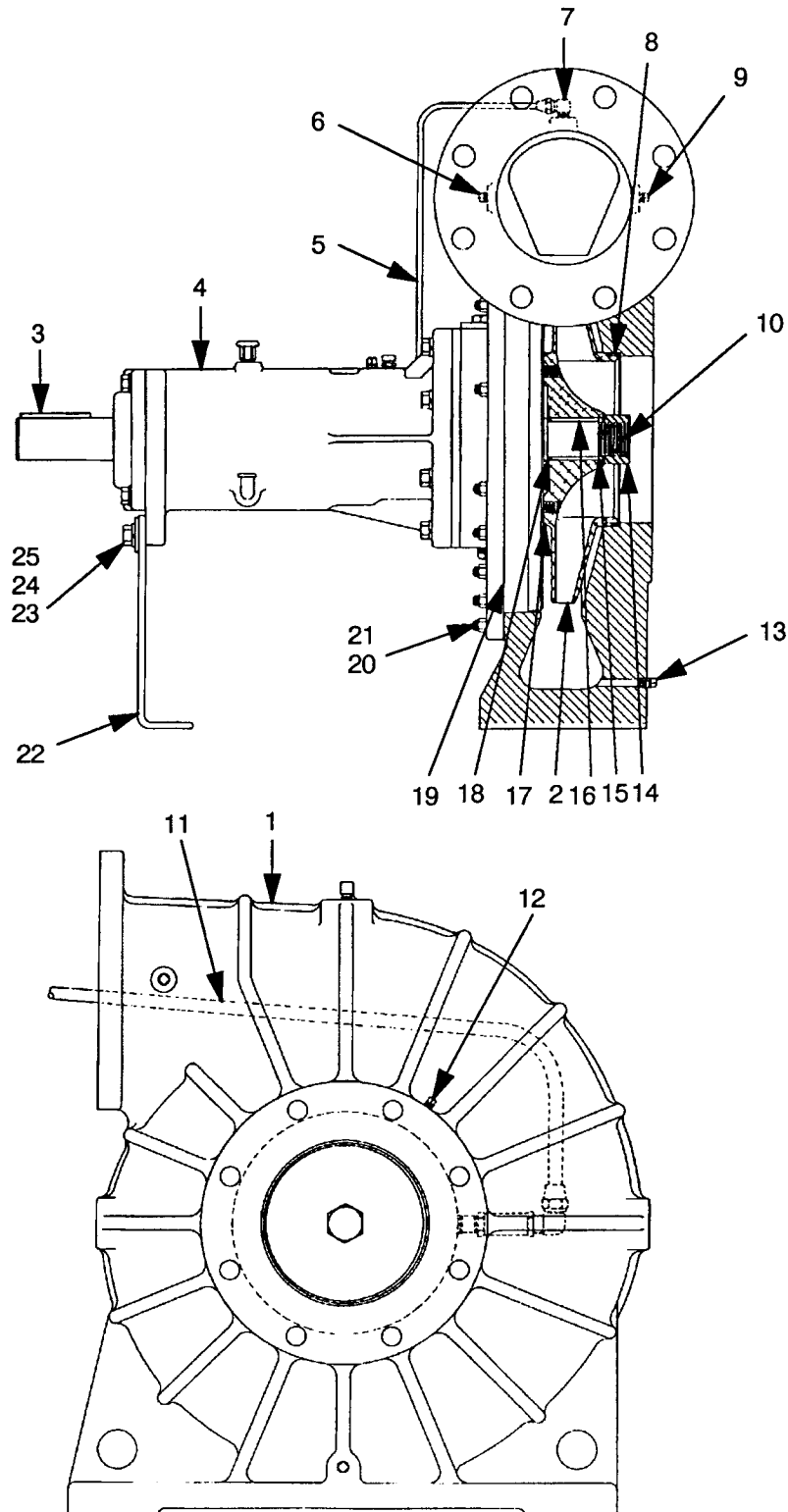


Pump speed and operating condition points must be within the continuous performance range shown on the curve(s).

This Page Intentionally Blank



Performance Curve - Model RS5A31-B



S/N 1074459 Up
PUMP ISSUE 1

PARTS LIST
Pump Model RS5A31-B

If your pump serial number is followed by an "N", your pump is **NOT** a standard production model. Contact the Gorman-Rupp Company to verify part numbers.

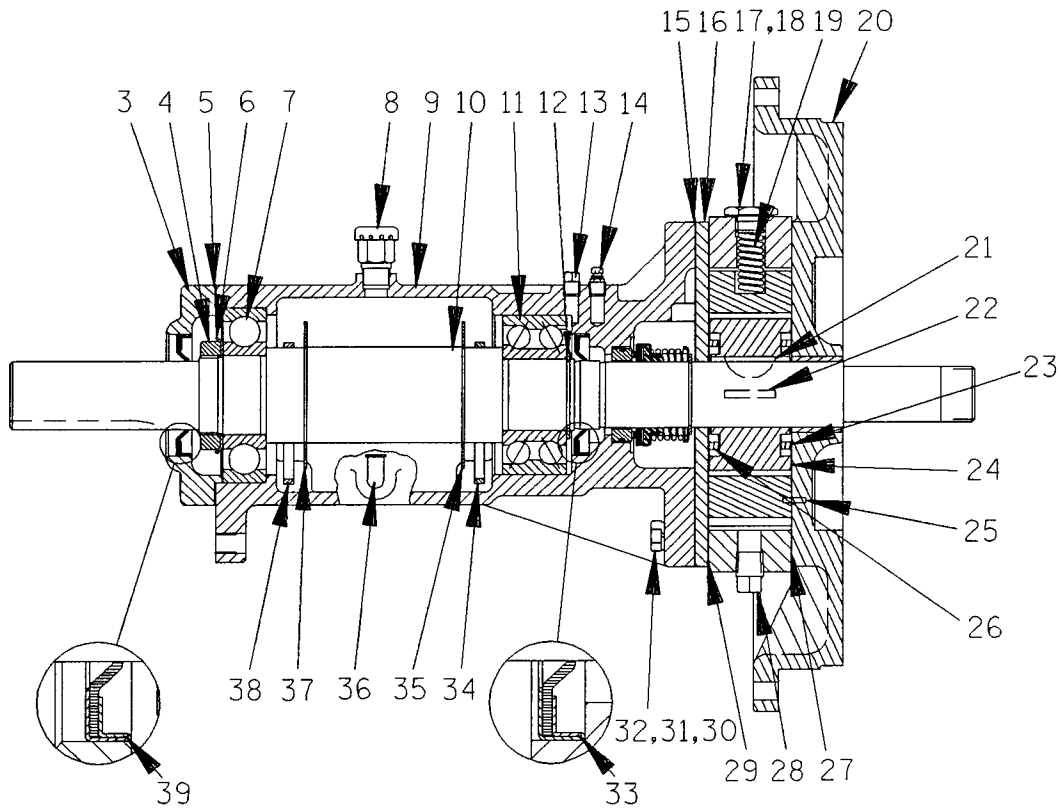
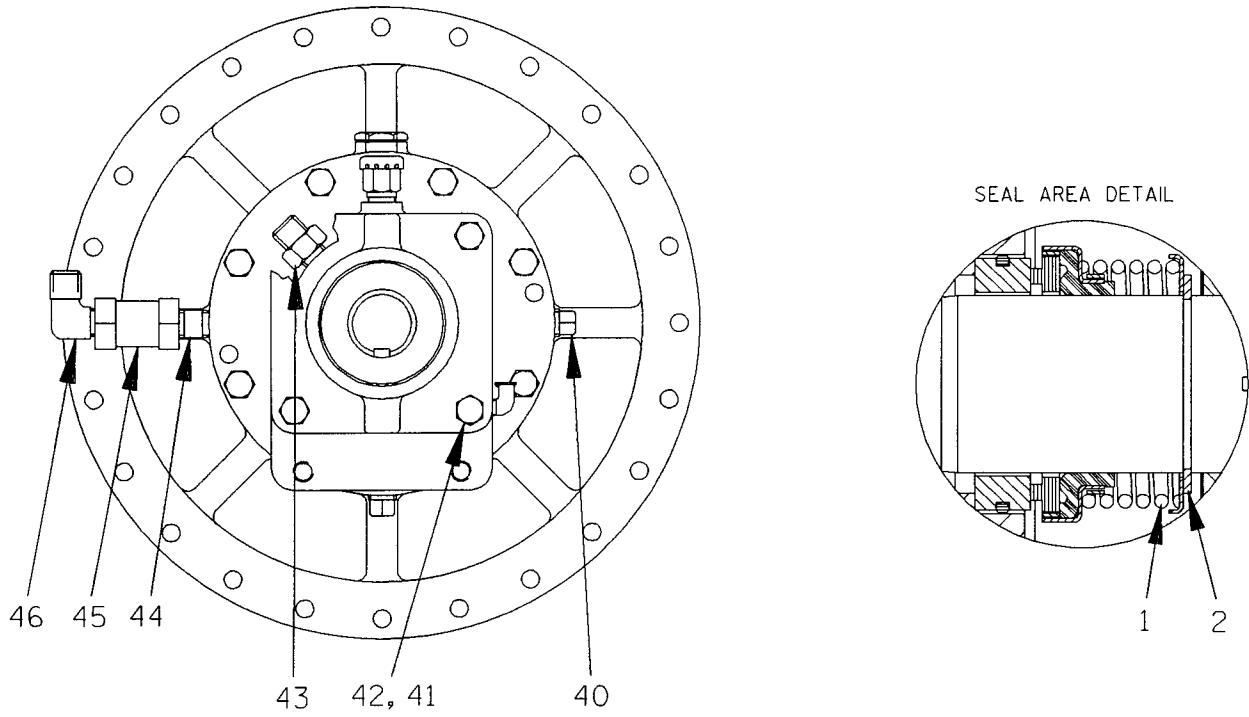
ITEM NO.	PART NAME	PART NUMBER	MAT'L CODE	QTY	ITEM NO.	PART NAME	PART NUMBER	MAT'L CODE	QTY
1	PUMP CASING	W01062	11010	1	23	HEX HD CAPSCREW	B0805	15991	2
2 *	IMPELLER	K76830	13040	1	24	LOCKWASHER	J08	15991	2
3 *	SHAFT KEY	N0611	15990	1	25	FLAT WASHER	K08	15991	2
4	BRG HOUSING ASSY	44143-091	-----	1	NOT SHOWN:				
5	SEAL TUBE ASSY	N19188	-----	1	* SUCT FLANGE GASKET	1679G	18000	1	
6	PIPE PLUG	P02	15079	1	* DISCH FLANGE GASKET	1678G	18000	1	
7	MALE ELBOW	26351-122	-----	1	MALE ELBOW	26351-106	-----	1	
8 †	WEAR RING	NOT AVAILABLE		1	NAME PLATE	2613DZ	13990	1	
9	PIPE PLUG	P02	15079	1	DRIVE SCREW	BM#04-03	15990	2	
10	SPIRAL PIN	21137-079	-----	1	ROTATION DECAL	2613M	-----	1	
11	PRIMING TUBE ASSY	T08816	-----	1	SUCTION STICKER	6588AG	-----	1	
12	PIPE PLUG	P02	15079	1	DISCHARGE STICKER	6588BJ	-----	1	
13	PIPE PLUG	P02	15079	1	BRG LUBE DECAL	38816-074	-----	1	
14	IMPELLER NUT	K88233	15111	1	INSTRUCTION TAG	38817-011	-----	1	
15	IMPELLER WASHER	K76643	15991	1	OPTIONAL:				
16 *	IMPELLER KEY	K79330	16120	2	DISCHARGE CHECK VALVE				
17 †	WEAR RING	NOT AVAILABLE		1	-CHECK VALVE	26642-106	-----	1	
18	IMPELLER WASHER	K76643	15991	1	-HEX HD CAPSCREW	B1212	15991	8	
19 *	PUMP CASING GASKET	N15237-21	20000	1	-GASKET	38682-208	-----	1	
20	STUD	C0606 1/2	15991	24	-HEX NUT	D12	15991	8	
21	HEX NUT	D06	15991	24	BRONZE IMPELLER	K76830	14150	1	
22	BRG SUPPORT	R12852-02	15990	1					

* INDICATES PARTS RECOMMENDED FOR STOCK

Above Serial Numbers Do Not Apply To Pumps Made In Canada.

CANADIAN SERIAL NO. AND UP

† ALL ROTO-PRIME® IMPELLERS ARE TRIMMED AND INCLUDE WEAR RINGS AND GROOVE PINS. WEAR RINGS ARE NOT SOLD SEPARATELY.



THE GORMAN-RUPP COMPANY • MANSFIELD, OHIO

GORMAN-RUPP OF CANADA LIMITED • ST. THOMAS, ONTARIO, CANADA

Printed in U.S.A.

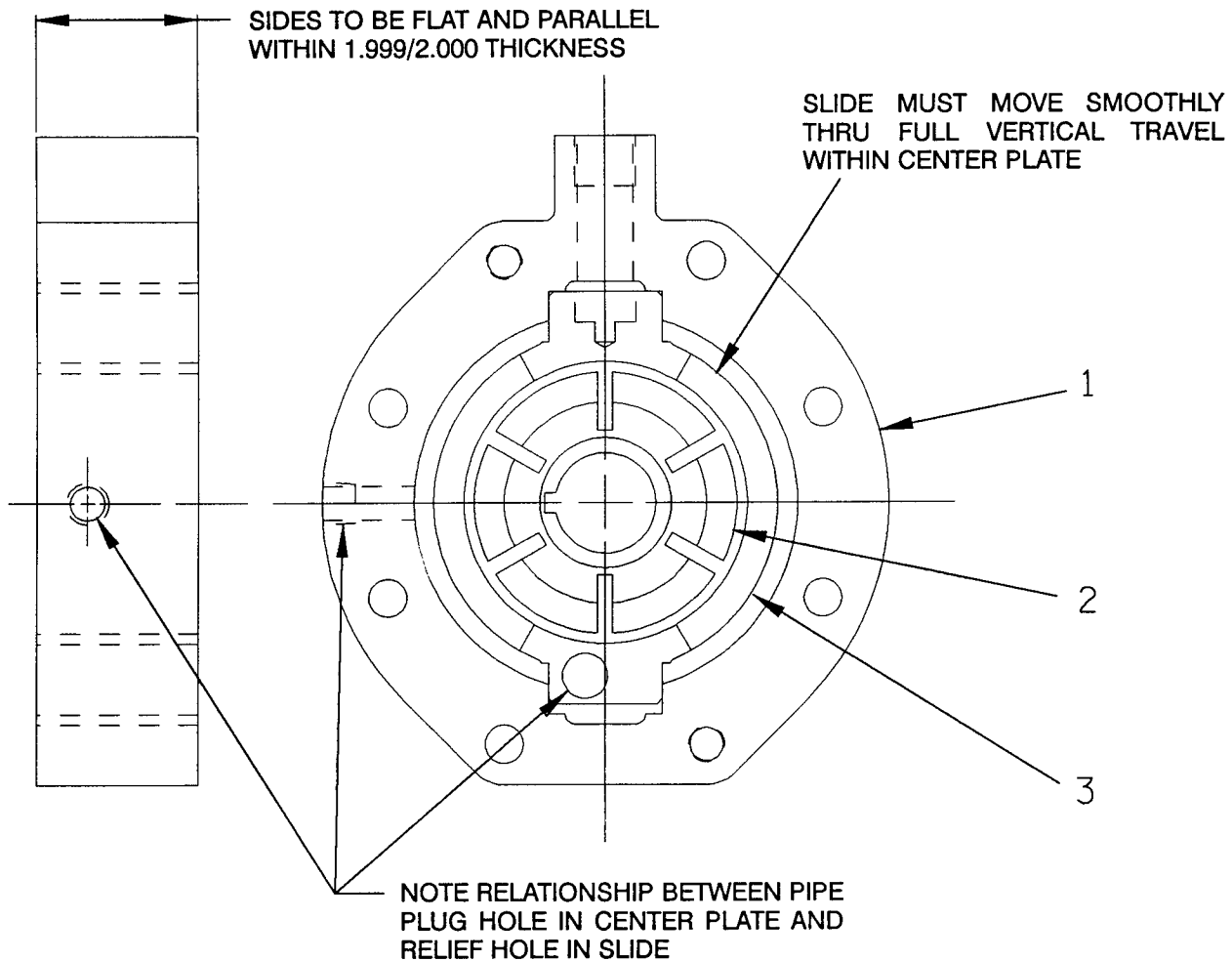
S/N 1074459 Up
PUMP ISSUE 1

PARTS LIST
44143-091 Bearing Housing Assembly

ITEM NO.	PART NAME	PART NUMBER	MAT'L CODE	QTY	ITEM NO.	PART NAME	PART NUMBER	MAT'L CODE	QTY
1 *	SEAL ASSEMBLY	25271-921	-----	1	26	ROTOR BLADE SPACER	K76623	15030	1
2	RETAINING RING	24124-243	-----	1	27 †	CENTER PLATE GASKET	R10150	18010	2
3	BEARING CAP	R12770-02	10010	1	28	PIPE PLUG	P06	15079	1
4	BEARING LOCK NUT	23962-011	-----	1	29 *	CENTER PLATE GASKET	R10150	18010	1
5 *	BEARING CAP GASKET	N18938-01	18000	1	30	HEX HD CAPSCREW	21632-614	-----	8
6	BRG LOCKWASHER	23962-511	-----	1	31	LOCKWASHER	J06	15991	8
7 *	OUTBOARD BEARING	23275-211	-----	1	32	DOWEL PIN	21133-116	-----	2
8	AIR VENT	S1703	-----	1	33 *	OIL SEAL	25227-240	-----	1
9	BEARING HOUSING	W01172-04	11010	1	34	OIL RING	K86483	15030	1
10 *	IMPELLER SHAFT	T08620-02	15010	1	35	OIL RING STOP	K76632-01	-----	1
11 *	INBOARD BEARING	23421-410	-----	1	36	OILER	26713-054	-----	1
12	BEARING RET RING	24124-245	-----	1	37	OIL RING STOP	K76632-01	-----	1
13	PIPE PLUG	P02	15079	1	38	OIL RING	K86483	15030	1
14	AIR VENT FITTING	S2162	-----	1	39 *	OIL SEAL	25227-240	-----	1
15 *	SPACER PLATE GASKET	R12923	18000	1	40	PIPE PLUG	P06	15079	1
16	SPACER PLATE	R12771-02	11010	1	41	HEX HD CAPSCREW	21632-597	-----	4
17	PRESS REG SPRING CAP	K68064	15991	1	42	LOCKWASHER	J06	15991	4
18 *	SPRING CAP GASKET	K86067	-----	1	43	MALE CONNECTOR	26351-052	-----	1
19 *	PRESS REG SPRING	K76626	-----	1	44	HVY PIPE NIPPLE	THA0606	15079	1
20	BODY COVER	T03712	11010	1	45	CHECK VALVE	26641-082	-----	1
21 *	ROTOR WOODRUFF KEY	K74041	15990	1	46	MALE ELBOW	26351-133	-----	1
22 *	ROTOR BLADE	K79300-21	-----	6	OPTIONAL:				
23	ROTOR BLADE SPACER	K76623	15030	1		SST IMPELLER SHAFT	T08620-02	17080	1
24	GROUP GRIND	42212-016	-----	1		GROUP GRIND WITH	LK05269	-----	1
25 *	LOCATING PIN	21154-666	-----	1		C.I. ROTOR			

* INDICATES PARTS RECOMMENDED FOR STOCK

† 2 GASKETS REQUIRED WHEN ROTOR OR SLIDE IS THICKER THAN CENTER PLATE.



PARTS LIST
42212-016 Group Grind

ITEM NO.	PART NAME	PART NUMBER	MAT'L CODE	QTY
1	CENTER PLATE	NOT AVAILABLE	-----	1
2	ROTOR	NOT AVAILABLE	-----	1
3	SLIDE	NOT AVAILABLE	-----	1

NOTE: THE GROUP GRIND MUST BE REPLACED AS A COMPLETE UNIT: INDIVIDUAL PIECE PARTS ARE NOT SOLD SEPARATELY.

THE GORMAN-RUPP COMPANY • MANSFIELD, OHIO

GORMAN-RUPP OF CANADA LIMITED • ST. THOMAS, ONTARIO, CANADA

Printed in U.S.A.

**For U.S. and International Warranty Information,
Please Visit www.grpumps.com/warranty
or call:
U.S.: 419-755-1280
International: +1-419-755-1352**

**For Canadian Warranty Information,
Please Visit www.grcanada.com/warranty
or call:
519-631-2870**