



**PUMP MODEL
RS5A31-BAR**

**MANUAL
PART 2 of 3**

**PARTS
LIST**

**WITH
PERFORMANCE CURVE**

GORMAN-RUPP PUMPS

www.grpumps.com

Register your new
Gorman-Rupp pump online at
www.grpumps.com

Valid serial number and e-mail address required.

RECORD YOUR PUMP MODEL AND SERIAL NUMBER

Please record your pump model and serial number in the spaces provided below. Your Gorman-Rupp distributor needs this information when you require parts or service.

Pump Model: _____

Serial Number: _____

PERFORMANCE CURVE – SECTION A

RECORDING MODEL AND SERIAL NUMBERS

Please record the pump model and serial number in the spaces provided below and in the separate Installation/Operation Manual accompanying your pump. Your Gorman-Rupp distributor needs this information when you require parts or service.

Pump Model: _____

Serial Number: _____

WARRANTY INFORMATION

The pump warranty is provided as part of Gorman-Rupp's support program for customers who operate and maintain their equipment as described in this manual and other accompanying literature. Please note that should the equipment be abused or modified to change its performance beyond the original factory specifications, the warranty will become void and any claim will be denied.

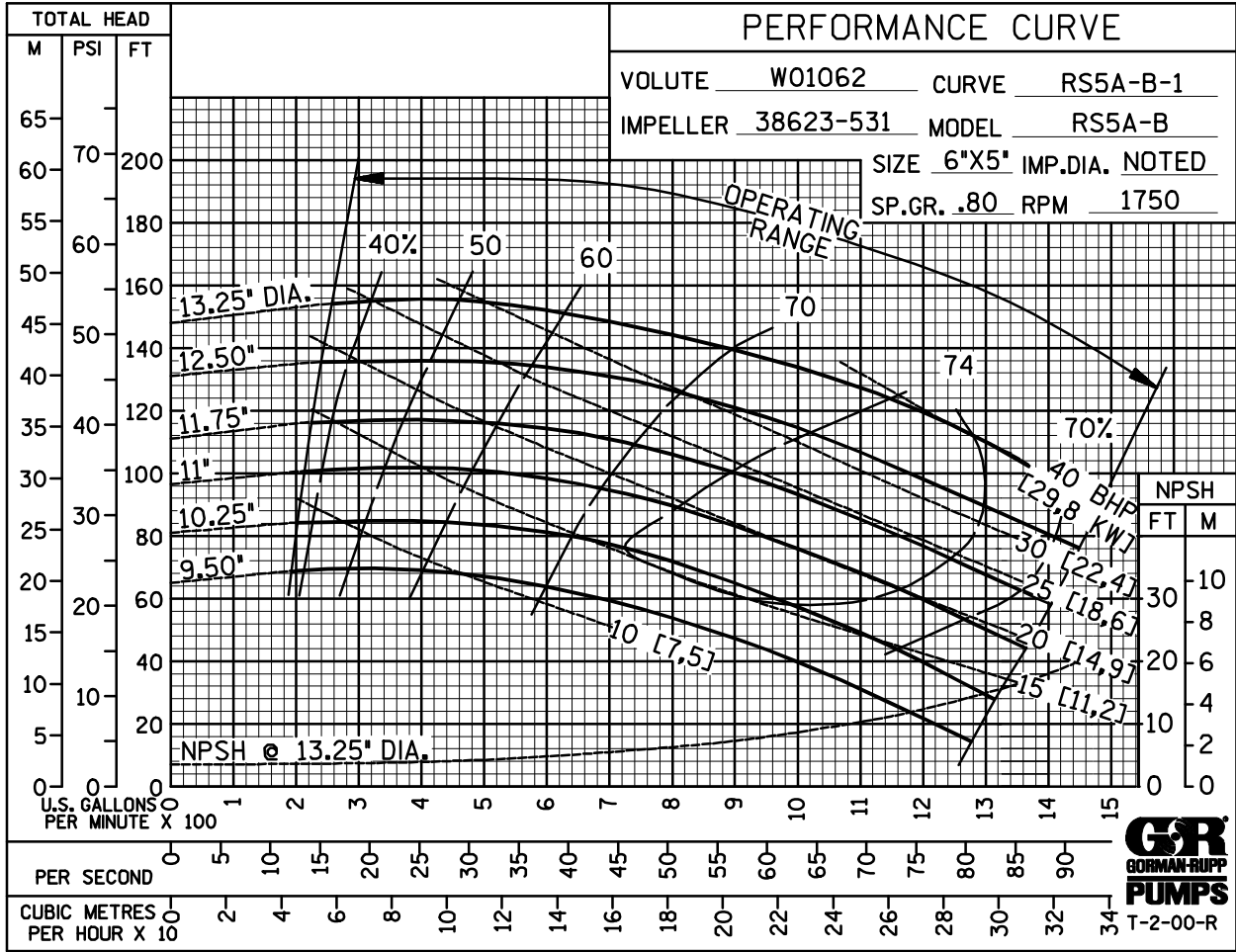
PERFORMANCE CURVE

The performance curve on the following page is based on 70°F (21°C) clear water at sea level, corrected to 0.80 specific gravity, with minimum suction lift. Since pump installations are seldom identical, your performance may be different due to such factors as viscosity, specific gravity, elevation, temperature, and impeller trim.

If your pump serial number is followed by an "N", your pump is **NOT** a standard production model. Contact the Gorman-Rupp Company to verify performance or part numbers.



Pump speed and operating condition points must be within the continuous performance range shown on the curve(s).

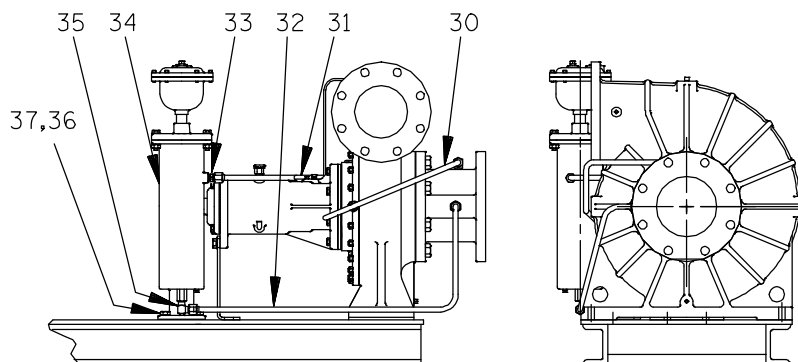
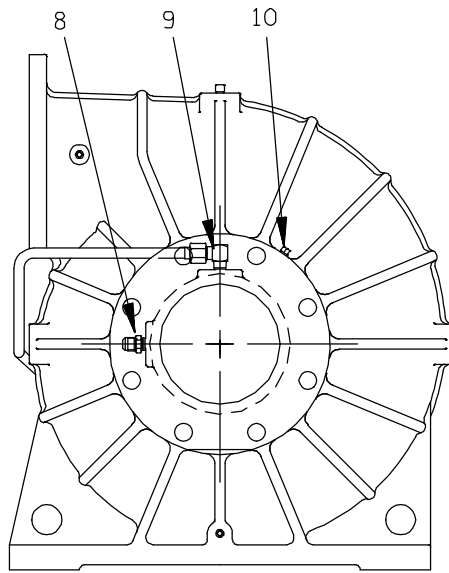
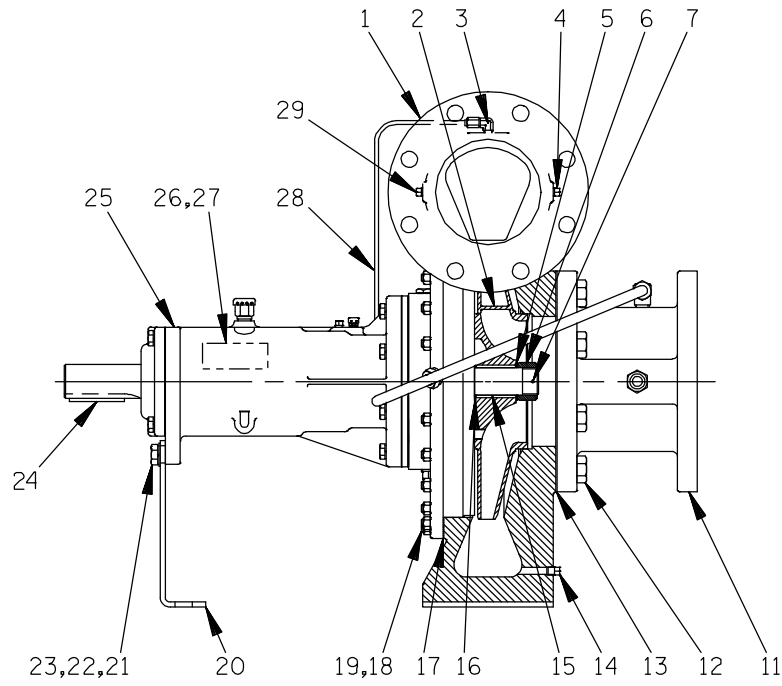


Performance Curve – Model RS5A31 –BAR

This Page Intentionally Blank

RS5A31-BAR

S/N 1217390 Up
PUMP ISSUE 2



GORMAN-RUPP PUMPS

www.grpumps.com

RS5A31—BAR

S/N 1217390 Up
PUMP ISSUE 2

PARTS LIST Pump Model RS5A31—BAR

If your pump serial number is followed by an "N", your pump is **NOT** a standard production model. Contact the Gorman-Rupp Company to verify part numbers.

ITEM NO.	PART NAME	PART NUMBER	MAT'L CODE	QTY	ITEM NO.	PART NAME	PART NUMBER	MAT'L CODE	QTY
☞ 1	PUMP CASING	SEE NOTE BELOW		1	28	SEAL TUBE ASSY	46335-059	---	1
2 *	IMPELLER	38623-531	13048	1	☞ 29	PIPE PLUG	P02	15079	1
3	MALE ELBOW	25817-032	---	1	30	SUCTION TUBE ASSY	46335-079	---	1
☞ 4	PIPE PLUG	P02	15079	1	31	DISCHARGE TUBE ASSY	46335-077	---	1
5	IMPELLER WASHER	K76643	15991	1	32	RETURN TUBE ASSY	46335-078	---	1
6	IMPELLER NUT	K88233	15111	1	33	MALE CONNECTOR	25812-214	---	1
7	SPIRAL PIN	21137-079	---	1	34 ●	AIR RELEASE VALVE	GRP33-06A	---	1
8	MALE CONNECTOR	25812-214	---	1	35	MALE ELBOW	25812-011	---	1
9	MALE ELBOW	25812-011	---	1	36	HEX HD CAPSCREW	B0805	15991	2
☞ 10	PIPE PLUG	P02	15079	1	37	LOCKWASHER	J08	15991	2
11	SUCTION FLANGE	11402F	10140	1	NOT SHOWN:				
12	HEX HD CAPSCREW	B1208	15991	8	* SUCT FLANGE GASKET	1679G	18000	1	
13 *	SUCT FLANGE GASKET	38682-208	19370	1	* DISCH FLANGE GASKET	1678G	18000	1	
☞ 14	PIPE PLUG	P02	15079	1	G-R DECAL	GR-03	---	1	
15 *	IMPELLER KEY	K79330	16120	2	ROTATION DECAL	2613M	---	1	
16	IMPELLER WASHER	K76643	15991	1	SUCTION STICKER	6588AG	---	1	
17 *	PUMP CASING GASKET	N15237-21	20000	1	DISCHARGE STICKER	6588BJ	---	1	
☞ 18	STUD	C0606 1/2	15991	24	BRG LUBE DECAL	38816-074	---	1	
19	HEX NUT	D06	15991	24	INSTRUCTION TAG	38817-011	---	1	
20	BRG SUPPORT	R12852-02	15990	1	OPTIONAL:				
21	HEX HD CAPSCREW	B0805	15991	2	DISCHARGE CHECK VALVE				
22	LOCKWASHER	J08	15991	2	-CHECK VALVE	26642-106	---	1	
23	FLAT WASHER	K08	15991	2	-HEX HD CAPSCREW	B1212	15991	8	
24 *	SHAFT KEY	N0611	15990	1	-GASKET	38682-208	19730	1	
25	BRG HOUSING ASSY	44143-092	---	1	-HEX NUT	D12	15991	8	
26	NAME PLATE	2613DZ	13990	1	STEEL TUBING KIT	48263-515	---	1	
27	DRIVE SCREW	BM#04-03	17000	2					

* INDICATES PARTS RECOMMENDED FOR STOCK

† ALL ROTO-PRIME[®] IMPELLERS ARE TRIMMED.

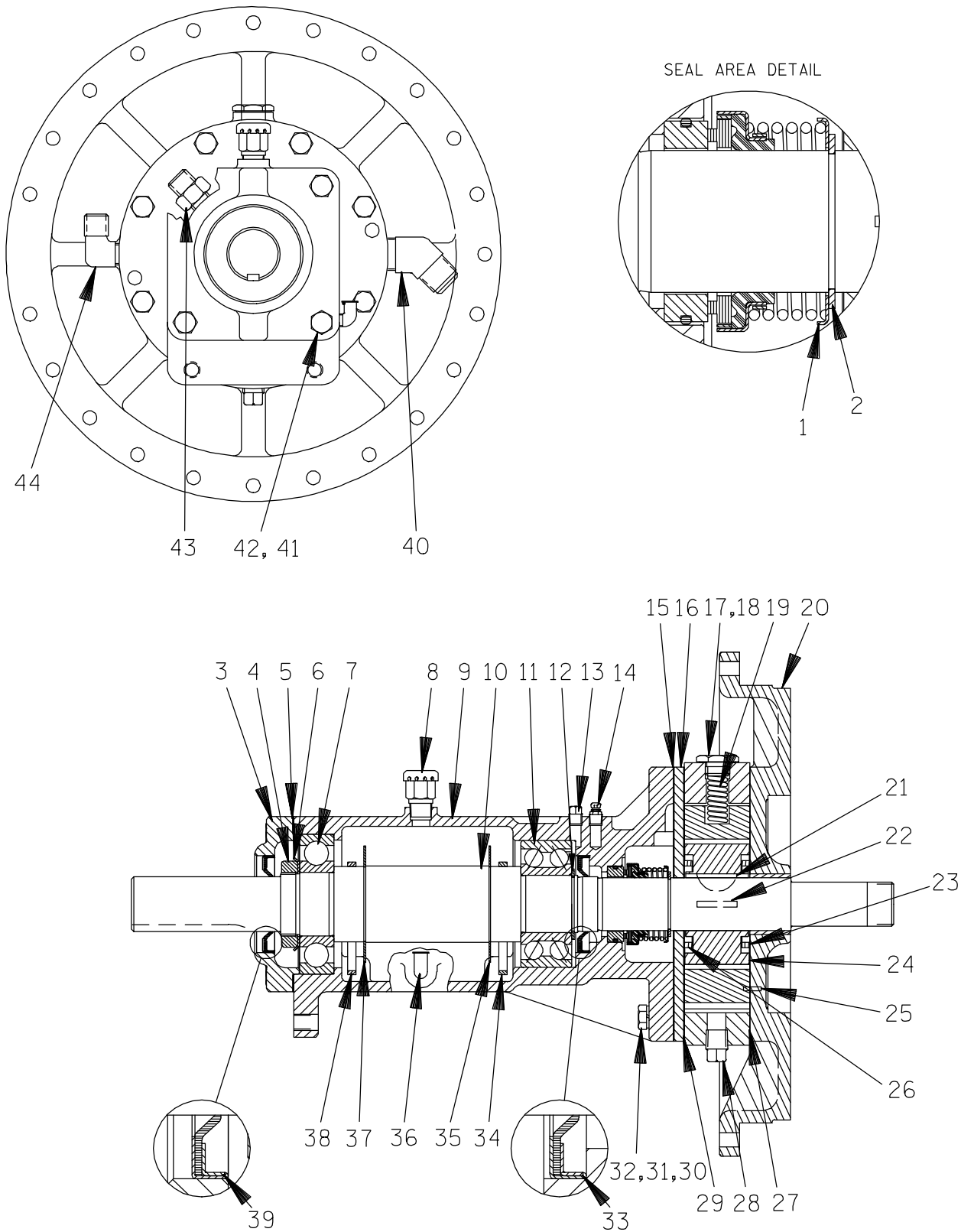
● SEE ACCOMPANYING LITERATURE FOR INDIVIDUAL PARTS, MAINTENANCE AND REPAIR.

☞ INCLUDED WITH REPAIR 46474-335 --- 1
PUMP CASING ASSY

GORMAN-RUPP PUMPS

RS5A31-BAR

S/N 1217390 Up
PUMP ISSUE 2



GORMAN-RUPP PUMPS

www.grpumps.com

3 of 5

©1999 Gorman-Rupp Pumps

Printed in U.S.A.

RS5A31—BAR

S/N 1217390 Up
PUMP ISSUE 2

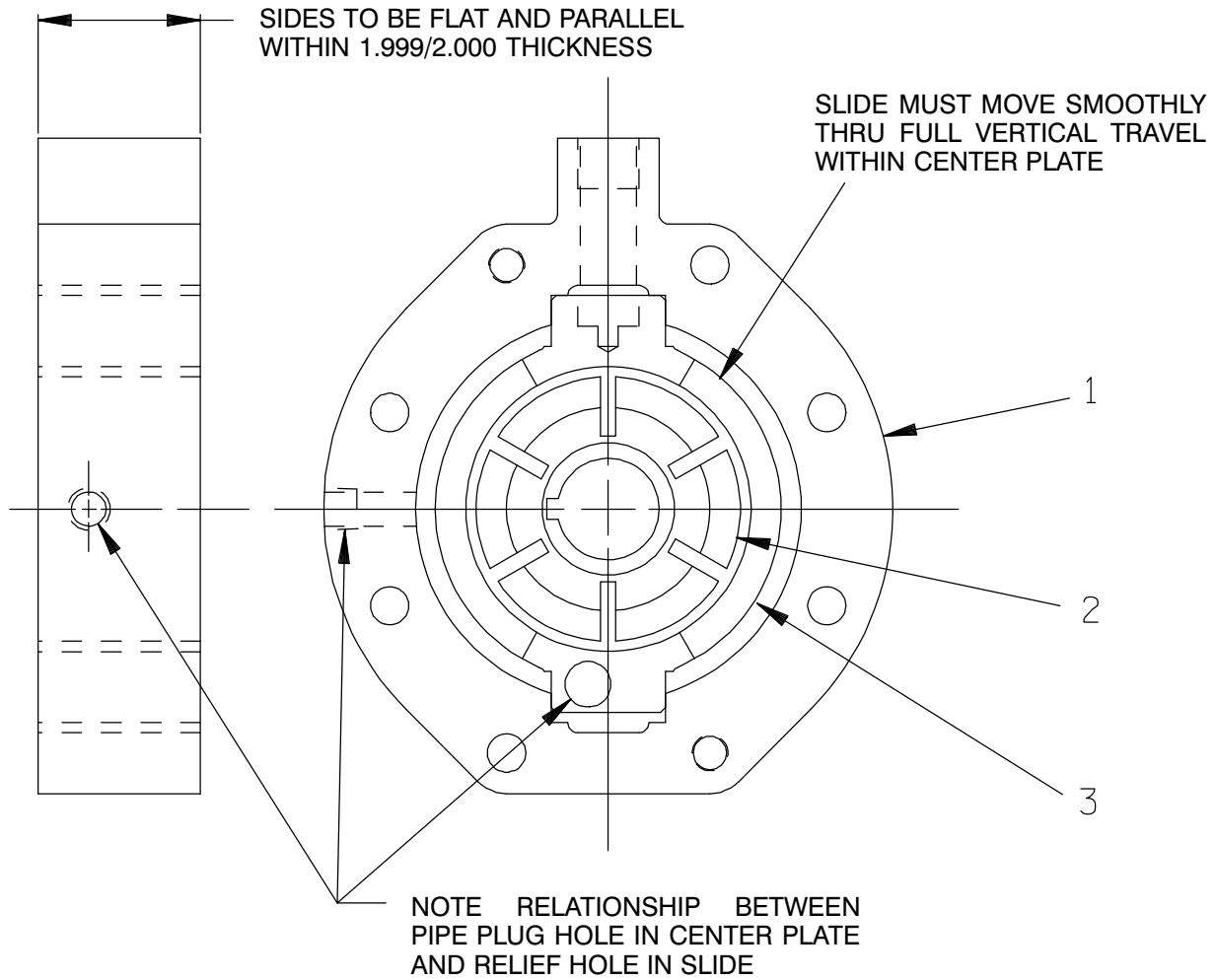
PARTS LIST 44143—092 Bearing Housing Assembly

ITEM NO.	PART NAME	PART NUMBER	MAT'L CODE	QTY	ITEM NO.	PART NAME	PART NUMBER	MAT'L CODE	QTY
1 *	SEAL ASSEMBLY	25271—921	-----	1	26	ROTOR BLADE SPACER	K76623	15030	1
2	RETAINING RING	24124—243	-----	1	27 †	CENTER PLATE GASKET	R10150	19210	2
3	BEARING CAP	R12770—02	10010	1	28	PIPE PLUG	P06	15079	1
4	BEARING LOCK NUT	23962—011	-----	1	29 *	CENTER PLATE GASKET	R10150	18010	1
5 *	BEARING CAP GASKET	N18938—01	18000	1	30	HEX HD CAPSCREW	B0615	15991	8
6	BRG LOCKWASHER	23962—511	-----	1	31	LOCKWASHER	J06	15991	8
7 *	OUTBOARD BEARING	S1077	-----	1	32	DOWEL PIN	21133—116	-----	2
8	AIR VENT	S1703	-----	1	33 *	OIL SEAL	25227—240	-----	1
9	BEARING HOUSING	W01172—04	11010	1	34	OIL RING	K86483	15030	1
10 *	IMPELLER SHAFT	T08620—02	15010	1	35	OIL RING STOP	K76632—01	-----	1
11 *	INBOARD BEARING	23421—410	-----	1	36	OILER	26713—054	-----	1
12	BEARING RET RING	24124—245	-----	1	37	OIL RING STOP	K76632—01	-----	1
13	PIPE PLUG	P02	15079	1	38	OIL RING	K86483	15030	1
14	AIR VENT FITTING	S2162	-----	1	39 *	OIL SEAL	25227—240	-----	1
15 *	SPACER PLATE GASKET	R12923	18000	1	40	MALE ELBOW	25812—161	-----	1
16	SPACER PLATE	R12771—02	11010	1	41	HEX HD CAPSCREW	B0605	15991	4
17	PRESS REG SPRING CAP	K68064	15991	1	42	LOCKWASHER	J06	15991	4
18 *	SPRING CAP GASKET	K86067	-----	1	43	MALE CONNECTOR	25817—202	-----	1
19 *	PRESS REG SPRING	K76626	-----	1	44	MALE ELBOW	25812—011	15079	1
20	BODY COVER	T03712—20	11010	1		OPTIONAL:			
21 *	ROTOR WOODRUFF KEY	K74041	15990	1		SST IMPELLER SHAFT	T08620—02	17080	1
22 *	ROTOR BLADE	K79300—21	-----	6		GROUP GRIND WITH	LK05269	-----	1
23	ROTOR BLADE SPACER	K76623	15030	1		C.I. ROTOR			
24	GROUP GRIND	42212—016	-----	1		TEFLON SEAL	25271—761	---	1
25 *	LOCATING PIN	21154—666	-----	1					

* INDICATES PARTS RECOMMENDED FOR STOCK

† 2 GASKETS REQUIRED WHEN ROTOR OR SLIDE IS THICKER THAN CENTER PLATE.

GORMAN-RUPP PUMPS



PARTS LIST
42212-016 Group Grind

ITEM NO.	PART NAME	PART NUMBER	MAT'L CODE	QTY
1	CENTER PLATE	NOT AVAILABLE	-----	1
2	ROTOR	NOT AVAILABLE	-----	1
3	SLIDE	NOT AVAILABLE	-----	1

NOTE: THE GROUP GRIND MUST BE REPLACED AS A COMPLETE UNIT: INDIVIDUAL PIECE PARTS ARE NOT SOLD SEPARATELY.

GORMAN-RUPP PUMPS

**For Warranty Information, Please Visit
www.grpumps.com/warranty
or call:
U.S.: 419-755-1280
Canada: 519-631-2870
International: +1-419-755-1352**

GORMAN-RUPP PUMPS