

C

Use With: OM-04417  
MR-04427

PUBLICATION NUMBER PL-04429-01  
March 8, 1996; Rev. A 03/09/98  
Supersedes: OM-03780-01



**PUMP MODEL**  
**SM2F1 - X1 460/575/3**

**MANUAL**  
**PART 2 of 3**

**PARTS**  
**LIST**  
**WITH**  
**PERFORMANCE CURVE**

**THE GORMAN-RUPP COMPANY • MANSFIELD, OHIO**

GORMAN-RUPP OF CANADA LIMITED • ST. THOMAS, ONTARIO, CANADA Printed in U.S.A.

©Copyright by the Gorman-Rupp Company

## PERFORMANCE CURVE – SECTION A

### RECORDING MODEL AND SERIAL NUMBERS

Please record the pump model and serial number in the spaces provided below and in the separate Installation/Operation Manual accompanying your pump. Your Gorman-Rupp distributor needs this information when you require parts or service.

Pump Model: \_\_\_\_\_

Serial Number: \_\_\_\_\_

### WARRANTY INFORMATION

The pump warranty is provided as part of Gorman-Rupp's support program for customers who operate and maintain their equipment as described in this manual and other accompanying literature. Please note that should the equipment be abused or modified to change its performance beyond the original factory specifications, the warranty will become void and any claim will be denied.

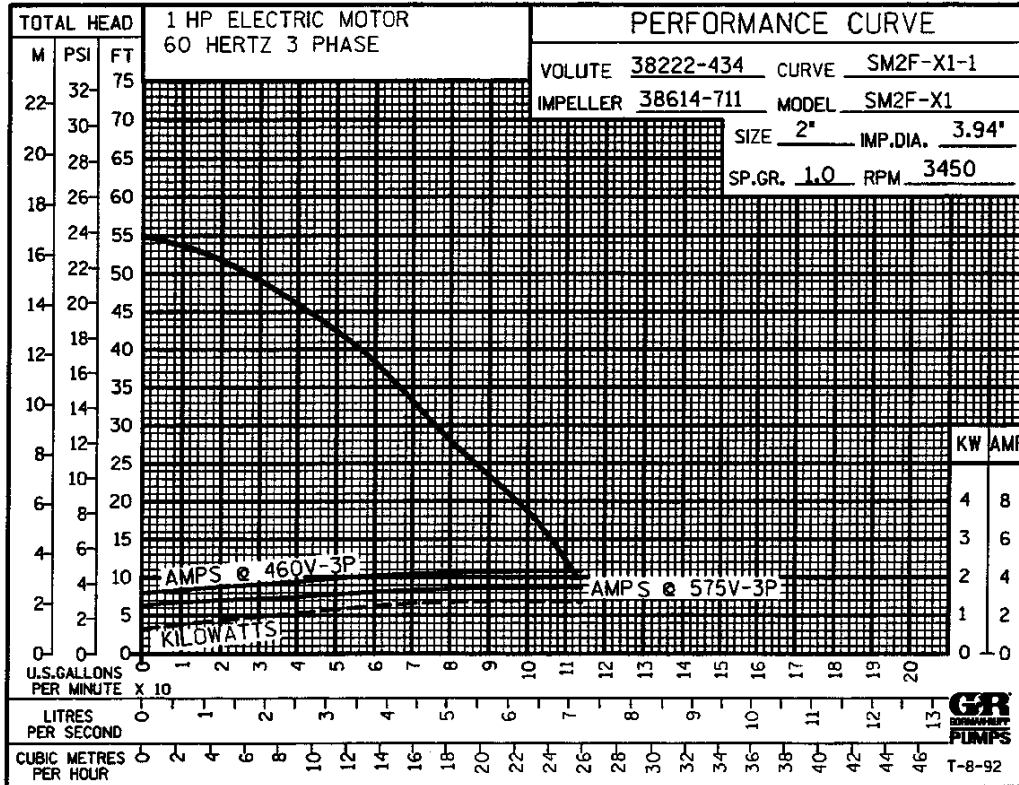
### PERFORMANCE CURVES

The performance curve on this page is based on 70° F (21° C) clear water at sea level. Since pump installations are seldom identical, your performance may be different due to such factors as viscosity, specific gravity, elevation, temperature, and impeller trim.

If your pump serial number is followed by an "N", your pump is **NOT** a standard production model. Contact the Gorman-Rupp Company to verify performance or part numbers.



Pump speed and operating condition points must be within the continuous performance range shown on the curve(s).

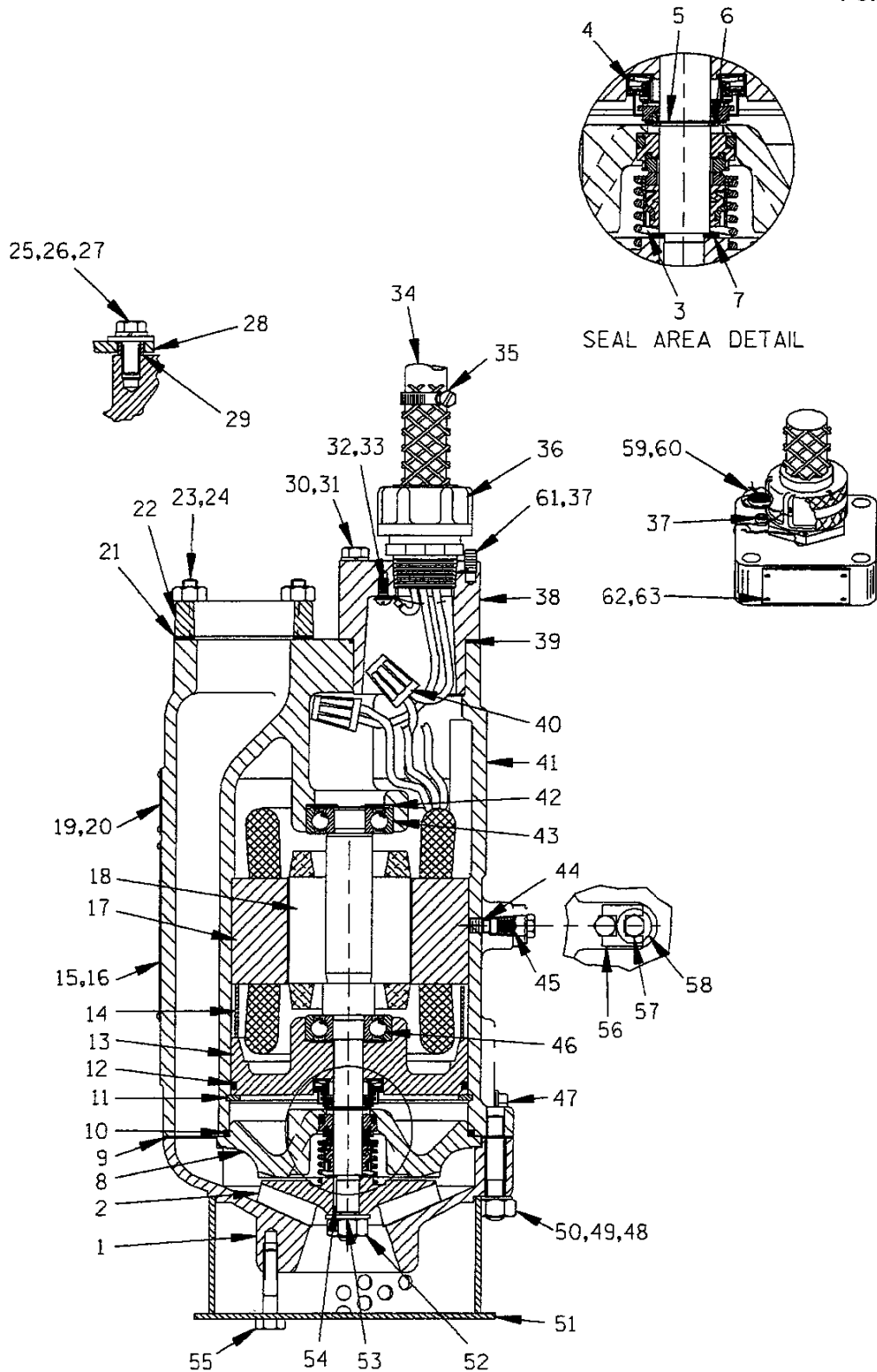


**Performance Curve – Model SM2F1-X1 460/575/3**

C

SM2F1-X1 460/575/3

S/N 1009803 Up  
PUMP ISSUE 1



**THE GORMAN-RUPP COMPANY • MANSFIELD, OHIO**

GORMAN-RUPP OF CANADA LIMITED • ST. THOMAS, ONTARIO, CANADA Printed in U.S.A.

JUNE 15, 1993  
Rev. A 03/09/98

©Copyright by the Gorman-Rupp Company

1 of 2  
Page 154.2 F1

S/N 1009803 Up  
PUMP ISSUE 1

If your pump serial number is followed by an "N", your pump is NOT a standard production model. Contact the Gorman-Rupp Company to verify part numbers.

ITEM NO.	PART NAME	PART NUMBER	MAT'L CODE	QTY	ITEM NO.	PART NAME	PART NUMBER	MAT'L CODE	QTY
1	SUCTION CASING	38222-434	1101H	1	36	CABLE GRIP ASSY	27111-016	----	1
2 *	IMPELLER	38614-711	1101H	1	37	ALLEN HD SETSCREW	GA0402	17000	1
3 *	SEAL ASSEMBLY	46512-036	----	1	38	TERMINAL HOUSING	38381-205	13040	1
4 *	MECH SEAL ASSY	25276-011	----	1	39 *	MOTOR HSG O-RING	25154-141	----	1
5 *	UPPER SEAL SHIM SET	513A	17090	1	40	CONNECTOR	S1718	----	5
6	SNAP RING	S668	----	1	41	MOTOR HOUSING	38311-051	13000	1
7 *	IMP ADJ SHIM SET	669	14990	1	42	SPRING WASHER	S1554	----	1
8	SEAL PLATE	38272-830	10010	1	43 *	UPPER BALL BEARING	23282-004	----	1
9 *	CASING GASKET	38674-807	20000	1	44	ALLEN HD SETSCREW	GA0501 1/4	15990	1
10 *	SEAL PLATE O-RING	25152-250	----	1	45	PIPE PLUG	38649-022	17030	1
11	RETAINING RING	24121-077	----	1	46 *	LOWER BALL BEARING	23282-004	----	1
12 *	INTERMEDIATE O-RING	25152-248	----	1	47	PIPE PLUG	P04	17000	1
13	INTERMEDIATE	38261-016	13040	1	48	STUD	C0609	17000	4
14	MOTOR BUSHING	31134-060	23010	1	49	LOCKWASHER	J06	17000	4
15	MSHA PLATE	2613ES	17020	1	50	HEX NUT	D06	17000	4
16	DRIVE SCREW	BM#04-03	17000	4	51	STRAINER ASSY	46611-013	2415V	1
17	STATOR				52	HEX NUT	D06	17000	1
	-(460V)	47113-821	----	1	53	FLAT WASHER	21161-808	----	1
	-(575V)	47113-827	----	1	54	IMPELLER KEY	N0202 1/2	17000	1
18	ROTOR/SHAFT ASSY	47112-814	----	1	55	NYLOCK CAPSCREW	BT0506	15991	4
19	NAME PLATE	2613DD	17020	1	56	LOCK CLIP	33645-008	17040	1
20	DRIVE SCREW	BM#04-03	17000	4	57	NYLOCK CAPSCREW	BT0403	17000	1
21 *	DISCH FLANGE GSKT	10195G	20000	1	58	FLAT WASHER	KB04	17000	1
22	DISCHARGE FLANGE	10195	13040	1	59	14 IN. WIRE	31311-004	17990	1
23	STUD	C0506	15991	4	60	LEAD SEAL	21188-002	----	1
24	HEX NUT	D05	15991	4	61	ALLEN HD SETSCREW	GA0401	17000	1
25	HEX HD CAPSCREW	B0604	15991	2	62	CERTIFICATION PLATE	2613GX	17020	1
26	LOCKWASHER	J06	15991	2	63	DRIVE SCREW	BM#04-03	17000	4
27	FLAT WASHER	K06	15991	2					
28	HANDLE	10185A	1502V	1		NOT SHOWN:			
29	BUSHING	10194	15071	2		CONTROL BOX ASSY:			
30	HEX HD CAPSCREW	B0509	17000	4		-460V	47631-064	----	1
31	LOCKWASHER	J05	17000	4		-575V	47631-065	----	1
32	T-TYPE LOCKWASHER	AK#10	15991	2		RTV SEALANT	18771-106	----	1
33	RD HD MACH SCREW	X#10-01 1/2	14990	2					
34	50 FT. CABLE ASSY	47351-011	----	1		OPTIONAL:			
35	HOSE CLAMP	26518-666	----	1		GASKET SET	11000T	----	1
						STAGING ADAPTOR KIT	48272-002	----	1

\* INDICATES PARTS RECOMMENDED FOR STOCK

**THE GORMAN-RUPP COMPANY • MANSFIELD, OHIO**

GORMAN-RUPP OF CANADA LIMITED • ST. THOMAS, ONTARIO, CANADA Printed in U.S.A.



**For U.S. and International Warranty Information,  
Please Visit [www.grpumps.com/warranty](http://www.grpumps.com/warranty)**

**or call:**

**U.S.: 419-755-1280**

**International: +1-419-755-1352**

**For Canadian Warranty Information,  
Please Visit [www.grcanada.com/warranty](http://www.grcanada.com/warranty)**

**or call:**

**519-631-2870**

**THE GORMAN-RUPP COMPANY • MANSFIELD, OHIO**

**GORMAN-RUPP OF CANADA LIMITED • ST. THOMAS, ONTARIO, CANADA**