

C

Use With: OM-04417  
MR-04441

PUBLICATION NUMBER PL-04447-01  
Pump Issue 1  
April 1, 1996  
Supersedes: OM-03270-01



**PUMP MODEL**  
**SM4D65-X10 460/575/3**

**MANUAL**  
**PART 2 of 3**

**PARTS**  
**LIST**  
**WITH**  
**PERFORMANCE CURVE**

**THE GORMAN-RUPP COMPANY • MANSFIELD, OHIO**

**GORMAN-RUPP OF CANADA LIMITED • ST. THOMAS, ONTARIO, CANADA** Printed in U.S.A.

©Copyright by the Gorman-Rupp Company



### PERFORMANCE CURVE – SECTION A

#### RECORDING MODEL AND SERIAL NUMBERS

Please record the pump model and serial number in the spaces provided below and in the separate Installation/Operation Manual accompanying your pump. Your Gorman-Rupp distributor needs this information when you require parts or service.

Pump Model: \_\_\_\_\_

Serial Number: \_\_\_\_\_

#### WARRANTY INFORMATION

The pump warranty is provided as part of Gorman-Rupp's support program for customers who operate and maintain their equipment as described in this manual and other accompanying literature. Please note that should the equipment be abused or modified to change its performance beyond the original factory specifications, the warranty will become void and any claim will be denied.

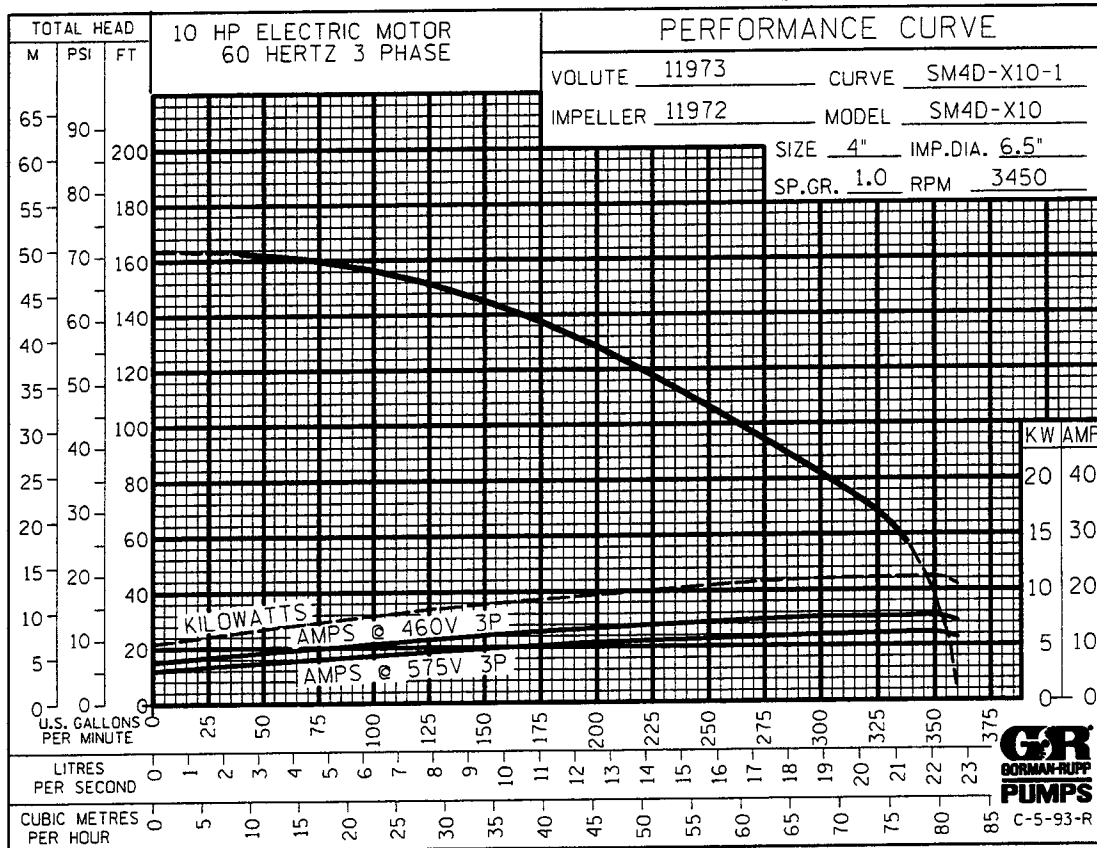
#### PERFORMANCE CURVES

The performance curve on this page is based on 70° F (21° C) clear water at sea level. Since pump installations are seldom identical, your performance may be different due to such factors as viscosity, specific gravity, elevation, temperature, and impeller trim.

If your pump serial number is followed by an "N", your pump is **NOT** a standard production model. Contact the Gorman-Rupp Company to verify performance or part numbers.



Pump speed and operating condition points must be within the continuous performance range shown on the curve(s).

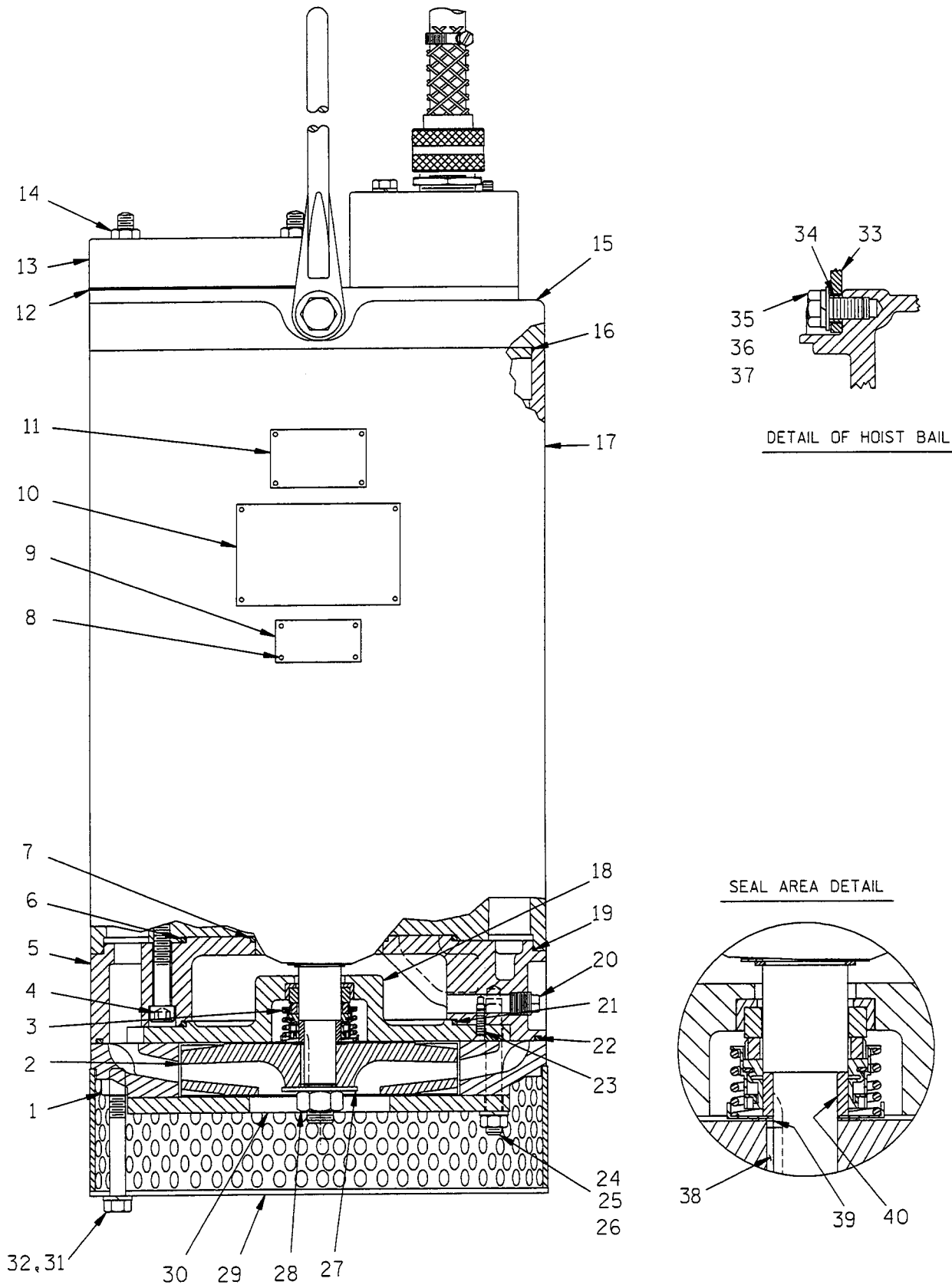


Performance Curve – Model SM4D65-X10 460/575/3

C

# SM4D65-X10 460/575/3

S/N 915775 Up  
PUMP ISSUE 1



**THE GORMAN-RUPP COMPANY • MANSFIELD, OHIO**

GORMAN-RUPP OF CANADA LIMITED • ST. THOMAS, ONTARIO, CANADA

Printed in U.S.A.

1 of 4

APRIL 1, 1989 Rev. B 04/01/96

©Copyright by the Gorman-Rupp Company

Page 154.4 D3

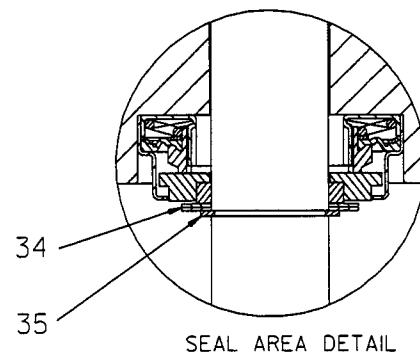
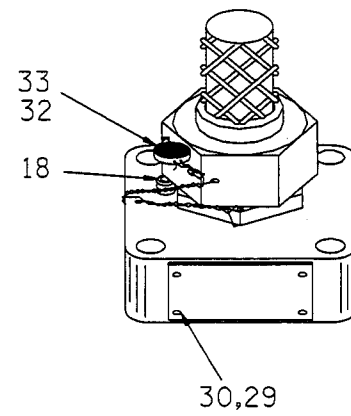
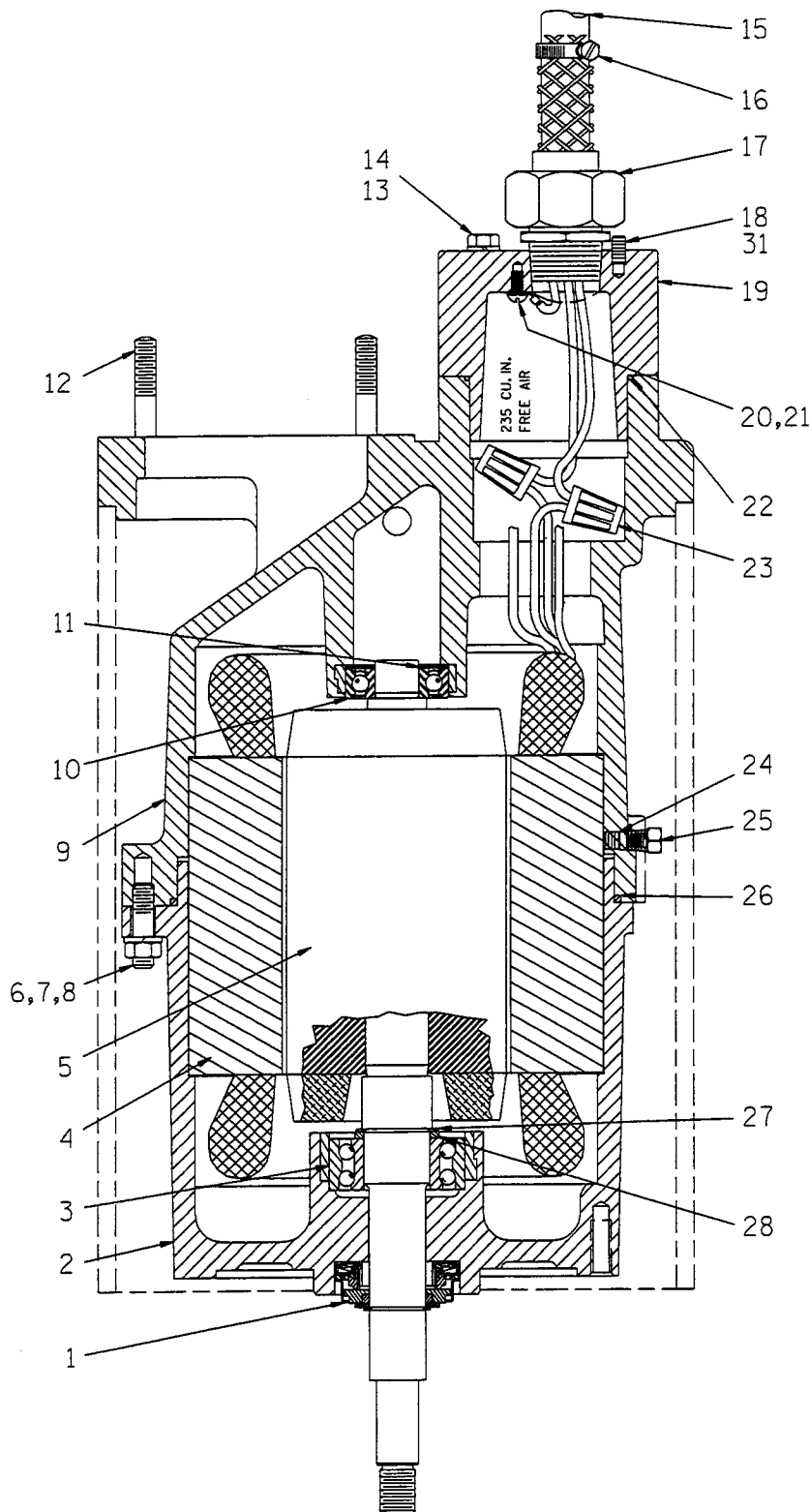
S/N 915775 Up  
PUMP ISSUE 1

If your pump serial number is followed by an "N", your pump is **NOT** a standard production model. Contact the Gorman-Rupp Company to verify part numbers.

| ITEM NO. | PART NAME             | PART NUMBER | MAT'L CODE | QTY | ITEM NO.   | PART NAME             | PART NUMBER | MAT'L CODE | QTY |
|----------|-----------------------|-------------|------------|-----|------------|-----------------------|-------------|------------|-----|
| 1        | DIFFUSER              | 11973       | 1718H      | 1   | 27         | FLAT WASHER           | KB10        | 17090      | 1   |
| 2 *      | IMPELLER              | 11972       | 1718H      | 1   | 28 *       | IMPELLER NUT          | D10S        | 17090      | 1   |
| 3 *      | SEAL ASSEMBLY         | 46512-070   | ---        | 1   | 29         | STRAINER ASSY         | 11969       | 17050      | 1   |
| 4        | SCKT HD CAPSCREW      | DM0609      | 17090      | 3   | 30 *       | WEAR PLATE            | 11948A      | 1718H      | 1   |
| 5        | INTERMEDIATE          | 38261-027   | 17040      | 1   | 31         | HEX HD CAPSCREW       | B0612       | 17090      | 3   |
| 6 *      | INTERMEDIATE O-RING   | 25154-259   | ---        | 1   | 32         | LOCKWASHER            | J06         | 17090      | 3   |
| 7 *      | INTERMEDIATE O-RING   | 25154-234   | ---        | 1   | 33         | HOIST BAIL            | 11959       | 24170      | 1   |
| 8        | DRIVE SCREW           | BM#04-03    | 17090      | 12  | 34         | BAIL BUSHING          | 9562        | 17120      | 2   |
| 9        | PENN DOER APPL PLATE  | 2613FL      | 17040      | 1   | 35         | FLAT WASHER           | KE08        | 17090      | 2   |
| 10 *     | MSHA PLATE            | 2613ES      | 17040      | 1   | 36         | LOCKWASHER            | J08         | 17090      | 2   |
| 11       | NAME PLATE            | 2613DD      | 17040      | 1   | 37         | HEX HD CAPSCREW       | B0804       | 17090      | 2   |
| 12 *     | DISCH FLANGE GASKET   | 11957G      | 19370      | 1   | 38 *       | IMPELLER KEY          | N0303 1/2   | 17090      | 1   |
| 13       | DISCHARGE FLANGE      | 11957       | 17070      | 1   | 39 *       | IMPELLER ADJ SHIM SET | 2Y          | 17090      | 1   |
| 14       | HEX NUT               | D06         | 17090      | 4   | 40 *       | SHAFT SLEEVE          | 13878       | 17090      | 1   |
| 15       | MOTOR ASSEMBLY        |             |            |     | NOT SHOWN: |                       |             |            |     |
|          | -460V                 | 47111-072   | ---        | 1   |            | QT SUB PUMP OIL       | 9568        | ---        | 1   |
|          | -575V                 | 47111-073   | ---        | 1   |            | VOLTAGE TAG           |             |            |     |
| 16 *     | PUMP CASING O-RING    | 25154-274   | ---        | 1   |            | -460V                 | 6588BL      | ---        | 1   |
| 17       | PUMP CASING           | 38311-806   | 17040      | 1   |            | -575V                 | 6588BM      | ---        | 1   |
| 18       | SEAL PLATE            | 13882       | 1718H      | 1   |            | CONTROL BOX           |             |            |     |
| 19 *     | INTERMEDIATE O-RING   | 25154-274   | ---        | 1   |            | -460V                 | 47631-150   | ---        | 1   |
| 20       | SEAL CAVITY FILL PLUG | P04         | 17090      | 1   |            | -575V                 | 47631-151   | ---        | 1   |
| 21 *     | SEAL PLATE O-RING     | 25154-259   | ---        | 1   | OPTIONAL:  |                       |             |            |     |
| 22 *     | DIFFUSER O-RING       | 25154-274   | ---        | 1   |            | STAGING ADAPTOR KIT   | 48272-012   | ---        | 1   |
| 23       | FLT HD MACH SCREW     | Y#10-03     | 17090      | 3   |            | ADI IMPELLER          | 11972       | 1102H      | 1   |
| 24       | STUD                  | C0612       | 17090      | 3   |            | ADI DIFFUSER          | 11973       | 1102H      | 1   |
| 25       | LOCKWASHER            | J06         | 17090      | 3   |            | ADI SEAL PLATE        | 13882       | 1102H      | 1   |
| 26       | HEX NUT               | D06         | 17090      | 3   |            |                       |             |            |     |

\* INDICATES PARTS RECOMMENDED FOR STOCK

**THE GORMAN-RUPP COMPANY • MANSFIELD, OHIO**



S/N 915775 Up  
PUMP ISSUE 1

| ITEM NO. |   | PART NAME               | PART NUMBER | MAT'L CODE | QTY |
|----------|---|-------------------------|-------------|------------|-----|
| 1        | * | MECH SEAL ASSY          | 25276-031   | ----       | 1   |
| 2        |   | LOWER MOTOR HOUSING     | 38311-044   | 17040      | 1   |
| 3        | * | BALL BEARING            | 23425-007   | ----       | 1   |
| 4        |   | STATOR (460V)           | 47113-815   | ----       | 1   |
|          |   | STATOR (575V)           | 47113-816   | ----       | 1   |
| 5        |   | ROTOR & SHAFT ASSY      | 47112-813   | ----       | 1   |
| 6        |   | STUD                    | C0606       | 17090      | 8   |
| 7        |   | DEFORM LOCKNUT          | DD06        | 17090      | 8   |
| 8        |   | LOCKWASHER              | J06         | 17090      | 8   |
| 9        |   | UPPER MOTOR HOUSING     | 38311-043   | 17040      | 1   |
| 10       | * | BALL BEARING            | 23257-009   | ----       | 1   |
| 11       |   | SPRING WASHER           | S1554       | ----       | 1   |
| 12       |   | STUD                    | C0609       | 17090      | 4   |
| 13       |   | HEX HD CAPSCREW         | B0511       | 17090      | 4   |
| 14       |   | LOCKWASHER              | J05         | 17090      | 4   |
| 15       | * | CABLE ASSY - 50 FT.     | 47351-011   | ----       | 1   |
| 16       |   | HOSE CLAMP              | 26518-766   | ----       | 1   |
| 17       |   | CABLE GRIP ASSY         | 27111-816   | ----       | 1   |
| 18       |   | ALLEN HEAD SETSCREW     | GA0402      | 17090      | 1   |
| 19       |   | TERMINAL HOUSING        | 38381-225   | 17040      | 1   |
| 20       |   | T-TYPE LOCKWASHER       | AK#10       | 15991      | 2   |
| 21       |   | RD HD MACH SCREW        | X#10-01 1/2 | 14990      | 2   |
| 22       | * | TERMINAL HOUSING O-RING | 25154-149   | ----       | 1   |
| 23       |   | CONNECTOR               | S1718       | ----       | 5   |
| 24       |   | ALLEN HEAD SETSCREW     | GA0501 1/4  | 15990      | 2   |
| 25       |   | PIPE PLUG               | 38649-022   | 17090      | 2   |
| 26       | * | MOTOR HOUSING O-RING    | 25154-265   | ----       | 1   |
| 27       |   | SNAP RING               | S1831       | ----       | 1   |
| 28       |   | BEARING SPACER          | 21161-401   | ----       | 1   |
| 29       |   | CERTIFICATION PLATE     | 2613GX      | 17040      | 1   |
| 30       |   | DRIVE SCREW             | BM#04-03    | 17090      | 4   |
| 31       |   | ALLEN HEAD SETSCREW     | GA0401      | 17090      | 1   |
| 32       |   | LEAD SEAL               | 21188-002   | ----       | 1   |
| 33       |   | WIRE - 14 IN.           | 14964-103   | ----       | 1   |
| 34       | * | ADJUSTING SHIM SET      | 2X          | 17090      | 1   |
| 35       |   | RETAINING RING          | 24124-332   | ----       | 1   |

OPTIONAL:

|                                   |           |      |   |
|-----------------------------------|-----------|------|---|
| REPAIR BEARING KIT                | 48124-902 | ---- | 1 |
| HOT-MELT ADHESIVE (1/2 IN. STICK) | 18661-044 | ---- | 1 |

\* INDICATES PARTS RECOMMENDED FOR STOCK

**THE GORMAN-RUPP COMPANY • MANSFIELD, OHIO**

**For U.S. and International Warranty Information,  
Please Visit [www.grpumps.com/warranty](http://www.grpumps.com/warranty)  
or call:  
U.S.: 419-755-1280  
International: +1-419-755-1352**

**For Canadian Warranty Information,  
Please Visit [www.grcanada.com/warranty](http://www.grcanada.com/warranty)  
or call:  
519-631-2870**