

Self Priming Centrifugal Pump



Model 83A1-L100W FT4-X



Size 3" x 3"

Total Head		Capacity of Pump in U.S. Gallons per Minute (GPM) at Continuous Performance for Petroleum				
P.S.I.	Feet					
47.2	136	45	45	45	45	45
41.6	120	160	175	175	175	175
34.7	100	175	245	287	300	300
22.7	80	177	247	294	334	365
20.8	60	180	250	297	340	382
13.9	40	180	250	300	347	389
Suction Lift		25'	20'	15'	10'	5'



PUMP SPECIFICATIONS

Size: 3" x 3" (76 mm x 76 mm) NPT - Female.

Casing: Aluminum Alloy 356-T6 w/Gray Iron 30 Cutwater Insert. Maximum Operating Pressure 73 psi (503 kPa).*

Semi-Open Type, Four Vane Impeller: Aluminum 356-T6. Handles 3/4" (19,1 mm) Diameter Spherical Solids.

Replaceable Wear Plate: Carbon Steel M1026.

Intermediate Bracket: Gray Iron 30.

Seal: Type 21, Mechanical, Self-Lubricated. Carbon Rotating Face. Ceramic Stationary Face. Fluorocarbon Elastomers (DuPont Viton® or Equivalent). Stainless Steel 18-8 Cage and Spring. Maximum Temperature of Liquid Pumped, 160°F (71°C).*

Shaft Sleeve: Alloy Steel 4130.

Flap Valve: Gray Iron 30 and Steel w/Buna-N Coated Nylon Gasket.

Flange: Gray Iron 30.

Gaskets: Cork.

Hardware: Standard Plated Steel.

Standard Equipment: 90° Discharge Elbow. Rollover Base with Rubber Feet.

Optional Equipment: Wheel Kit w/Semi-Pneumatic Tires.

**Consult Factory for Applications Exceeding Maximum Pressure and/or Temperature Indicated.*

WARNING!

This unit is designed to handle volatile, flammable liquids. To reduce the risk of fire or explosion, do not operate near open flames, sparks, cigarettes or any other ignition source. Do not operate the unit in an explosive atmosphere or unventilated area. Connect the attached ground cable to the nearest grounding point on the tank being filled. Shut off the engine and allow it to completely cool before refueling.

ENGINE SPECIFICATIONS

Model: Yanmar L100W.

EPA Tier: Final Tier 4.

Type: Single Cylinder, Four Cycle, Air Cooled, Diesel Engine.

Displacement: 26.4 Cu. In. (432 cc).

Lubrication: Forced Circulation.

Air Cleaner: Dry Type.

Fuel Tank: 1.44 U.S. Gals. (5,5 liter).

Full Load Operating Time: 2.2 Hrs.

Starter: Rope Rewind.

Standard Features: Muffler Heat Shield and Fuel Splash Guard. 90° Exhaust Deflector. Exhaust Silencer Muffler w/Guard. Grounding Wire.

YANMAR PUBLISHED PERFORMANCE:

Maximum Continuous Net HP
9.6 (7.1 kW) @ 3600 RPM



GORMAN-RUPP PUMPS

www.grpumps.com

Specifications Subject to Change Without Notice

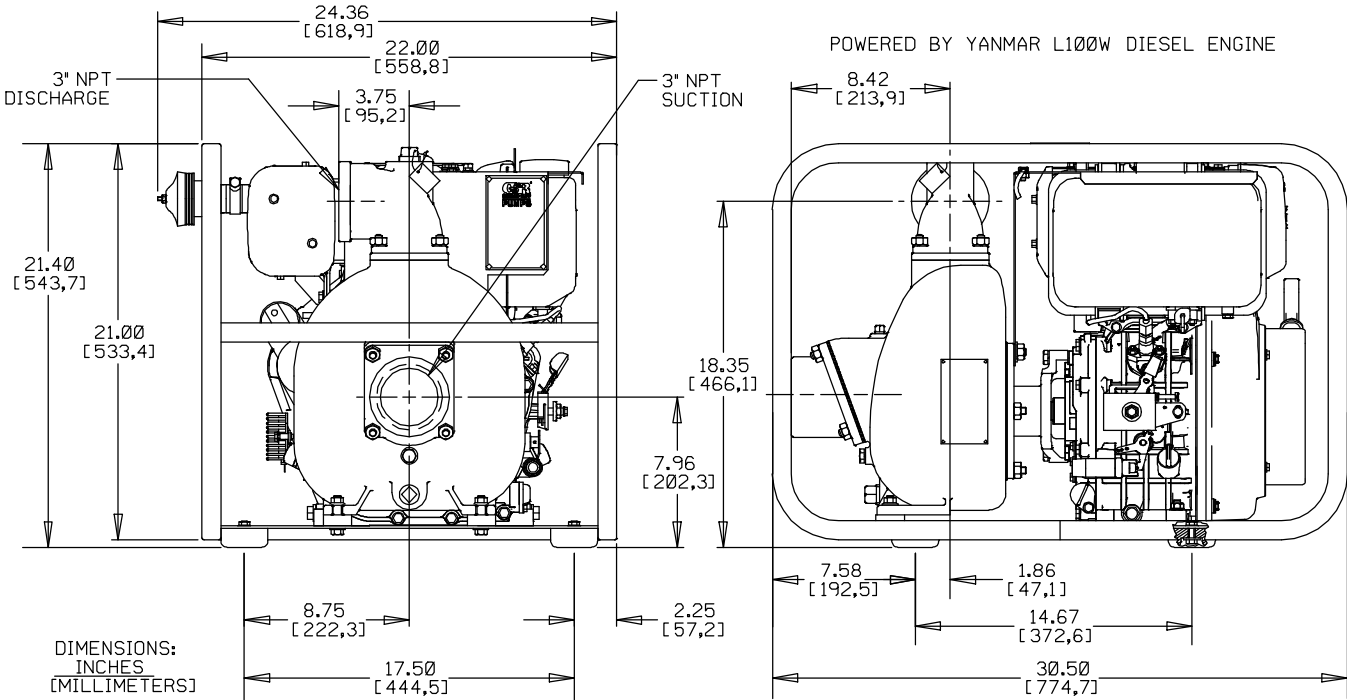
Printed in U.S.A.

Specification Data

SECTION 20, PAGE 289

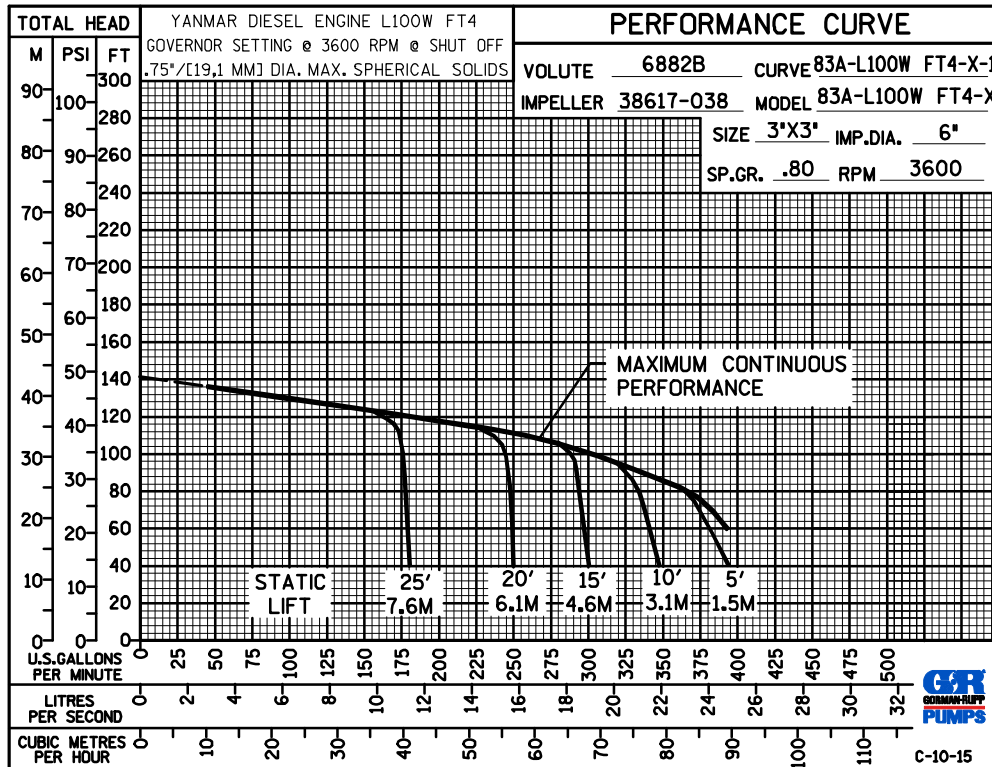
APPROXIMATE
DIMENSIONS and WEIGHTS

NET WEIGHT: 165 LBS. (74,8 KG.)
SHIPPING WEIGHT: 240 LBS. (108,9 KG.)
EXPORT CRATE SIZE: 22.7 CU. FT. (0,6 CU. M.)
 WHEEL KIT ADD 22 LBS. (10 KG.); SHIPPING CRATE (SEPARATE) 3 CU. FT. (0,1 CU. M.).



**PERFORMANCE
BASED ON
PETROLEUM**

**THIS PUMP IS NOT
APPROVED FOR
WATER
APPLICATIONS**



GORMAN-RUPP PUMPS

www.grpumps.com

Specifications Subject to Change Without Notice

Printed in U.S.A.