

# Self Priming Centrifugal Pump



## Model 04B3-F4L

### Size 4" x 4"



Total Head		Capacity Of Pump In U.S. Gallons Per Minute (GPM) At Continuous Performance			
P.S.I.	Feet				
119	275	200	200	200	200
108	250	340	410	410	410
98	225	355	487	520	520
88	200	358	493	600	600
78	175	362	498	620	667
65	150	368	500	623	N/A
54	125	368	502	625	N/A
44	100	370	505	628	N/A
<b>Suction Lift</b>		<b>25'</b>	<b>20'</b>	<b>15'</b>	<b>10'</b>



#### PUMP SPECIFICATIONS

**Size:** 4" x 4" (102 mm x 102 mm) NPT – Female.

**Casing:** Gray Iron 30.

Maximum Operating Pressure 182 psi (1255 kPa).\*

**Enclosed Type, Five Vane Impeller:** Copper Alloy C83600.

Handles 1/2" (12,7 mm) Diameter Spherical Solids.

**Impeller Shaft:** Stainless Steel 17-4 PH.

**Two Replaceable Wear Rings:** Gray Iron 30.

**Removable Cover Plate:** Gray Iron 30; 3 lbs. (1,4 kg).

**Intermediate Bracket:** Gray Iron 30.

**Seal:** Type 2, Mechanical, Self-Lubricated. Carbon Rotating Face. Ni-Resist Stationary Face. Fluorocarbon Elastomers (DuPont Viton® or Equivalent). Stainless Steel 18-8 Cage and Spring. Maximum Temperature of Liquid Pumped 160°F (71°C).\*

**Radial and Thrust Bearing:** Open Double Row Ball.

**Bearing Lubrication:** Grease.

**Flanges:** Gray Iron 30.

**Gaskets:** Resistant Synthetic Rubber and Cork.

**Hardware:** Standard Plated Steel.

**Standard Equipment:** Skid Base.

**Optional Equipment:** Battery. Gray Iron 30 Impeller. Single Axle Pneumatic-Tired Wheel Kit [Tandem Axle Over-the-Road Trailer](#).

\*Consult Factory for Applications Exceeding Maximum Pressure and/or Temperature Indicated.



#### ENGINE SPECIFICATIONS

**Model:** Deutz D914L4.

**Type:** Four Cylinder, Four Cycle, Air Cooled Diesel Engine.

**Displacement:** 263.2 Cu. In. (4,3 Liters).

**Lubrication:** Forced Circulation.

**Air Cleaner:** Oil Bath.

**Fuel Tank:** 38.9 U.S. Gallons (147,3 Liters).

**Full Load Operating Time:** 12.4 Hrs.

**Starter:** 12V Electric.

**Standard Features:** High Oil Temperature, Low Oil Pressure, V-belt, Alternator And Start Failure Safety Shut Down Switches/Indicators. Fuel Level Gauge. Throttle Control. Instrument Panel with: Temperature Gauge, Oil Pressure Gauge, Ammeter, Hourmeter, Tachometer, Start/Stop Key Switch, 15 Amp Fuse. Muffler w/Guard and Weather Cap.

#### DEUTZ PUBLISHED PERFORMANCE:

Maximum Gross Continuous B.H.P.

73.7 (55 kW) @ 2300 RPM



## GORMAN-RUPP PUMPS

www.grpumps.com

Specifications Subject to Change Without Notice

Printed in U.S.A.

**Specification Data**

SECTION 20, PAGE 820

APPROXIMATE  
DIMENSIONS and WEIGHTS

NET WEIGHT:

SKID BASE  
1958 LBS. [888 KG.]

SHIPPING WEIGHT:

2148 LBS. [974 KG.]

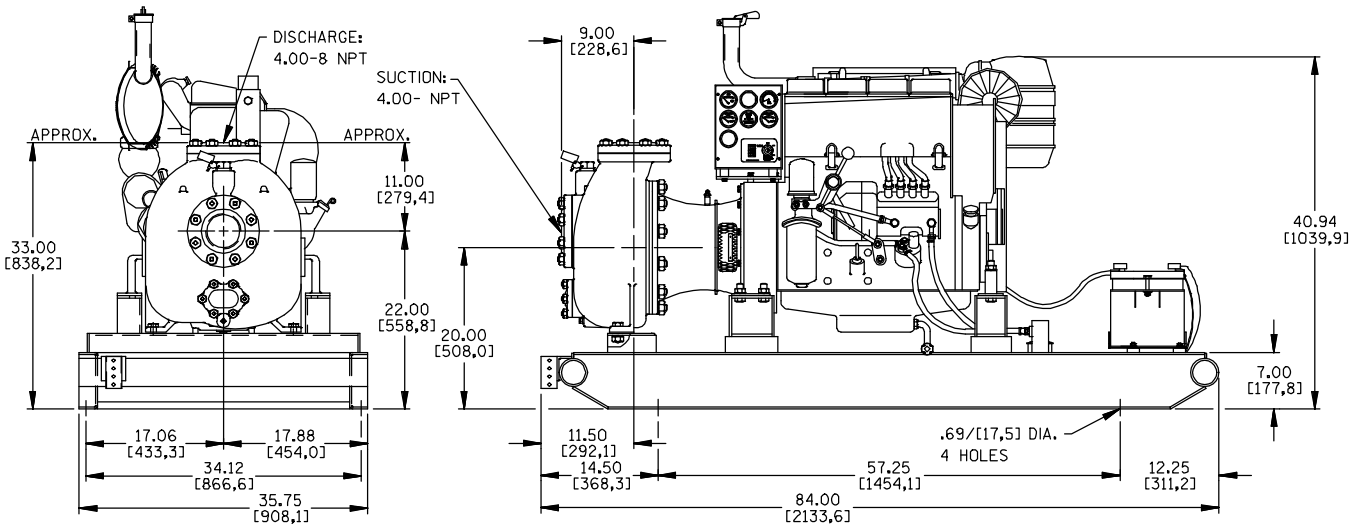
EXPORT CRATE:

130 CU. FT. [3,7 CU. M.]

2-WHEEL

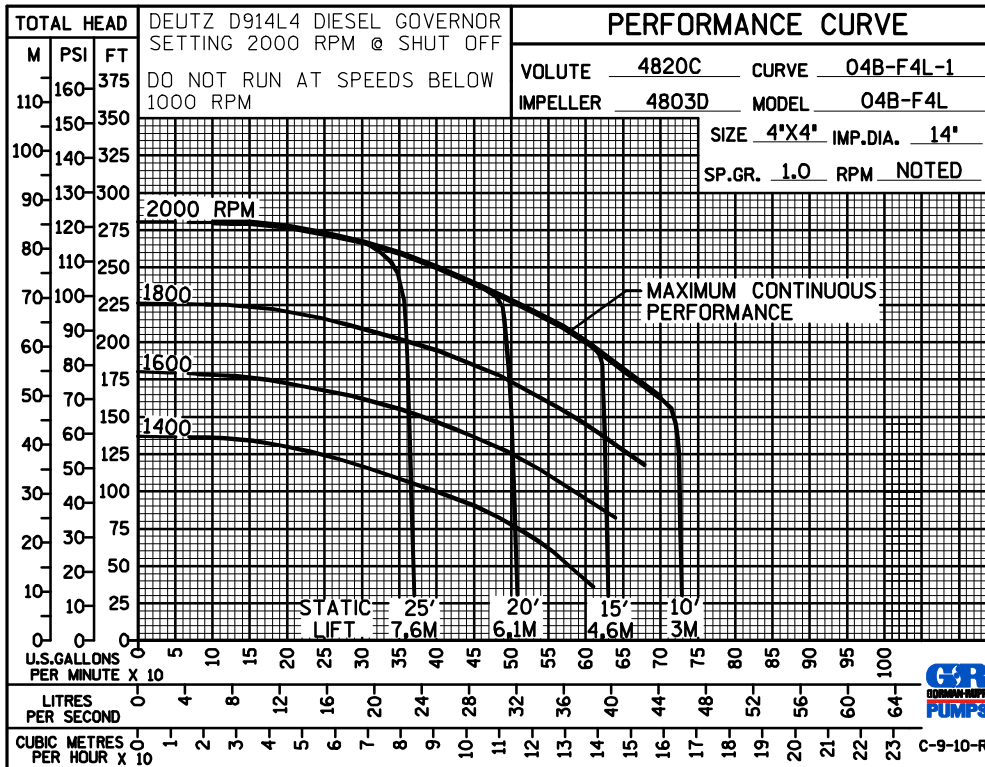
2380 LBS. [1080 KG.]

2380 LBS. [1080 KG.]



POWERED BY DEUTZ D914L4 ENGINE

DIMENSIONS:  
INCHES  
[MILLIMETERS]



**GORMAN-RUPP PUMPS**

www.grpumps.com

Specifications Subject to Change Without Notice

Printed in U.S.A.