

# Self Priming Centrifugal Pump



## Model 03B31-B

### Size 3" x 3"

#### PUMP SPECIFICATIONS

**Size:** 3" x 3" (76 mm x 76 mm) NPT - Female

**Casing:** Ductile Iron 60-40-18.

Maximum Operating Pressure 59 psi (407 kPa).\*

**Enclosed Type, Five Vane Impeller:** Copper Alloy C83600.  
Handles 3/8" (9,5 mm) Diameter Spherical Solids.

**Impeller Shaft:** Carbon Steel 1045.

**Replaceable Vane Plate:** Gray Iron 30.

**Pedestal:** Gray Iron 30.

**Seal Plate:** Ductile Iron 60-40-18.

**Radial and Thrust Bearings:** Open Single Row Ball.  
**Bearing Lubrication:** Grease.

**Flanges:** Ductile Iron 60-40-18.

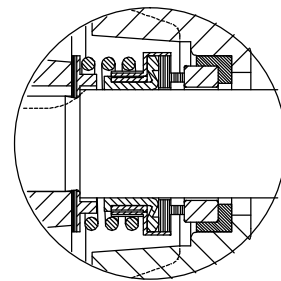
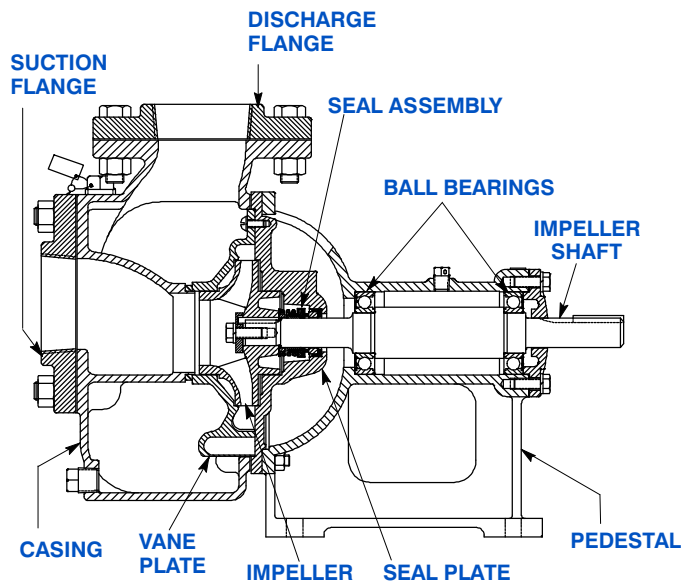
**Gaskets:** Cork <sup>w/</sup>Nitrile Binder NC710.

**Hardware:** Standard Plated Steel



**Optional Equipment:** All Iron Construction. PTFE Seal.

*\*Consult Factory for Applications Exceeding  
Maximum Pressure and/or Temperature Indicated.*



#### SEAL DETAIL:

Type 21, Mechanical Self-Lubricated. Carbon Rotating Face. Ni-Resist Stationary Face. Fluorocarbon Elastomers (DuPont Viton<sup>®</sup> or Equivalent). Stainless Steel 18-8 Cage and Spring. Maximum Temperature of Liquid Pumped, 160°F (71°C).\*



## GORMAN-RUPP PUMPS

www.grpumps.com

Specifications Subject to Change Without Notice

Printed in U.S.A.

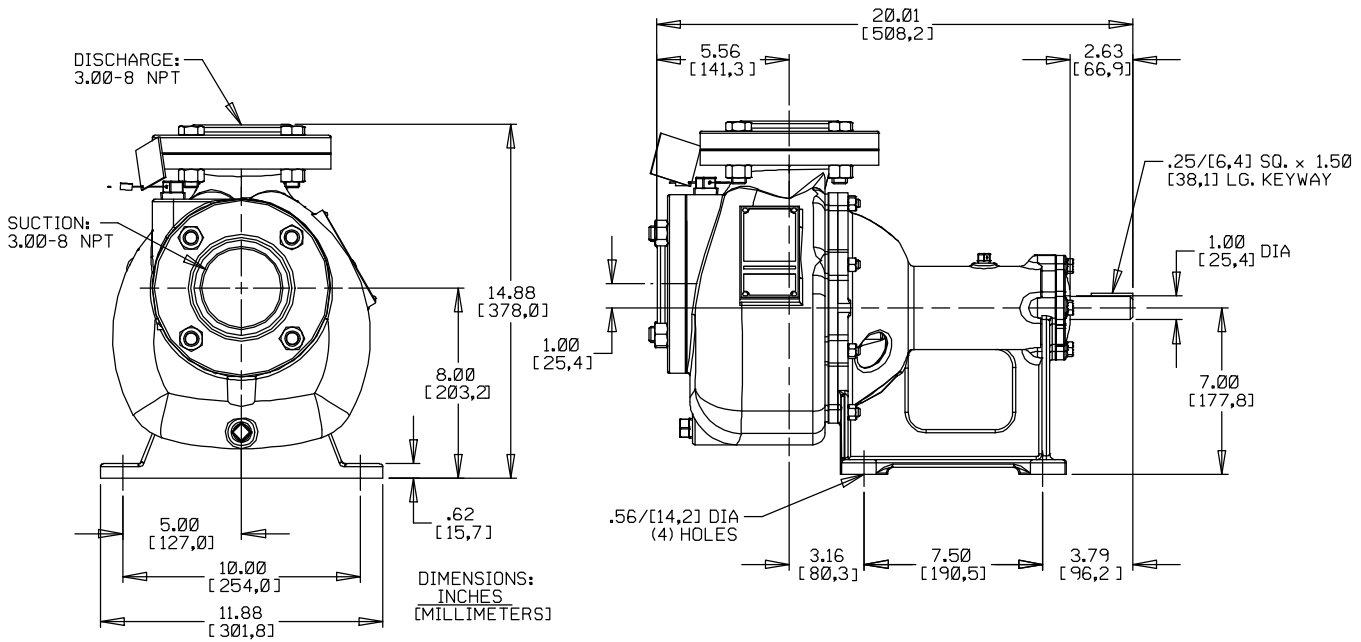
**Specification Data**

SECTION 30, PAGE 1200

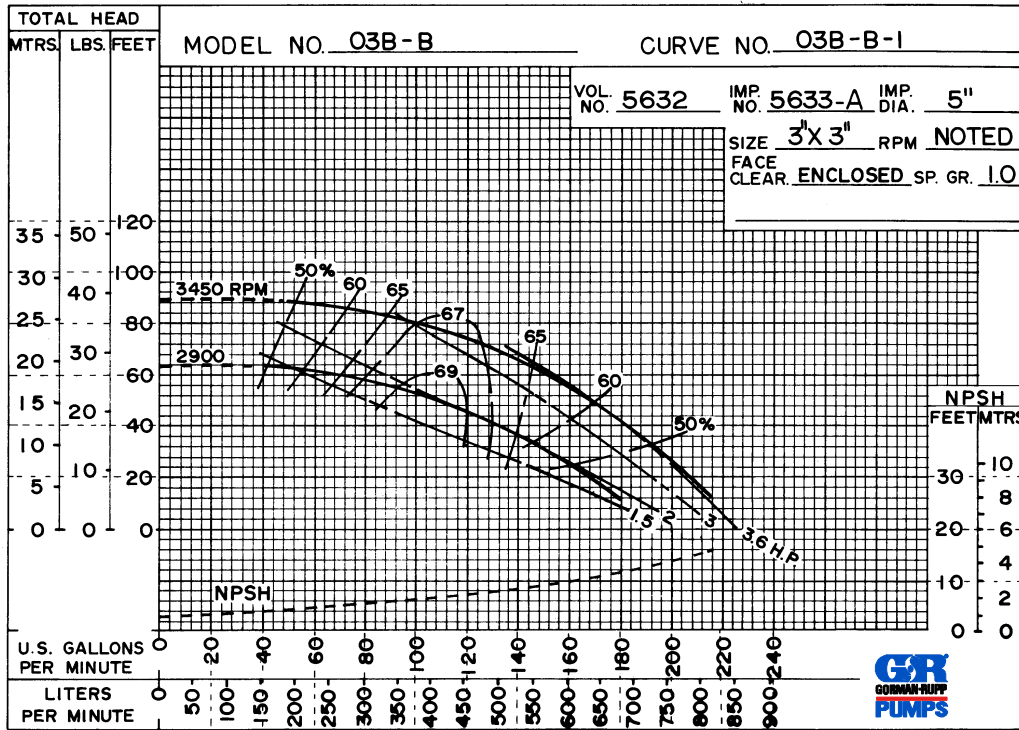
APPROXIMATE  
DIMENSIONS and WEIGHTS

NET WEIGHT:  
SHIPPING WEIGHTS:  
EXPORT CRATE:

109 LBS. (49 KG.)  
119 LBS. (54 KG.)  
3.5 CU. FT. (0,1 CU. M.)



**MULTI-SPEED  
CURVE  
PERFORMANCE  
BASED ON  
WATER**



T-4-15-71 REV.



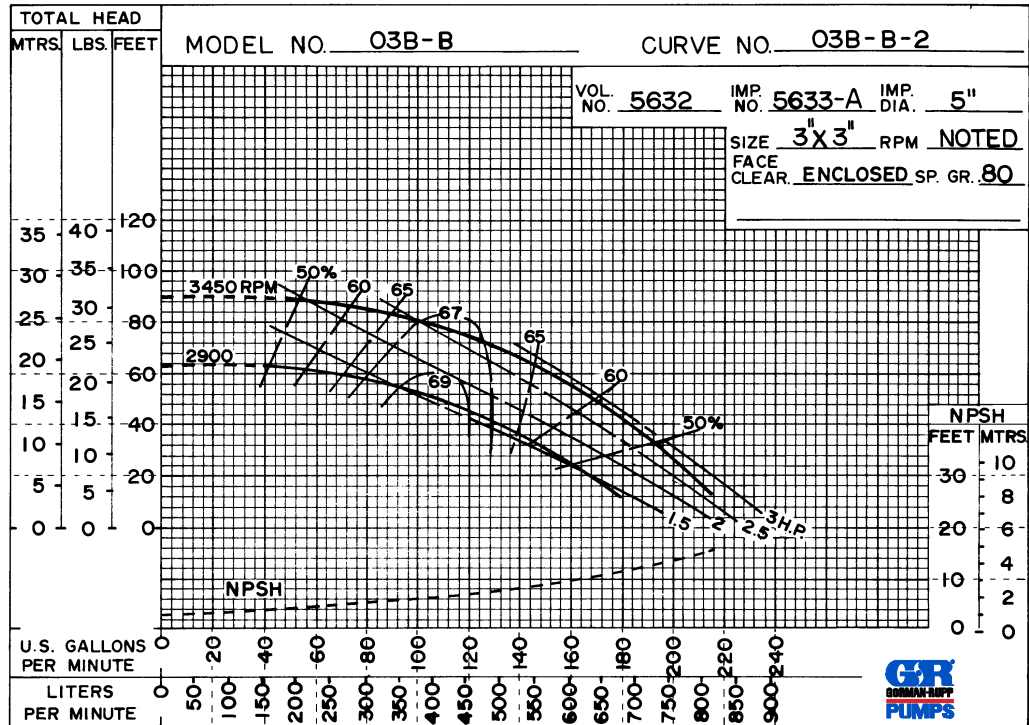
**GORMAN-RUPP PUMPS**

www.grpumps.com

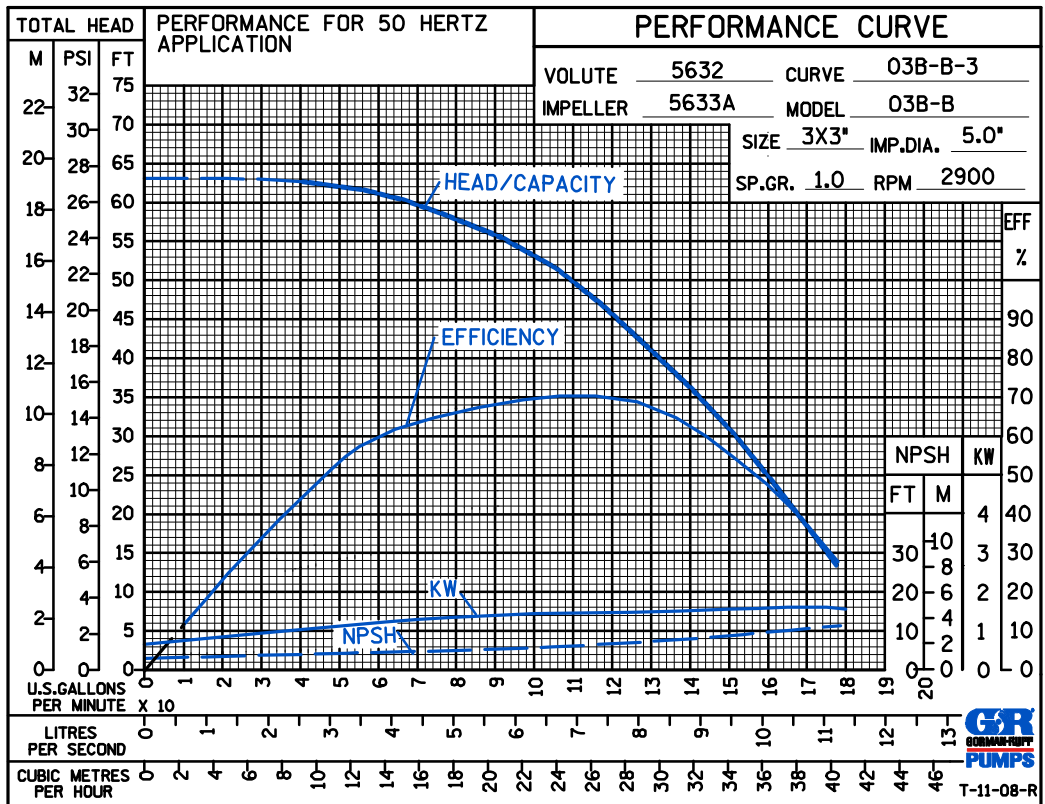
Specifications Subject to Change Without Notice

Printed in U.S.A.

MULTI-SPEED  
CURVE  
PERFORMANCE  
BASED ON  
PETROLEUM



50 HERTZ  
PERFORMANCE  
BASED ON  
WATER



GORMAN-RUPP PUMPS

www.grpumps.com

Specifications Subject to Change Without Notice

Printed in U.S.A.