

## Basic Pump

## Self Priming Centrifugal Pump

## Model RS2A31-BAR and RS2A32-BAR

## Size 3" x 2"



## PUMP SPECIFICATIONS

**Size:** 3" x 2" (76 x 51 mm) Flanged.

**Casing:** (RS2A31-BAR) Ductile Iron 65-45-12.  
(RS2A32-BAR) Cast Steel 70-36.

Maximum Operating Pressure 48 psi (331 kPa).\*

**Enclosed Type, Four Vane Impeller:** Aluminum 356-T6.

Handles 1/4" (6,4 mm) Diameter Spherical Solids.

**Impeller Shaft:** Steel 1045.

**Rotor:** Copper Alloy C93200.

**Bearing Housing:** Ductile Iron 65-45-12.

**Bearing Housing Lubrication:** Grease.

**Body Cover:** (RS2A31-BAR) Ductile Iron 65-45-12.  
(RS2A32-BAR) Cast Steel 70-36.

**Center/Spacer Plate:** (RS2A31-BAR) Ductile Iron 65-45-12.  
(RS2A32-BAR) Cast Steel 70-36.

**Suction Spool Flange:** Cast Steel 70-36.

**Radial Bearing:** Permanently Sealed Single Row Ball Type.

**Thrust Bearing:** Permanently Sealed Single Row Ball Type.

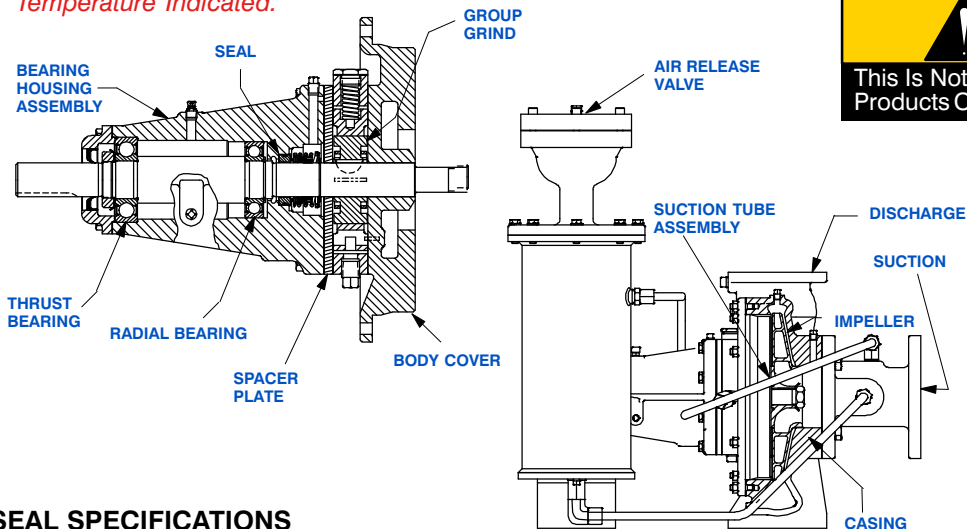
**Gaskets:** Buna-N and PTFE.

**Priming:** Rotary Vane Type Priming Pump.

**Air Release Valve:** (RS2A31-BAR) Ductile Iron/Stainless Steel.  
(RS2A32-BAR) Steel/Stainless Steel.

**Optional Equipment:** Cast Steel 70-36 Threaded Suction and Discharge Companion Flange Kit, Copper Alloy C93700 Impeller, Group Grind with Cast Iron Rotor (RS2A31-BAR Only), Stainless Steel 416 Impeller Shaft, Buna-N Seal, PTFE Seal with Fluorocarbon O-Ring, PTFE Seal with Buna-N O-Ring, Oil Filled Bearing Housing Assembly.

\*Consult Factory for Applications Exceeding Maximum Pressure and/or Temperature Indicated.



## SEAL SPECIFICATIONS

**Seal:** Mechanical; Self-Lubricated. Fluorocarbon Elastomers (DuPont Viton® or Equivalent). Carbon Rotating Face; Ni-Resist Stationary Face; Maximum Temperature of Liquid Pumped is 160°F (71°C).\*



GORMAN-RUPP PUMPS

www.grpumps.com

Specifications Subject to Change Without Notice

Printed in U.S.A.

**Specification Data**

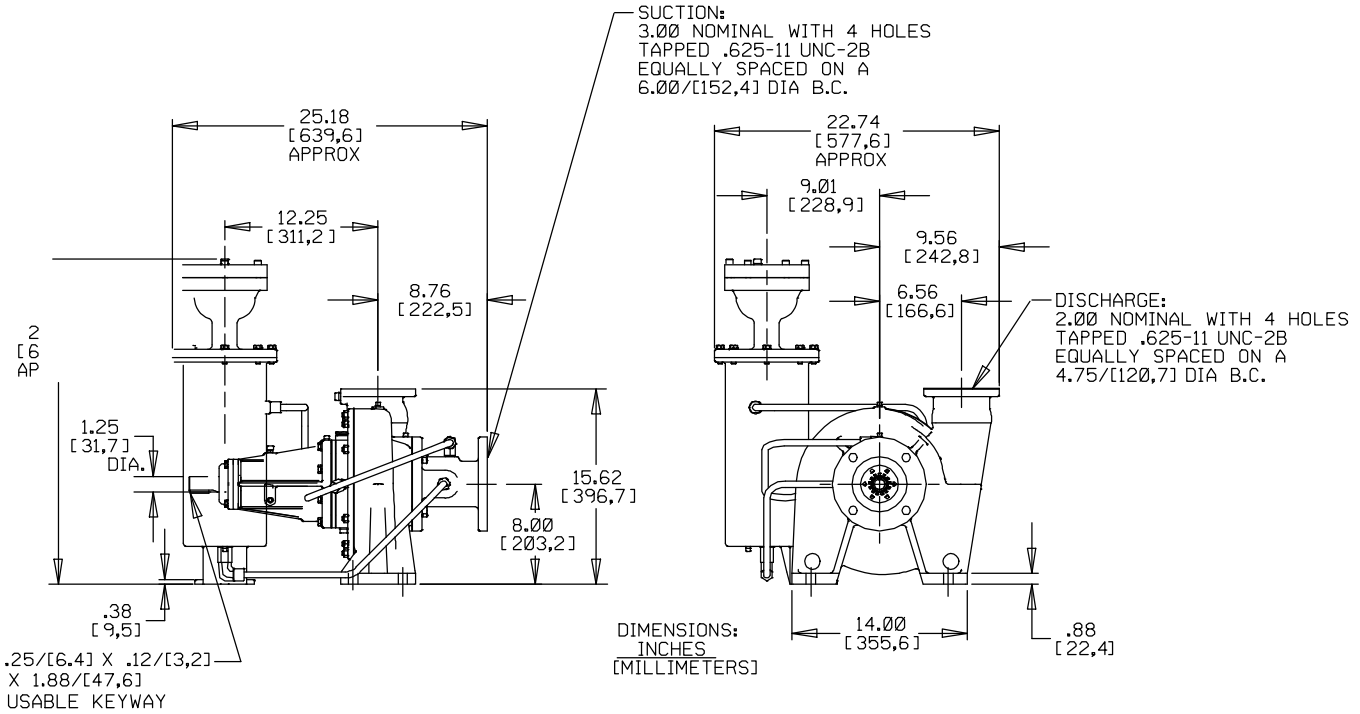
SECTION 35, PAGE 110

OVERALL DIMENSIONS  
and  
APPROXIMATE WEIGHTS

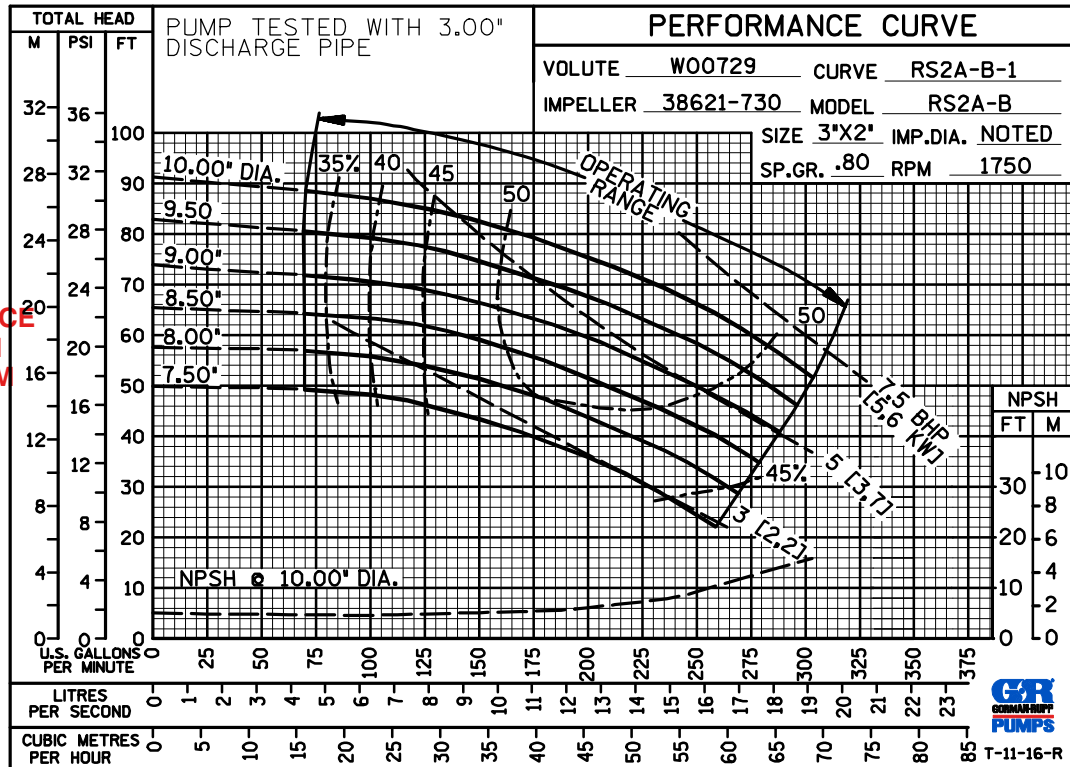
RS2A31-BAR

RS2A32-BAR

**PUMP NET WEIGHT:** 231 LBS. (104,8 KG.) 229 LBS. (103,9 KG.)  
**SHIPPING NET WEIGHT:** 246 LBS. (111,6 KG.) 239 LBS. (108,4 KG.)  
**EXPORT CRATE SIZE:** 18 CU. FT. (0,5 CU. M.)



**PERFORMANCE  
BASED ON  
PETROLEUM  
TRIMMED  
IMPELLER**



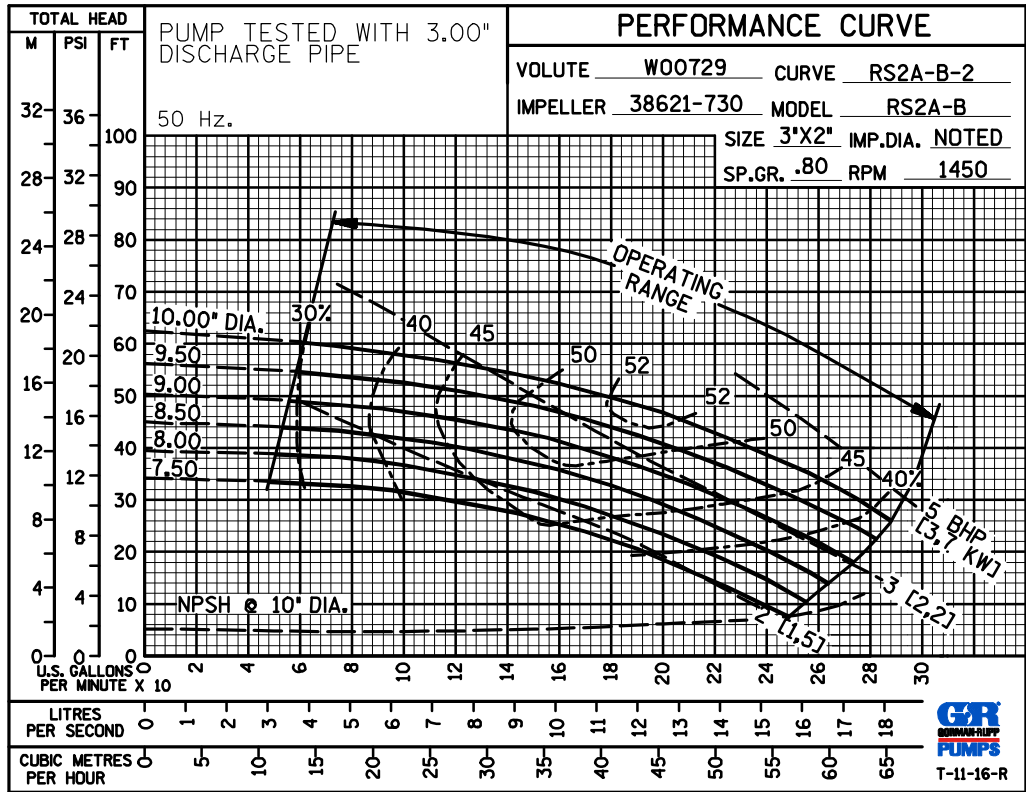
**GORMAN-RUPP PUMPS**

www.grpumps.com

Specifications Subject to Change Without Notice

Printed in U.S.A.

**50 HERTZ  
PERFORMANCE  
BASED ON-  
PETROLEM  
TRIMMED  
IMPELLER**



GORMAN-RUPP PUMPS

www.grpumps.com

Specifications Subject to Change Without Notice

Printed in U.S.A.