



**Sound Attenuated  
Diesel Engine Driven  
Environmental Silent Pump  
Priming Assisted Centrifugal Pump  
w/Autostart  
Model PA4A60D-4045T S5-ESP  
Size 4" x 4"**



Total Head		Capacity of Pump in U.S. Gallons per Minute (GPM) at Continuous Performance				
P.S.I.	Feet	200	200	200	200	200
61.6	142	200	200	200	200	200
52.0	120	408	545	675	750	750
43.4	100	428	580	730	854	990
34.7	80	432	589	740	867	1000
26.0	60	437	591	744	871	1010
17.3	40	438	592	746	876	1015
<b>Suction Lift</b>		<b>25'</b>	<b>20'</b>	<b>15'</b>	<b>10'</b>	<b>5'</b>



**PUMP SPECIFICATIONS**

**Size:** 4" x 4" (102 mm x 102 mm) Flanged.  
**Casing:** Gray Iron 30.  
 Maximum Operating Pressure 104 psi (717 kPa).\*  
**Semi-Open Type, Two Vane Impeller:** Ductile Iron 65-45-12.  
 Handles 3" (76,2 mm) Diameter Spherical Solids.  
**Impeller Shaft:** Stainless Steel 17-4 PH.  
**Replaceable Wear Plate:** Carbon Steel 1015.  
**Bearing Housing:** Gray Iron 30.  
**Seal Plate:** Gray Iron 30.  
**Seal:** Cartridge Type, Mechanical, Oil-Lubricated, Double Floating, Self-Aligning. Silicon Carbide Rotating and Stationary Faces. Stainless Steel 316 Stationary Seat. Fluorocarbon Elastomers (DuPont Viton® or Equivalent). Stainless Steel 18-8 Cage and Spring. Maximum Temperature of Liquid Pumped 160°F (71°C).\*  
**Shaft Sleeve:** Alloy Steel 4130.  
**Priming Chamber:** Gray Iron 30 Housing w/Stainless Steel Float and Linkage.  
**Discharge Check Valve:** Ductile Iron Housing with Welded Nickel Seat and Buna-N Flapper.  
**Radial Bearing:** Open Single Row Ball.  
**Thrust Bearing:** Open Double Row Ball.  
**Bearing and Seal Cavity Lubrication:** SAE 30 Non-Detergent Oil.  
**Gaskets:** PTFE, Rubber, Cork and Vegetable Fiber.  
**O-Rings:** Buna-N.  
**Hardware:** Standard Plated Steel.  
**Bearing and Seal Cavity Oil Level Sight Gauges.**  
 \*Consult Factory for Applications Exceeding Maximum Pressure and/or Temperature Indicated.  
**Standard Equipment:** Belt-Driven Diaphragm Primer. Hoisting Bail. Soundproof (EPA Average 73 dBA at 23 feet [7 meters] Under Load) Lightweight Aluminum Enclosure - Removable for Maintenance of Pump or Engine - w/Padlockable Door Panels. Combination Skid Base w/Fuel Tank. [Full Feature Control Panel](#) [Single Ball Type Float Switch](#) \*\*  
**Optional Equipment:** Battery. High Speed (55 MPH/89 KM/H) Single Axle Pneumatic-Tired Wheel Kit w/w/o DOT-Approved Lights and Electric Brakes. [Tandem Axle Over-the-Road Trailer](#) (Meets DOT Requirements) Available w/ Either Electric or Hydraulic Surge Brakes, Running Lights, Jack Stands and Safety Cables/Chains. Liquid Level Transducer. Skid Base Kit.  
 \*\*50 Ft. (15 m) Standard Length; Dual Switches and Alternate Cable Lengths Available From the Factory.

**WARNING!**

Do not use in explosive atmosphere or for pumping volatile flammable liquids.

**ENGINE SPECIFICATIONS**

**Model:** John Deere 4045T.  
**EPA Tier:** Stage 5.  
**Type:** Four Cylinder, Turbocharged, Diesel Engine.  
**Displacement:** 275 Cu. In. (4,5 liters).  
**Lubrication:** Forced Circulation.  
**Air Cleaner:** Dry Type.  
**Fuel Tank:** 70 U.S. Gals. (265 liters).  
**Full Load Operating Time:** 28.0 Hrs.  
**Starter:** 12V Electric.  
**Standard Features:** Muffler w/Guard and Weather Cap, DOC/DPF Exhaust After-Treatment System.  
**Engine Control Features:** Padlockable Box with Throttle Control, Tachometer, Coolant Temperature, Oil Pressure, Voltage and Overstart Indicators/Shutdowns. Manual/Stop/Auto Keyswitch. Audible Startup Warning Delay. Fuel Level Display/Alarm/Shutdown. Electronic Fuel Level Sensor.

**JOHN DEERE PUBLISHED PERFORMANCE:**  
 Maximum Net Continuous BHP  
 74 (55 kW) @ 2400 RPM



**GORMAN-RUPP PUMPS**

www.grpumps.com

Specifications Subject to Change Without Notice

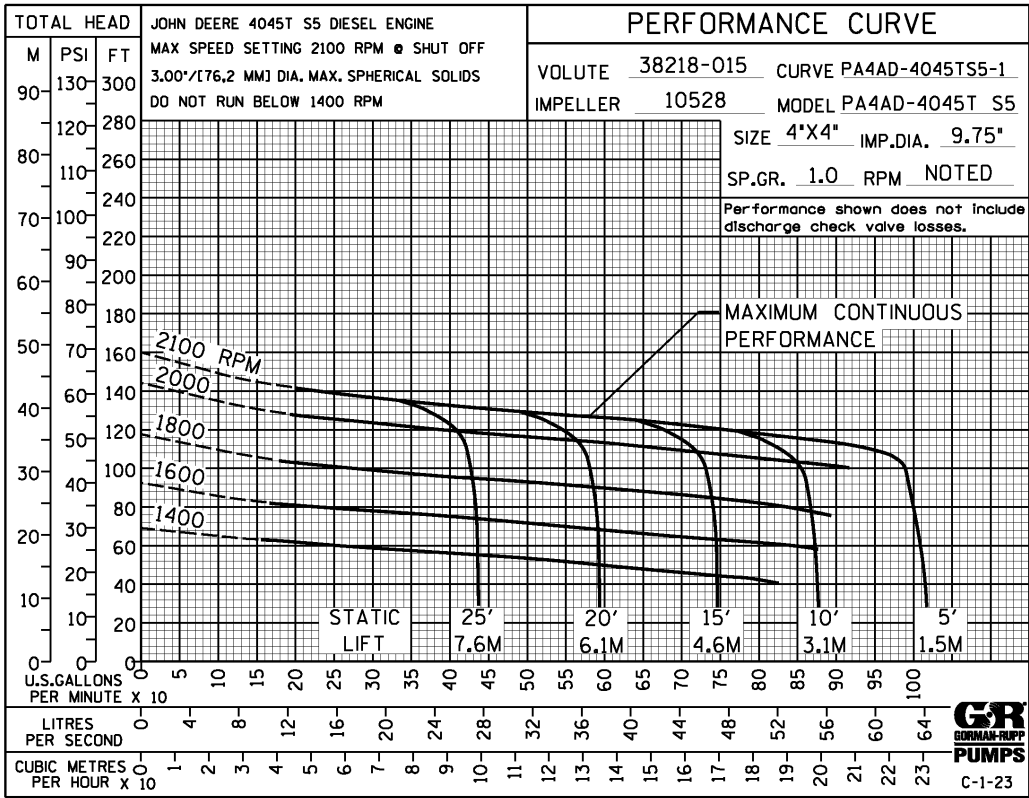
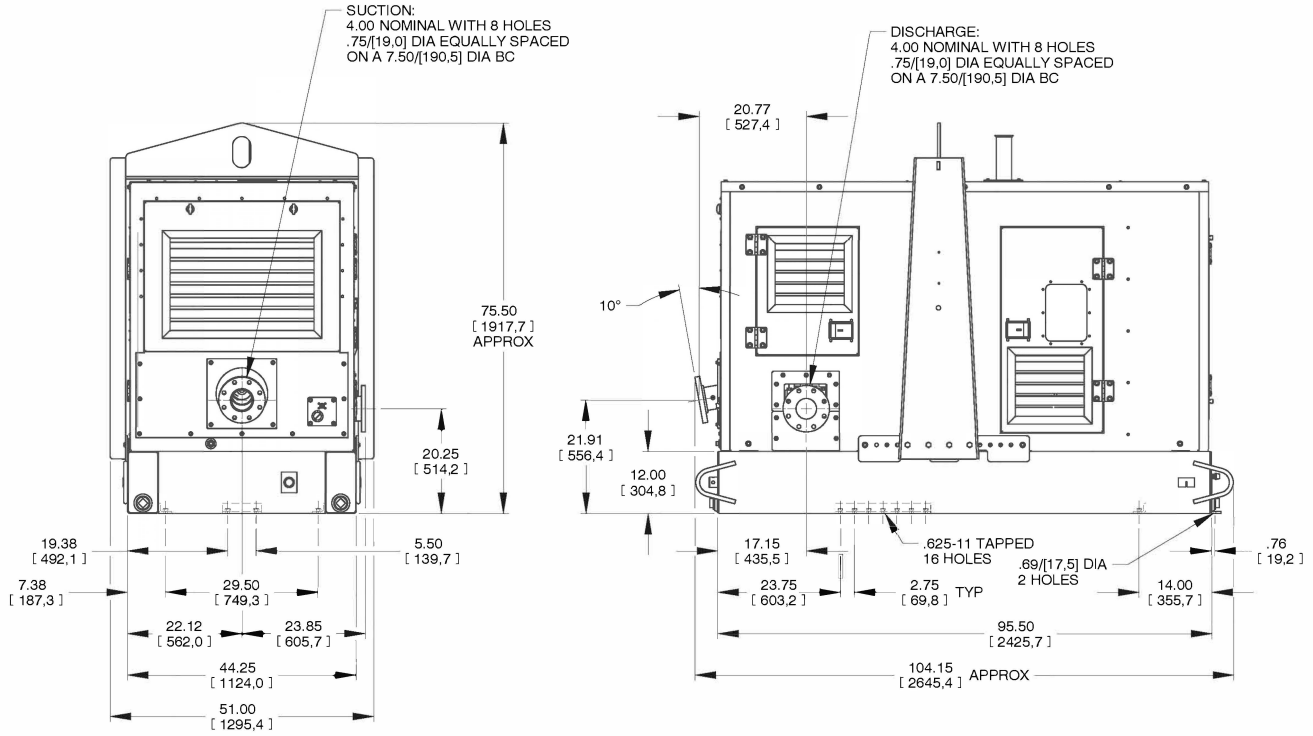
Printed in U.S.A.

**Specification Data**

APPROXIMATE DIMENSIONS and WEIGHTS

**NET WEIGHT: 3670 LBS. (1664,7 KG.)**  
**SHIPPING WEIGHT: 3930 LBS. (1782,6 KG.)**  
**EXPORT CRATE SIZE: 273 CU. FT. (7,7 CU. M.)**

SECTION 42, PAGE 232



**GORMAN-RUPP PUMPS**

www.grpumps.com

Specifications Subject to Change Without Notice

Printed in U.S.A.