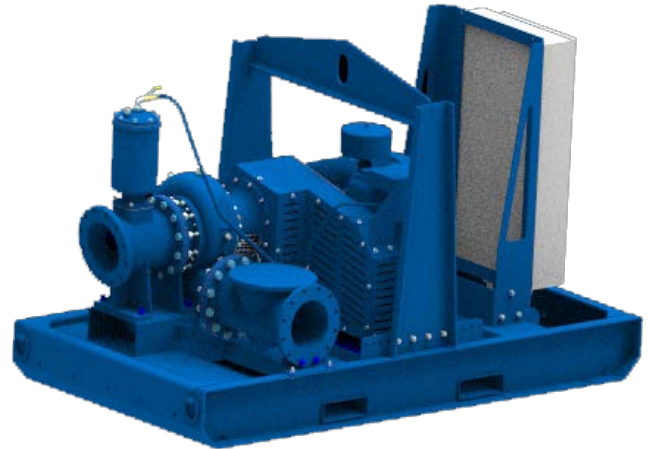




# Priming Assisted Centrifugal Pump Model PA10A60-B-E100 460/3 and PA10A60-B-E100 575/3 Size 10" x 10"



| Total Head          |      | Capacity of Pump in U.S. Gallons per Minute (GPM) at Continuous Performance |            |            |            |           |
|---------------------|------|---|------------|------------|------------|-----------|
| P.S.I.              | Feet |   |            |            |            |           |
| 49.4                | 114  | 1000  | 1000       | 1000       | 1000       | 1000      |
| 47.7                | 110  | 1220  | 1220       | 1220       | 1220       | 1220      |
| 43.3                | 100  | 1660  | 1820       | 1820       | 1820       | 1820      |
| 39.0                | 90   | 1860  | 2260       | 2560       | 2560       | 2560      |
| 34.7                | 80   | 1930  | 2460       | 2940       | 3080       | 3080      |
| 30.3                | 70   | 1980  | 2540       | 3050       | 3440       | 3480      |
| 26.0                | 60   | 2020  | 2580       | 3100       | 3600       | 3720      |
| 21.7                | 50   | 2060  | 2610       | 3140       | 3680       | 3880      |
| 17.3                | 40   | 2100  | 2640       | 3180       | 3720       | 3980      |
| 13.0                | 30   | 2140  | 2670       | 3220       | 3760       | 4040      |
| 8.7                 | 20   | 2180  | 2700       | 3260       | 3800       | 4100      |
| <b>Suction Lift</b> |      | <b>24'</b>  | <b>20'</b> | <b>15'</b> | <b>10'</b> | <b>5'</b> |



**PUMP SPECIFICATIONS**

**Size:** 10" x 10" (254 mm x 254 mm) Flanged.  
**Casing:** Gray Iron 30. Maximum Operating Pressure 74 psi (510 kPa). \*  
**Semi-Open Type, Two Vane Impeller:** Ductile Iron 65-45-12.  
 Handles 3.25" (82,6 mm) Diameter Spherical Solids.  
**Suction Spool:** Gray Iron 30.  
**Impeller Shaft:** Stainless Steel 17-4 PH.  
**Replaceable Wear Ring:** Ductile Iron 80-55-06.  
**Intermediate:** Gray Iron 30.  
**Seal Plate:** Gray Iron 30.  
**Seal:** Cartridge Type, Mechanical, Oil-Lubricated, Double Floating, Self-Aligning. Silicon Carbide Rotating and Stationary Faces. Stainless Steel 316 Stationary Seat. Fluorocarbon (DuPont Viton® or Equivalent) Elastomers. Stainless Steel 316 Cage and Spring. Maximum Temperature of Liquid Pumped 160°F (71°C). \*  
**Discharge Check Valve:** Ductile Iron Housing w/Welded Nickel Seat and Buna-N Flapper.  
**Priming Chamber:** Gray Iron 30 Housing w/Stainless Steel Float and Linkage.  
**Radial Bearing:** Open Single Row Ball.  
**Thrust Bearing:** Open Double Row Ball.  
**Bearing and Seal Cavity Lubrication:** SAE 30 Non-Detergent Oil.  
**Gaskets:** Resistant Synthetic Rubber and Vegetable Fiber.  
**O-Rings:** Buna-N.  
**Hardware:** Standard Plated Steel.  
**Bearing and Seal Cavity Oil Level Sight Gauges.**  
*\*Consult Factory for Applications Exceeding Maximum Pressure and/or Temperature Indicated.*  
**Standard Equipment:** Belt-Driven Air Compressor. Hoisting Bail. Combination Skid Base w/Fuel Tank.  
**Optional Equipment:** Suction Vacuum and Discharge Pressure Gauge Kit. GR Hard Iron Impeller. Variable Frequency Controller. Tandem Axle Over-the-Road Trailer. EPS w/Submersible Transducer Liquid Level Sensor.

*\*\*50 Ft. (15 m) Standard Length; Dual Switches and Alternate Cable Lengths Available From the Factory.*

**WARNING!**

Do not use in explosive atmosphere or for pumping volatile flammable liquids.

**MOTOR SPECIFICATIONS‡**

**Type:** Totally Enclosed Fan Cooled.  
**Frame Size:** 405TZ.  
**Power:** 100 H.P. (75 kW).  
**Hz:** 60.  
**S.F.:** 1.15.  
**Speed:** 1800 RPM Nominal.  
**Locked Rotor kVA Code:** G.  
**Bearings:** Roller Type.

**Model PA10A60-B-E100 460/3**

**Voltage/Phase:** 460/3.  
**Full Load Amps:** 118.

**Model PA10A60-B-E100 575/3**

**Voltage/Phase:** 575/3.  
**Full Load Amps:** 97.5.

**CONTROL SPECIFICATIONS**

Pump control with NEMA Type 3R Rain and Sleet (Ice) Resistant Enclosure. Carbon Steel with Powder Coat, Liquid Level Circuit, Elapsed Time Meter, Hand Off/Auto Switch Control with Reduced Voltage Soft Starters and 250 Amp Circuit Breaker.

*‡ Standard Specifications Shown. Alternate Motors Available - Consult Factory.*



**GORMAN-RUPP PUMPS**

www.grpumps.com

Specifications Subject to Change Without Notice

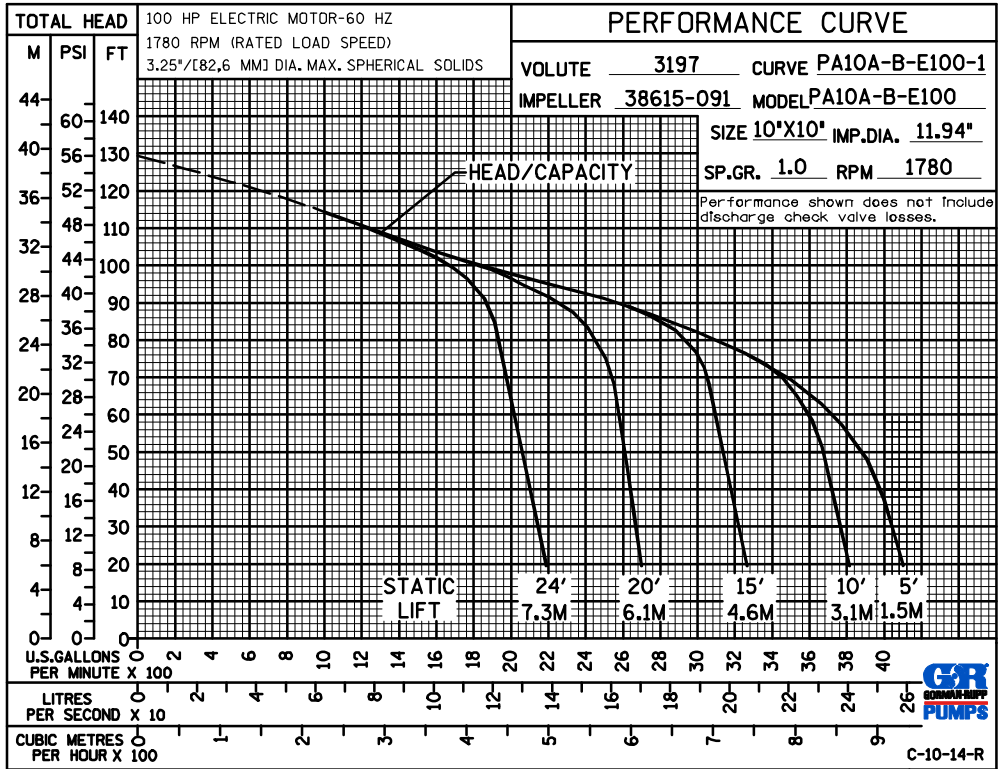
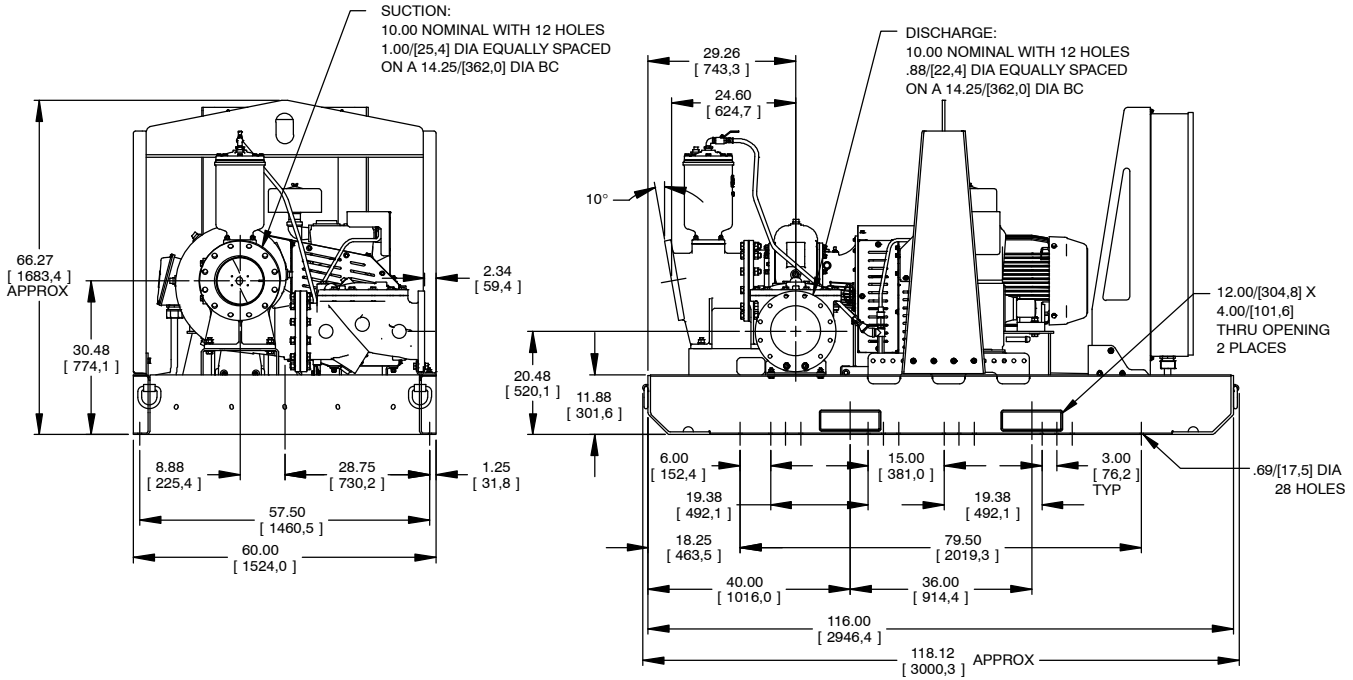
Printed in U.S.A.

**Specification Data**

SECTION 42, PAGE 1401

APPROXIMATE  
DIMENSIONS and  
WEIGHTS

|                           |                          |                      |
|---------------------------|--------------------------|----------------------|
|                           | <b>SKID BASE</b>         | <b>2-WHEEL</b>       |
| <b>NET WEIGHT:</b>        | 4705 LBS. (2134 KG.)     | 5880 LBS. (2667 KG.) |
| <b>SHIPPING WEIGHT:</b>   | 5115 LBS. (2320 KG.)     | 5880 LBS. (2667 KG.) |
| <b>EXPORT CRATE SIZE:</b> | 316 CU. FT. (8,9 CU. M.) |                      |



**GORMAN-RUPP PUMPS**

www.grpumps.com

Specifications Subject to Change Without Notice

Printed in U.S.A.