

**Diesel Engine Driven/Sound Attenuated  
Priming Assisted Centrifugal  
Environmental Silent Pump w/Autostart**



**Model PA12A60-B-4045H FT4-ESP**

**Size 12" x 12"**



| Total Head          |      | Capacity of Pump in U.S. Gallons per Minute (GPM) at Continuous Performance |            |            |            |           |
|---------------------|------|---|------------|------------|------------|-----------|
| P.S.I.              | Feet |   |            |            |            |           |
| 45.1                | 104  | 1100  | 1100       | 1100       | 1100       | 1100      |
| 43.4                | 100  | 2000  | 2300       | 2300       | 2300       | 2300      |
| 39.0                | 90   | 2700  | 3620       | 3750       | 3750       | 3750      |
| 34.7                | 80   | 3010  | 4120       | 4650       | 4700       | 4700      |
| 30.4                | 70   | 3090  | 4250       | 5050       | 5200       | 5430      |
| 26.0                | 60   | 3150  | 4300       | 5100       | 5710       | 5900      |
| 22.7                | 50   | 3200  | 4350       | 5150       | 5810       | 6040      |
| 17.3                | 40   | 3290  | 4400       | 5200       | 5900       | 6100      |
| 13.0                | 30   | 3340  | 4450       | 5250       | 5910       | 6190      |
| <b>Suction Lift</b> |      | <b>25'</b>  | <b>20'</b> | <b>15'</b> | <b>10'</b> | <b>5'</b> |



**PUMP SPECIFICATIONS**

**Size:** 12" x 12" (305 mm x 305 mm) Flanged.  
**Casing:** Gray Iron 30. Maximum Operating Pressure 71 psi (490 kPa).\*  
**Enclosed Type, Three Vane Impeller:** Ductile Iron 60-40-18.  
 Handles 3" (76.2 mm) Diameter Spherical Solids.  
**Impeller Shaft:** Stainless Steel 17-4 PH.  
**Shaft Sleeve:** Stainless Steel 304.  
**Replaceable Wear Rings:** Impeller - Ductile Iron 80-60-03.  
 Suction Head - Copper Alloy C93200.

**Seal Plate:** Gray Iron 30.  
**Bearing Housing:** Gray Iron 30.  
**Seal:** Mechanical, Oil-Lubricated, Double Floating, Self-Aligning. Silicon Carbide Rotating and Stationary Faces. Stainless Steel 316 Stationary Seat. Fluorocarbon Elastomers (DuPont Viton® or Equivalent). Stainless Steel 18-8 Cage and Spring.  
 Maximum Temperature of Liquid Pumped 160°F (71°C).\*  
**Priming Chamber:** Gray Iron 30 Housing w/Stainless Steel Float and Linkage.  
**Discharge Check Valve:** Ductile Iron Housing w/Buna-N Flapper.  
**Radial Bearing:** Open Single Row Roller.  
**Thrust Bearings:** Open Single Row Ball.  
**Bearing and Seal Cavity Lubrication:** SAE 30 Non-Detergent Oil.  
**Flanges:** Gray Iron 30.  
**Gaskets:** Vegetable Fiber, Buna-N, Resistant Synthetic Rubber and Cork.  
**O-Rings:** Buna-N and Neoprene.  
**Hardware:** Standard Plated Steel.  
**Bearing and Seal Cavity Oil Level Sight Gauges.**

\*Consult Factory for Applications Exceeding Maximum Pressure and/or Temperature Indicated.

**Standard Equipment:** Gear-Driven Air Compressor. Hoisting Bail. Sound-proof (EPA Average (not available) dBA at 23 feet [7 meters] Under Load) Lightweight Aluminum Enclosure - Removable for Maintenance of Pump or Engine - w/Lockable Door Panels. [Single Ball Type Float Switch](#). Combination Skid Base w/Fuel Tank. [Full Feature Control Panel](#).\*\*

**Optional Equipment:** Strainer. Battery. GR Hard Iron Impeller and Seal Plate. Heated Priming Chamber Kit. NPT Suction and Discharge Flange Kits. Liquid Level Transducer.

\*\*50 Ft. (15 m) Standard Length; Dual Switches and Alternate Cable Lengths Available From the Factory.

**WARNING!**  
Do not use in explosive atmosphere or for pumping volatile flammable liquids.

**ENGINE SPECIFICATIONS**

**Model:** John Deere 4045HFC06.  
**EPA Tier:** Tier 4.  
**Type:** Turbocharged Four Cylinder, Diesel Engine with Air Compressor.  
**Displacement:** 276 Cu. In. (4,5 Liters).  
**Lubrication:** Forced Circulation.  
**Air Cleaner:** Dry Type.  
**Fuel Tank:** 206 U.S. Gals. (778 Liters).  
**Full Load Operating Time:** 25.5 Hrs.  
**Starter:** 12V Electric.  
**Standard Features:** Muffler with Guard and Weather Cap. DOC/SCR Exhaust After Treatment System.  
**Engine Control Features:** Padlockable Box with Throttle Control, Tachometer, Coolant Temperature, Oil Pressure, Voltage and Overstart Indicators/Shutdowns. Manual/Stop/Auto Keyswitch. Audible Startup Warning Delay. Fuel Level Display/Alarm/Shutdown.

**JOHN DEERE PUBLISHED PERFORMANCE:**  
 Maximum Gross BHP (Industrial/Heavy Duty)  
 156 (116 kW) @ 2200 RPM



**GORMAN-RUPP PUMPS**

www.grpumps.com

Specifications Subject to Change Without Notice

Printed in U.S.A.

**Specification Data**

SECTION 42, PAGE 1805

APPROXIMATE DIMENSIONS and WEIGHTS

NET WEIGHT:

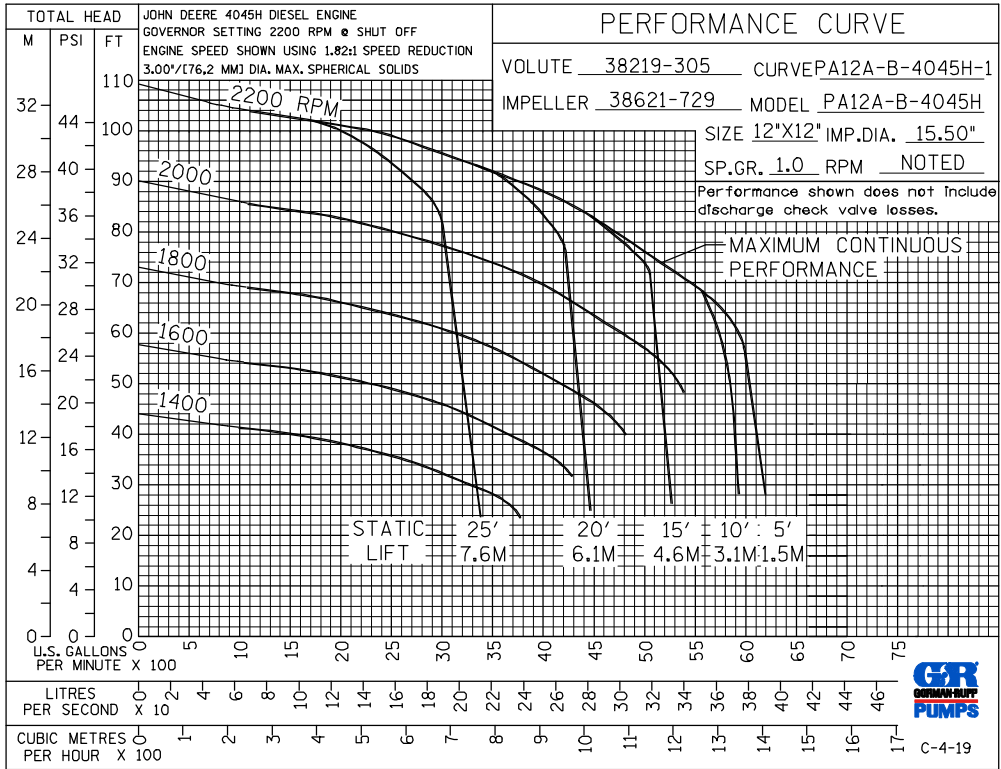
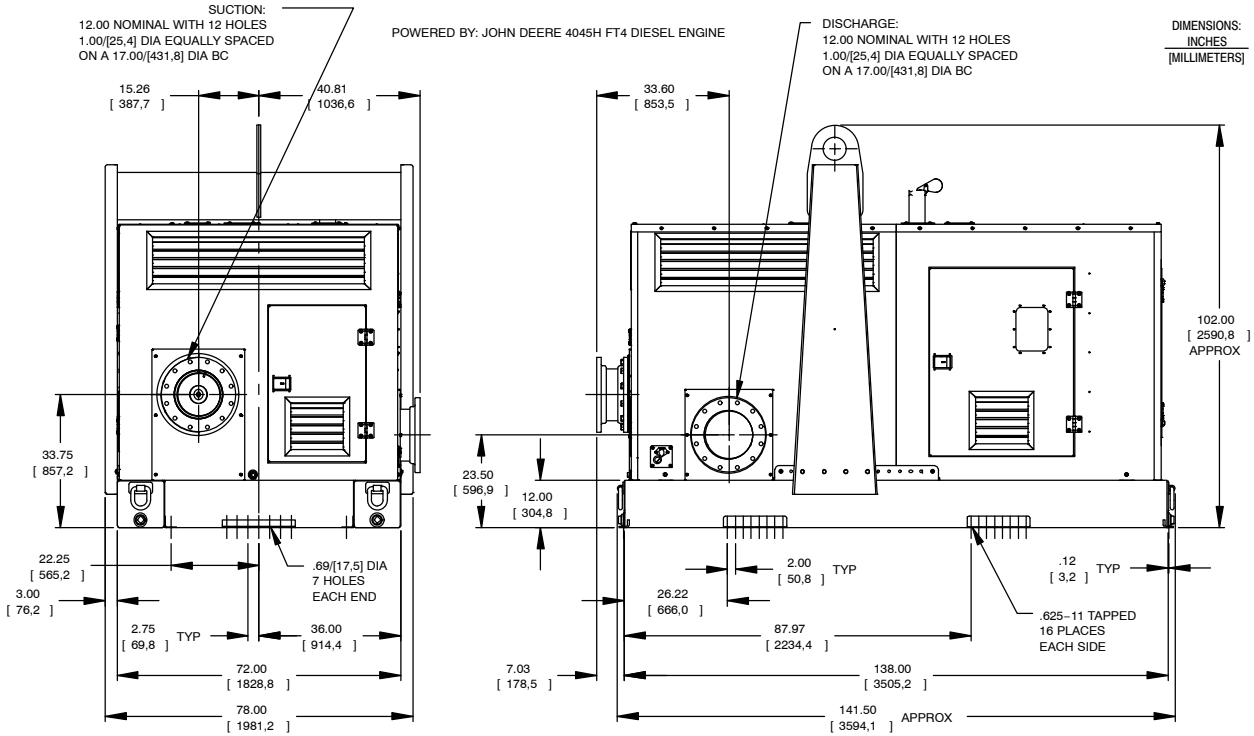
8850 LBS. (4014 KG.)

SHIPPING WEIGHT:

9000 LBS. (4082 KG.)

EXPORT CRATE SIZE:

734 CU. FT. (20,8 CU. M.)



**GORMAN-RUPP PUMPS**

www.grpumps.com

Specifications Subject to Change Without Notice

Printed in U.S.A.