



Priming Assisted Centrifugal Pump w/Autostart

Model PAH4B65-4045H

Size 6" x 4"



Total Head		Capacity of Pump in U.S. Gallons per Minute (GPM) at Continuous Performance			
P.S.I.	Feet				
101.9	235	400	400	400	N/A
97.5	225	640	640	640	N/A
86.7	200	920	1040	1040	N/A
75.9	175	960	1235	1420	760
65.0	150	960	1245	1550	1220
54.2	125	960	1247	1570	1580
43.4	100	960	1265	1570	1770
32.5	75	960	1265	1575	1830
21.7	50	960	1270	1580	1840
10.8	25	960	1280	1580	1845
Suction Lift		25'	20'	15'	±10'

‡Suction Lift Based On 1800 RPM Engine Speed.

PUMP SPECIFICATIONS

Size: 6" x 4" (152 mm x 102 mm) Flanged.

Casing: Stainless Steel CD4MCu.

Maximum Operating Pressure 159 psi (1096 kPa).*

Enclosed Type, Two Vane Impeller: Stainless Steel CD4MCu.

Handles 3" (76,2 mm) Diameter Spherical Solids.

Suction Head: Stainless Steel CD4MCu.

Suction Spool: Stainless Steel CD4MCu.

Impeller Shaft: Stainless Steel 17-4 PH..

Replaceable Wear Ring: Stainless Steel CD4MCu.

Bearing Pedestal: Gray Iron 30.

Seal Plate: Stainless Steel CD4MCu.

Seal: Mechanical, SAE 30 Non-Detergent Oil Lubricated. Silicon Carbide Rotating Face and Stationary Seat. Fluorocarbon Elastomers (DuPont Viton® or Equivalent). Stainless Steel 316 Cage and Stainless Steel 316 Spring. Maximum Temperature of Liquid Pumped 160° F (71° C).*

Shaft Sleeve: Stainless Steel 17-4 PH.

Priming Chamber: Stainless Steel 316 Housing w/Stainless Steel Float and Linkage.

Discharge Check Valve: Stainless Steel Housing w/Viton Flapper.

Radial Bearing: Open Roller.

Thrust Bearing: Open Double Ball.

Bearing Cavity Lubrication: Lithium EP2 Grease.

Gaskets: Fluorocarbon (DuPont Viton® or Equivalent), Compressed Synthetic Fibers and Buna-N.

O-Rings: Fluorocarbon (DuPont Viton® or Equivalent).

Hardware: Stainless Steel 316 and 17-4 PH.

Seal Cavity Oil Level Sight Gauges.

*Consult Factory for Applications Exceeding Maximum Pressure and/or Temperature Indicated.

Standard Equipment: Strainer. Gear-Driven Air Compressor. Hoisting Bail. Combination Skid Base w/Fuel Tank. Single Ball Type Float Switch.**

**50 Ft. (15 m) Standard Length; Dual Switches and Alternate Cable Lengths Available From the Factory.

Optional Equipment: Battery. NPT Threaded Flange Kit. Suction Vacuum and Discharge Pressure Gauge Kit. High Speed (55 MPH/89 KM/H) Tandem Axle Pneumatic-Tired Wheel Kit w/wo DOT Approved Lights and Electric Brakes. Tandem Axle Over-the-Road Trailer. Full Feature Control Panel For Use w/Submersible Transducer Liquid Level Sensor (50 Ft. [15 M] Cable Standard, Alternate Lengths Available).



ENGINE SPECIFICATIONS

Model: John Deere 4045H "Power Tech".

EPA Tier: Tier 3.

Type: Four Cylinder, Turbocharged, Charge Air Cooled, Enclosed, Liquid Cooled Diesel Engine.

Displacement: 275 Cu. In. (4,5 liters).

Lubrication: Forced Circulation.

Air Cleaner: Dry Type.

Fuel Tank: 88 U.S. Gals. (330 liters).

Full Load Operating Time: 17.9 Hrs.

Starter: 12V Electric.

Standard Features: Muffler w/Weather Cap.

Optional: Electronic Fuel Level Sensor.

Engine Control Features: Padlockable Box with Throttle Control, Tachometer, Coolant Temperature, Oil Pressure, Voltage and Overstart Indicators/Shutdowns. Manual/Stop/Auto Key-switch. Audible Startup Warning Delay. Fuel Level Display/Alarm/Shutdown (For Use With Optional Fuel Level Sensor).

JOHN DEERE PUBLISHED PERFORMANCE:

Maximum Gross BHP (Intermittent Duty)
140 (104 kW) @ 2400 RPM



GORMAN-RUPP PUMPS

www.grpumps.com

Specifications Subject to Change Without Notice

Printed in U.S.A.

Specification Data

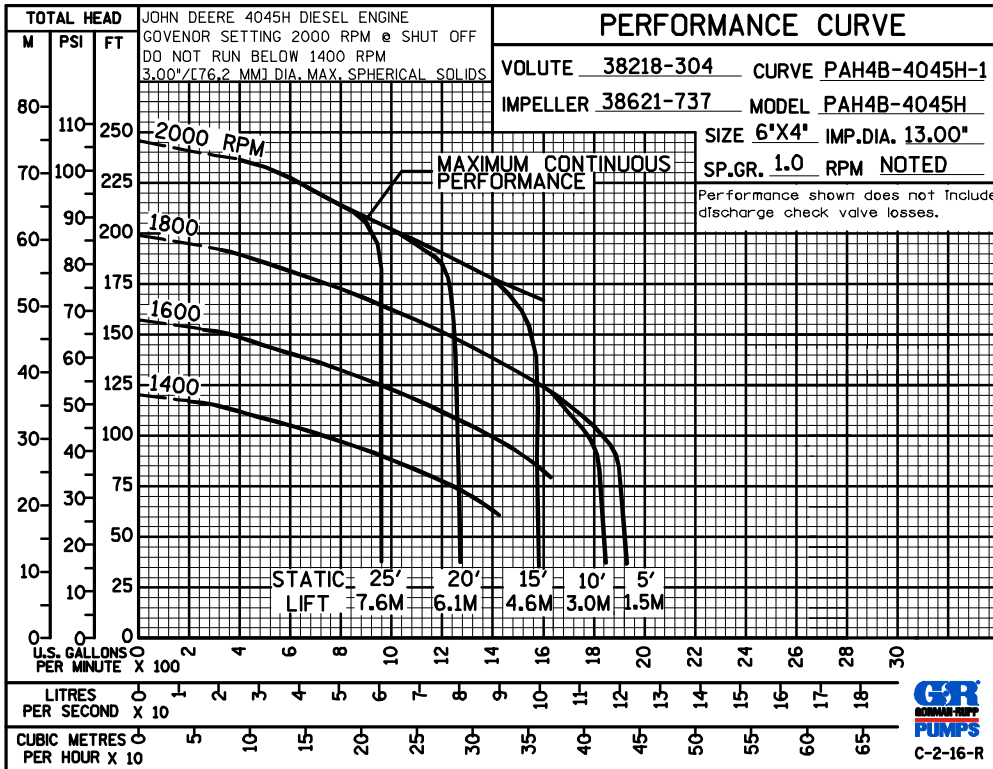
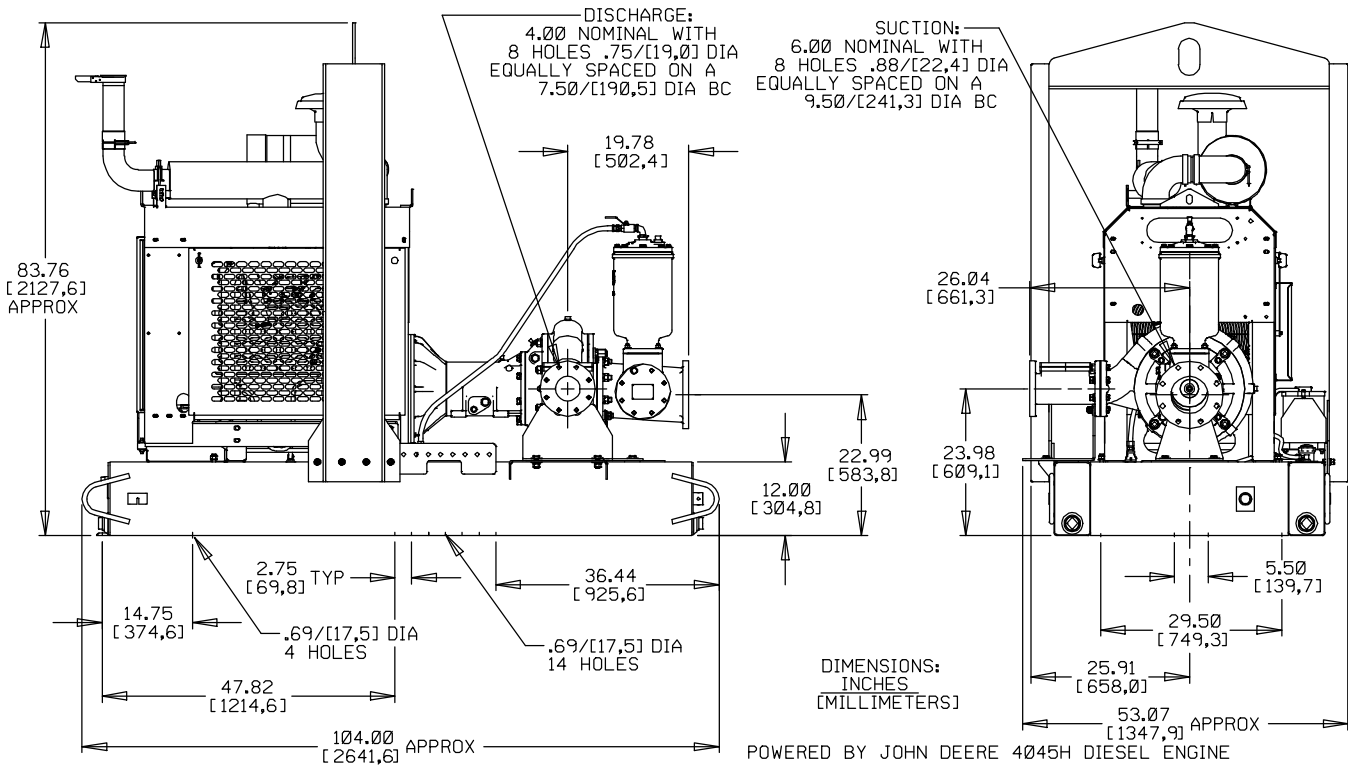
APPROXIMATE
DIMENSIONS and WEIGHTS

SKID BASE

2-WHEEL

NET WEIGHT: 3438 LBS. (1559 KG.) 3933 LBS. (1784 KG.)
SHIPPING WEIGHT: 3738 LBS. (1695 KG.) 3933 LBS. (1784 KG.)
EXPORT CRATE SIZE: 372 CU. FT. (11 CU. M.)

SECTION 43, PAGE 201



GORMAN-RUPP PUMPS

www.grpumps.com

Specifications Subject to Change Without Notice

Printed in U.S.A.