



# Priming Assisted Centrifugal Pump w/Autostart

## Model PAH8E60-6136H FT4 Size 10" x 8"



Total Head		Capacity of Pump in U.S. Gallons per Minute (GPM) at Continuous Performance			
P.S.I.	Feet				
184.2	425	N/A	1500	1500	1500
151.7	350	N/A	2610	3580	4240
130.0	300	N/A	2610	3600	4290
108.4	250	1720	2620	3600	4300
86.7	200	1810	2640	3600	4300
65.0	150	1820	2650	3600	4300
43.6	100	1830	2670	3600	4300
21.7	50	1850	2680	3600	4300
<b>Suction Lift</b>		<b>25'</b>	<b>20'</b>	<b>15'</b>	<b>10'</b>



### PUMP SPECIFICATIONS

**Size:** 10" x 8" (254 mm x 203 mm) Flanged.

**Casing:** Ductile Iron 65-45-12.

Maximum Operating Pressure 250 psi (1724 kPa).\*

**Enclosed Type, Five Vane Impeller:** Ductile Iron 80-55-06.

Handles 1 3/4" (44,5 mm) Diameter Spherical Solids.

**Suction Head:** Ductile Iron 65-45-12.

**Suction Spool:** Ductile Iron 65-45-12.

**Impeller Shaft:** Alloy Steel 4150M.

**Replaceable Wear Ring:** Ductile Iron 65-45-12.

**Bearing Pedestal:** Gray Iron 30.

**Seal Plate:** Ductile Iron 65-45-12.

**Seal:** Mechanical, SAE 30 Non-Detergent Oil-Lubricated. Silicon Carbide Rotating Face and Stationary Seat. Fluorocarbon Elastomers (DuPont Viton® or Equivalent). Stainless Steel 316 Cage and Stainless Steel 18-8 Spring. Maximum Temperature of Liquid Pumped 160°F (71°C).\*

**Shaft Sleeve:** Stainless Steel 303/304.

**Priming Chamber:** Gray Iron 30 Housing w/Stainless Steel Float and Linkage.

**Discharge Check Valve:** Ductile Iron Housing w/Buna-N Flapper.

**Radial Bearing:** Open Single Row Roller.

**Thrust Bearing:** Open Double Row Ball.

**Bearing Cavity Lubrication:** Lithium EP2 Grease.

**Gaskets:** Red Rubber, Buna-N, and Fluorocarbon (DuPont Viton® or Equivalent).

**O-Rings:** Buna-N.

**Hardware:** Standard Plated Steel.

**Seal Cavity Oil Level Sight Gauges.**

*\*Consult Factory for Applications Exceeding Maximum Pressure and/or Temperature Indicated.*

**Standard Equipment:** Gear-Driven Air Compressor. Hoisting Bail. Combination Skid Base w/Fuel Tank. **Full Feature Control Panel Single Ball Type Float Switch.\*\***

**Optional Equipment:** Battery, Heated Priming Chamber Kit. Suction Vacuum and Discharge Pressure Gauge Kit, Liquid Level Sensor, Threaded Flange Kit.

*\*\*50 Ft. (15 m) Standard Length; Dual Switches and Alternate Cable Lengths Available From the Factory.*



### ENGINE SPECIFICATIONS

**Model:** John Deere 6136CI440.

**EPA Tier:** Final Tier 4.

**Type:** Six Cylinder, Charge-Air Cooled Diesel Engine.

Enclosed. With Air Compressor

**Displacement:** 827 Cu. In. (13,6 liters).

**Lubrication:** Forced Circulation.

**Air Cleaner:** Dry Type.

**Fuel Tank:** 284 U.S. Gals. (1075 liters).

**Full Load Operating Time:** 10.6 Hrs.

**Starter:** 12V Electric.

**Standard Features:** Muffler w/Guard and Weather Cap, DOC, DPF & SCR Exhaust After-Treatment System.

**Engine Control Features:** Padlockable Box with Throttle Control, Tachometer, Coolant Temperature, Oil Pressure, Voltage and Overstart Indicators/Shutdowns. Manual/Stop/Auto Keyswitch. Audible Startup Warning Delay. Fuel Level Display/Alarm/Shutdown. Electronic Fuel Level Sensor.

### JOHN DEERE PUBLISHED PERFORMANCE:

Maximum Gross BHP (Intermittent)  
585 (436 kW) @ 2100 RPM



GORMAN-RUPP PUMPS

www.grpumps.com

Specifications Subject to Change Without Notice

Printed in U.S.A.

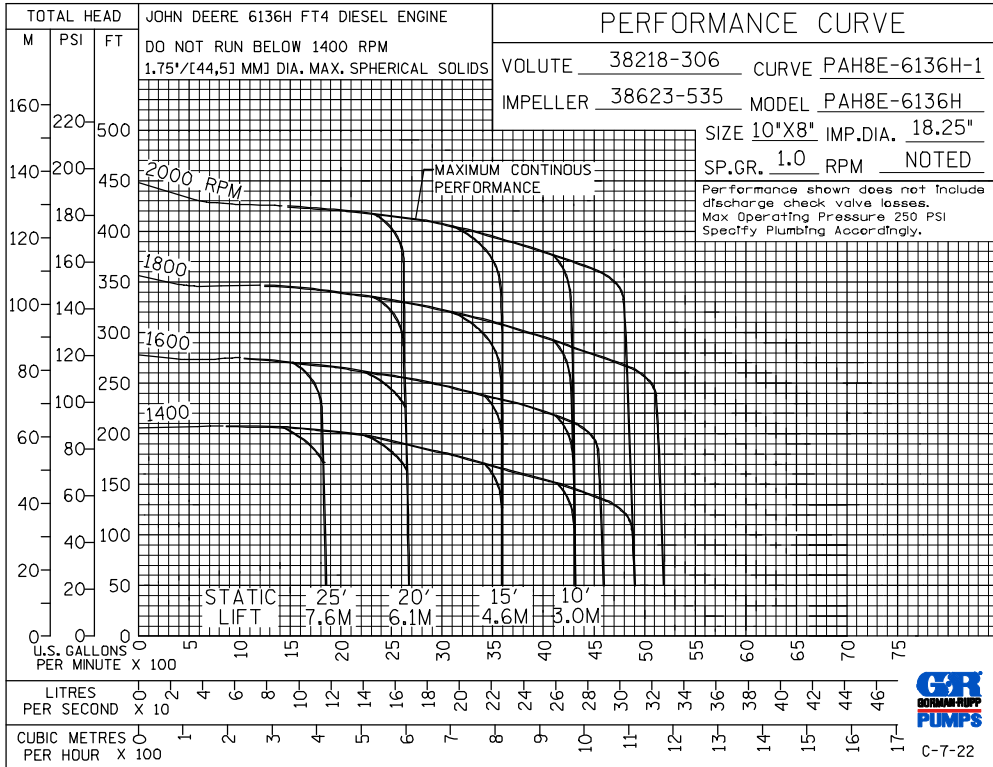
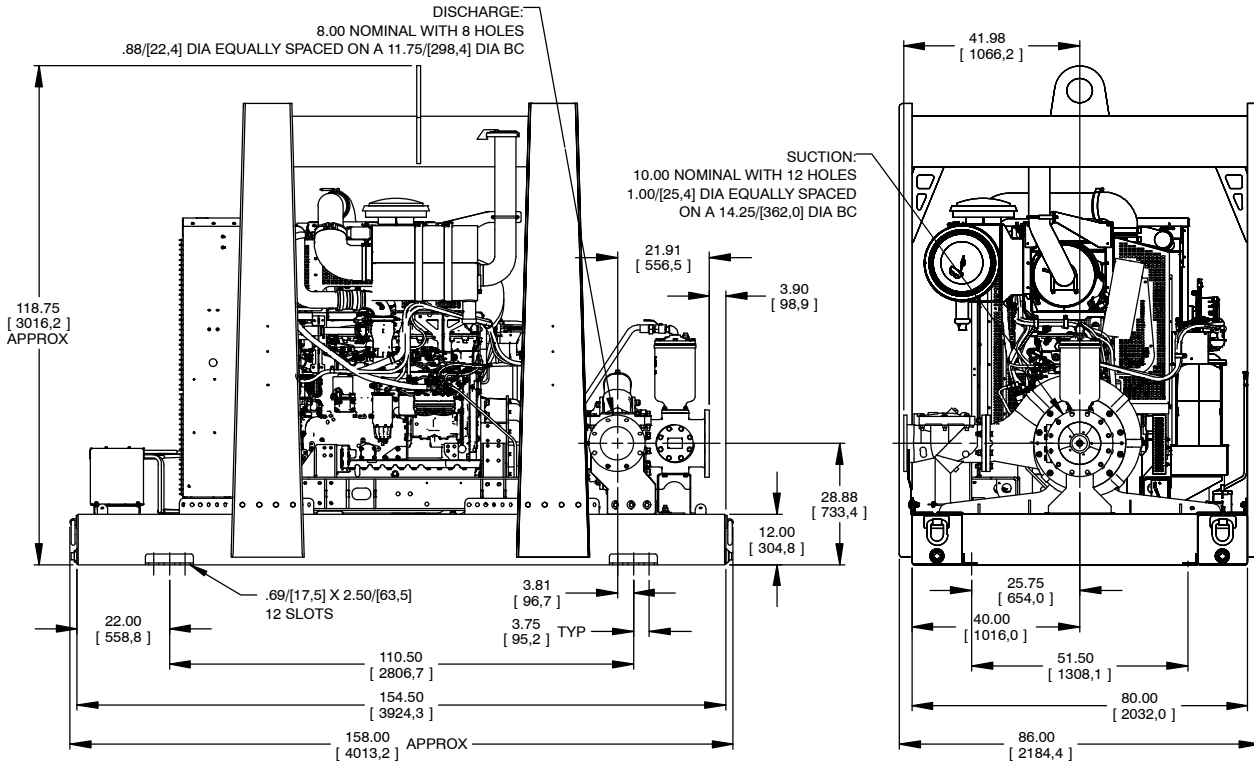
**Specification Data**

**SECTION 43, PAGE 445**

APPROXIMATE  
DIMENSIONS and WEIGHTS

**NET WEIGHT:**  
**SHIPPING WEIGHT:**  
**EXPORT CRATE SIZE:**

**8500 LBS. [3856 KG.]**  
**8640 LBS. [3919 KG.]**  
**1021 CU. FT. (28,9 CU. M.)**



**GORMAN-RUPP PUMPS**

www.grpumps.com

Specifications Subject to Change Without Notice

Printed in U.S.A.