

Diesel Engine Driven Self Priming Centrifugal Pump w/Autostart Model V3A60-D914L3 Size 4" x 3"

A C D S



VARIOUS PATENTS APPLY



18 MT

Total Head		Capacity of Pump in U.S. Gallons per Minute (GPM) at Continuous Performance			
P.S.I.	Feet				
53.8	124	180	180	180	180
52.0	120	240	240	240	240
43.4	100	313	425	560	560
34.7	80	359	462	600	638
26.0	60	368	480	612	702
17.3	40	368	489	620	710
8.7	20	368	500	625	715
Suction Lift		25'	20'	15'	10'

Photo not available at time of publishing

PUMP SPECIFICATIONS

Size: 4" (102 mm) NPT Suction x 3" (76 mm) Flanged Discharge.

Casing: Gray Iron 30.

Maximum Operating Pressure 94 psi (648 kPa).*

Semi-Open Type, Two Vane Impeller: Ductile Iron 65-45-12.

Handles 2-1/2" (63,5 mm) Diameter Spherical Solids.

Impeller Shaft: Stainless Steel 17-4PH.

Self-Cleaning Replaceable Wear Plate: Carbon Steel 1015.

Shimless Adjustable Cover Plate: Gray Iron 30.

Removable Inspection Cover Plate: Gray Iron 30; 12 lbs. (5,4 kg.).

Externally Removable Flap Valve: Neoprene w/Nylon and Steel Reinforcing.

Suction Flange/Flap Valve Seat: Gray Iron 30.

Bearing Housing: Gray Iron 30.

Seal: Cartridge Type, Mechanical, Oil-Lubricated, Double Floating, Self-Aligning. Silicon Carbide Rotating and Stationary Faces. Stainless Steel 304 Stationary Seat. Fluorocarbon Elastomers (DuPont Viton® or Equivalent). Stainless Steel 18-8 Cage and Spring. Maximum Temperature of Liquid Pumped, 160°F (71°C).*

Seal Plate: Gray Iron 30.

Shaft Sleeve: Stainless Steel 17-4PH.

Radial Bearing: Open Single Row Ball.

Thrust Bearing: Open Double Row Ball.

Bearing and Seal Cavity Lubrication: SAE 30 Non-Detergent Oil.

Gaskets: Buna-N, Compressed Synthetic Fibers, Vegetable Fiber, PTFE, Cork, and Rubber.

O-Rings: Buna-N.

Hardware: Standard Plated Steel.

Brass Pressure Relief Valve.

Bearing and Seal Cavity Oil Level Sight Gauges.

* Consult Factory for Applications Exceeding Maximum Pressure and/or Temperature Indicated.

Standard Equipment: Hoisting Bail. Combination Skid Base w/Fuel Tank. Strainer. Single Ball Type Float Switch.**

Optional Equipment: Gray Iron Flange Kits:

3" and 4" Female NPT or ASA Suction/Discharge Flange Kits.
100 mm and 80 mm PN 16 Suction/Discharge Spool Flange Kits.
Stainless Steel/G-R Hard Iron Impeller, Seal Plate and Wear Plate. Battery. High Speed (55 MPH/89 KM/H) Single Axle Pneumatic-Tired Wheel Kit w/wo DOT-Approved Lights and Electric Brakes. Over-the-Road Trailer (Meets DOT Requirements) Available w/Either Electric or Hydraulic Surge Brakes, Running Lights, Jack Stands and Safety Cables. EPS w/Submersible Transducer Liquid Level Sensor (50 Ft. [15M] Cable Standard, Alternate Lengths Available).

**50 Ft. (15 m) Standard Length; Dual Switches and Alternate Cable Lengths Available From the Factory.

WARNING!

Do not use in explosive atmosphere or for pumping volatile flammable liquids.

ENGINE SPECIFICATIONS

Model: Deutz D914L3.

Type: Three Cylinder, Four Cycle, Air Cooled Diesel Engine.

Displacement: 197.4 Cu. In. (3,24 Liters).

Governor: Mechanical.

Lubrication: Forced Circulation.

Air Cleaner: Oil Bath.

Oil Reservoir: 11.6 U.S. Qts (11 Liters) Dry
9.5 U.S. Qts (9 Liters) Refill.

Fuel Tank: 61 U.S. Gallons (231 Liters).

Full Load Operating Time: 36.9 Hrs.

Starter: 12 Volt Electric.

Standard Features: High Oil Temperature, Low Oil Pressure, V-Belt, Alternator and Start Failure Safety Shut Down Switches/Indicators. Fuel Level Gauge. Throttle Control. Autostart Instrument Panel with: Temperature Gauge, Oil Pressure Gauge, Ammeter, Hourmeter, Tachometer, Manual/Stop/Auto Key Switch, 15 Amp Fuse, Audible Startup Warning Delay. Muffler w/Guard and Weather Cap.

DEUTZ PUBLISHED PERFORMANCE:

Maximum Gross Continuous B.H.P.

54.9 (41 kW) @ 2300 RPM



THE GORMAN-RUPP COMPANY • MANSFIELD, OHIO

GORMAN-RUPP OF CANADA LIMITED • ST. THOMAS, ONTARIO, CANADA

www.grpumps.com

Specifications Subject to Change Without Notice

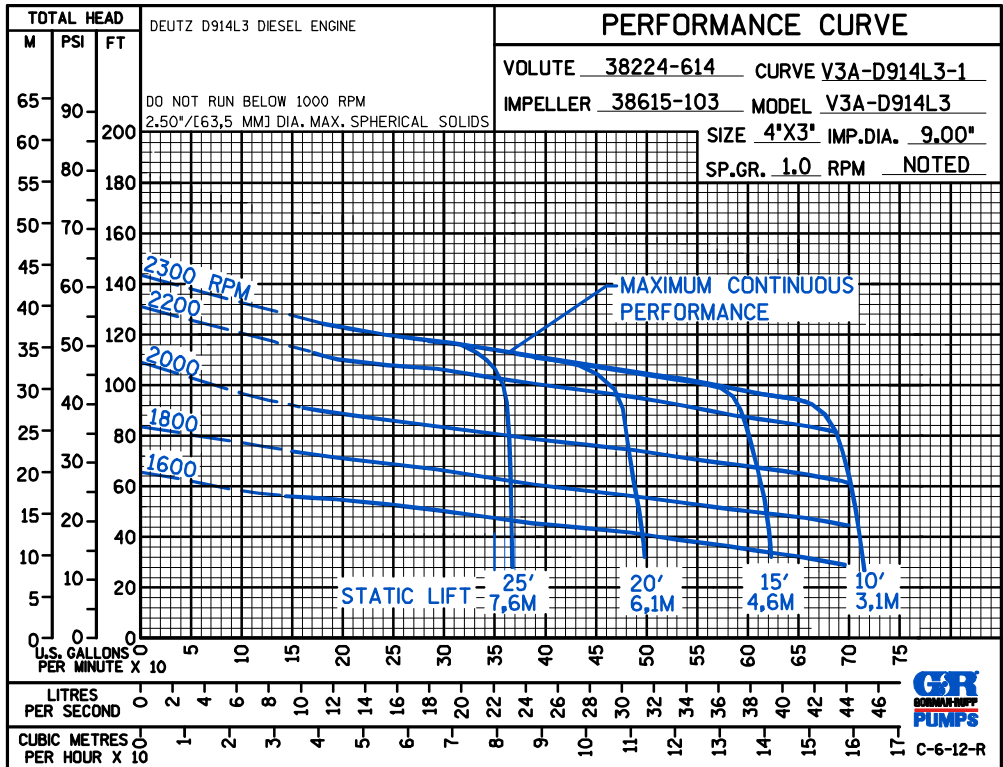
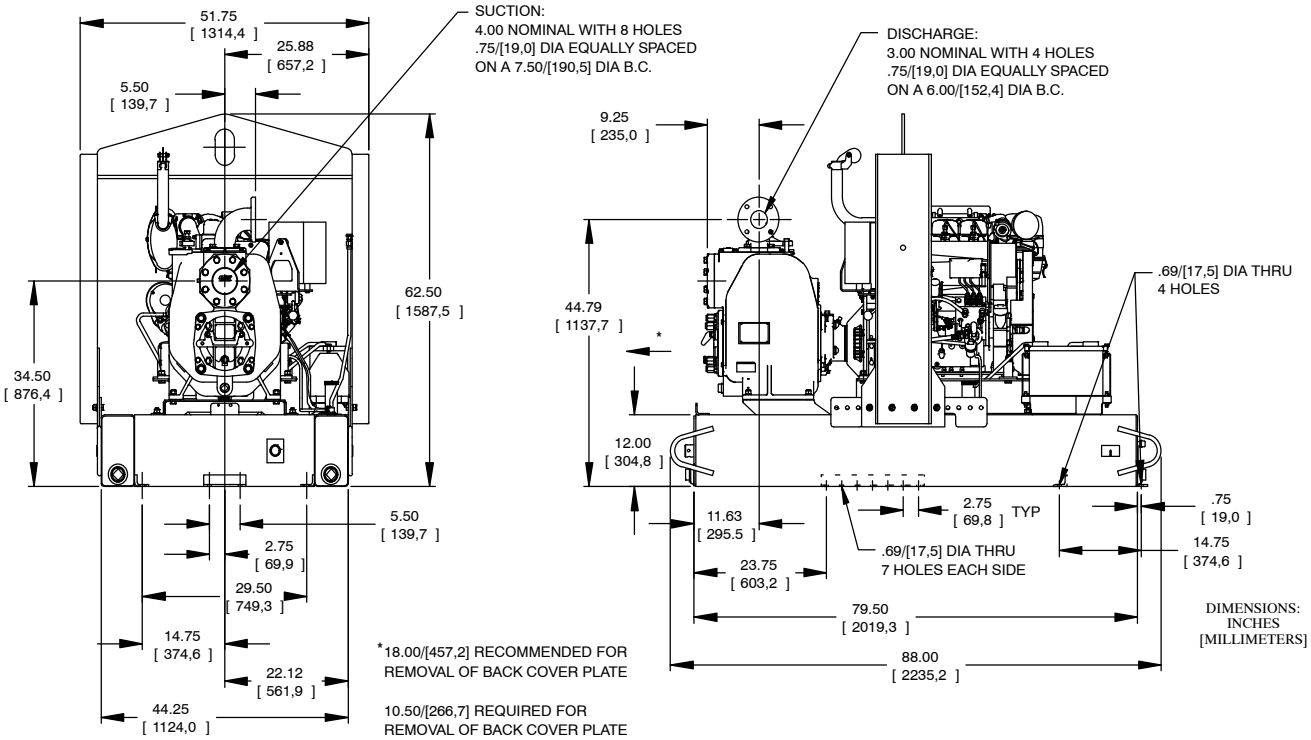
Printed in U.S.A.

Specification Data

SECTION 45, PAGE 825

APPROXIMATE DIMENSIONS and WEIGHTS

	SKID BASE	2-WHEEL
NET WEIGHT:	2079 LBS. (943 KG.)	2684 LBS. (1217 KG.)
SHIPPING WEIGHT:	2279 LBS. (1033,7 KG.)	2684 LBS. (1217 KG.)
EXPORT CRATE SIZE:	215.2 CU. FT. (6,1 CU. M.)	



THE GORMAN-RUPP COMPANY • MANSFIELD, OHIO

GORMAN-RUPP OF CANADA LIMITED • ST. THOMAS, ONTARIO, CANADA

Specifications Subject to Change Without Notice

Printed in U.S.A.