



Super T SERIES
VARIOUS PATENTS APPLY

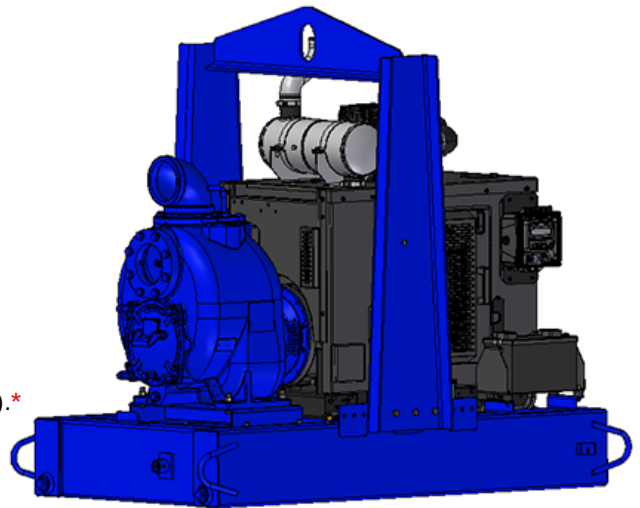
Self Priming Centrifugal Pump w/Autostart

Model T6A60S-QSF2.8P FT4
Size 6" x 6"



70 MT

Total Head		Capacity of Pump in U.S. Gallons per Minute (GPM) at Continuous Performance				
P.S.I.	Feet					
59.8	138	400	400	400	400	400
52.0	120	720	760	760	760	760
43.4	100	750	1045	1180	1180	1180
34.7	80	760	1060	1290	1460	1490
26.0	60	770	1070	1300	1495	1620
17.4	40	780	1080	1310	1510	1640
Suction Lift		25'	20'	15'	10'	5'



PUMP SPECIFICATIONS

Size: 6" x 6" (152 mm x 152 mm) NPT - Female.
Casing: Gray Iron 30. Maximum Operating Pressure 99 psi (683 kPa).*
Semi-Open Type, Two Vane Impeller: Ductile Iron 65-45-12.
 Handles 3" (76,2 mm) Diameter Spherical Solids.
Impeller Shaft: Stainless Steel 17-4 PH.
Replaceable Wear Plate: Carbon Steel ASTM A36.
Removable Adjustable Cover Plate: Gray Iron 30; 60.5 lbs. (27 kg).
Flap Valve: Neoprene w/Steel Reinforcement.
Seal Plate: Gray Iron 30.
Seal: Cartridge Type, Mechanical, Oil-Lubricated, Double Floating, Self-Aligning. Silicon Carbide Rotating and Stationary Faces. Stainless Steel 316 Stationary Seat, Cage and Spring. Fluorocarbon Elastomers (DuPont VitonR or Equivalent). Maximum Temperature of Liquid Pumped 160°F (71°C).*
Shaft Sleeve: Alloy Steel 4130.
Bearing Housing: Gray Iron 30.
Radial Bearing: Open Single Row Ball.
Thrust Bearing: Open Double Row Ball.
Bearing and Seal Cavity Lubrication: SAE 30 Non-Detergent Oil.
Flanges: Gray Iron 30.
Gaskets: Buna-N, Compressed Synthetic Fibers, PTFE, Vegetable Fiber, Cork, and Rubber.
O-Rings: Buna-N.
Hardware: Standard Plated Steel.
Brass Pressure Relief Valve.
Bearing and Seal Cavity Oil Level Sight Gauges.
Standard Equipment: Combination Skid Base w/Fuel Tank. Hoisting Bail. 90° Discharge Elbow. Strainer. Single Ball Type Float Switch.**
****50 Ft. (15 m) Standard Length; Dual Switches and Alternate Cable Lengths Available From the Factory.**
Optional Equipment: Battery. G-R Hard Iron Impeller, Seal Plate and Wear Plate. High Speed (55 MPH/89 KM/H) Single Axle Pneumatic-Tired Wheel Kit w/w DOT-Approved Lights and Electric Brakes. Tandem Axle Over-the-Road Trailer. Full Feature Control Panel For Use w/Submersible Transducer Liquid Level Sensor (50 Ft. [15 M] Cable Standard, Alternate Lengths Available).
**Consult Factory for Applications Exceeding Maximum Pressure and/or Temperature Indicated.*

WARNING!
Do not use in explosive atmosphere or for pumping volatile flammable liquids.

ENGINE SPECIFICATIONS

Model: Cummins QSF2.8.
EPA Tier: Final Tier 4.
Type: Four Cylinder, Four Cycle, Turbocharged, Charge Air Cooled, Liquid Cooled Diesel Engine.
Displacement: 173 Cu. In. (2,8 Liters).
Lubrication: Forced Circulation.
Air Cleaner: Dry Type.
Fuel Tank: 61 U.S. Gals. (231 Liters).
Full Load Operating Time: 22.2 Hrs.
Starter: 12V Electric.
Standard Features: Muffler w/Weather Cap.
Optional: Electronic Fuel Level Sensor.
Engine Control Features: Padlockable Box with Throttle Control, Tachometer, Coolant Temperature, Oil Pressure, Voltage and Overstart Indicators/Shutdowns. Manual/Stop/Auto Keyswitch. Audible Startup Warning Delay. Fuel Level Display/Alarm/Shutdown (For Use With Optional Fuel Level Sensor).

CUMMINS PUBLISHED PERFORMANCE:
Maximum Gross Continuous BHP
74 (55 kW) @ 2500 RPM



GORMAN-RUPP PUMPS

www.grpumps.com

Specifications Subject to Change Without Notice

Printed in U.S.A.

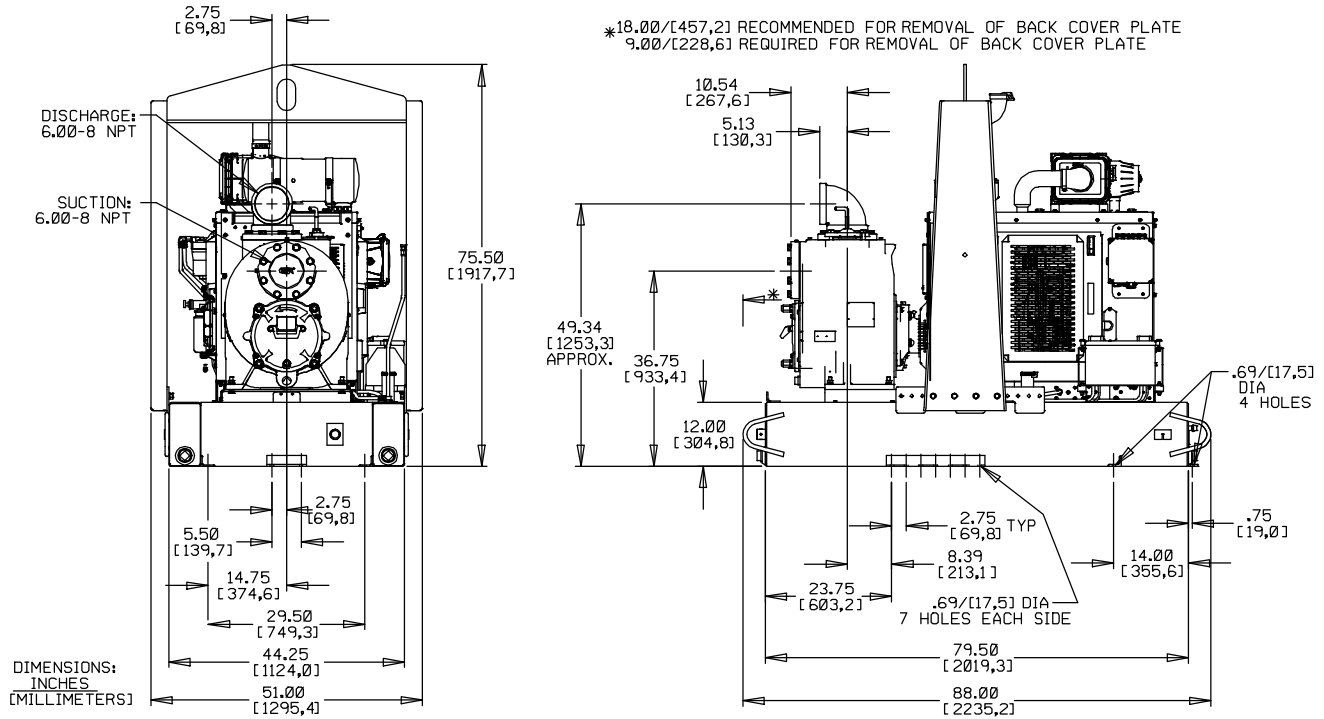
Specification Data

Sec. 45, Page 1600

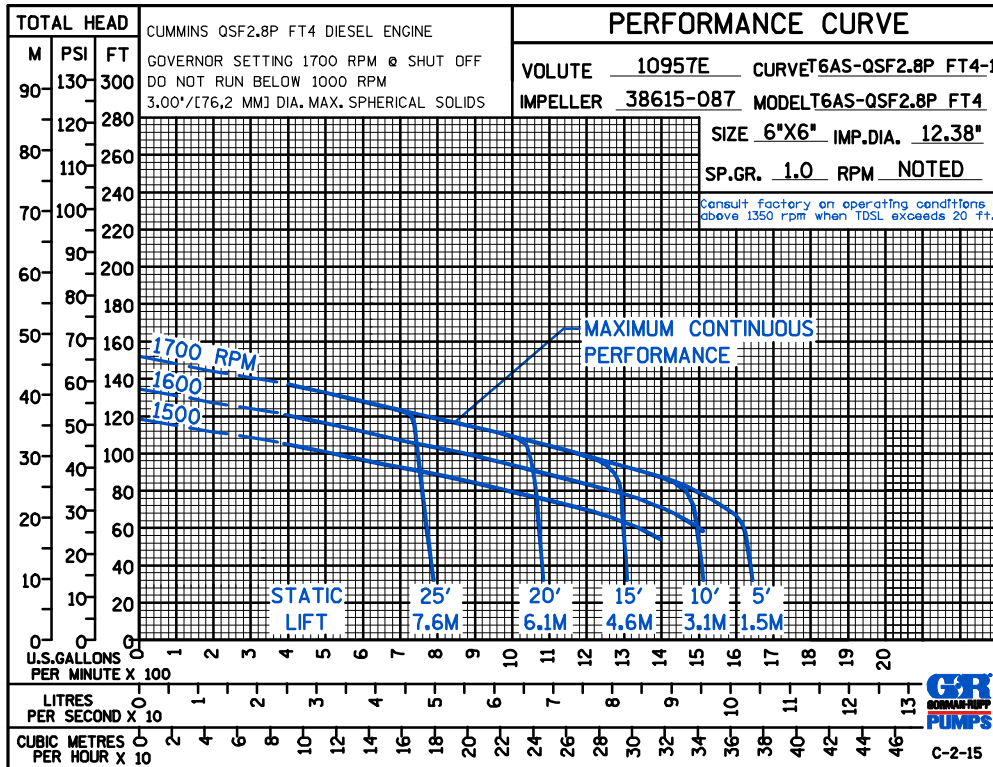
APPROXIMATE DIMENSIONS and WEIGHTS

SKID BASE 2-WHEEL

NET WEIGHT: 3101 LBS. (1406 KG.) 3601 LBS. (1633 KG.)
 SHIPPING WEIGHT: 3501 LBS. (1588 KG.) 3601 LBS. (1633 KG.)
 EXPORT CRATE SIZE: 252 CU. FT. (7,2 CU. M.)



POWERED BY: CUMMINS 2.8L QSF2.8P DIESEL ENGINE



GORMAN-RUPP PUMPS

www.grpumps.com

Specifications Subject to Change Without Notice

Printed in U.S.A.