

# Self Priming Centrifugal Pump



Model 81 1/4B3-E.33 1P

Size 1 1/4" x 1 1/4"



## PUMP SPECIFICATIONS

**Size:** 1 1/4" x 1 1/4" (31,8 mm x 31,8 mm) NPT - Female.

**Casing:** Gray Iron 30.

Maximum Operating Pressure 26 psi (179 kPa).\*

**Semi-Open Type, Five Vane Impeller:** Copper Alloy C83600.

Handles 5/16" (7,9 mm) Diameter Spherical Solids.

**Impeller Shaft:** Stainless Steel 416 (Provided with Motor).

**Suction Head:** Gray Iron 30.

**Suction Flange:** Gray Iron 30.

**Flap Valve:** Brass; Buna-N.

**Gaskets:** Cork.

**Float Switch.**

**Strainer.**

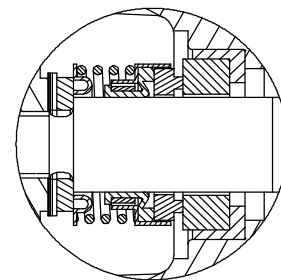
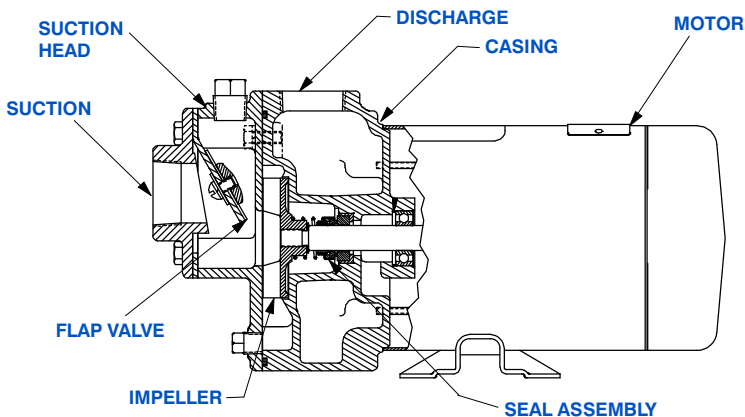
**8 Ft. (2,4 M) Electric Power Cord.**

**Optional Equipment:** Consult Factory.



## MOTOR SPECIFICATIONS

Type	Description	Frame Size	Hertz	Horse power	Service Factor	RPM	Voltage
E	Single Phase. Open Drip Proof. Capacitor Start. Auto Reset Thermostat. Self-Lubricated, Shielded Ball, Radial/Thrust Bearings.	56Y	60	0.33	1.0	3450	115/230



### SEAL DETAIL

Type 21, Mechanical, Self-Lubricated. Carbon Rotating Face. Ni-Resist Stationary Face. Fluorocarbon Elastomers (DuPont Viton® or Equivalent). Stainless Steel 18-8 Cage and Spring. Maximum Temperature of Liquid Pumped, 160°F (71°C).\*

\*Consult Factory for Applications Exceeding Maximum Pressure and/or Temperature Indicated.



GORMAN-RUPP PUMPS

www.grpumps.com

Specifications Subject to Change Without Notice

Printed in U.S.A.

**Specification Data**

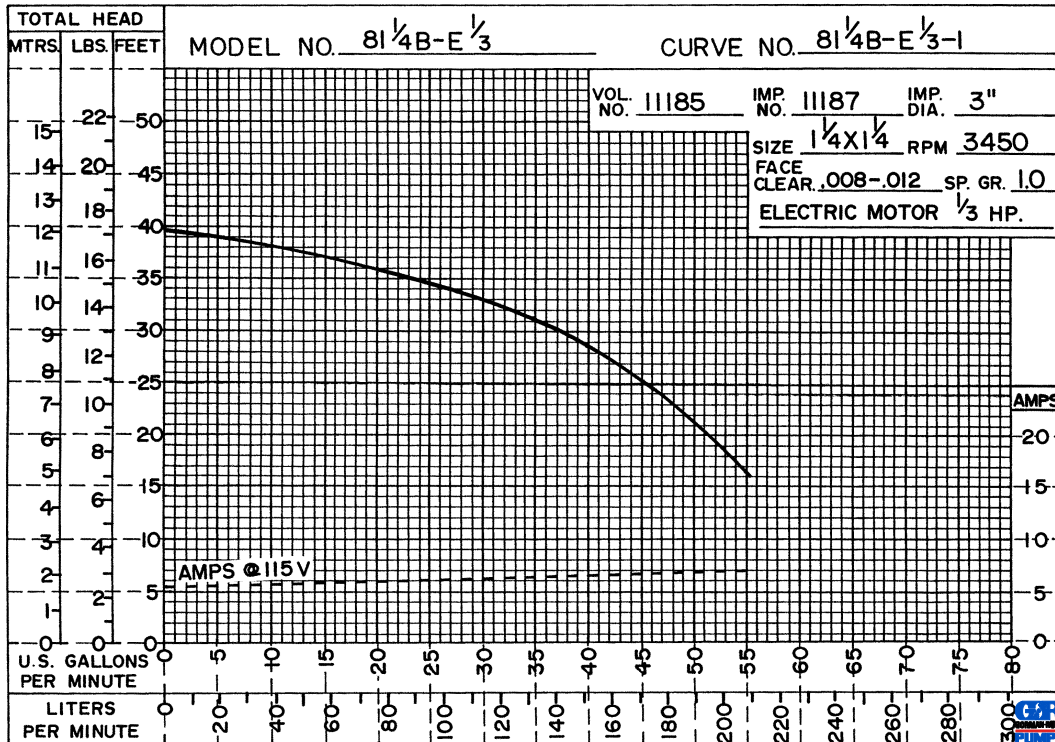
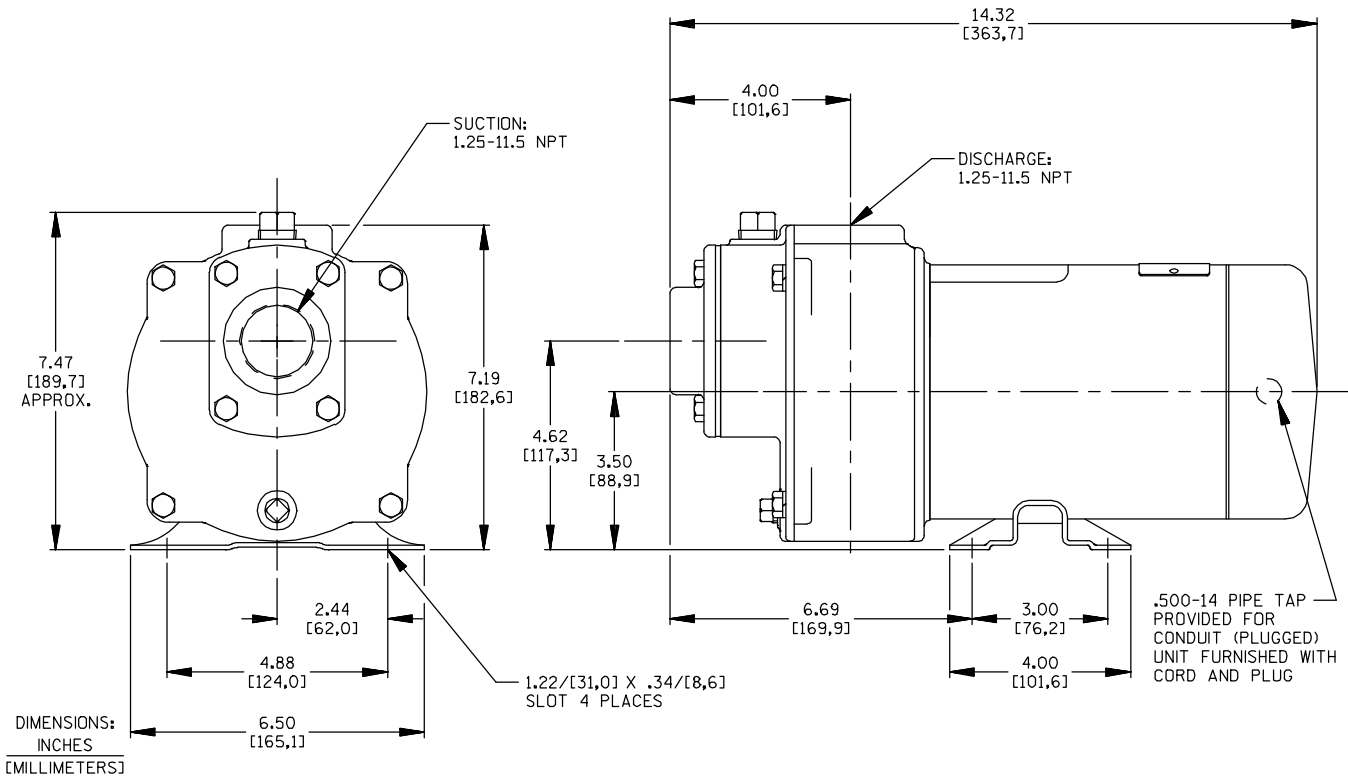
SECTION 50, PAGE 450

APPROXIMATE  
DIMENSIONS and WEIGHTS

NET WEIGHT (w/o Float Switch): 34 LBS. (15,4 KG.)

SHIPPING WEIGHT: 42 LBS.(19,1 KG.)

EXPORT CRATE: 1.1 CU. FT. (0,03 CU. M.)



60 HERTZ  
Performance  
Based on  
Water

T-11-18-76-REV.



**GORMAN-RUPP PUMPS**

www.grpumps.com

Specifications Subject to Change Without Notice

Printed in U.S.A.