

# Self Priming Centrifugal Pump

Models 81 1/2P47A-E2 1P  
and 81 1/2P47A-E2 3P

Size 1 1/2" x 1 1/2"



**PUMP SPECIFICATIONS**

**Size:** 1 1/2" x 1 1/2" (38 mm x 38 mm) NPT - Female.

**Casing:** Polypropylene.

Maximum Operating Pressure 40 psi (276 kPa).\*

**Semi-Open Type, Four Vane Impeller:** Polypropylene.

Handles 9/16" (14,2 mm) Diameter Spherical Solids.

**Impeller Shaft:** Stainless Steel 416.

**Replaceable Vane Plate:** Polypropylene.

**Replaceable Flow Guide:** Polypropylene.

**Intermediate:** Polypropylene.

**O-Rings:** Buna-N.

**Hardware:** Stainless Steel 18-8.

**Strainer.**

**Optional Equipment:**

Consult Factory for Additional Options.

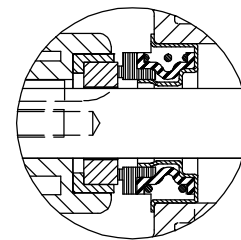
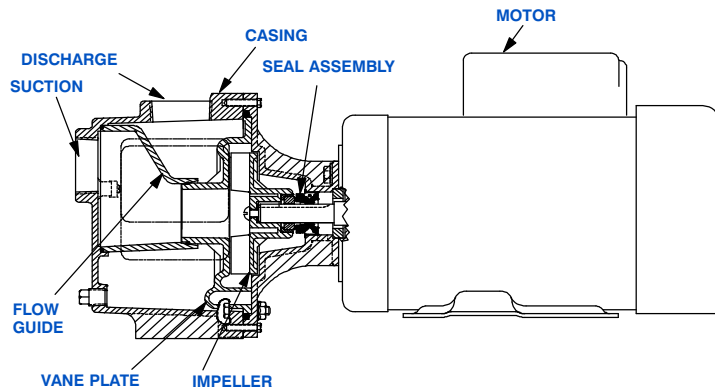
*\*Consult Factory for Applications Exceeding  
Maximum Pressure and/or Temperature Indicated.*



**WARNING!**  
Do not use in explosive atmosphere or for pumping volatile flammable liquids.

**MOTOR SPECIFICATIONS**

Type	Description	Frame Size	Hertz	Service Factor	Horsepower	RPM	Voltage
E	Single Phase. Totally Enclosed; Fan Cooled. Capacity Start/Induction Run. Thermal Overload Protection.	56C	60	1.0	2.0	3600	115/230
E	Three Phase. Totally Enclosed; Fan Cooled. Induction Start/Induction Run.						230/460



**SEAL DETAIL** Type 6A, Mechanical, Self-Lubricated. Ceramic Rotating Face. Carbon Stationary Face. Fluorocarbon Elastomers (DuPont Viton® or Equivalent). Stainless Steel 18-8 Cage and Spring. Maximum Temperature of Liquid Pumped 160°F (71°C).\*



GORMAN-RUPP PUMPS

www.grpumps.com

Specifications Subject to Change Without Notice

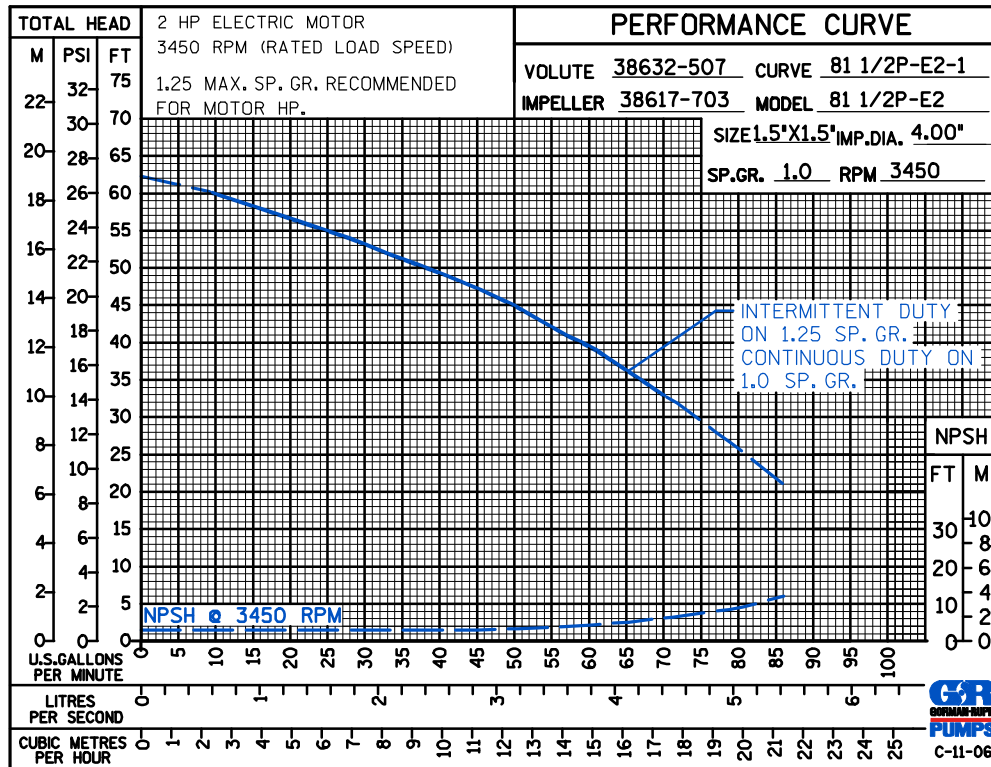
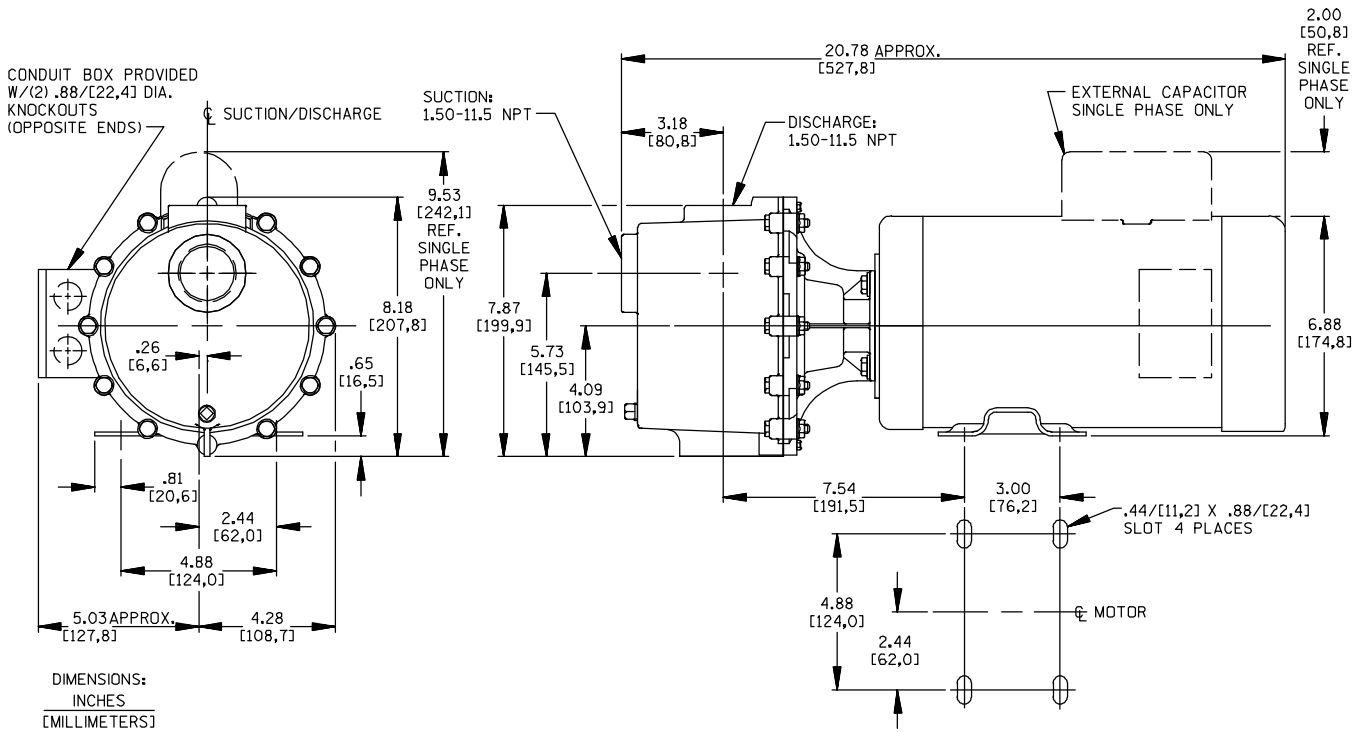
Printed in U.S.A.

**Specification Data**

**SECTION 50, PAGE 725**

APPROXIMATE  
DIMENSIONS and WEIGHTS

**NET WEIGHT: 45 LBS. (20 KG.)**  
**SHIPPING WEIGHT: 50 LBS. (22 KG.)**  
**EXPORT CRATE: 3.5 CU. FT. (0,10 CU. M.)**



**GORMAN-RUPP PUMPS**

www.grpumps.com

Specifications Subject to Change Without Notice

Printed in U.S.A.