



# Self Priming Centrifugal Pump

## Model 112A20-B

### Size 12" x 12"

#### PUMP SPECIFICATIONS

**Size:** 12" x 12" (305 mm x 305 mm) Flanged.

**Casing:** Gray Iron 30.

Maximum Operating Pressure: 63 psi (434 kPa).\*

**Enclosed Type Four Vane Impeller w/Wear Ring:** Ductile Iron 80-60-03. Handles 1 7/8" (47 mm) Diameter Spherical Solids.

**Impeller Shaft:** Stainless Steel 17-4 PH.

**Suction Plate:** Ductile Iron 80-60-03.

**Replaceable/Adjustable Wear Ring:** Ductile Iron 80-60-03.

**Removable Cover Plate:** Gray Iron 30; 3 Lbs. (1,4 kg).

**Pedestal:** Gray Iron 30.

**Seal Plate:** Gray Iron 30.

**Flap Valve Seat:** Carbon Steel.

**Flap Valve:** Neoprene w/Steel Reinforcing.

**Flap Valve Flange:** Gray Iron 30.

**Radial Bearing:** Single Row Ball.

**Thrust Bearing:** Double Row Ball.

**Bearing Lubrication:** SAE 30 Non-Detergent Oil.

**Gaskets:** Vegetable Fiber and Cork w/Nitrile Binder.

**O-Rings:** Buna-N.

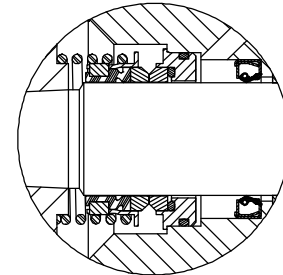
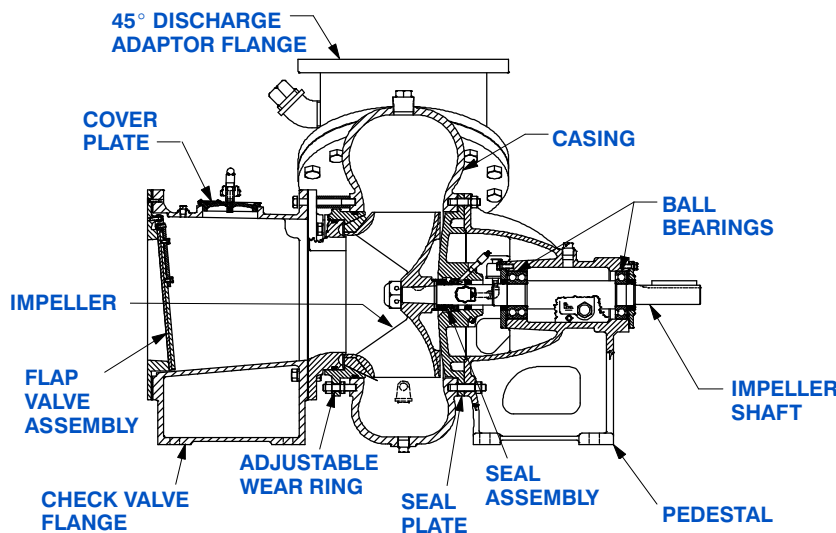
**Hardware:** Standard Plated Steel.

**Standard Equipment:** Oil Level Sight Gauge.

45° Discharge Elbow. Strainer.

**Optional Equipment:** 90° Discharge Elbow. Casing Heater. High Pump Temperature Shutdown. 45° Suction Flange.

\*Consult Factory for Applications Exceeding Maximum Pressure and/or Temperature Indicated.



#### SEAL DETAIL

Type 2, Mechanical. Oil-Lubricated. Double Floating, Self-Aligning. Tungsten Titanium Carbide Rotating and Stationary Faces. Stainless Steel 316 Stationary Seat. Fluorocarbon Elastomers (DuPont Viton® or Equivalent). Stainless Steel 18-8 Cage and Spring. Maximum Temperature Pumped is 160°F (71°C).\*



GORMAN-RUPP PUMPS

www.grpumps.com

Specifications Subject to Change Without Notice

Printed in U.S.A.

## Specification Data

SECTION 50, PAGE 2400

APPROXIMATE  
DIMENSIONS and WEIGHTS

**PUMP NET WEIGHT: 1250 LBS. (567 KG.)**  
**SHIPPING NET WEIGHT: 1552 LBS. (704 KG.)**  
**EXPORT CRATE SIZE: 55.1 CU. FT. (1.72 CU. M.)**

### -SUCTION LINE NOTE-

FOR SELF PRIMING APPLICATION, AVOID HORIZONTAL SUCTION LINES. IF USED, MAXIMUM ACCEPTABLE RUN IS 72.00 [1828,8]. PREFERRED INSTALLATION WOULD ANGLE SUCTION LINE DOWNWARD WITH 45° ELBOW AS SHOWN. LONG HORIZONTAL SUCTION LINES REDUCE EFFICIENCY BY CREATING INCREASED PRIMING TIME, INCREASED OPERATIONAL TIME IN A PARTIAL PRIME CONDITION, SURGING, AND DECREASED SHAFT AND BEARING LIFE.

### NOTE:

PUMP DISCHARGE ELBOW MUST BE IN VERTICAL POSITION, AS SHOWN, FOR SELF PRIMING APPLICATION.

### SUCTION:

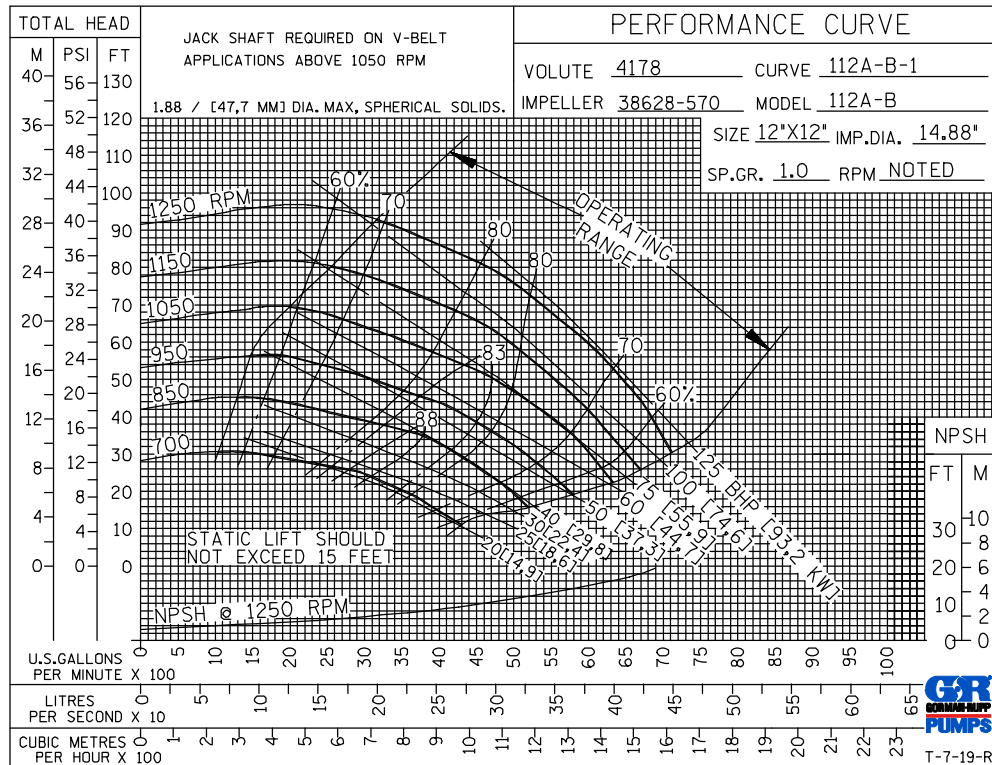
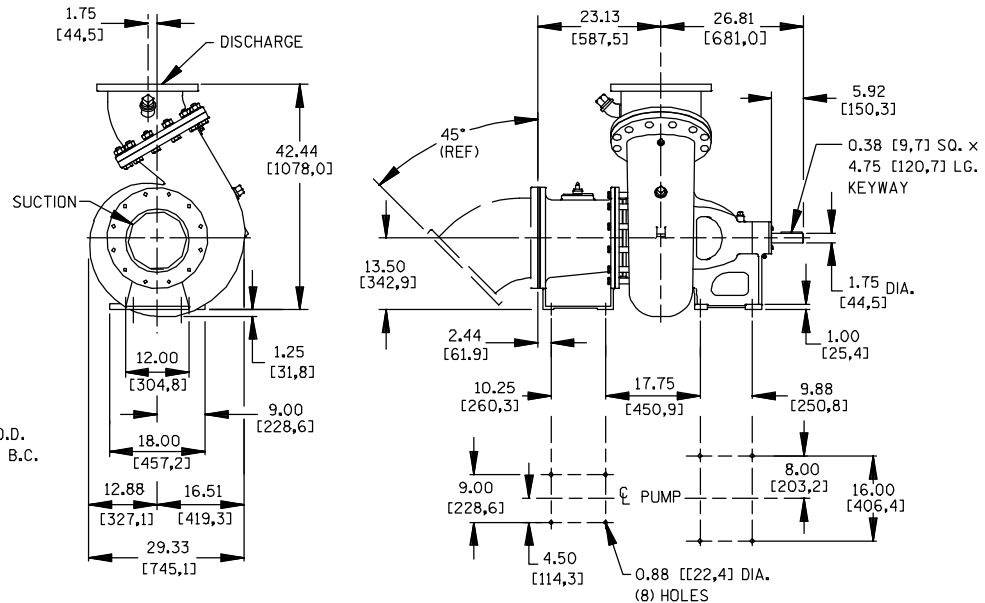
BOTTOM 1.00/[25,4] DIA.  
 (6) HOLES DRILLED THRU.  
 TOP .875-9 UNC-2B (6)  
 PLACES TAPPED TO DEPTH  
 AS FOLLOWS:  
 (2)-HOLES LOCATED 45° FROM  
 CENTER ARE TAPPED 1.31 [33,3]  
 DEEP. REMAINING (4) HOLES  
 TAPPED THRU. ALL HOLES  
 LOCATED ON A 17.00/[431,8]  
 DIA. B.C.

### DISCHARGE:

FLANGE 12.00 [304,8] I.D. x 19.00 [482,6] O.D.  
 (12) 1.00 [25,4] DIA. HOLES ON 17.00 [431,8] B.C.

### DIMENSIONS:

INCHES  
 [MILLIMETERS]



**MULTI-SPEED  
 CURVE  
 PERFORMANCE  
 BASED ON  
 WATER**



## GORMAN-RUPP PUMPS

www.grpumps.com

Specifications Subject to Change Without Notice

Printed in U.S.A.