



Self Priming Centrifugal Pump

Model 112C60-B

Size 12" x 10"

PUMP SPECIFICATIONS

Size: 12" x 10" (305 mm x 254 mm) Flanged.

Casing: Gray Iron 30.

Maximum Operating Pressure 99 psi (683 kPa).*

Semi-Open Type, Four Vane Impeller: Ductile Iron 80-60-03.

Handles 2-3/4" (69,9 mm) Diameter Spherical Solids.

Impeller Shaft: Alloy Steel 4150.

Replaceable Wear Plate: Ductile Iron 80-60-03.

Removable Clean-Out Cover Plate: Gray Iron 30; 3 lbs. (1,4 kg).

Bearing Housing: Gray Iron 30.

Intermediate Bracket: Gray Iron 30.

Suction Head: Gray Iron 30.

Pedestal Body: Gray Iron 30.

Seal Plate: Gray Iron 30.

Shaft Sleeve: Stainless Steel 304.

Flap Valve: Neoprene ^W/Steel Reinforcement.

Flap Valve Seat: Gray Iron 30.

Radial Bearing: Open Single Row Ball.

Thrust Bearings: Two, Open Single Row Ball.

Bearing and Seal Cavity Lubrication: SAE 30 Non-Detergent Oil.

Discharge Spool Flange: Gray Iron 30.

Gaskets: Vegetable Fiber, Resistant Synthetic Rubber and Cork.

O-Rings: Buna-N.

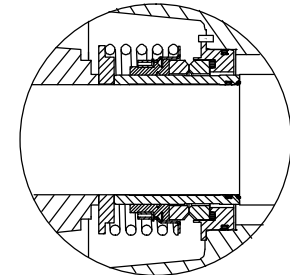
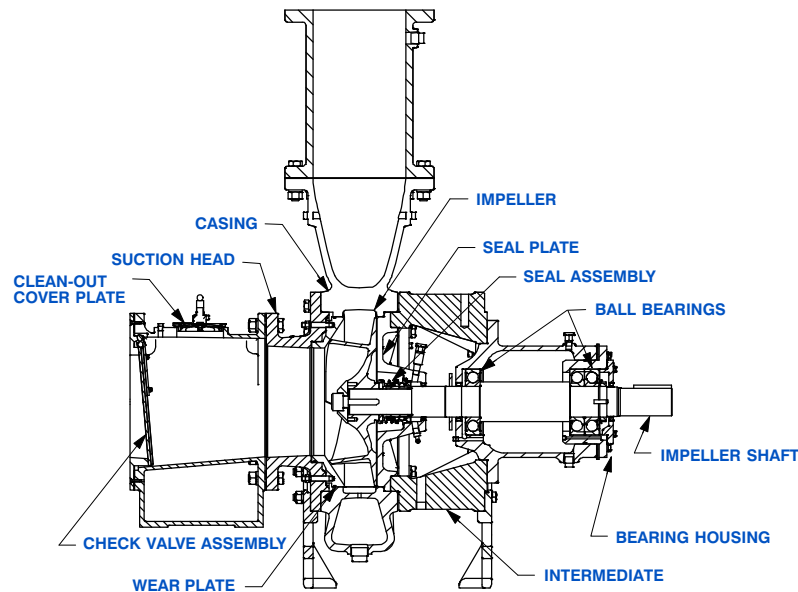
Hardware: Standard Plated Steel.

Bearing and Seal Cavity Bottle Oilers.

Strainer.

Optional Equipment: CD4MCu Stainless Steel Impeller and Wear Plate. G-R Hard Iron Impeller and Wear Plate. High Pump Temperature Shutdown Kit. Permalon Seal.

**Consult Factory for Applications Exceeding Maximum Pressure and/or Temperature Indicated.*



SEAL DETAIL

Type 2, Mechanical, Oil-Lubricated, Double Floating, Self-Aligning. Silicon Carbide Rotating and Stationary Faces. Stainless Steel 316 Stationary Seat. Fluorocarbon Elastomers (DuPont Viton[®] or Equivalent). Stainless Steel 18-8 Cage and Spring. Maximum Temperature Pumped is 160°F (71°C).*



GORMAN-RUPP PUMPS

www.grpumps.com

Specifications Subject to Change Without Notice

Printed in U.S.A.

Specification Data

SECTION 50, PAGE 2525

APPROXIMATE
DIMENSIONS and WEIGHTS

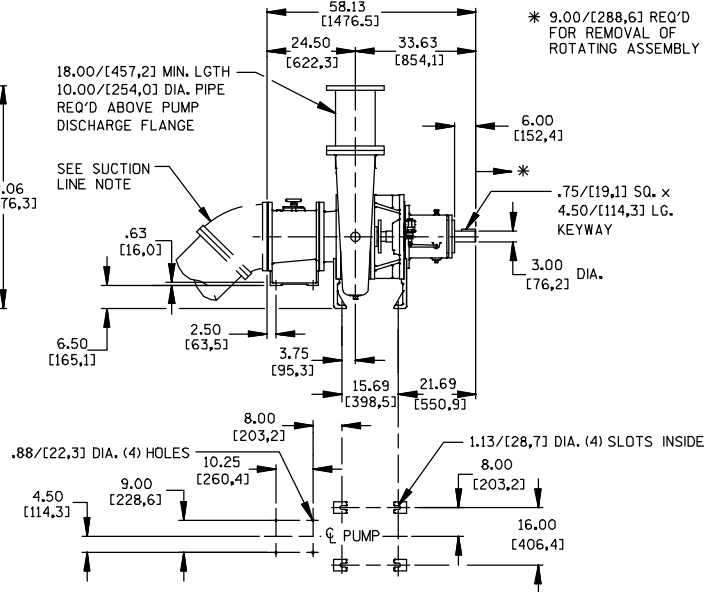
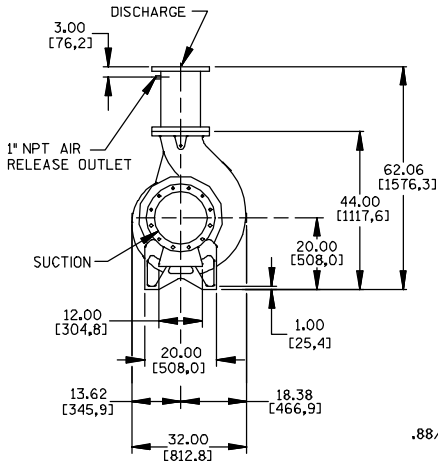
NET WEIGHT: 2175 LBS. (987 KG.)

SHIPPING WEIGHT: 2300 LBS. (1043 KG.)

EXPORT CRATE SIZE: 96 CU. FT. (2,7 CU. M.)

SUCTION:
BOTTOM 1.00/[25,4] DIA. (6) HOLES DRILLED THRU.
TOP .875-9 UNC-2B (6) PLACES TAPPED TO DEPTH AS FOLLOWS:
(2)-HOLES LOCATED 45° FROM CENTER ARE TAPPED 1.31 [33,3]
DEEP. REMAINING (4) HOLES TAPPED THRU. ALL HOLES LOCATED
ON A 17.00/[431,8] DIA. B.C.

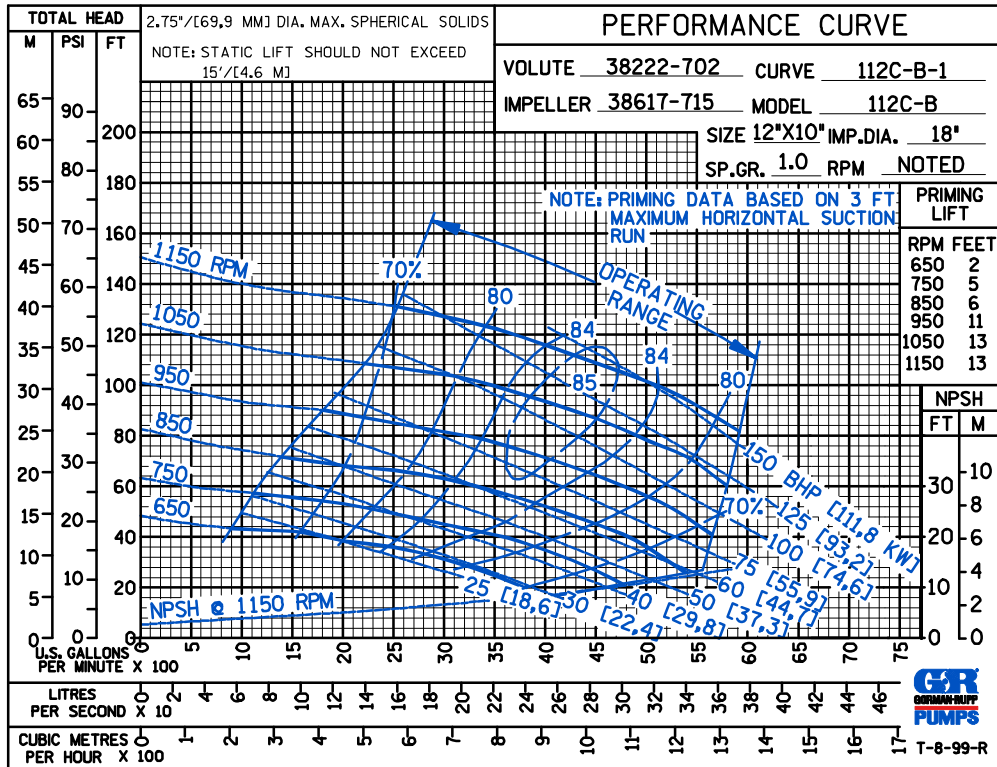
SUCTION LINE NOTE:
FOR SELF PRIMING APPLICATION AVOID HORIZONTAL SUCTION LINES.
IF USED, MAXIMUM ACCEPTABLE RUN IS 72.00/[1828,8]. PREFERRED
INSTALLATION WOULD ANGLE SUCTION LINE DOWNWARD WITH 45° ELBOW
AS SHOWN. LONG HORIZONTAL SUCTION LINES REDUCE EFFICIENCY BY
CREATING INCREASED PRIMING TIME, INCREASED OPERATIONAL TIME IN
PARTIAL PRIME CONDITION, SURGING, AND DECREASED SHAFT AND
BEARING LIFE.



DISCHARGE:
125# ANSI 10.00/[254,0] FLANGE 16.00/[406,4] O.D.
(12) HOLES 1.00/[25,4] DIA. ON A 14.25/[362,0] DIA. B.C.

DIMENSIONS:
INCHES
[MILLIMETERS]

**MULTI-SPEED
CURVE
PERFORMANCE
BASED ON
WATER**



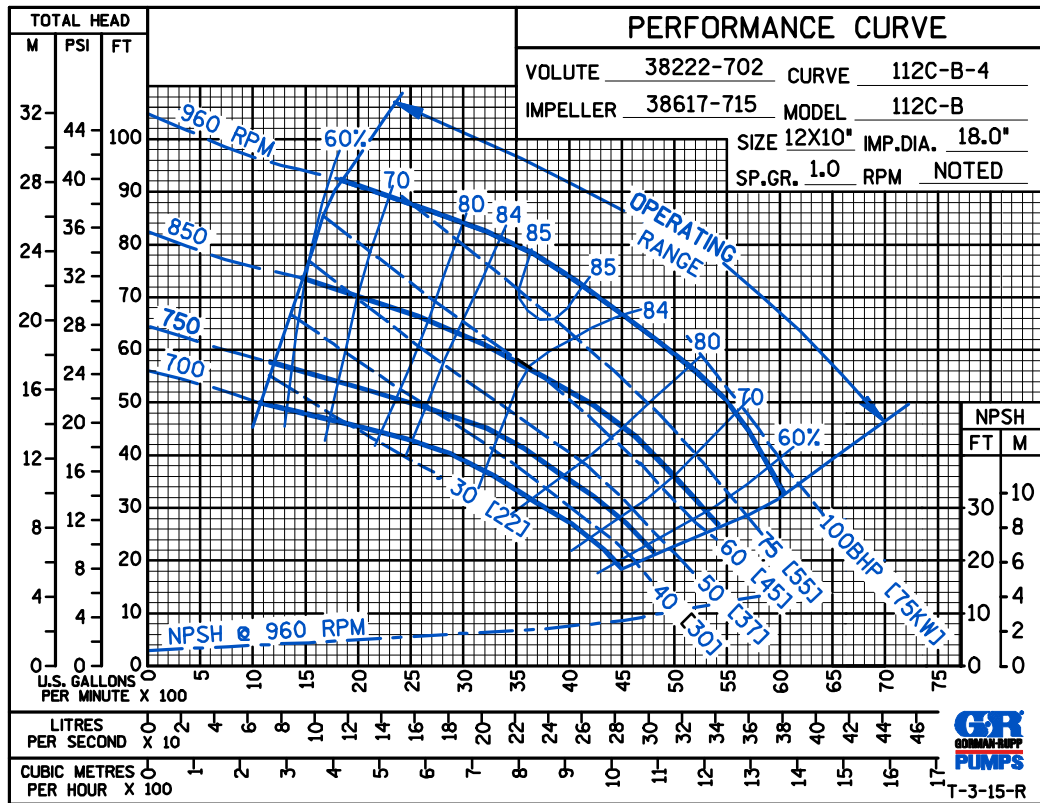
GORMAN-RUPP PUMPS

www.grpumps.com

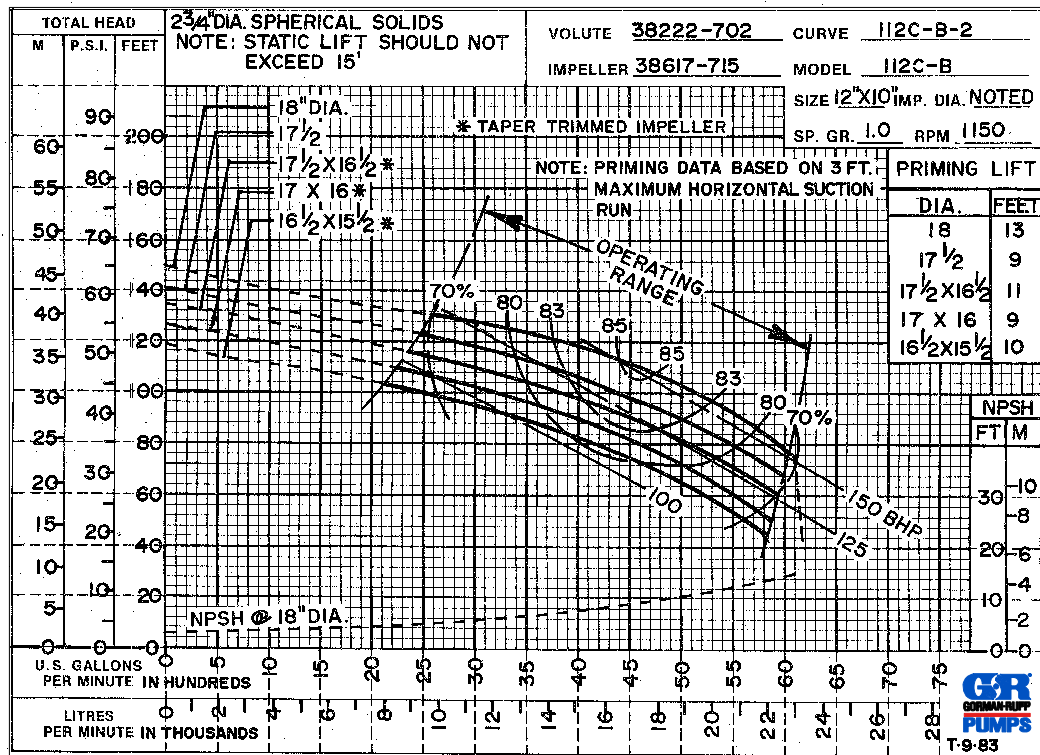
Specifications Subject to Change Without Notice

Printed in U.S.A.

**MULTI-SPEED
CURVE
PERFORMANCE
BASED ON
WATER**



**60 HERTZ
PERFORMANCE
BASED ON
WATER
TRIMMED
IMPELLER**



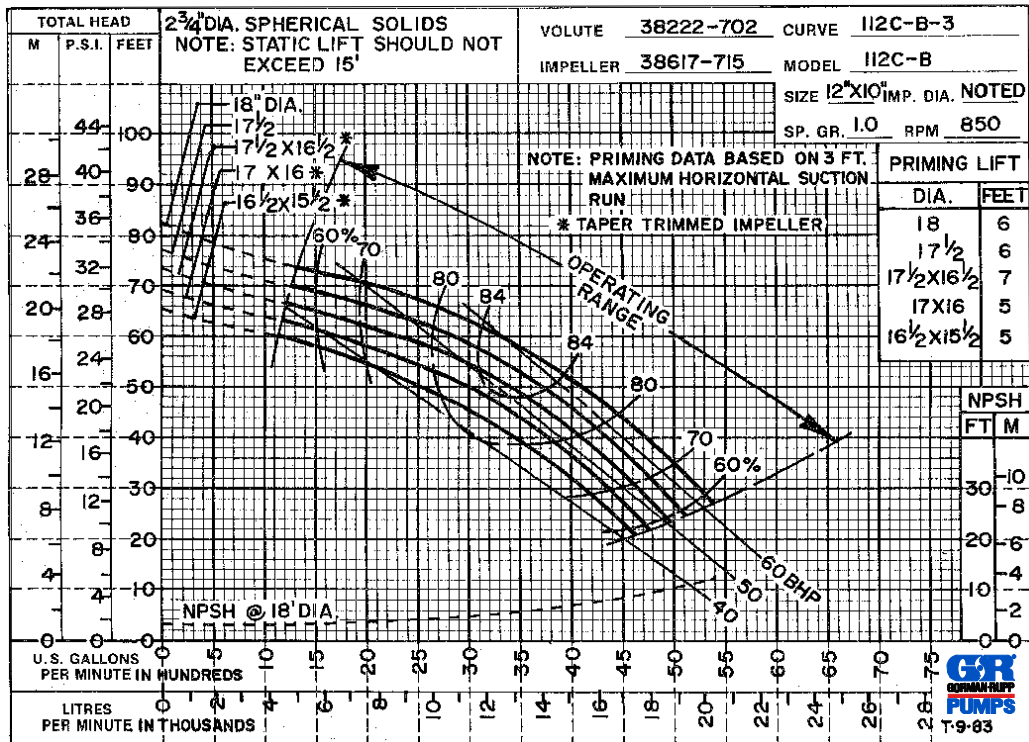
GORMAN-RUPP PUMPS

www.grpumps.com

Specifications Subject to Change Without Notice

Printed in U.S.A.

**60 HERTZ
PERFORMANCE
BASED ON
WATER
TRIMMED
IMPELLER**



GORMAN-RUPP PUMPS

www.grpumps.com

Specifications Subject to Change Without Notice

Printed in U.S.A.