



Self Priming Centrifugal Pump

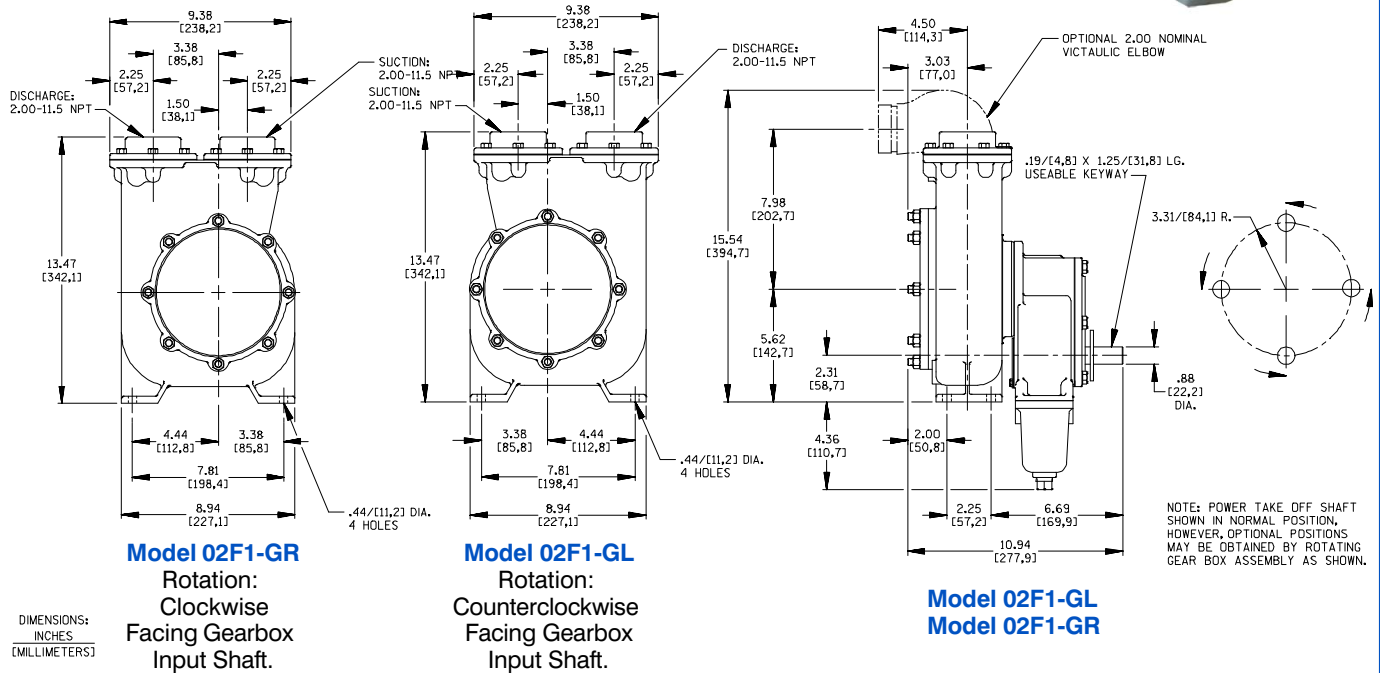
Models 02F1-GL and 02F1-GR

Size 2" x 2"

PUMP SPECIFICATIONS

- Size:** 2" x 2" (51 mm x 51 mm) NPT - Female.
- Casing:** Aluminum Alloy 356-T6.
Maximum Operating Pressure 234 psi (1613 kPa).*
- Enclosed Type, Six Vane Impeller:**
Aluminum Alloy 356-T6 w/Gray Iron 30 Hub Insert.
- Pinion Shaft:** Alloy Steel 4320.
- Replaceable Wear Ring:** Copper Alloy C93200.
- Removable Cover Plate:** Gray Iron 30, 6 lbs. (3 kg).
- Seal:** Type 21, Mechanical, Self-Lubricated. Carbon Rotating Face.
Ni-Resist Stationary Face. Fluorocarbon Elastomers (DuPont Viton® or Equivalent). Stainless Steel No. 18-8 Cage and Spring.
Maximum Temperature of Liquid Pumped, 160°F (71°C).*
- Seal Guard:** Brass Tubing ASTM B-135.
- Gearbox Housing:** Gray Iron 30.
Gearbox Lubrication: SAE 90 Gear Oil.
- Gear:** Alloy Steel 4620.
- Gear Ratio:** 5.69:1 Increase.
- Bearings:** Open Single Row Ball.
- Flanges:** Gray Iron 30.
- Gaskets:** Buna-N w/Cork and Vegetable Fiber.
- Hardware:** Standard Plated Steel.
- Optional Equipment:** Victaulic™ Elbow.
Victaulic is a Registered Trademark of Victaulic Company of America.

**Consult Factory for Applications Exceeding Maximum Pressure and/or Temperature Indicated.*



THE GORMAN-RUPP COMPANY • MANSFIELD, OHIO
GORMAN-RUPP OF CANADA LIMITED • ST. THOMAS, ONTARIO, CANADA

www.grpumps.com

Specifications Subject to Change Without Notice

Printed in U.S.A.

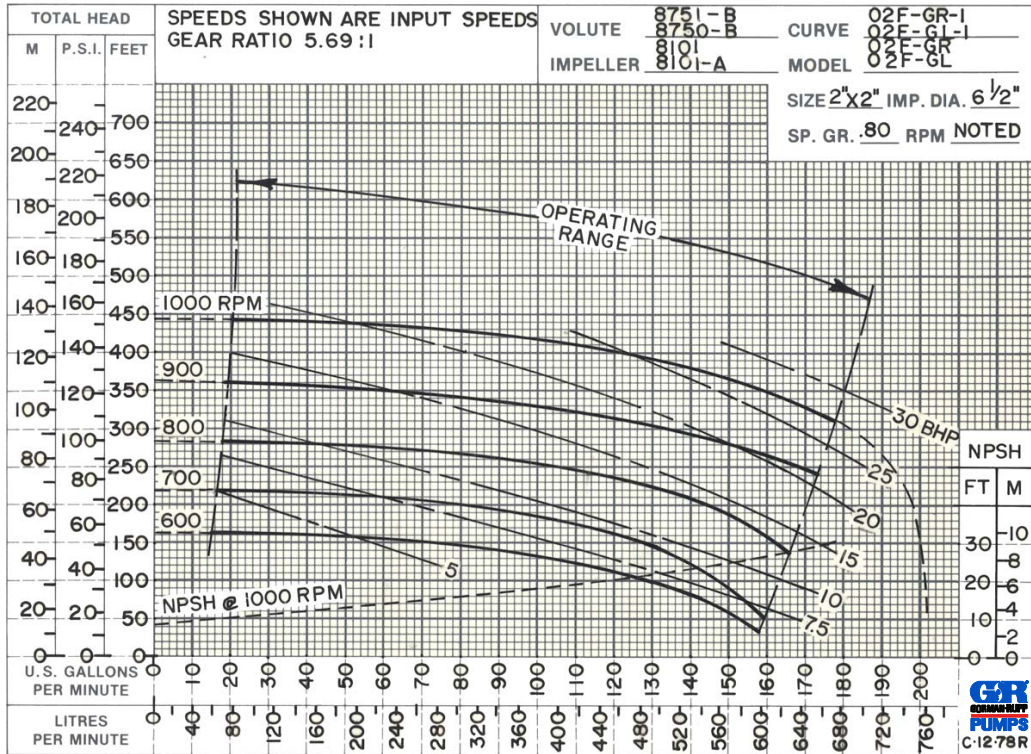
Specification Data

SECTION 110, PAGE 550

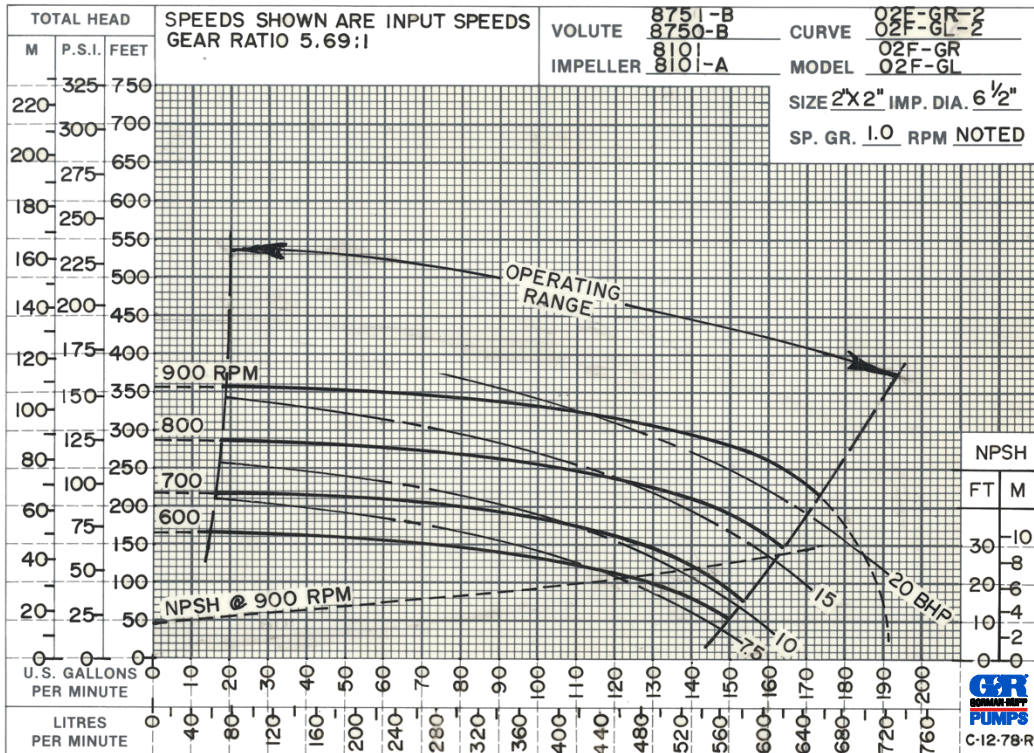
APPROXIMATE
DIMENSIONS and WEIGHTS

NET WEIGHT: 43 LBS. (19,5 KG.)
SHIPPING WEIGHT: 53 LBS. (24 KG.)
EXPORT CRATE SIZE: 2.2 CU. FT. (0,06 CU. M.)

PERFORMANCE
BASED ON
PETROLEUM



PERFORMANCE
BASED ON
WATER



THE GORMAN-RUPP COMPANY • MANSFIELD, OHIO

GORMAN-RUPP OF CANADA LIMITED • ST. THOMAS, ONTARIO, CANADA

Specifications Subject to Change Without Notice

Printed in U.S.A.