

# Priming Assisted Centrifugal Pump w/Autostart



## Model PAH10B60-6136H FT4 Size 12" x 10"



Total Head		Capacity of Pump in U.S. Gallons per Minute (GPM) at Continuous Performance			
P.S.I.	Feet				
173.4	400	N/A	1650	1650	1650
151.7	350	N/A	3225	3980	4125
130.0	300	N/A	3260	4220	5150
108.4	250	2100	3290	4230	5210
86.7	200	2190	3300	4230	5220
65.0	150	2195	3300	4230	5250
43.3	100	2200	3300	4240	5250
21.7	50	2210	3305	4240	5280
<b>Suction Lift</b>		<b>25'</b>	<b>20'</b>	<b>15'</b>	<b>10'</b>



### PUMP SPECIFICATIONS

**Size:** 12" x 10" (305 mm x 254 mm) Flanged.

**Casing:** Ductile Iron 65-45-12.

Maximum Casing Pressure 250 psi (1723 kPa) \*

Maximum Operating Pressure 250 psi (1723 kPa) at Temperatures up to 100° F (37° C) Based on System Component Limitations.\*

**Enclosed Type, Four Vane Impeller:** Ductile Iron 80-55-06.

Handles 2" (50,8 mm) Diameter Spherical Solids.

**Impeller Shaft:** Alloy Steel 4150M.

**Replaceable Wear Ring:** Ductile Iron 65-45-12.

**Bearing Pedestal:** Gray Iron 30.

**Seal Plate:** Ductile Iron 65-45-12.

**Seal:** Mechanical, SAE Non-Detergent Oil-Lubricated. Silicon Carbide Rotating Face and Stationary Seat. Fluorocarbon Elastomers (DuPont Viton® or Equivalent). Stainless Steel 18-8 Cage and Spring. Maximum Temperature of Liquid Pumped, 160°F (71° C).\*

**Shaft Sleeve:** Stainless Steel 303/304.

**Priming Chamber:** Gray Iron 30 Housing w/Stainless Steel Float and Linkage.

**Discharge Check Valve:** Ductile Iron Housing w/Welded Nickel Seat and Buna-N Flapper.

**Radial Bearing:** Open Single Ball.

**Thrust Bearing:** Open Double Ball.

**Bearing Cavity Lubrication:** Lithium EP2 Grease.

**Suction Spool:** Ductile Iron 65-45-12.

**Gaskets:** Resistant Synthetic Rubber, Vegetable Fiber w/Compressed Synthetic Fibers.

**O-Rings:** Buna-N, Fluorocarbon Elastomers (DuPont Viton® or Equivalent).

**Hardware:** Standard Plated Steel.

**Seal Cavity Oil Level Sight Gauges.**

\*Consult Factory for Applications Exceeding Maximum Pressure and/or Temperature Indicated.

**Standard Equipment:** Gear-Driven Air Compressor. Hoisting Bail. Combination Skid Base w/Fuel Tank. [Full Feature Control Panel Single Ball Type Float Switch](#)..\*\*

**Optional Equipment:** Battery. Heated Priming Chamber Kit. Suction Vacuum and Discharge Pressure Gauge Kit. Liquid Level Sensor. Threaded Flange Kit.

\*\*50 Ft. (15 m) Standard Length; Dual Switches and Alternate Cable Lengths Available From the Factory.

**WARNING!**

Do not use in explosive atmosphere or for pumping volatile flammable liquids.

### ENGINE SPECIFICATIONS

**Model:** John Deere 6136CI440

**EPA Tier:** Tier 4.

**Type:** Six Cylinder, Charge Air Cooled, Diesel Engine, Open w/ Air Compressor.

**Displacement:** 827 Cu. In. (13,6 liters).

**Governor:** Electronic Isochronous.

**Lubrication:** Forced Circulation.

**Air Cleaner:** Dry Type.

**Fuel Tank:** 284 U.S. Gals. (1075 liters).

**Full Load Operating Time:** 10.5 Hrs.

**Starter:** 12V Electric.

**Standard Features:** Muffler w/Guard and Weather Cap, DOC, DPF & SCR Exhaust After-Treatment System.

**Engine Control Features:** Padlockable Box with Throttle Control, Tachometer, Coolant Temperature, Oil Pressure, Voltage and Overstart Indicators/Shutdowns. Manual/Stop/Auto Keyswitch. Audible Startup Warning Delay. Fuel Level Display/Alarm/Shutdown. Electronic Fuel Level Sensor.

### JOHN DEERE PUBLISHED PERFORMANCE:

Maximum Gross BHP (Continuous)  
585 (436 kW) @ 2100 RPM



## GORMAN-RUPP PUMPS

www.grpumps.com

Specifications Subject to Change Without Notice

Printed in U.S.A.

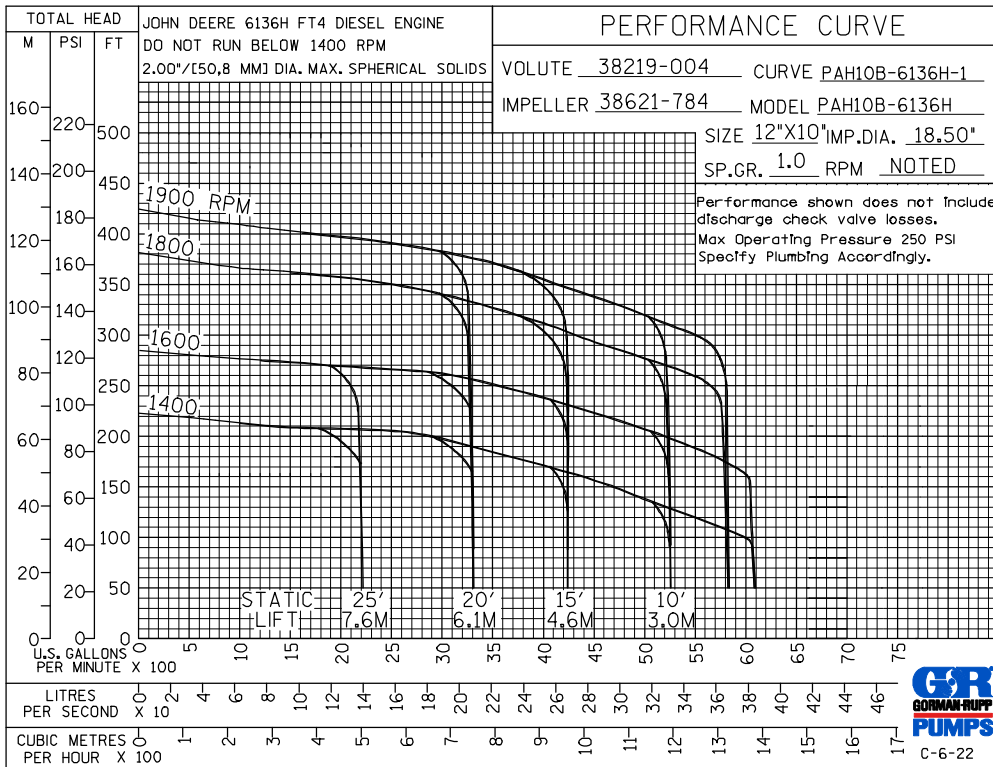
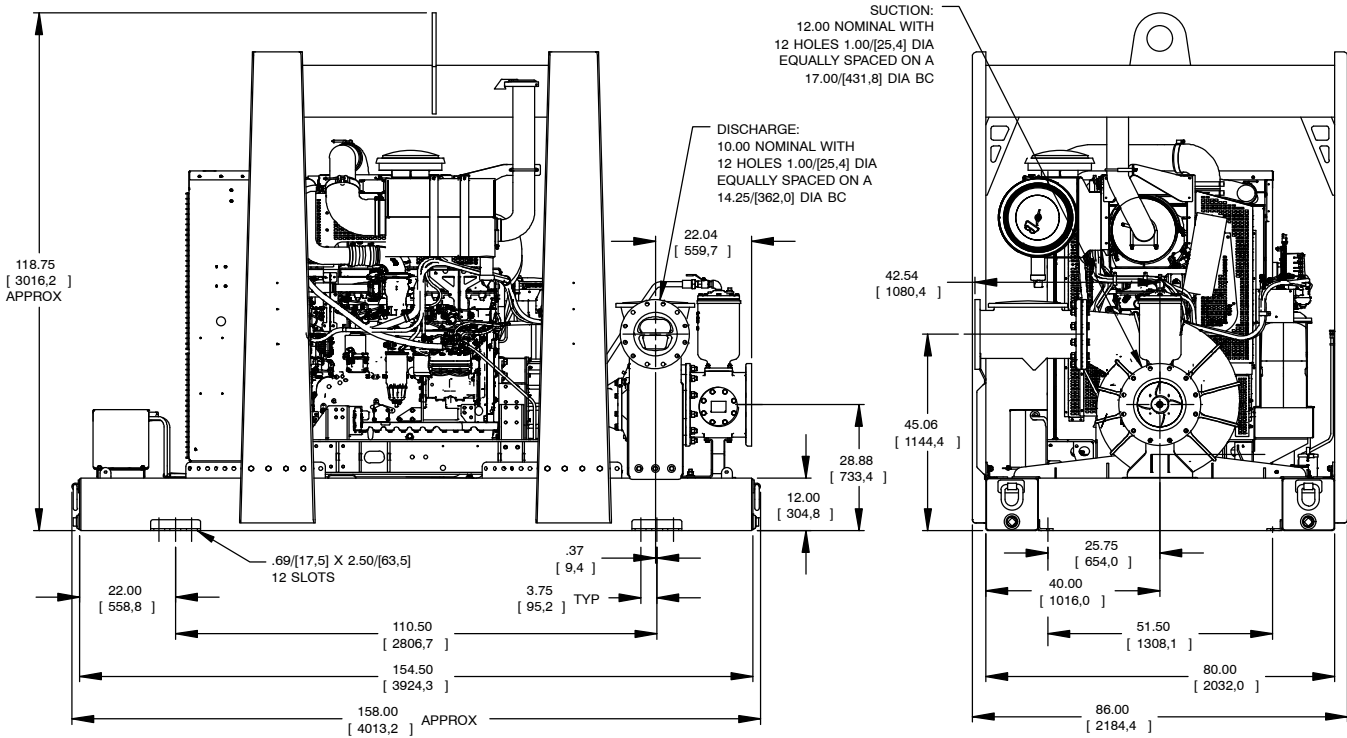
**Specification Data**

**SECTION 43, PAGE 501**

APPROXIMATE  
DIMENSIONS and  
WEIGHTS

**NET WEIGHT:**  
**SHIPPING WEIGHT:**  
**EXPORT CRATE SIZE:**

**12,030 LBS. (5457 KG.)**  
**12,280 LBS. (5570 KG.)**  
**1034 CU. FT. (29,3 CU. M.)**



**GORMAN-RUPP PUMPS**

www.grpumps.com

Specifications Subject to Change Without Notice

Printed in U.S.A.