

TOTAL HEAD

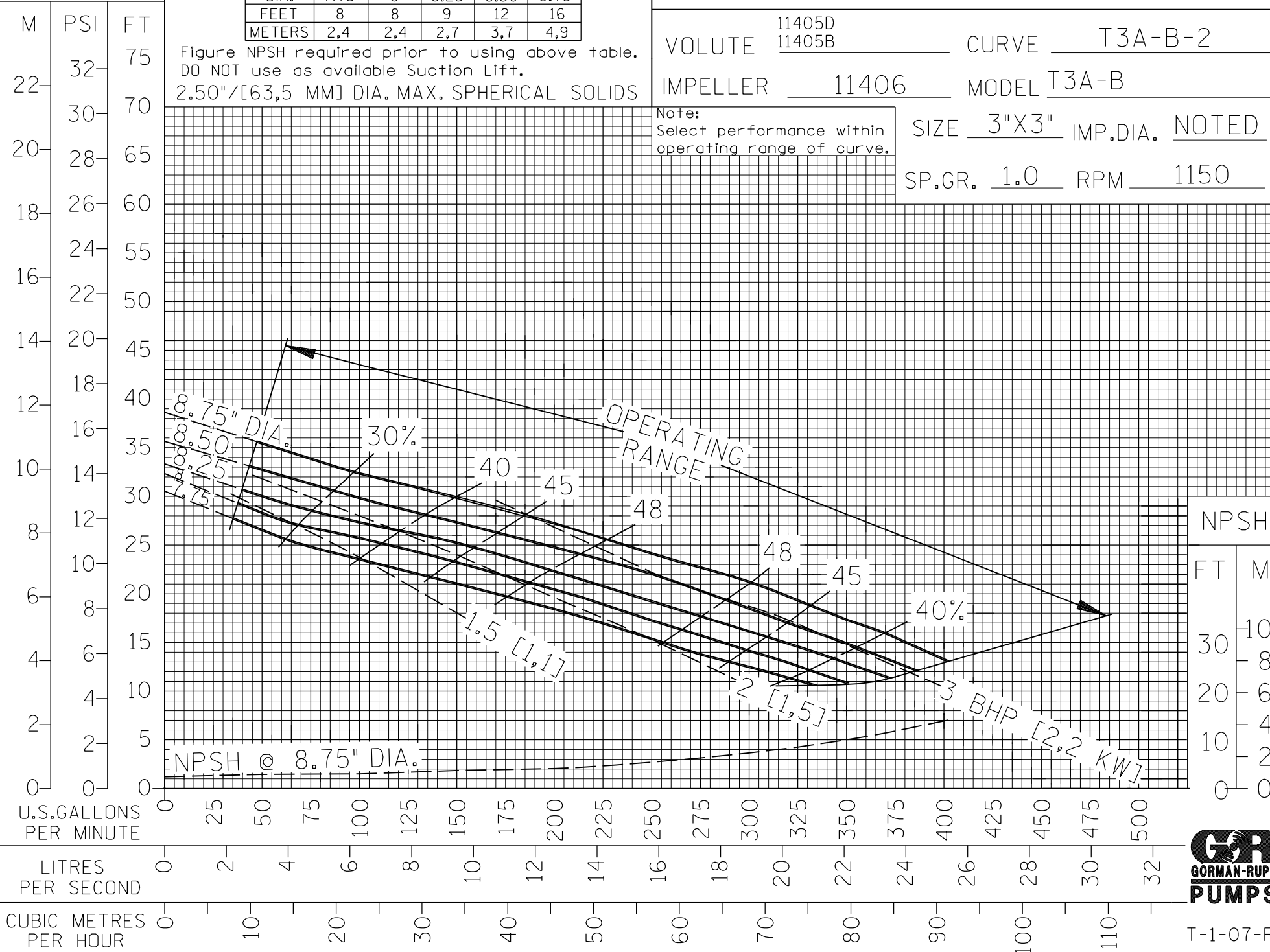
REPRIMING LIFTS

DIA.	7.75"	8"	8.25"	8.50"	8.75"
FEET	8	8	9	12	16
METERS	2,4	2,4	2,7	3,7	4,9

PERFORMANCE CURVE

VOLUTE 11405D
11405B CURVE T3A-B-2
 IMPELLER 11406 MODEL T3A-B
 Note: Select performance within operating range of curve.
 SIZE 3"X3" IMP.DIA. NOTED
 SP.GR. 1.0 RPM 1150

Figure NPSH required prior to using above table.
 DO NOT use as available Suction Lift.
 2.50"/[63,5 MM] DIA. MAX. SPHERICAL SOLIDS



FILE NO. t3ab.s02



T-1-07-R