

# PERFORMANCE CURVE

VOLUTE 38224-705 CURVE T8A-B-7

IMPELLER 12349 MODEL T8A-B

SIZE 8"X8" IMP.DIA. 12.75"

SP.GR. 1.0 RPM NOTED

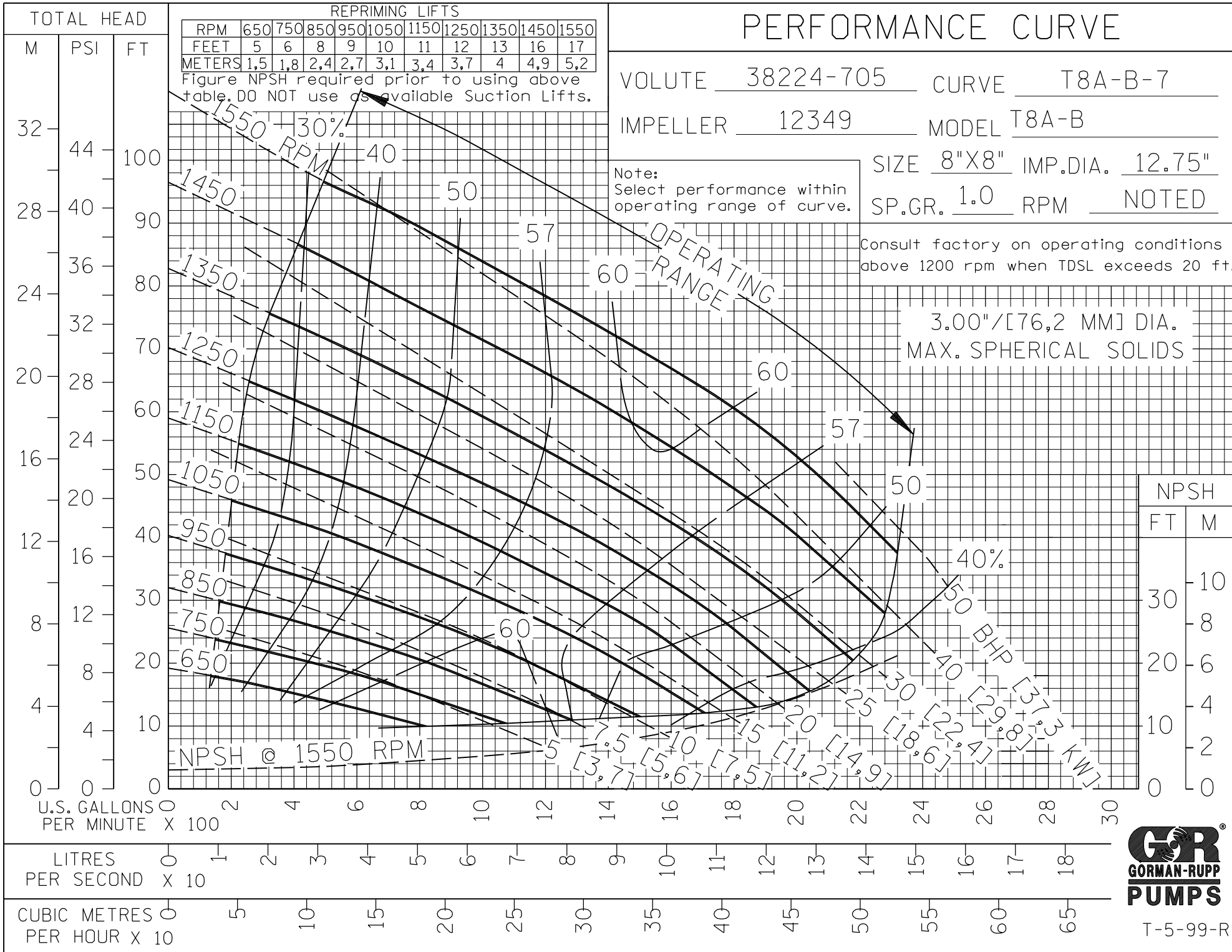
Note:  
Select performance within  
operating range of curve.

Consult factory on operating conditions  
above 1200 rpm when TDSL exceeds 20 ft.

3.00"/[76,2 MM] DIA.  
MAX. SPHERICAL SOLIDS

| REPRIMING LIFTS |     |     |     |     |      |      |      |      |      |      |
|-----------------|-----|-----|-----|-----|------|------|------|------|------|------|
| RPM             | 650 | 750 | 850 | 950 | 1050 | 1150 | 1250 | 1350 | 1450 | 1550 |
| FEET            | 5   | 6   | 8   | 9   | 10   | 11   | 12   | 13   | 16   | 17   |
| METERS          | 1,5 | 1,8 | 2,4 | 2,7 | 3,1  | 3,4  | 3,7  | 4    | 4,9  | 5,2  |

Figure NPSH required prior to using above table. DO NOT use as available Suction Lifts.



| NPSH |    |
|------|----|
| FT   | M  |
| 0    | 0  |
| 10   | 3  |
| 20   | 6  |
| 30   | 9  |
| 40   | 12 |
| 50   | 15 |
| 60   | 18 |
| 70   | 21 |
| 80   | 24 |
| 90   | 27 |
| 100  | 30 |
| 110  | 33 |
| 120  | 36 |
| 130  | 39 |
| 140  | 42 |
| 150  | 45 |
| 160  | 48 |
| 170  | 51 |
| 180  | 54 |
| 190  | 57 |
| 200  | 60 |
| 210  | 63 |
| 220  | 66 |
| 230  | 69 |
| 240  | 72 |
| 250  | 75 |
| 260  | 78 |
| 270  | 81 |
| 280  | 84 |
| 290  | 87 |
| 300  | 90 |

FILE NO. T8ab.s07



T-5-99-R