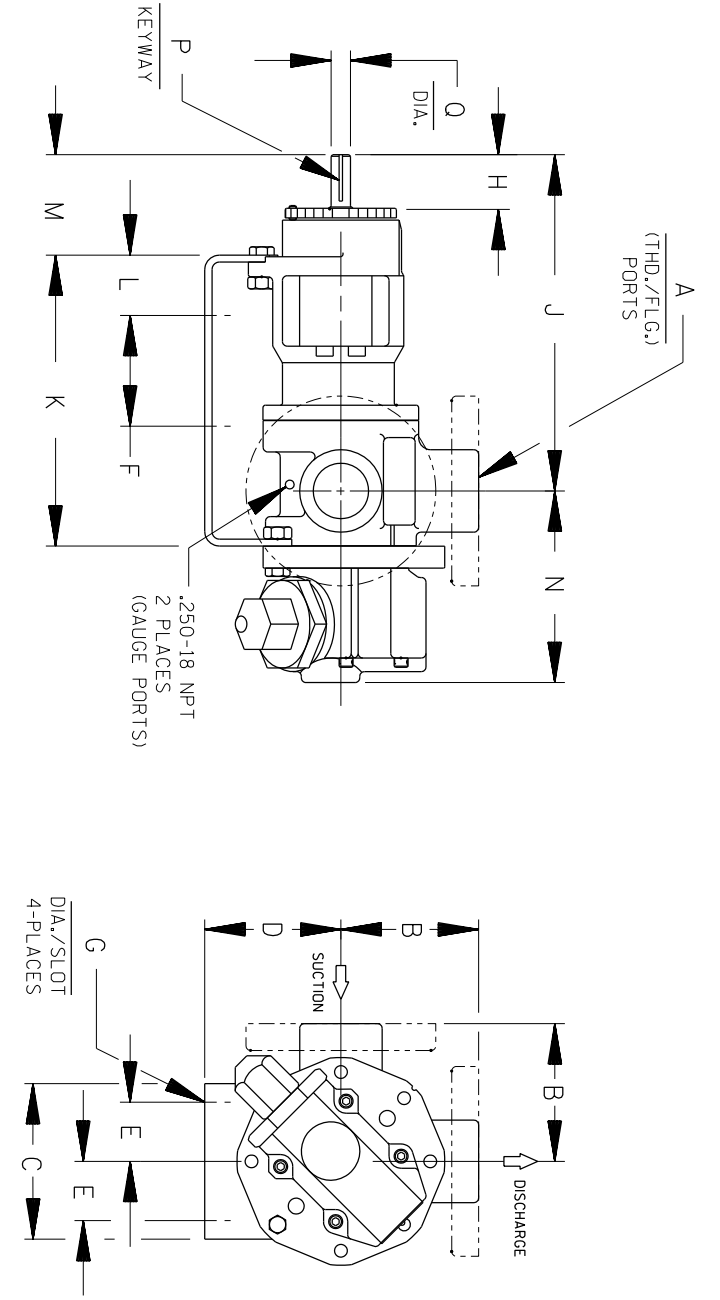


B 16669G



CAD FILE NO.: 16669B

MODEL NUMBERS	PUMP DIMENSIONS - INCHES [MILLIMETERS]														
	A	B	C	D	E	F	G	H	J	K	L	M	N	P	Q
GHS D 1"	4.00 [102]	2.50* [64]	4.00 [102]	4.50 [114]	1.62 [41]	5.50 [140]	.41 [10]	1.16 [30]	8.43 [214]	7.54 [192]	1.09 [28]	2.29 [58]	4.98 [127]	.12 [3]	.50 [13]
	4.00 [102] †	2.50* [64]	4.00 [102]	4.50 [114]	1.62 [41]	5.50 [140]	.41 [10]	1.16 [30]	8.43 [214]	7.54 [192]	1.09 [28]	2.29 [58]	4.98 [127]	.12 [3]	.50 [13]
GHS G 2"	4.00 [102] †	3.50* [89]	4.88 [124]	5.25 [133]	1.62 [41]	8.00 [203]	.41 [10]	1.62 [41]	12.06 [306]	10.72 [272]	1.52 [39]	3.35 [85]	5.70 [145]	.19 [5]	.75 [19]
	4.00 [102] †	3.50* [89]	4.88 [124]	5.25 [133]	1.62 [41]	8.00 [203]	.41 [10]	1.62 [41]	12.06 [306]	10.72 [272]	1.52 [39]	3.35 [85]	5.70 [145]	.19 [5]	.75 [19]
GHS J 3"	6.00 [152] †	4.50* [114]	6.88 [175]	7.00 [178]	2.88 [73]	10.00 [254]	.44 [11]	2.50 [64]	15.68 [398]	14.31 [363]	2.74 [70]	4.48 [114]	8.50 [216]	2.00 [51]	1.00 [25]
	6.00 [152] †	4.50* [114]	6.88 [175]	7.00 [178]	2.88 [73]	10.00 [254]	.44 [11]	2.50 [64]	15.68 [398]	14.31 [363]	2.74 [70]	4.48 [114]	8.50 [216]	2.00 [51]	1.00 [25]
GHS N 2"	5.12 [130]	4.50* [114]	8.00 [203]	6.25 [159]	2.88 [73]	10.00 [254]	.44 [11]	2.58 [66]	16.37 [416]	15.14 [385]	2.69 [68]	4.56 [116]	8.72 [221]	.25 [6]	1.12 [28]
	5.12 [130]	4.50* [114]	8.00 [203]	6.25 [159]	2.88 [73]	10.00 [254]	.44 [11]	2.58 [66]	16.37 [416]	15.14 [385]	2.69 [68]	4.56 [116]	8.72 [221]	.25 [6]	1.12 [28]
GHS R 4"	7.19 [183]	6.50 [165]	10.50 [267]	7.00 [178]	3.75 [95]	13.75 [349]	.52 [13]	2.25 [57]	17.87 [454]	17.36 [441]	1.86 [47]	4.70 [119]	11.31 [287]	.38 [10]	1.44 [37]
	7.19 [183]	6.50 [165]	10.50 [267]	7.00 [178]	3.75 [95]	13.75 [349]	.52 [13]	2.25 [57]	17.87 [454]	17.36 [441]	1.86 [47]	4.70 [119]	11.31 [287]	.38 [10]	1.44 [37]
	7.19 [183]	6.50 [165]	10.50 [267]	7.00 [178]	3.75 [95]	13.75 [349]	.52 [13]	2.25 [57]	17.87 [454]	17.36 [441]	1.86 [47]	4.70 [119]	11.31 [287]	.38 [10]	1.44 [37]
	7.19 [183]	6.50 [165]	10.50 [267]	7.00 [178]	3.75 [95]	13.75 [349]	.52 [13]	2.25 [57]	17.87 [454]	17.36 [441]	1.86 [47]	4.70 [119]	11.31 [287]	.38 [10]	1.44 [37]

* STANDARD DIMENSION
 † PORTS ARE COMPATIBLE WITH 150* OR 300* ANSISTAINLESS STEEL FLANGES. ALL OTHER PORTS ARE TAPPED NPT FOR ANS/PIPE. OPTIONAL (DIN) FLANGES OR TAPPED (BSP) PORTS AVAILABLE FOR EXPORT MARKET.
 ‡ 180° HOUSING

CLOCKWISE ROTATION (FROM SHAFT END)

THE GORMAN-RUPP CO. MANSFIELD, OHIO ST. THOMAS, ONTARIO	DRAWN BY CSI	SCALE NONE	MODEL GHC\GHS 90°
	DATE 1-31-09	REVISED	OUTLINE NUMBER 16669G

DIMENSIONS:
 INCHES
 [MILLIMETERS]

1. DO NOT SCALE DRAWING.
2. GRAPHICS ARE NOT TO SCALE.
3. PUMP GRAPHICS ARE BASED ON A "G" SIZE PUMP.

GHC/GHS SST, SEC. 570: PAGE 17
 JUNE 2009