

B 17106

* 18.00/[457,2] RECOMMENDED FOR
REMOVAL OF BACK COVER PLATE.

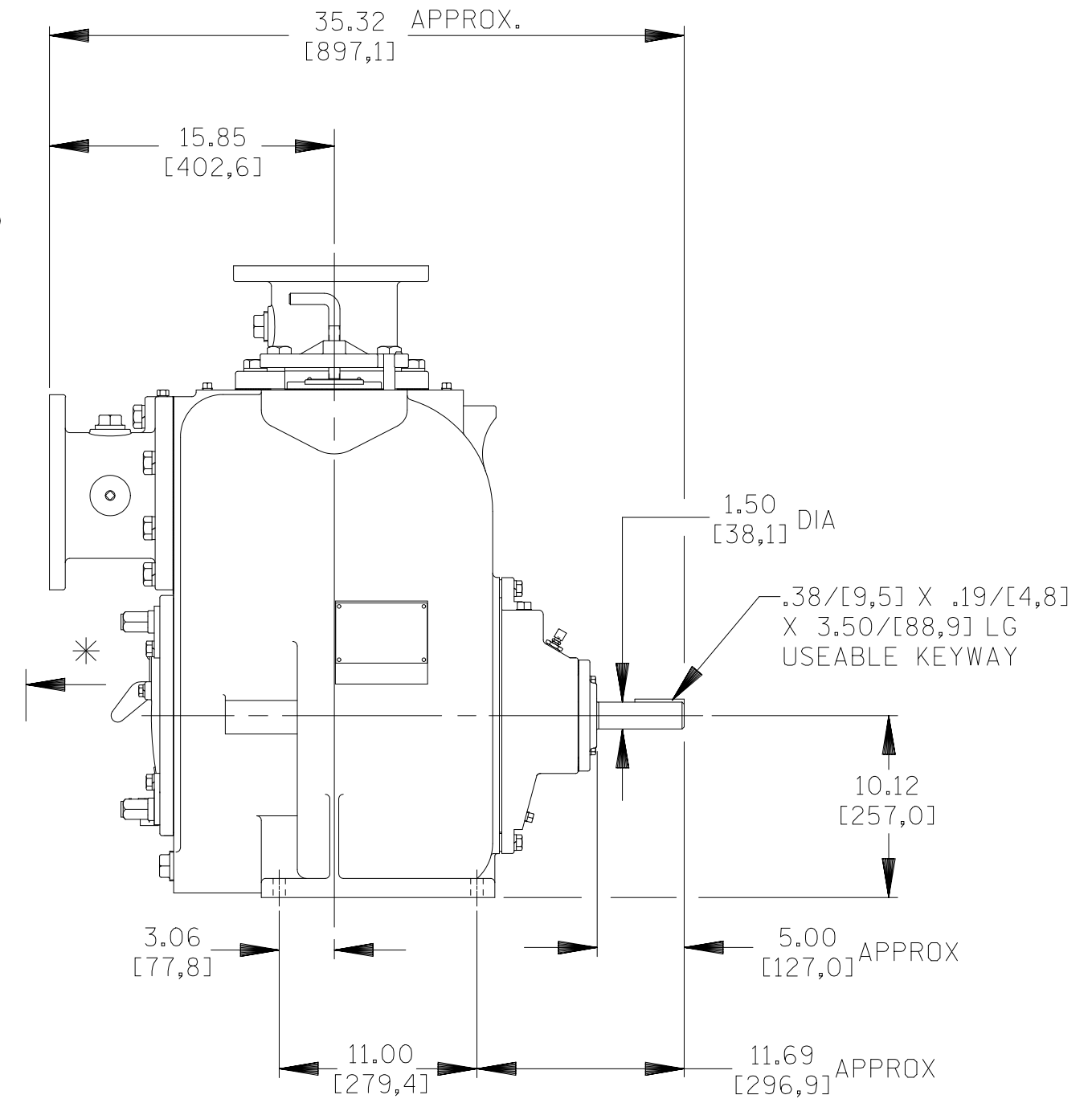
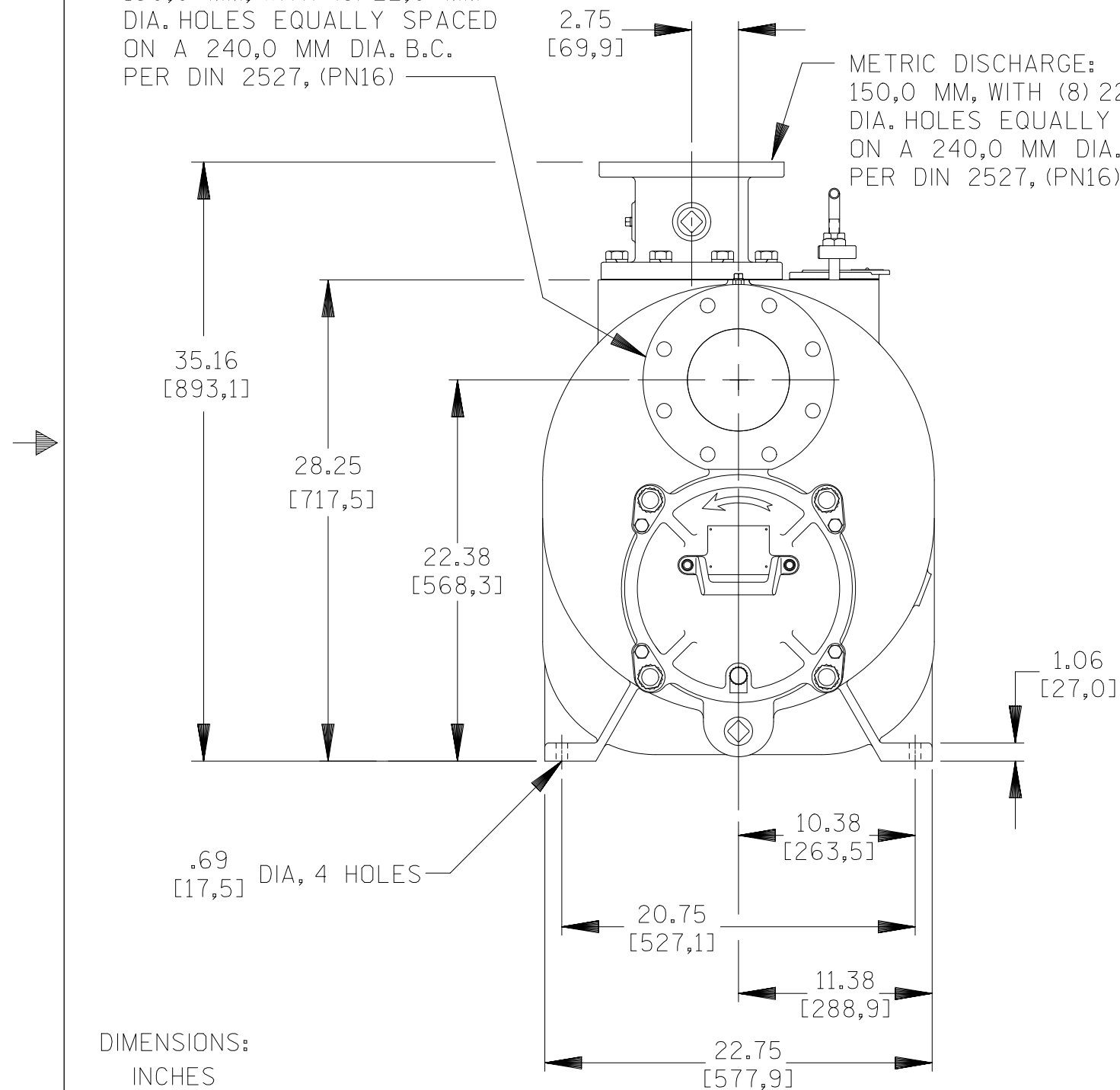
10.50/[266,7] REQUIRED FOR
REMOVAL OF BACK COVER PLATE.

METRIC SUCTION:

150,0 MM, WITH (8) 22,0 MM
DIA. HOLES EQUALLY SPACED
ON A 240,0 MM DIA. B.C.
PER DIN 2527, (PN16)

METRIC DISCHARGE:

150,0 MM, WITH (8) 22,0 MM
DIA. HOLES EQUALLY SPACED
ON A 240,0 MM DIA. B.C.
PER DIN 2527, (PN16)



DIMENSIONS:
INCHES
[MILLIMETERS]

T6AS-B /FM
T6BS-B /FM

07-024

	THE GORMAN-RUPP CO. MANSFIELD, OHIO ST. THOMAS, ONTARIO		DRAWN BY REP	SCALE 1/8	MODEL NOTED
	DATE 5-12-00	REVISED 7-2-07	OUTLINE NUMBER 17106		