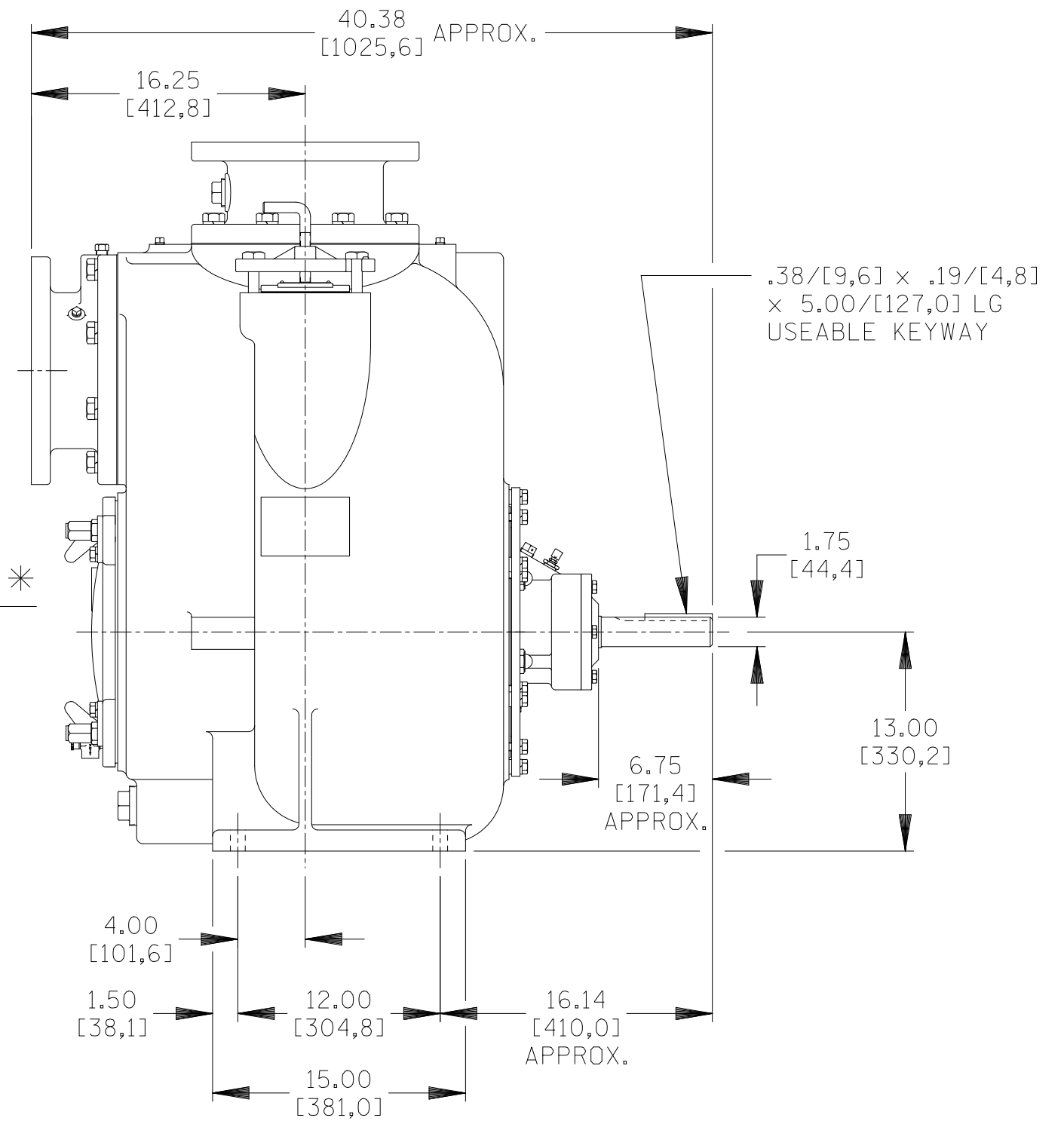
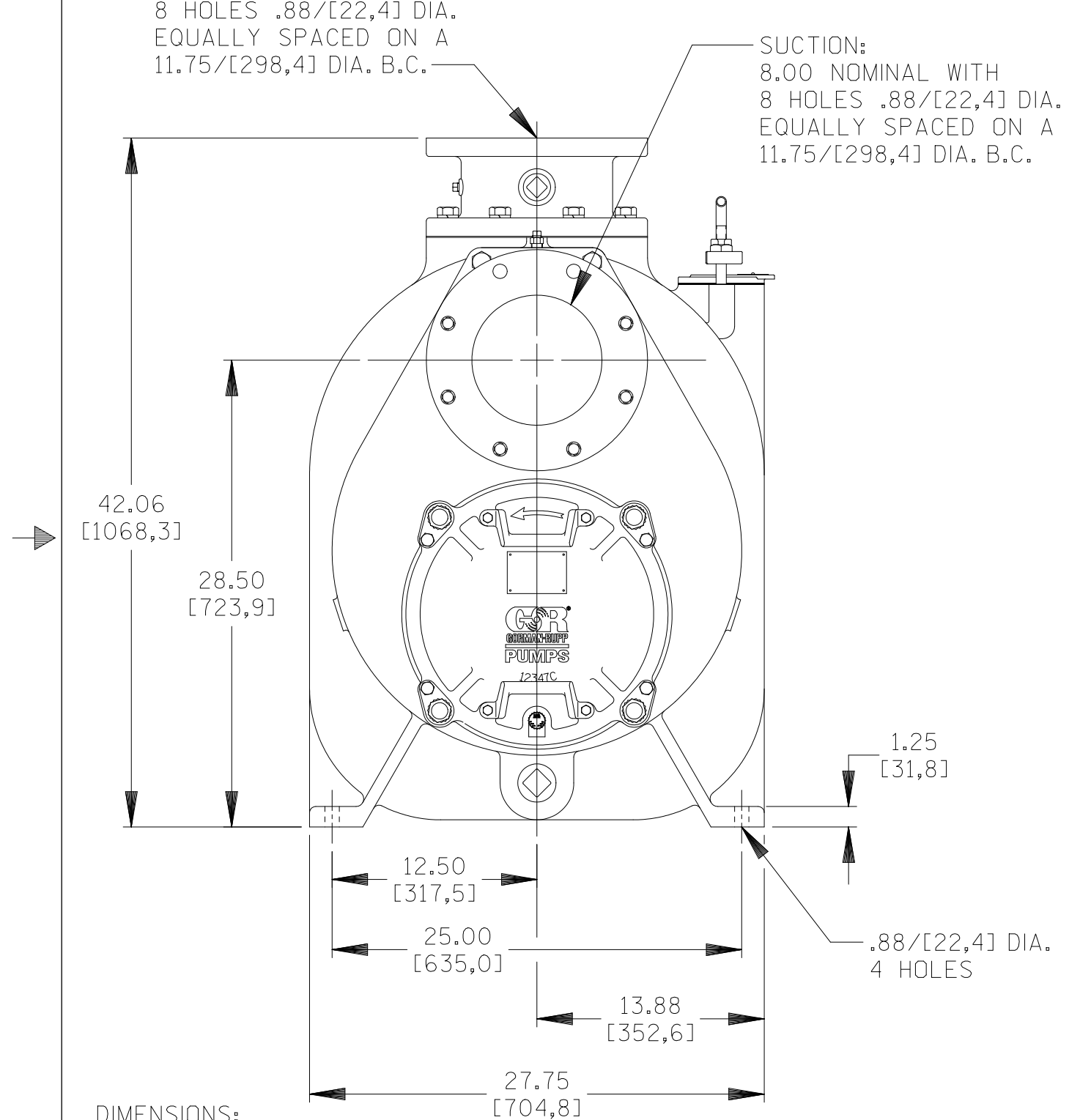


B 17246

* 24.00/[609,6] RECOMMENDED FOR
REMOVAL OF BACK COVER PLATE
13.00/[330,2] REQUIRED FOR
REMOVAL OF BACK COVER PLATE

DISCHARGE:
8.00 NOMINAL WITH
8 HOLES .88/[22,4] DIA.
EQUALLY SPACED ON A
11.75/[298,4] DIA. B.C.

SUCTION:
8.00 NOMINAL WITH
8 HOLES .88/[22,4] DIA.
EQUALLY SPACED ON A
11.75/[298,4] DIA. B.C.



DIMENSIONS:
INCHES
[MILLIMETERS]

	THE GORMAN-RUPP CO. MANSFIELD, OHIO ST. THOMAS, ONTARIO		DRAWN BY VP	SCALE 1/8	MODEL T8AS-B /F
	DATE 8-8-01	REVISED 7-2-07	OUTLINE NUMBER 17246		

07-024