



***Pumps for Original Equipment Manufacturers***



# **Meeting the needs of the original equipment manufacturer.**

**GORMAN-RUPP meets the needs of the original equipment manufacturer by designing and building a full line of custom pumps and pumping systems for specific applications in all industries.**

**When you specify Gorman-Rupp, you benefit from knowledgeable engineers and assistance, worldwide service centers, and over 3,500 pumps to choose from. This is all backed by a one-year warranty.**

**Whether the demand is for new pump design or adapting an existing pump to meet precise requirements, our experienced personnel are up to the challenge.**

**Gorman-Rupp has been manufacturing pumping systems and providing superior fluids handling solutions since 1933.**

**Many of the innovations introduced by Gorman-Rupp have become industry standards.**

**We have one of the largest selections of pumps in the world. Pump models include self-priming centrifugal, standard centrifugal, submersible, rotary gear and diaphragm pumps.**

**We have four manufacturing plants with over one million square feet of floor space and five distribution centers throughout the world.**

**As we continue to provide pumping systems and fluid handling solutions to customers around the globe, we never lose sight of the original philosophy that started our company in 1933. We still believe in innovation, improvement and superior products.**

Superior products require state-of-the-art facilities, and Gorman-Rupp manufacturing facilities are among the most efficient and modern facilities in the world. ■ We constantly update our plants and employ the latest technology to ensure that our products will be the most reliable in the industry. ■ Our commitment to engineering and manufacturing superiority is the same as it was in 1933. We realize that modern, efficient and state-of-the-art facilities are necessary for providing superior pumping products and solutions.

## **State-of-the-art facilities.**



**State-of-the-art, fully automated machining centers provide high-speed, high-quality machining of pump castings.**



**Rough castings are stored and ready for machining and assembly into finished products.**

**High-speed pump assembly lines are designed to assemble large volumes of pumps with very short lead times.**

## GORMAN-RUPP PUMPS

handle everything from solids and corrosives to petroleum products and clear liquids. You'll find them operating reliably in steels mills, paper mills, sewage treatment plants, fish meal plants, wineries, tanneries, petroleum bulk plants, automotive appliance factories, laun-



*T Series™ pumps transfer coolant from the sump to filter and back to CNC machines at an automotive manufacturing plant in Michigan, USA.*

# **Pumps from Gorman-Rupp serve a variety of OEM markets, worldwide.**

*60 Series® high-pressure, self-priming centrifugal pump is used in a street cleaning truck.*



*0 Series® high-pressure, self-priming centrifugal pump is mounted on a fire truck for direct pumping from the tank to the fire in Ohio, USA.*

dry facilities and thousands of other applications. When there is a fluid to move, Gorman-Rupp can handle it. ■ Gorman-Rupp pumps can handle almost any fluid from OEMs including sludge, slurry, brackish or viscous fluid, dirty water, aircraft fuels, gasoline, fuel oils, solvents, and petrochemicals. Our self-priming centrifugal, straight centrifugal, submersible, diaphragm, rotary gear pumps and oil recovery pumps are ideal for OEMs of bulk plants, tank farms, barges, tank cars and trucks. ■ Gorman-Rupp pumps are also great for OEMs in need of high performance, energy-efficient irrigation pumps, versatile power take off pumps, high pressure pumps, rotary gear pumps and self-priming pumps for liquid manure handling, fertilizer transfer and general dewatering use. ■ Our simple pump design with few moving parts minimizes the need for repair or service, and routine field maintenance can be completed with common hand tools.

*10 Series® pumps are used to backwash the filtration system at a water reclamation facility in Florida, USA.*



*10 Series® pumps are used to transfer 110° wastewater from washing machines to the filtration system and heat exchanger at a commercial laundromat in Ohio, USA.*

*A U.S. Military transfer system uses a Gorman-Rupp 0 Series® pump to transfer liquids to vehicles in the field.*



## Self-priming Centrifugal

Gorman-Rupp self-priming centrifugal pumps are easy to install and easy to service. Because they're self-priming, they can be mounted high and dry at floor level, with only the suction line down in the liquid. If service or maintenance is required it can be completed quickly and easily. There is no need to pull the pump. There are no long drive shafts to install and align. No hoists or cranes are required. And, there is never any need for service personnel to enter the sump. Pumps are available as basic units for connection to your power source or may be flex-coupled, V-belt driven or engine mounted.

**T Series™ pumps are used for recirculation in the holding tank and to transfer clean coolant from the holding tank to CNC machines at an automotive manufacturing plant in Michigan, USA.**



**10 Series® pump is used to transfer wastewater from a washing machine to the lint extractor at a commercial laundromat in Michigan, USA.**



**3"-90° Rotary-Gear pumps are used to offload and load chemicals to or from tanker trucks and rail cars at a chemical processing plant in Iowa, USA.**



**Super T Series™**

**Size:** 3", 4", 6" (75 mm, 100 mm, 150 mm)  
**Max. Capacity:** 1500 GPM (94.6 lps)  
**Max. Head:** 108 feet (32.9 m)  
**Max. Solids:** 3" (76.2 mm)



**T Series**

**Size:** 2", 3", 4", 6", 8", 10"  
 (50 mm, 75 mm, 100 mm, 150 mm, 200 mm, 250 mm)  
**Max. Capacity:** 3400 GPM (214.5 lps)  
**Max. Head:** 130 feet (39.6 m)  
**Max. Solids:** 3" (76.2 mm)



**U Series®**

**Size:** 3", 4", 6" (75 mm, 100 mm, 150 mm)  
**Max. Capacity:** 1500 GPM (94.6 lps)  
**Max. Head:** 207 feet (63.1 m)  
**Max. Solids:** 1 1/4" (31.8 mm)



**10 Series®**

**Size:** 1 1/2", 2", 3", 4", 6" (38 mm, 50 mm, 75 mm, 100 mm, 150 mm)  
**Max. Capacity:** 1500 GPM (94.6 lps)  
**Max. Head:** 110 feet (33.5 m)  
**Max. Solids:** 3" (76.2 mm)



**90 Series®**

**Size:** 2", 3" (50 mm, 75 mm)  
**Max. Capacity:** 318 GPM (20.1 lps)  
**Max. Head:** 184 feet (56.1 m)  
**Max. Solids:** 1/2" (12.7 mm)



**80 Series®**

**Size:** 1 1/4", 1 1/2", 2", 3", 4", 6", 8", 10"  
 (32 mm, 38 mm, 50 mm, 75 mm, 100 mm, 150 mm, 200 mm, 250 mm)  
**Max. Capacity:** 2100 GPM (132.5 lps)  
**Max. Head:** 210 feet (64.0 m)  
**Max. Solids:** 2 3/8" (60.3 mm)



**O Series®**

**Size:** 2", 3", 4", 6" (50 mm, 75 mm, 100 mm, 150 mm)  
**Max. Capacity:** 1350 GPM (85.2 lps)  
**Max. Head:** 400 feet (121.9 m)  
**Max. Solids:** 3/8" (15.9 mm)



**10 Series® Close Coupled**

**Size:** 1 1/2", 3", 4" (38 mm, 75 mm, 100 mm)  
**Max. Capacity:** 400 GPM (25.2 lps)  
**Max. Head:** 43 feet (13.1 m)  
**Max. Solids:** 3" (76.2 mm)



**80 Series® Close Coupled**

**Size:** 3/4", 1 1/4", 1 1/2" (19 mm, 32 mm, 38 mm)  
**Max. Capacity:** 92 GPM (5.8 lps)  
**Max. Head:** 70 feet (21.3 m)  
**Max. Solids:** 1/2" (12.7 mm)

### Submersible

Gorman-Rupp submersibles overcome the conventional limitation of 24-foot suction lift, making them ideal for high head, high volume applications. Widebase models are designed for open pits and quarries. Slimline models are ideal for drilled wells and narrow openings.



#### Widebase Submersibles

**Size:** 2" to 12" (50 mm to 304.8 mm)  
**Max. Capacity:** 7400 GPM (466.9 lps)  
**Max. Head:** 600 feet (182.9 m)  
**Max. Solids:** 1" (25.4 mm)  
**Horsepower:** 2 to 275 HP



#### Slimline Submersibles

**Size:** 1 1/2" to 6" (38 mm to 150 mm)  
**Max. Capacity:** 2100 GPM (132.5 lps)  
**Max. Head:** 380 feet (115.8 m)  
**Max. Solids:** 1/2" (12.7 mm)  
**Horsepower:** 1 to 60 HP



#### J Series®

**Size:** 3" to 20" (75 mm to 508 mm)  
**Max. Capacity:** 15,000 GPM (946.4 lps)  
**Max. Head:** 260 feet (79.2 m)  
**Max. Solids:** 4 1/2" (114.3 mm)  
**Horsepower:** 2.7 to 215 HP

### Diaphragm

Gorman-Rupp diaphragm pumps are designed for pumping sludges, slurries and sand-laden water. Pumps are lightweight, portable, and will automatically reprime at 15-foot suction lift. They can run dry without damage, and are available engine driven, motor driven or for use with customer supplied power.

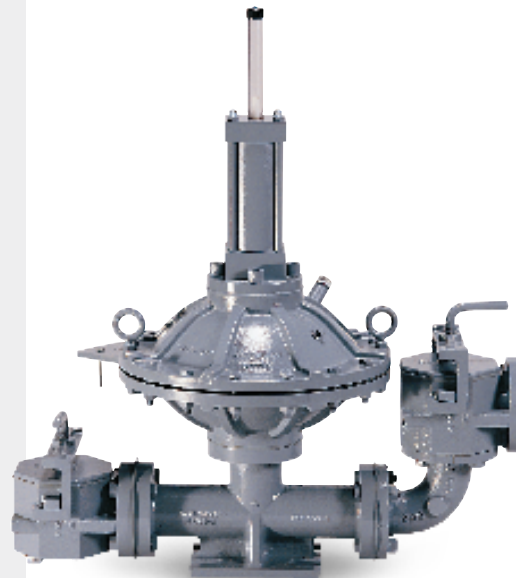


#### Diaphragm

**Size:** 2", 3", 4" (50 mm, 75 mm, 100 mm)  
**Max. Capacity:** 150 GPM (9.5 lps)  
**Max. Head:** 50 feet (15.2 m)  
**Max. Solids:** 2 1/4" (57.2 mm)

### Air Driven Diaphragm

Air driven diaphragm pumps are designed for pumping heavy-duty sludges and slurries. They are capable of operating dry, on suction lifts up to 10 feet, and handling high solids content (up to 70%). Lined units are available for highly abrasive/corrosive applications.



#### Air Driven Diaphragm

**Size:** 1 1/2" to 6" (38 mm to 150 mm)  
**Max. Capacity:** 350 GPM (22.1 lps)  
**Max. Head:** 220 feet (67.1 m)  
**Max. Solids:** 4" (100 mm)

## Standard Centrifugal

Gorman-Rupp manufactures hundreds of models of high volume, high pressure centrifugal pumps. These high efficiency pumps have few moving parts, so maintenance and service are minimal.



**50 Series®**

Size: 3" to 5" (75 mm to 125 mm)  
Max. Capacity: 1200 GPM (75.7 lps)  
Max. Head: 420 feet (128.0 m)  
Max. Solids: 1 1/4" (31.8 mm)



**60 Series®**

Size: 3" to 12" (75 mm to 300 mm)  
Max. Capacity: 6800 GPM (429 lps)  
Max. Head: 500 feet (152.4 m)  
Max. Solids: 3 1/4" (82.6 mm)



**VG Series™ & VGH Series**

Size: 3" to 12" (75 mm to 300 mm)  
Max. Capacity: 6900 GPM (435.3 lps)  
Max. Head: 500 feet (152.4 m)  
Max. Solids: 3" (76.2 mm)



**Split Case**

Size: 1 1/2" x 1" to 6" x 4"  
(38 mm x 25 mm to  
150 mm x 100 mm)  
Max. Capacity: 1550 GPM (97.8 lps)  
Max. Head: 240 feet (73.2 m)

## Power Take Off

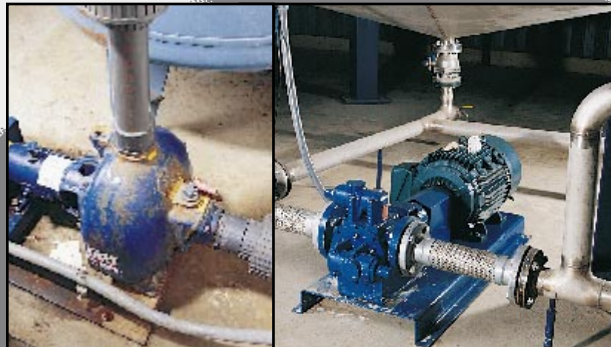
Self-priming centrifugal refueler pumps are ideal for handling aircraft fuels, fuel oil, gasoline and other petroleum derivatives. These pumps have no check valves which provide better suction performance when handling solvents, petroleum products and similar liquids.



**Power Take Off**

Size: 2", 3" (50 mm, 75 mm)  
Max. Capacity: 350 GPM (22.1 lps)  
Max. Head: 450 feet (137.2 m)

*80 Series® pump is used in a reclaim system to transfer wastewater from exterior pits to the filter tanks at an automatic car wash in Ohio, USA.*



*A 3"-180° flanged Rotary Gear pump transfers chemicals to a holding tank for mixing at a chemical processing plant*

## Rotary Gear

Positive displacement rotary gear pumps are versatile enough to handle a wide variety of pumping applications, liquids, viscosities and temperatures. They are available in a variety of drive arrangements, including close-coupled, flex-coupled, gear reducer and V-belt drive.



### GMS Series

#### Medium Duty Rotary Gear

**Size:** 1" to 6" (25 mm to 150 mm)

**Max. Capacity:** 450 GPM (28.4 lps)

**Max. Pressure:** 200 psi (14 bar)

**Max. Viscosity:** 250,000 ssu (55,000 cst)

**Max. Temperature:** -75° to 350° F

**Material of Construction:** Ductile Iron



### GHS Series

#### Heavy Duty Rotary Gear

**Size:** 1" to 6" (25 mm to 150 mm)

**Max. Capacity:** 600 GPM (37.9 lps)

**Max. Pressure:** 400 psi (28 bar)

**Max. Viscosity:** 2,000,000 ssu (440,000 cst)

**Max. Temperature:** -75° to 675° F

**Material of Construction:** Ductile Iron, Steel, Stainless Steel



### HO Series

**Size:** 3/4" (19 mm)

**Max. Capacity:** 6 GPM (.4 lps)

**Max. Pressure:** 50 psi (3.5 bar)

**Max. Viscosity:** 2,500 ssu (540 cst)

**Max. Temperature:** 0° to 120° F

**Material of Construction:** Cast Iron



### GHA Series

#### Extreme Duty Rotary Gear

**Size:** 1 1/2" to 4" (38 mm to 100 mm)

**Max. Capacity:** 146 GPM (9.2 lps)

**Max. Pressure:** 200 psi (14 bar)

**Max. Viscosity:** 250,000 ssu (55,000 cst)

**Max. Temperature:** -60° to 500° F

**Material of Construction:** Cast Iron



### GMC Series

#### Medium Duty Compact Rotary Gear

**Size:** 1" to 2" (25 mm to 50 mm)

**Max. Capacity:** 38 GPM (2.4 lps)

**Max. Pressure:** 200 psi (14 bar)

**Max. Viscosity:** 250,000 ssu (55,000 cst)

**Max. Temperature:** -50° to 400° F

**Material of Construction:** Ductile Iron



### GHC Series

#### Heavy Duty Compact Rotary Gear

**Size:** 1" to 3" (25 mm to 75 mm)

**Max. Capacity:** 295 GPM (18.6 lps)

**Max. Pressure:** 400 psi (28 bar)

**Max. Viscosity:** 2,000,000 ssu (440,000 cst)

**Max. Temperature:** -50° to 400° F

**Material of Construction:** Ductile Iron, Steel, Stainless Steel

## Engine Driven

Gorman-Rupp portable, engine-driven, self-priming centrifugal pumps are ideal for standby and emergency cleanup applications. Pumps can handle up to 3" diameter solids, depending on model. Pumps to suit other applications are also available. Optional wheel kit provides portability for easy access to the job site. Available with gasoline or diesel engines.



### Prime Aire®

**Size:** 4", 6", 10", 12" (100 mm, 150 mm, 250 mm, 305 mm)

**Max. Capacity:** 6200 GPM (391.2 lps)

**Max. Head:** 420 feet (128 m)

**Max. Solids:** 3" (76.2 mm)



### Engine Driven

**Size:** 3", 4", 6", 8", 10", 12" (75 mm, 100 mm, 150 mm, 200 mm, 250 mm, 305 mm)

**Max. Capacity:** 6200 GPM (391.2 lps)

**Max. Head:** 420 feet (128 m)

**Max. Solids:** 3" (76.2 mm)



### Engine Driven

**Size:** 1 1/2", 2", 3", 4" (38 mm, 50 mm, 75 mm, 100 mm)

**Max. Capacity:** 620 GPM (39.1 lps)

**Max. Head:** 180 feet (55 m)

**Max. Solids:** 2" (50.8 mm)

