



**PRIME-AIRE<sup>TM</sup> SERIES**  
**PUMP MODEL**  
**PA6A60-F5L**

**MANUAL**  
**PART 2 of 3**

**PARTS**  
**LIST**  
**WITH**  
**PERFORMANCE CURVE**

**THE GORMAN-RUPP COMPANY • MANSFIELD, OHIO**

GORMAN-RUPP OF CANADA LIMITED • ST. THOMAS, ONTARIO, CANADA Printed in U.S.A.



**The engine exhaust from this product contains chemicals known to the State of California to cause cancer, birth defects or other reproductive harm.**

## PERFORMANCE CURVE – SECTION A

### RECORDING MODEL AND SERIAL NUMBERS

Please record the pump model and serial number in the spaces provided below and in the separate Installation/Operation Manual accompanying your pump. Your Gorman-Rupp distributor needs this information when you require parts or service.

Pump Model: \_\_\_\_\_

Serial Number: \_\_\_\_\_

### WARRANTY INFORMATION

The pump warranty is provided as part of Gorman-Rupp's support program for customers who operate and maintain their equipment as described in this manual and other accompanying literature. Please note that should the equipment be abused or modified to change its performance beyond the original factory specifications, the warranty will become void and any claim will be denied.

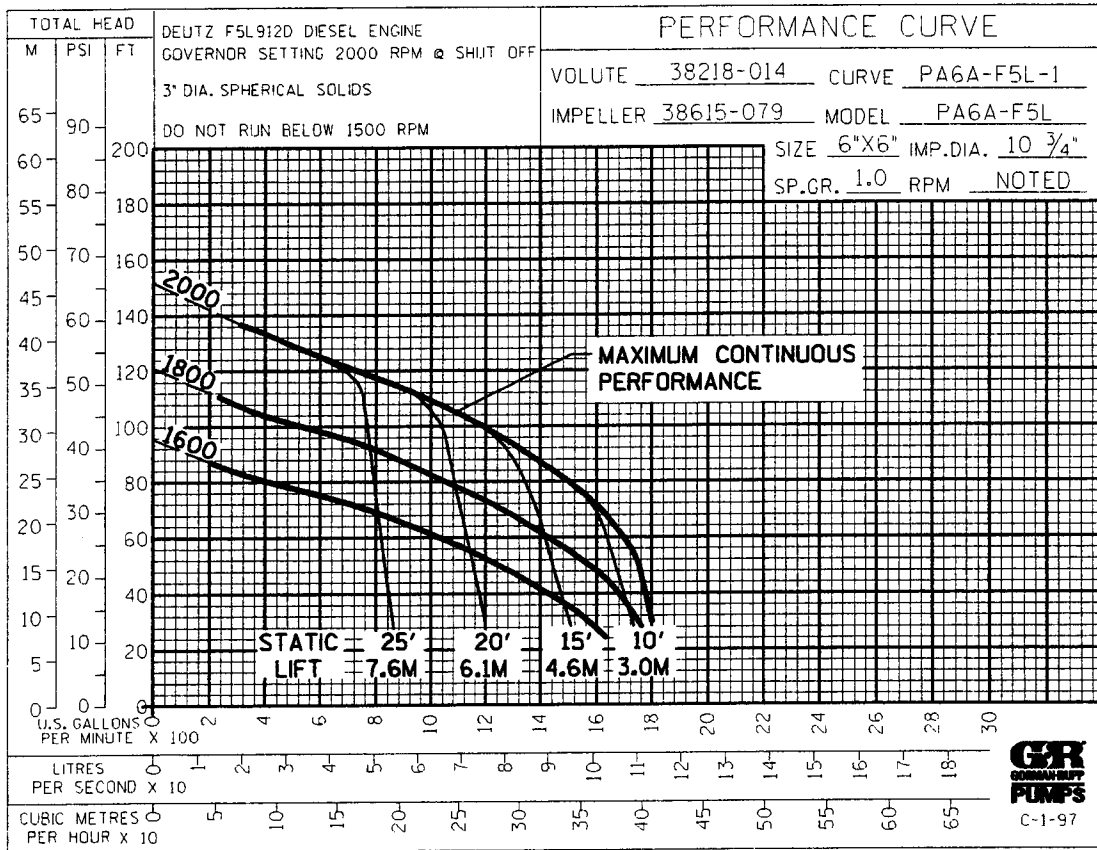
### PERFORMANCE CURVE

The performance curve on the following page is based on 70° F (21° C) clear water at sea level, corrected to 0.80 specific gravity, with minimum suction lift. Since pump installations are seldom identical, your performance may be different due to such factors as viscosity, specific gravity, elevation, temperature, and impeller trim.

If your pump serial number is followed by an "N", your pump is **NOT** a standard production model. Contact the Gorman-Rupp Company to verify performance or part numbers.



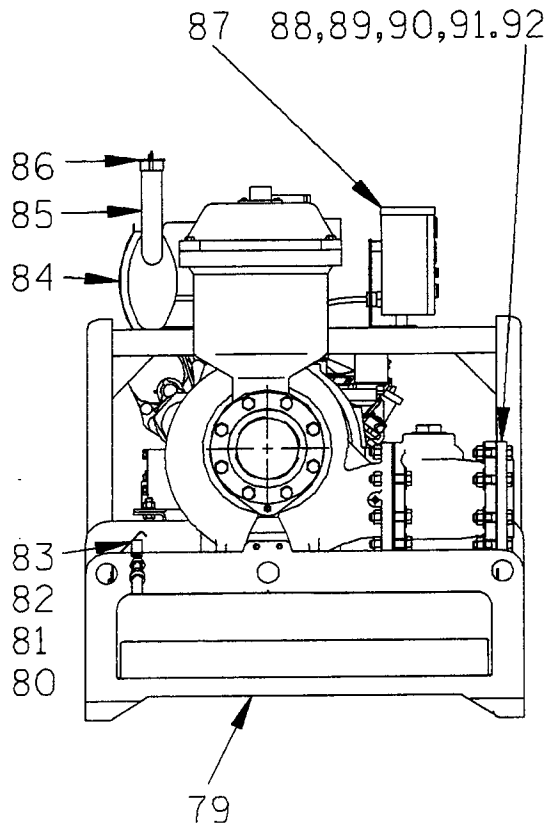
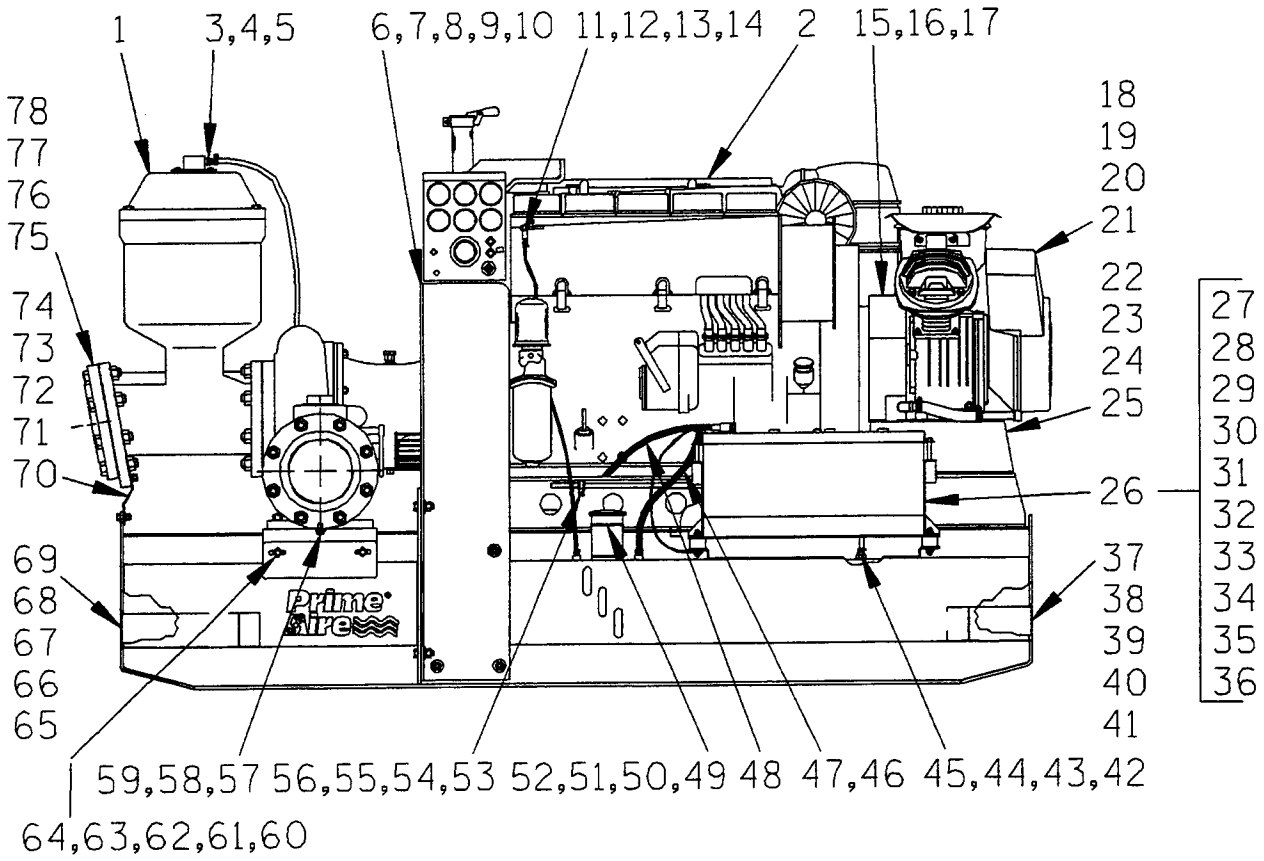
Pump speed and operating condition points must be within the continuous performance range shown on the curve.



Performance Curve – Model PA6A60–F5L

**This Page Intentionally Blank**

S/N 1109429 TO 1116557  
PUMP ISSUE 1



**THE GORMAN-RUPP COMPANY • MANSFIELD, OHIO**

GORMAN-RUPP OF CANADA LIMITED • ST. THOMAS, ONTARIO, CANADA

Printed in U.S.A.

S/N 1109429 TO 1116557  
PUMP ISSUE 1

**PARTS LIST**  
**Pump Model PA6A60-F5L**

If your pump serial number is followed by an "N", your pump is **NOT** a standard production model. Contact the Gorman-Rupp Company to verify part numbers.

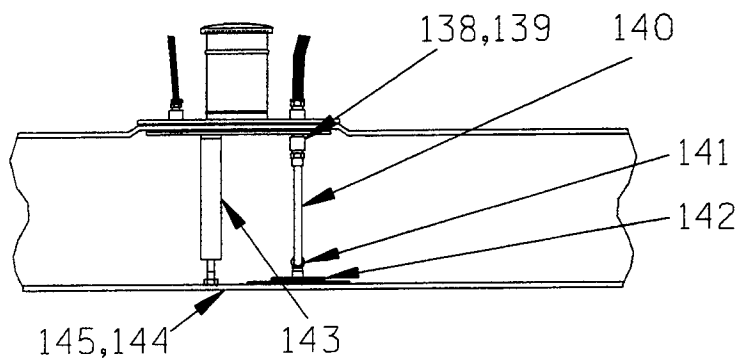
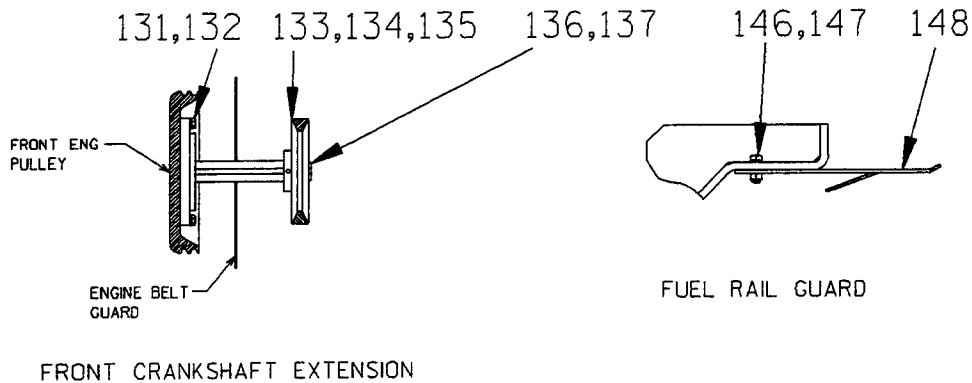
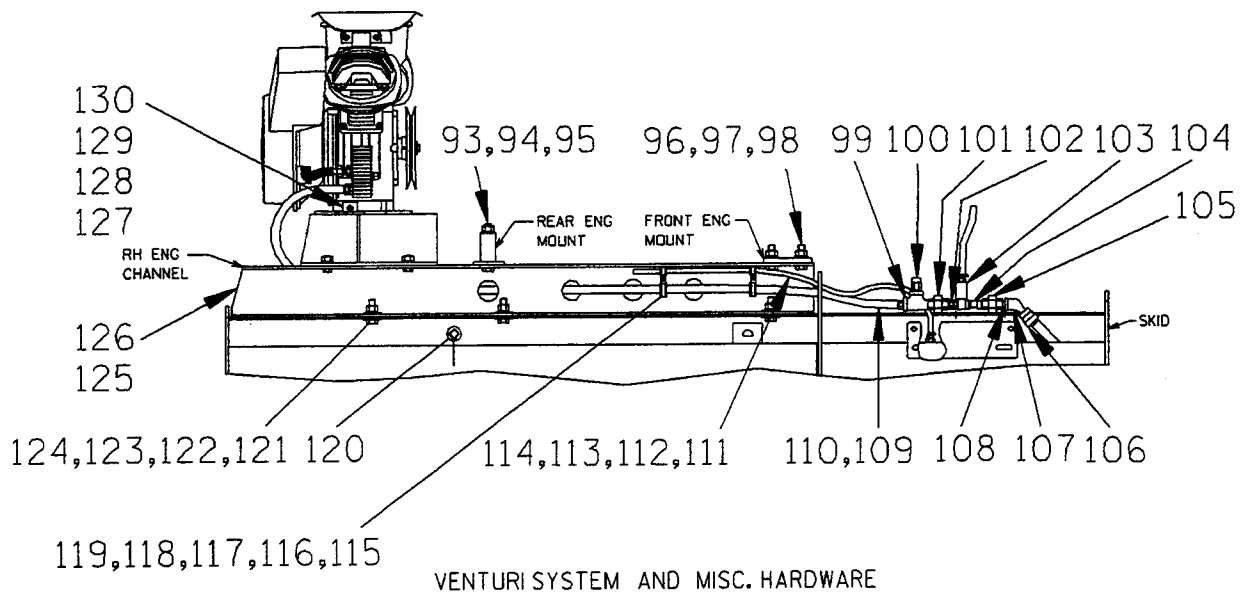
ITEM NO.	PART NAME	PART NUMBER	MAT'L CODE	QTY	ITEM NO.	PART NAME	PART NUMBER	MAT'L CODE	QTY
1	PUMP ASSEMBLY	PA6A60-(SAE 4/10)		1	47	HOSE ASSY	46341-812	---	1
2	DEUTZ F5L ENGINE	29217-061	---	1	48	POS CABLE ASSY	47311-118	---	1
3	REDUCER BUSHING	AP1608	11999	1	49	FUEL FILLNECK ASSY	46312-015	24150	1
4	MALE CONNECTOR	S1599	---	2	50	FUEL FILLER GSKT	38687-553	19020	1
5	1/2" BRAIDED HOSE (3.25')	18513-113	---	1	51	NYLON LOCK NUT	BC#10	15991	12
6	LIFTING BAIL	44711-019	24150	1	52	SEALING WASHER	25123-056	---	12
7	HEX HD CAPSCREW	B0805	15991	10	53	CABLE CLAMP	27111-339	---	1
8	HEX NUT	D08	15991	8	54	HEX HD CAPSCREW	B#10-03	15991	1
9	LOCKWASHER	J08	15991	10	55	HEX NUT	D#10	15991	1
10	FLAT WASHER	K08	15991	12	56	LOCKWASHER	J#10	15991	1
11	HOSE	11308A	---	1	57	HEX HD CAPSCREW	B0603	15991	1
12	HOSE CLAMP	26518-641	---	2	58	LOCKWASHER	J06	15991	1
13	BARB HOSE FITTING	26523-443	---	1	59	FLAT WASHER	K06	15991	1
14	BARB HOSE FITTING	26523-386	---	1	60	CHECK VALVE BRKT	34256-014	15120	1
15	A/C BELT GUARD ASSY	42353-020	---	1	61	HEX HD CAPSCREW	B0604	15991	2
16	HEX HD CAPSCREW	B0604	15991	2	62	HEX NUT	D06	15991	2
17	LOCKWASHER	J06	15991	2	63	LOCKWASHER	J06	15991	2
18	A/C COMPRESSOR ASSY	46181-902	---	1	64	FLAT WASHER	K06	15991	4
19	HEX HD CAPSCREW	B0604	15991	4	65	FUEL TANK RETAINER	41441-408	24150	1
20	LOCKWASHER	J06	15991	4	66	CARRIAGE BOLT	AB0805	15991	2
21	FLAT WASHER	K06	15991	4	67	HEX NUT	D08	15991	2
22	A/C MTG BRKT ASSY	41881-558	---	1	68	LOCKWASHER	J08	15991	2
23	HEX HD CAPSCREW	B0805	15991	4	69	FLAT WASHER	K08	15991	2
24	HEX NUT	D08	15991	4	70	PRIM CHAMBER BRKT	34535-010	15120	1
25	LOCKWASHER	J08	15991	4	71	HEX HD CAPSCREW	B0604	15991	3
26	BATTERY BOX ASSY	GRP40-08C	---	1	72	HEX NUT	D06	15991	2
27	-HEX HD CAPSCREW	B0607	15991	2	73	LOCKWASHER	J06	15991	3
28	-FLAT WASHER	K06	15991	2	74	FLAT WASHER	K06	15991	3
29	-FLANGED HEX NUT	21765-314	---	2	75	SUCTION FLANGE	1758	10010	1
30	-GRND CABLE ASSY	47311-064	---	1	76 *	SUCT FLANGE GSKT	1679G	18000	1
31	-BATTERY BOX LID	42113-012	24150	1	77	HEX HD CAPSCREW	B1212	15991	8
32	-12V BATTERY	SEE OPTIONS LIST			78	HEX NUT	D12	15991	8
33	-BATTERY TAG	38818-506	---	1	79	SKID ASSY	41565-570	24150	1
34	-BATTERY BOX	42431-030	24150	1	80	VENTURI GD ASSY	42381-067	---	1
35	-STUD MOUNT	24631-006	---	4	81	HEX HD CAPSCREW	B0504	15991	2
36	-FLANGED HEX NUT	21765-314	---	8	82	LOCKWASHER	J05	15991	2
37	A/C FUEL TANK RETAINER	41441-407	24150	1	83	FLAT WASHER	K05	15991	2
38	CARRIAGE BOLT	AB0805	15991	2	84	MUFFLER GRD ASSY	42331-033	---	1
39	HEX NUT	D08	15991	2	85	EXHAUST ELBOW	31912-024	15990	1
40	LOCKWASHER	J08	15991	2	86	RAIN CAP	S1331	---	1
41	FLAT WASHER	K08	15991	2	87	CONTROL PANEL	29277-011	---	1
42	REDUCER BUSHING	AP0602	15079	1	88	DISCHARGE FLANGE	1758	10010	1
43	BARB ELBOW	26523-502	---	1	89 *	DISCH FLANGE GSKT	1679G	18000	1
44	HOSE CLAMP	26518-641	---	1	90	HEX HD CAPSCREW	B1213	15991	8
45	1' PLASTIC TUBING	18523-366	---	1	91	HEX NUT	D12	15991	8
46	MALE CONNECTOR	S1447	---	1	92	FLAT WASHER	21161-446	---	8

\* INDICATES PARTS RECOMMENDED FOR STOCK

Above Serial Numbers Do Not Apply To Pumps Made In Canada.

CANADIAN SERIAL NO. .... AND UP

**THE GORMAN-RUPP COMPANY • MANSFIELD, OHIO**



FUEL PICK-UP SYSTEM

**THE GORMAN-RUPP COMPANY • MANSFIELD, OHIO**

GORMAN-RUPP OF CANADA LIMITED • ST. THOMAS, ONTARIO, CANADA

Printed in U.S.A.

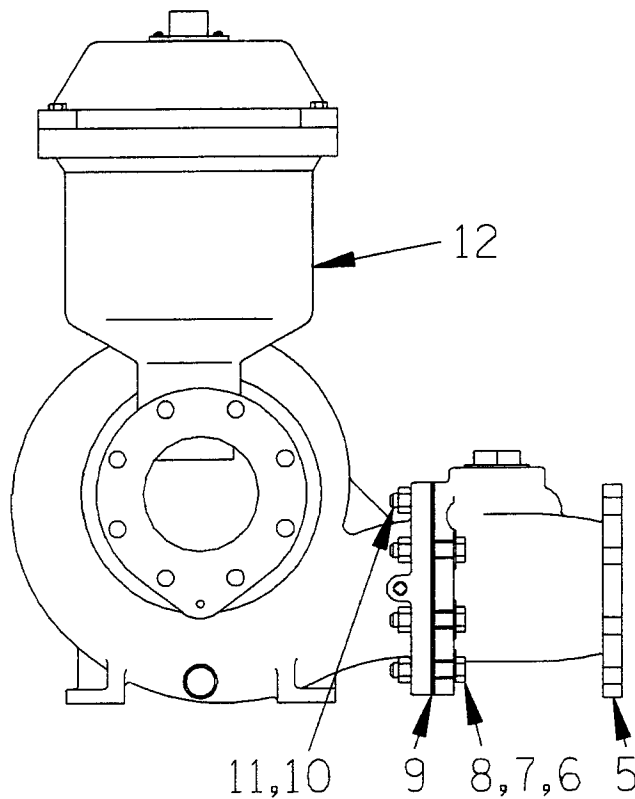
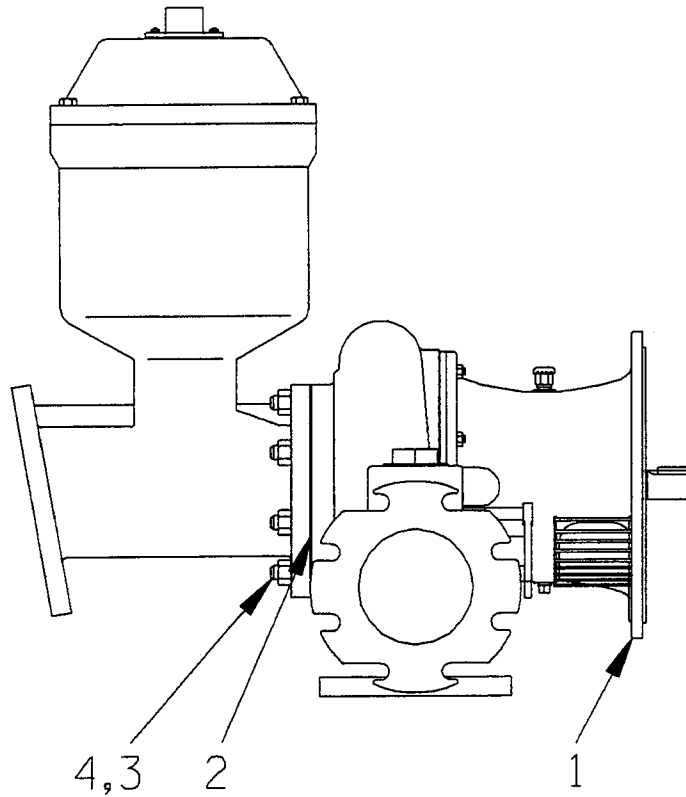


S/N 1109429 TO 1116557  
PUMP ISSUE 1

**PARTS LIST**  
**Pump Model PA6A60--F5L**

ITEM NO.	PART NAME	PART NUMBER	MAT'L CODE	QTY	ITEM NO.	PART NAME	PART NUMBER	MAT'L CODE	QTY
93	HEX HD CAPSCREW	B1017	15991	2	132	LOCKWASHER	21171-510	---	4
94	HEX NUT	D10	15991	2	133	ENGINE PULLEY	24214-002	---	1
95	LOCKWASHER	J10	15991	2	134	O.D. BUSHING	24131-549	---	1
96	HEX HD CAPSCREW	B1008	15991	4	135	V-BELT	24166-010	---	1
97	HEX NUT	D10	15991	4	136	KEY	N0405	15990	1
98	LOCKWASHER	J10	15991	4	137	FRT CRANK EXT	44148-008	24150	1
99	SERVICE TEE	US08	11999	1	138	45° ELBOW	26114-802	---	1
100	RELIEF VALVE	26662-028	---	1	139	90° MALE CONNECTOR	26171-013	---	1
101	PIPE UNION	AH08	11999	1	140	1.5' NYLON TUBE	18533-119	---	1
102	REDUCER BUSHING	AP0806	15079	1	141	90° MALE ELBOW	26171-038	---	1
103	PIPE COUPLING	AE08	15079	1	142	FUEL PICK-UP ASSY	41822-009	24150	1
104	VENTURI	26817-002	---	1	143	FUEL FILLER SUPPORT	41441-406	24150	1
105	PIPE UNION	AH08	11999	1	144	FUEL TANK	38651-001	19220	1
106	RED PIPE BUSHING	AE1208	15079	1	145	PIPE PLUG	P06	19220	1
107	45° STREET ELBOW	AGS08	11999	1	146	HEX HD CAPSCREW	B0604	15991	1
108	PIPE NIPPLE	T08	15079	1	147	LOCKWASHER	J06	15991	1
109	6.5' HOSE	18513-304	---	1	148	FUEL RAIL GUARD	42381-074	24150	1
110	BARB HOSE FITTING	26525-008	---	2					
111	REDUCER BUSHING	AP0604	15079	1		NOT SHOWN:			
112	MALE CONNECTOR	26523-386	---	1		INSTRUCTION DECAL	38818-128	---	1
113	HOSE CLAMP	26518-641	---	1		WARNING DECAL	38816-063	---	2
114	2 1/2' PLASTIC TUBING	18523-366	---	1		LUBE DECAL	38816-079	---	1
115	HEX HD CAPSCREW	B#10-03	15991	2		WARNING DECAL	38816-096	---	1
116	HEX NUT	D#10	15991	2		SUCTION STICKER	6588AG	---	1
117	LOCKWASHER	J#10	15991	2		DISCHARGE STICKER	6588BJ	---	1
118	CUSHION CABLE CLAMP	27111-346	---	2		RPM DECAL	38816-240	---	1
119	CUSHION CABLE CLAMP	27111-339	---	2		LIFT DECAL	38816-175	---	1
120	OIL DRAIN ASSY	46342-007	---	1		LIFT DECAL	38816-218	---	2
121	HEX HD CAPSCREW	B1007	15991	6		PA DECAL	38812-078	---	2
122	HEX NUT	D10	15991	6		INSTRUCTION DECAL	38816-194	---	1
123	LOCKWASHER	J10	15991	6		V-BELT TENSION DECAL	38816-049	---	1
124	FLAT WASHER	K10	15991	12		WARNING DECAL	2613FE	---	1
125	ENG SUPP CH - LH	34451-077	15080	1		ROTATION STICKER	2613M	---	1
126	ENG SUPP CH - RH	34451-076	15080	1		G-R DECAL	GR06	---	3
127	MOTOR TENSIONER	41327-031	24150	1		STRAINER	7823A	24000	1
128	HEX NUT	D08	15991	1					
129	LOCKWASHER	J08	15991	1		OPTIONAL:			
130	FLAT WASHER	K08	15991	1		12V BATTERY	29331-506	---	1
131	HEX HD CAPSCREW	22645-132	---	4					

\* INDICATES PARTS RECOMMENDED FOR STOCK

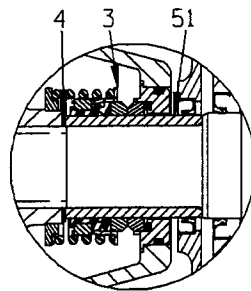


S/N 1109429 TO 1116557  
 PUMP ISSUE 1

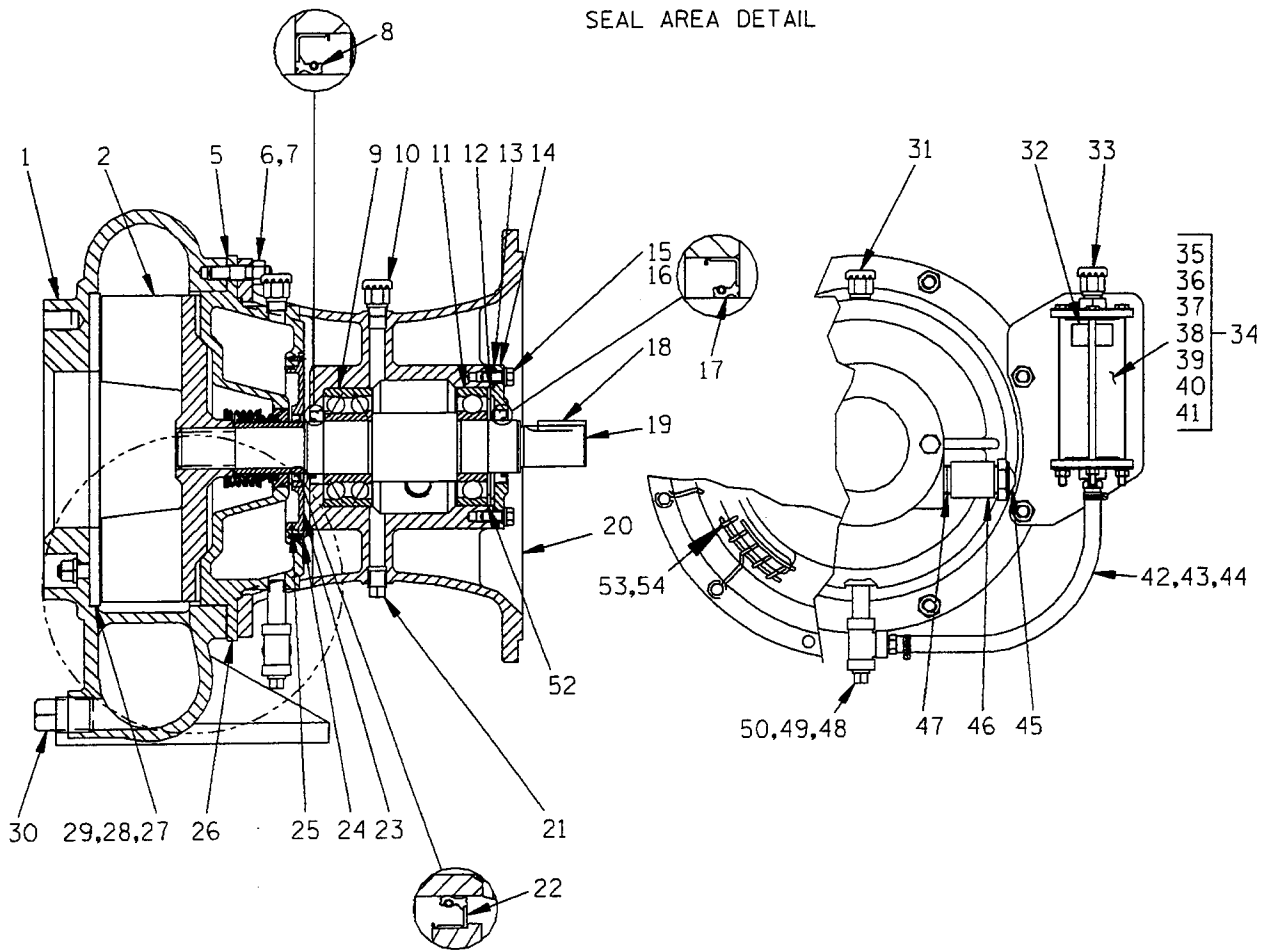
**PARTS LIST**  
**PA6A60-(SAE 4/10) Pump Assembly**

ITEM NO.	PART NAME	PART NUMBER	MAT'L CODE	QTY
1	PUMP END ASSY	66E60--(SAE4/10)	---	1
2	* PUMP CASING GSKT	1679G	18000	1
3	STUD	C1211	15991	8
4	HEX NUT	D12	15991	8
5	CHECK VALVE ASSY	46421-061	---	1
6	HEX HD CAPSCREW	B1214	15991	6
7	FLAT WASHER	21161-446	---	6
8	HEX NUT	D12	15991	6
9	* CHECK VALVE GSKT	25113-036	---	1
10	STUD	C1212	15991	2
11	HEX NUT	D12	15991	2
12	PRIMING CHAMBER ASSY	46112-703	---	1

\* INDICATES PARTS RECOMMENDED FOR STOCK



SEAL AREA DETAIL

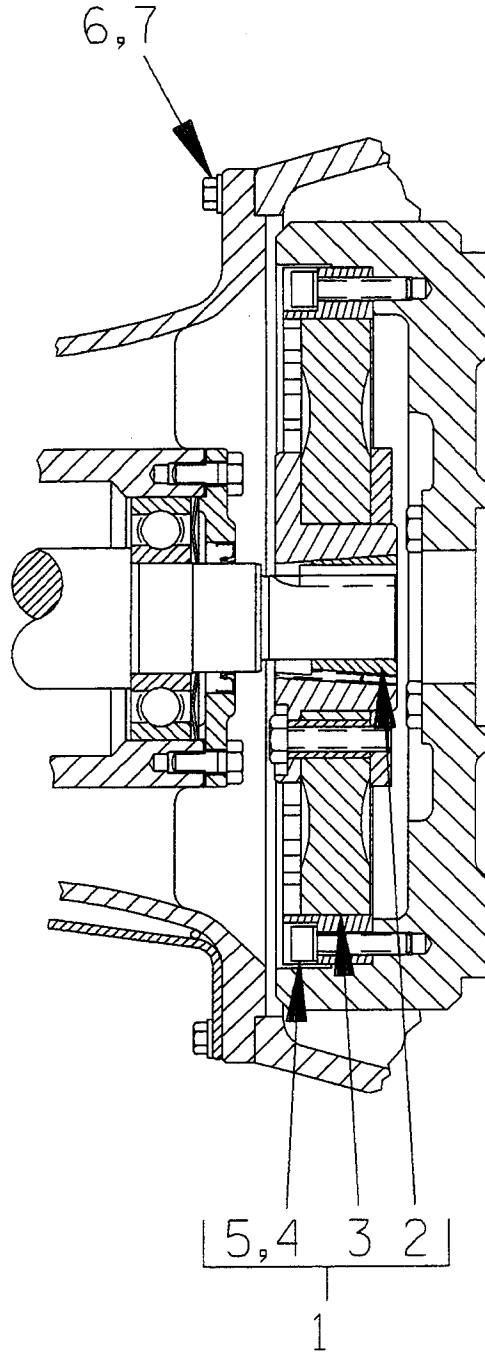


S/N 1109429 TO 1116557  
PUMP ISSUE 1

**PARTS LIST**  
**66E60-(SAE 4/10) Pump End Assembly**

ITEM NO.	PART NAME	PART NUMBER	MAT'L CODE	QTY	ITEM NO.	PART NAME	PART NUMBER	MAT'L CODE	QTY
1	PUMP CASING	38218-014	10000	1	29	LOCKWASHER	J08	15991	2
2 *	IMPELLER ASSY	46151-409	---	1	30	CASING DRAIN PLUG	P16	10009	1
	- SPRING RETAINER	31167-023	15000	1	31	AIR VENT	S1703	---	1
3 *	SEAL ASSY	46512-048	---	1	32	OIL LEVEL DECAL	38816-123	---	1
4 *	ADJ SHIM SET	5091	17090	1	33	AIR VENT	S1703	---	1
5 *	CASING GASKET SET	34G	18000	1	34	SIGHT GAUGE ASSY	46353-045	---	1
6	STUD	C0809	15991	8	35	- LOWER COVER	26846-501	---	2
7	HEX NUT	D08	15991	8	36	- SUPPORT ASSY	41881-555	24150	1
8 *	OIL SEAL	25258-622	---	1	37	- HEX HD CAPSCREW	B0426	15991	3
9 *	INBOARD BALL BEARING	23421-461	---	1	38	- HEX NUT	D04	15991	3
10	AIR VENT	S1703	---	1	39	- LOCKWASHER	J04	15991	3
11 *	OUTBOARD BALL BRG	S1077	---	1	40 *	- CHAMBER GSKT	38681-204	20000	2
12 *	THRUST WASHER	31133-197	15210	1	41	- SIGHT CHAMBER	26846-502	---	1
13 *	BRG COVER GSKT	5413G	18000	1	42	MALE CONNECTOR	26523-409	---	2
14	BEARING CAP	4185A	10010	1	43	HOSE	18513-054	---	1
15	HEX HD CAPSCREW	B0604	15991	4	44	HOSE CLAMP	26518-642	---	2
16	LOCKWASHER	J06	15991	4	45	OIL LVL SIGHT GAUGE	S1471	---	1
17 *	OIL SEAL	25258-622	---	1	46	PIPE COUPLING	AE12	15079	1
18 *	IMP SHAFT KEY	N0607	15990	1	47	PIPE NIPPLE	T12	15079	1
19 *	IMPELLER SHAFT	38514-807	1706H	1	48	PIPE NIPPLE	T0608	15079	1
20	INTERMEDIATE	38263-614	10010	1	49	PIPE TEE	U06	11999	1
21	BRG CAVITY DRAIN PLUG	P06	15079	1	50	SEAL CVTY DRAIN PLUG	P06	15079	1
22 *	OIL SEAL	25258-620	---	1	51 *	SHAFT SLEEVE	31163-016	1706H	1
23	SEAL PLATE COVER	38242-707	10000	1	52 *	BRG SHIM SET	8546	15990	1
24	FH MACHINE SCREW	Y#10-02	15991	4	53	INTERMEDIATE GUARD	42381-031	24150	1
25 *	SEAL PLT COVER O-RING	25152-256	---	1	54	INTERMEDIATE GUARD	42381-032	24150	1
26	SEAL PLATE	38272-527	10000	1		NOT SHOWN:			
27 *	WEAR PLATE ASSY	46451-746	24150	1		PIPE PLUG	P06	15079	2
28	HEX NUT	D08	15991	2		DRIVE ASSY	44162-119	---	1
						PIPE PLUG	P04	15079	1

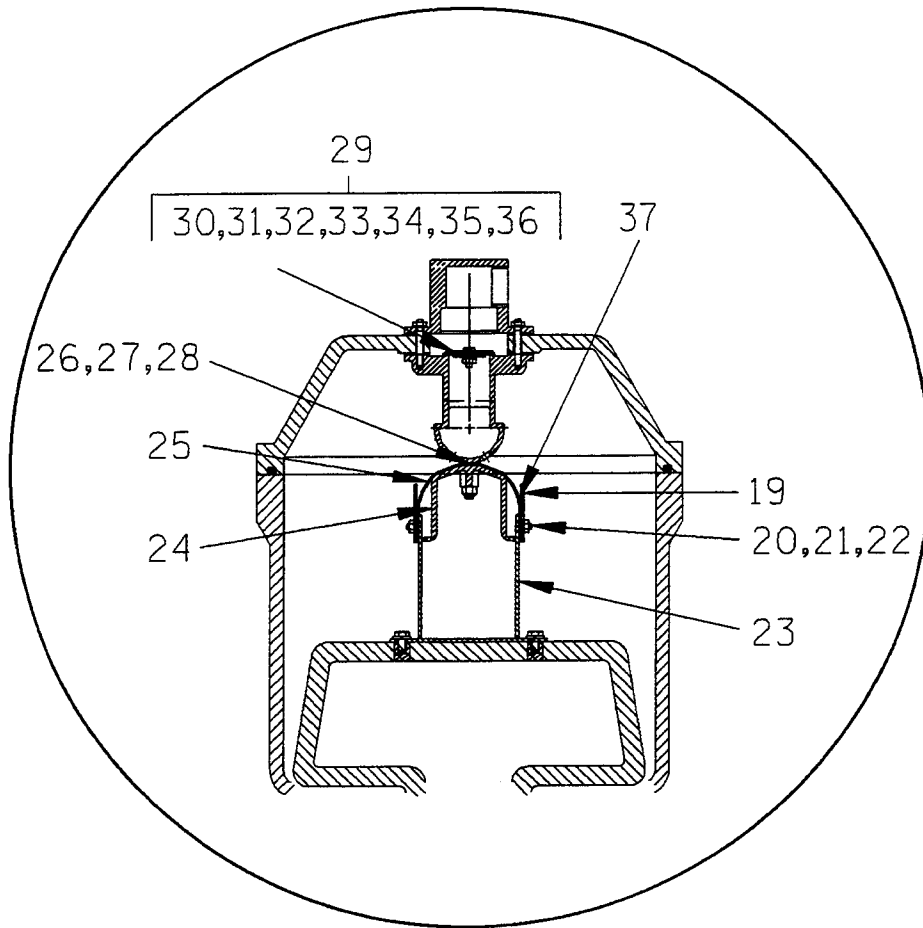
\* INDICATES PARTS RECOMMENDED FOR STOCK



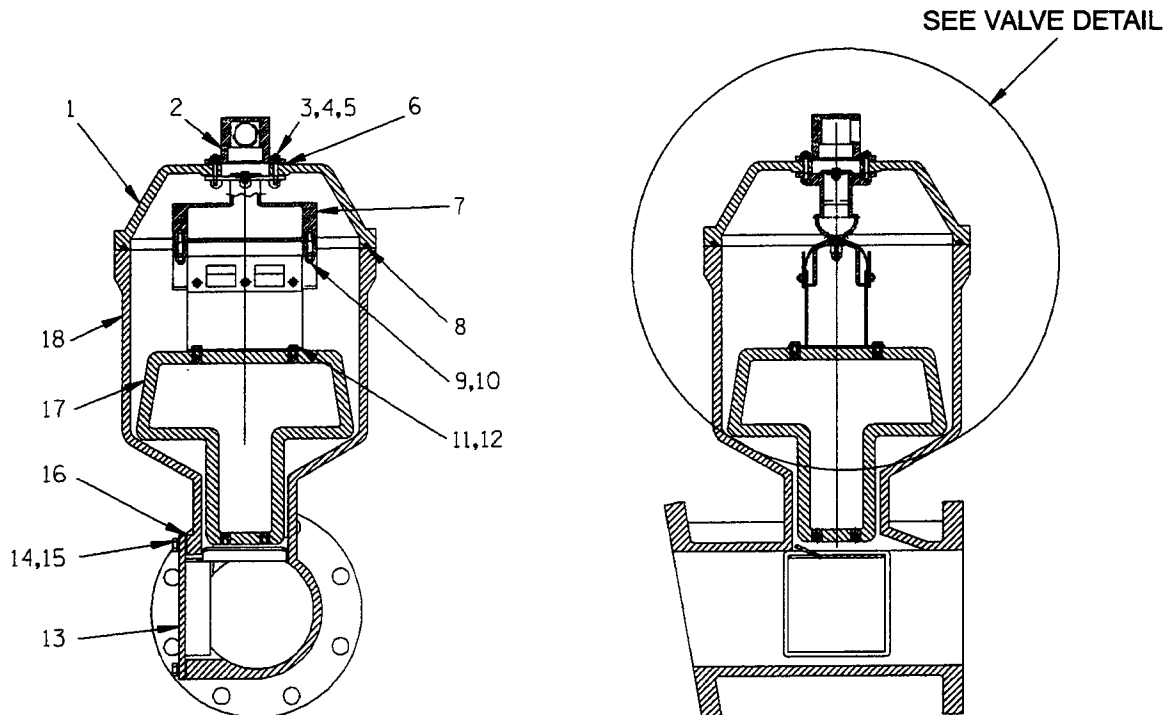
S/N 1109429 TO 1116557  
 PUMP ISSUE 1

**PARTS LIST**  
**(SAE 4/10) Drive Assembly**

ITEM NO.	PART NAME	PART NUMBER	MAT'L CODE	QTY
1	COUPLING KIT	48112-001	-----	1
2	-BUSHING	24131-345	-----	1
3	-COUPLING ASSEMBLY	44165-011	-----	1
4	-LOCKWASHER	21171-536	-----	8
5	-SOCKET HD CAPSCREW	22644-220	-----	8
6	HEX HD CAPSCREW	22645-164	-----	12
7	LOCKWASHER	21171-511	-----	12



VALVE DETAIL



**THE GORMAN-RUPP COMPANY • MANSFIELD, OHIO**

GORMAN-RUPP OF CANADA LIMITED • ST. THOMAS, ONTARIO, CANADA

Printed in U.S.A.

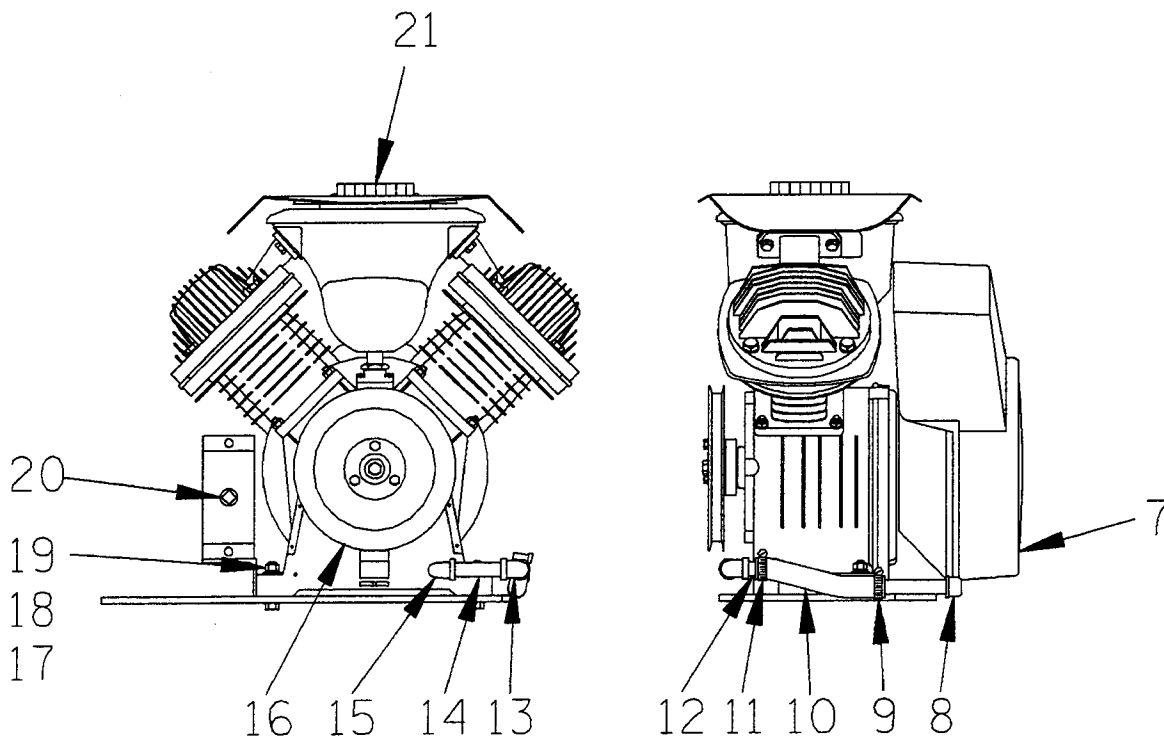
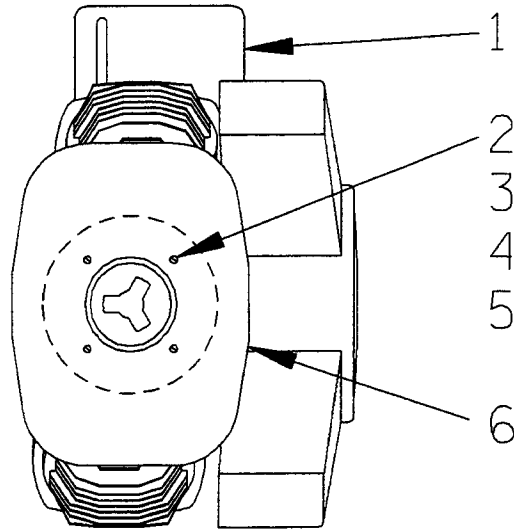


S/N 1109429 TO 1116557  
PUMP ISSUE 1

**PARTS LIST**  
**46112-703 Peeler Type Priming Valve**

ITEM NO.	PART NAME	PART NUMBER	MAT'L CODE	QTY	ITEM NO.	PART NAME	PART NUMBER	MAT'L CODE	QTY
1	PRIMING CHAMBER LID	38346-613	13000	1	21	LOCKWASHER	J#10	17000	6
2	PEELER VALVE NECK	38349-410	10000	1	22	HEX NUT	D#10	17000	6
3	LOCKWASHER	J#10	17000	4	23	VLV STRAP BRKT ASSY	41881-523	2415X	1
4	HEX NUT	D#10	17000	4	24	CLAMP PLATE	38349-406	14000	1
5	STUD	21332-038	---	4	25	VALVE STRAP	33276-041	19000	1
6 *	NECK GASKET	38683-266	19020	1	26	ADJ SHIM (IF REQ'D)	1868A	17000	2
7	VALVE BODY	38343-014	14000	1	27	ADJ SHIM (IF REQ'D)	1868B	17000	2
8 *	GASKET STRIP-42" LG	18515-031	---	1	28	ADJ SHIM (IF REQ'D)	1868C	17000	2
9	STUD	C0406 1/2	17000	2	29	CHECK VALVE ASSY	46411-112	---	1
10	HEX LOCK NUT	BC04	17000	2	30 *	- CHECK VALVE	38671-413	19020	1
11	HEX HD CAPSCREW	B0403	17000	4	31	- LOCKWASHER	J#10	17000	1
12	LOCKWASHER	J04	17000	4	32	- HEX NUT	D#10	17000	1
13	INDUCTOR GUARD ASSY	42381-066	24150	1	33	- SMALL VALVE WEIGHT	21161-810	---	1
14	HEX HD CAPSCREW	B0603	15991	4	34	- HEX HD CAPSCREW	B#10-02	17000	1
15	LOCKWASHER	J06	15991	4	35	- LARGE VALVE WEIGHT	21161-811	---	1
16 *	CHAMBER GSKT	38687-552	18000	1	36	- SEALING WASHER	S1590	---	1
17 *	PRIMING VALVE FLOAT	38349-404	19220	1	37	VLV STRAP PROTECTOR	33271-019	19000	2
18	PRIMING CHAMBER	38343-017	10000	1	NOT SHOWN:				
19	GUIDE PLATE	33522-009	17000	2		HEX HD CAPSCREW	B0807	15991	4
20	FLAT HD CAPSCREW	F#10-03	17000	6		PIPE PLUG	P04	15079	1

\* INDICATES PARTS RECOMMENDED FOR STOCK



**THE GORMAN-RUPP COMPANY • MANSFIELD, OHIO**

GORMAN-RUPP OF CANADA LIMITED • ST. THOMAS, ONTARIO, CANADA

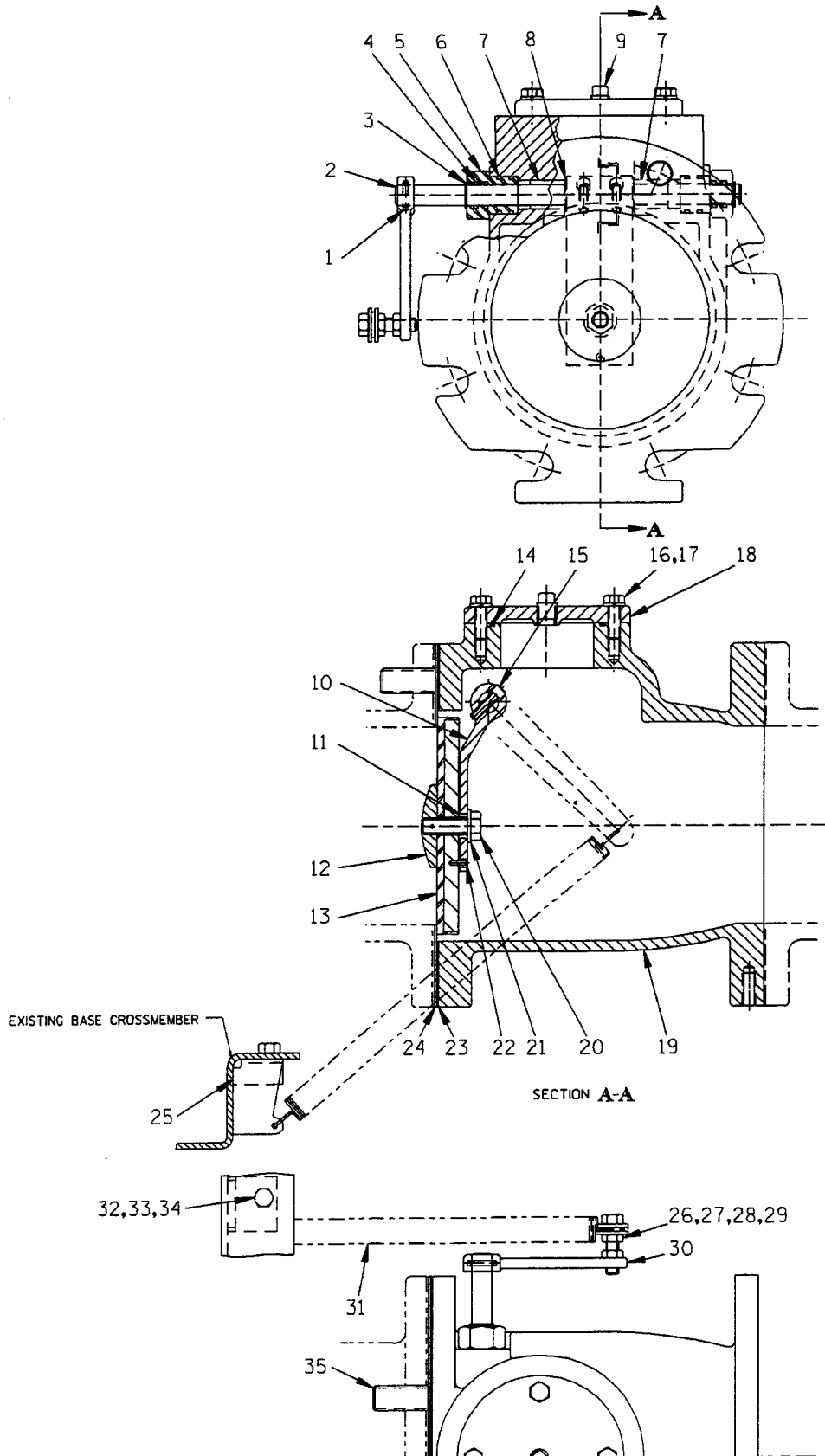
Printed in U.S.A.

S/N 1109429 TO 1116557  
PUMP ISSUE 1

**PARTS LIST**  
**46181-902 Air Compressor Assembly**

ITEM NO.	PART NAME	PART NUMBER	MAT'L CODE	QTY
1	AIR COMPRESSOR MOUNTING PLATE	41881-554	24150	1
2	MACHINE SCREW	X#10-02	15991	4
3	HEX NUT	D#10	15991	4
4	LOCKWASHER	J#10	15991	4
5	FLAT WASHER	K#10	15991	4
6	AIR COMPRESSOR COVER	38354-043	15120	1
7	ATLAS COPCO AIR COMPRESSOR	26813-111	---	1
8	PIPE CAP	V06	15079	1
9	HOSE CLAMP	26518-683	---	1
10	HOSE	18513-304	---	1
11	HOSE CLAMP	26518-683	---	1
12	PIPE NIPPLE	2434	15070	1
13	PIPE ELBOW	R06	11999	1
14	PIPE NIPPLE	T0611	15079	1
15	STREET ELBOW	RS06	11999	1
16	AIR COMPRESSOR PULLEY	44112-001	---	1
17	HEX NUT	D06	15991	4
18	LOCKWASHER	J06	15991	4
19	FLAT WASHER	K06	15991	4
20	PIPE PLUG	P08	15079	1
21	AIR COMPRESSOR KNOB	38429-501	19220	1

S/N 1109429 TO 1116557  
PUMP ISSUE 1



**THE GORMAN-RUPP COMPANY • MANSFIELD, OHIO**

GORMAN-RUPP OF CANADA LIMITED • ST. THOMAS, ONTARIO, CANADA

Printed in U.S.A.

S/N 1109429 TO 1116557  
PUMP ISSUE 1

**PARTS LIST**  
**46421-061 Check Valve Assembly**

ITEM NO.	PART NAME	PART NUMBER	MAT'L CODE	QTY
1	* GROOVE PIN	21142-557	---	1
2	SHAFT	31671-004	1706H	1
3	SNAP RING	S668	---	2
4	* SHAFT O-RING	25152-114	---	4
5	SHAFT NUT	31871-064	14100	2
6	* SHAFT NUT O-RING	25152-119	---	4
7	* BUSHING	23181-153	---	2
8	SHIM	513A-3	17090	4
9	PIPE PLUG	P04	15079	1
10	VALVE ARM	38122-003	17070	1
11	SPACER	31133-218	17080	1
12	VALVE WEIGHT	11588	10010	1
13	* MOLDED CHECK VALVE	46411-098	24010	1
14	* COVER O-RING	25152-152	---	1
15	SOCKET HD CAPSCREW	BD0504	17000	2
16	HEX HD CAPSCREW	B0604	15991	4
17	LOCKWASHER	J06	15991	4
18	VALVE INSPECTION COVER	38346-614	10010	1
19	VALVE BODY	38341-501	10010	1
20	NYLOCK CAPSCREW	BT0806	15991	1
21	FLAT WASHER	KE08	15991	1
22	* GROOVE PIN	21142-150	---	1
23	* CHECK VALVE GASKET	25113-097	---	1
24	* SEAT	31265-042	17050	1
25	SPRING ANCHOR	34325-015	15120	1
26	JAM NUT	AT06	15991	2
27	HEX HD CAPSCREW	B0606	15991	1
28	FLAT WASHER	K06	15991	2
29	SPACER	31133-217	15000	1
30	HANDLE	38582-021	11060	1
31	* SPRING	24641-015	---	1
32	HEX HD CAPSCREW	B0604	15991	1
33	HEX NUT	D06	15991	1
34	LOCK WASHER	J06	15991	1
35	STUD	C1212	15991	2

## OPTIONAL:

CHECK VALVE FLAPPER	46411-116	24010	1
---------------------	-----------	-------	---

\* INDICATES PARTS RECOMMENDED FOR STOCK

**THE GORMAN-RUPP COMPANY • MANSFIELD, OHIO**

16 of 16

GORMAN-RUPP OF CANADA LIMITED • ST. THOMAS, ONTARIO, CANADA

Printed in U.S.A.

Page 64.6 A5 REV. C 07/08/97

© Copyright by the Gorman-Rupp Company

06/01/97

**For U.S. and International Warranty Information,  
Please Visit [www.grpumps.com/warranty](http://www.grpumps.com/warranty)  
or call:  
U.S.: 419-755-1280  
International: +1-419-755-1352**

**For Canadian Warranty Information,  
Please Visit [www.grcanada.com/warranty](http://www.grcanada.com/warranty)  
or call:  
519-631-2870**