

Use With: OM-04402
MR-04821

PUBLICATION NUMBER PL-04641-05
March 26, 2002



PRIME-AIRETM SERIES
PUMP MODEL
PA6A60-F5L

MANUAL
PART 2 of 3

PARTS
LIST
WITH
PERFORMANCE CURVE

THE GORMAN-RUPP COMPANY • MANSFIELD, OHIO

GORMAN-RUPP OF CANADA LIMITED • ST. THOMAS, ONTARIO, CANADA Printed in U.S.A.

©Copyright by the Gorman-Rupp Company



The engine exhaust from this product contains chemicals known to the State of California to cause cancer, birth defects or other reproductive harm.

PERFORMANCE CURVE – SECTION A

RECORDING MODEL AND SERIAL NUMBERS

Please record the pump model and serial number in the spaces provided below and in the separate Installation/Operation Manual accompanying your pump. Your Gorman-Rupp distributor needs this information when you require parts or service.

Pump Model: _____

Serial Number: _____

WARRANTY INFORMATION

The pump warranty is provided as part of Gorman-Rupp's support program for customers who operate and maintain their equipment as described in this manual and other accompanying literature. Please note that should the equipment be abused or modified to change its performance beyond the original factory specifications, the warranty will become void and any claim will be denied.

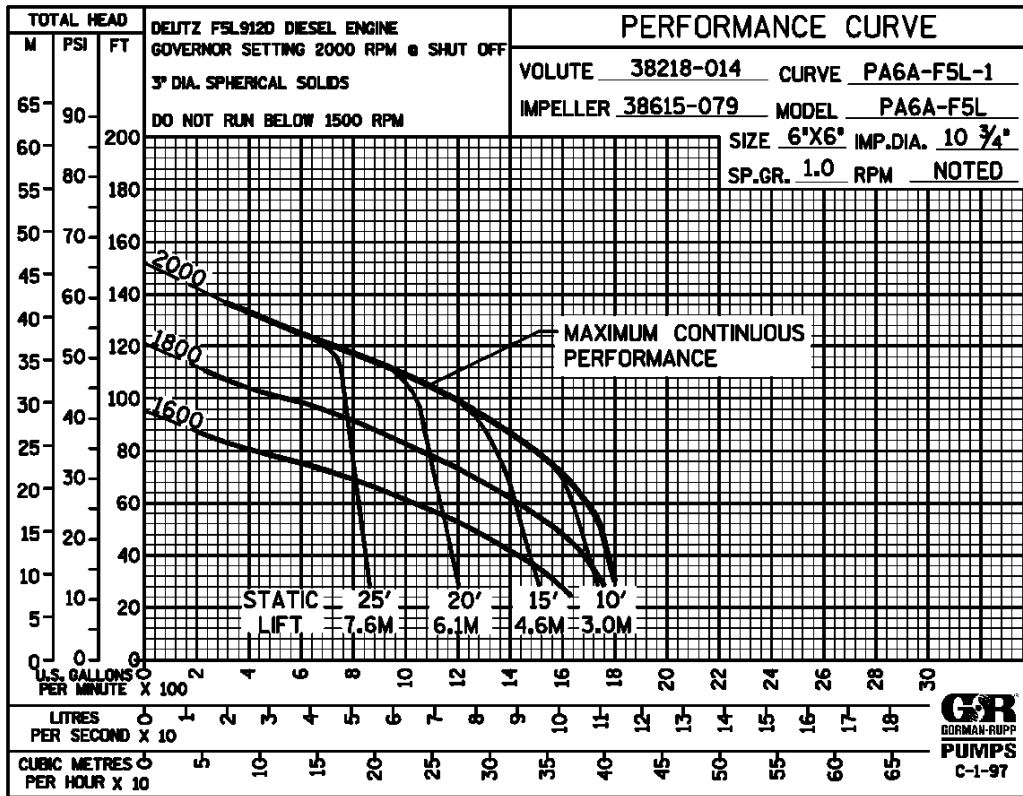
PERFORMANCE CURVE

The performance curve on the following page is based on 70° F (21° C) clear water at sea level, corrected to 0.80 specific gravity, with minimum suction lift. Since pump installations are seldom identical, your performance may be different due to such factors as viscosity, specific gravity, elevation, temperature, and impeller trim.

If your pump serial number is followed by an "N", your pump is **NOT** a standard production model. Contact the Gorman-Rupp Company to verify performance or part numbers.

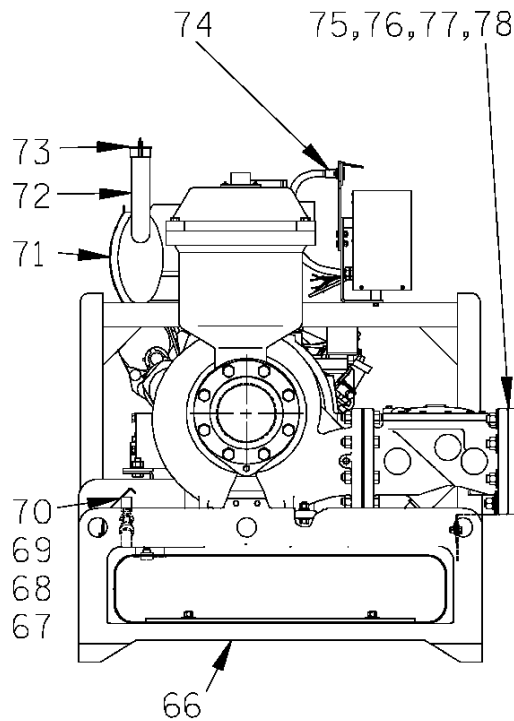
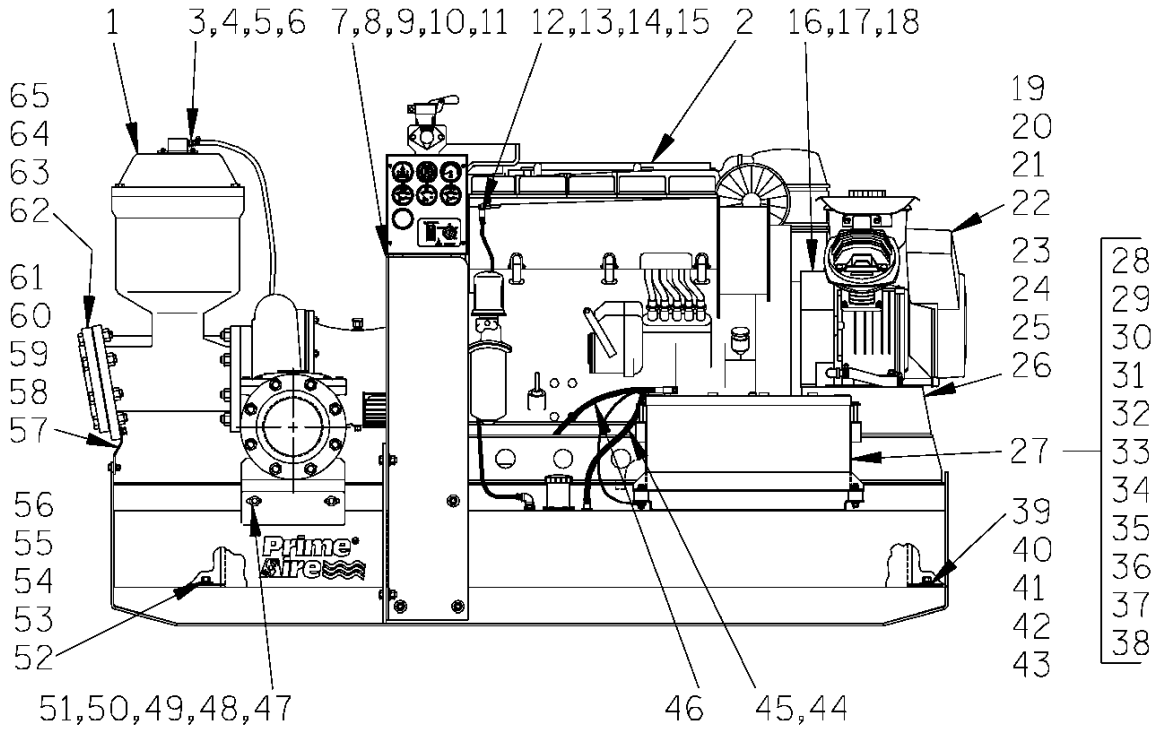


Pump speed and operating condition points must be within the continuous performance range shown on the curve.



Performance Curve – Model PA6A60-F5L

This Page Intentionally Blank



THE GORMAN-RUPP COMPANY • MANSFIELD, OHIO

GORMAN-RUPP OF CANADA LIMITED • ST. THOMAS, ONTARIO, CANADA Printed in U.S.A.

March 26, 2002

©Copyright by the Gorman-Rupp Company

1 of 14

Page 64.6 A5

**PARTS LIST
Pump Model PA6A60-F5L**

If your pump serial number is followed by an "N", your pump is **NOT** a standard production model. Contact the Gorman-Rupp Company to verify part numbers.

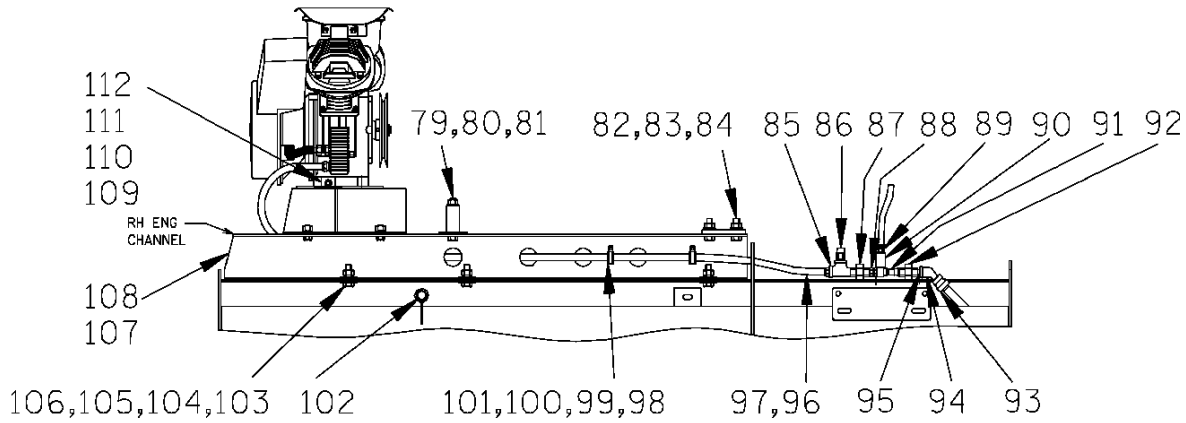
ITEM NO.	PART NAME	PART NUMBER	MAT'L CODE	QTY	ITEM NO.	PART NAME	PART NUMBER	MAT'L CODE	QTY
1	PUMP ASSEMBLY	PA6A60-(SAE 4/10)		1	40	HEX HD CAP SCREW	B0806	15991	2
2	DEUTZ F5L ENGINE	29217-061	----	1	41	HEX NUT	D08	15991	2
3	REDUCER BUSHING	AP1608	11999	1	42	LOCKWASHER	J08	15991	2
4	HOSE BARB FITTING	26523-047	----	1	43	FLAT WASHER	K08	15991	2
5	CONNECTOR	S1598	----	1	44	MALE CONNECTOR	S1447	----	1
6	HOSE	18513-113	----	1	45	HOSE ASSY	46341-812	----	1
7	LIFTING BAIL	44711-019	24150	1	46	CABLE ASSY	47311-118	----	1
8	HEX HD CAPSCREW	B0805	15991	10	47	CHECK VALVE BRKT	34518-017	15120	1
9	HEX NUT	D08	15991	8	48	HEX HD CAPSCREW	B0604	15991	2
10	LOCKWASHER	J08	15991	10	49	HEX NUT	D06	15991	2
11	FLAT WASHER	K08	15991	12	50	LOCKWASHER	J06	15991	2
12	HOSE	11308A	----	1	51	FLAT WASHER	K06	15991	4
13	HOSE CLAMP	26518-641	----	2	52	FUEL TANK RETAINER	33541-039	15120	1
14	BARB HOSE FITTING	26523-443	----	1	53	HEX HD CAPSCREW	B0806	15991	2
15	BARB HOSE FITTING	26523-386	----	1	54	HEX NUT	D08	15991	2
16	BELT GUARD ASSY	42353-020	----	1	55	LOCKWASHER	J08	15991	2
17	HEX HD CAPSCREW	B0604	15991	2	56	FLAT WASHER	K08	15991	2
18	LOCKWASHER	J06	15991	2	57	PRIM CHAMBER BRKT	34535-010	15120	1
19	A/C COMPRESSOR ASSY	46181-902	----	1	58	HEX HD CAPSCREW	B0604	15991	3
20	HEX HD CAPSCREW	B0604	15991	4	59	HEX NUT	D06	15991	2
21	LOCKWASHER	J06	15991	4	60	LOCKWASHER	J06	15991	3
22	FLAT WASHER	K06	15991	4	61	FLAT WASHER	K06	15991	3
23	A/C MTG BRKT ASSY	41881-557	24150	1	62	SUCTION FLANGE	1758	10010	1
24	HEX HD CAPSCREW	B0805	15991	4	63	*GASKET	1679G	18000	1
25	HEX NUT	D08	15991	4	64	HEX HD CAPSCREW	B1212	15991	8
26	LOCKWASHER	J08	15991	4	65	HEX NUT	D12	15991	8
27	BATTERY BOX ASSY	GRP40-08C	----	1	66	SKID ASSY	41585-570	24150	1
28	-HEX HD CAPSCREW	B0607	15991	2	67	VENTURI GD ASSY	42381-067	----	1
29	-FLAT WASHER	K06	15991	2	68	HEX HD CAPSCREW	B0504	15991	2
30	-FLANGED HEX NUT	21765-314	----	2	69	LOCKWASHER	J05	15991	2
31	-GRND CABLE ASSY	47311-064	----	1	70	FLAT WASHER	K05	15991	2
32	-BATTERY BOX LID	42113-012	24150	1	71	MUFFLER GRD ASSY	42331-033	----	1
33	-12V BATTERY	29331-506	----	1	72	EXHAUST ELBOW	31912-024	15990	1
34	-BATTERY TAG	38818-506	----	1	73	RAIN CAP	S1246	----	1
35	-BATTERY BOX ASSY	42431-030	24150	1	74	CONTROL PANEL KIT	48122-508	----	1
36	-STUD MOUNT	24631-006	----	4	75	DISCHARGE FLANGE	1758	10010	1
37	-FLANGED HEX NUT	21765-314	----	8	76	*GASKET	1679G	18000	1
38	-T-TYPE LK WASHER	BL06	15991	1	77	HEX HD CAPSCREW	B1213	15991	6
39	FUEL TANK RET	33541-039	15120	1	78	HEX NUT	D12	15991	6

* INDICATES PARTS RECOMMENDED FOR STOCK

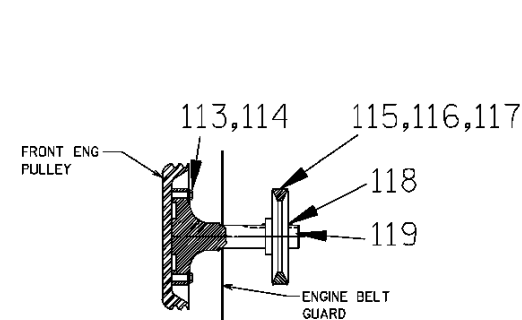
THE GORMAN-RUPP COMPANY • MANSFIELD, OHIO

GORMAN-RUPP OF CANADA LIMITED • ST. THOMAS, ONTARIO, CANADA

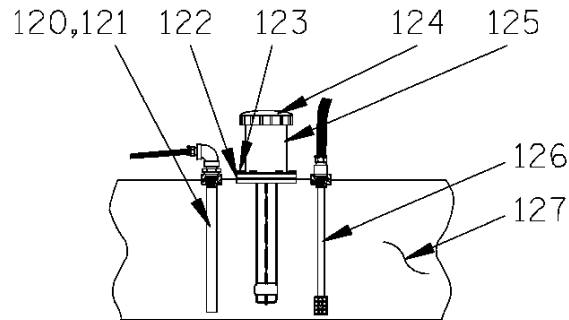
Printed in U.S.A.



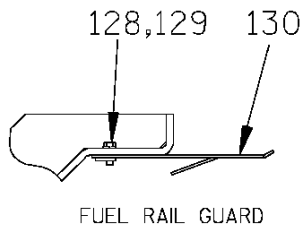
VENTURI SYSTEM AND MISC. HARDWARE



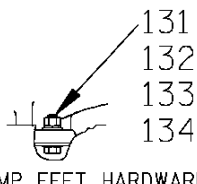
FRONT ENGINE CRANKSHAFT EXTENSION ASS'Y.



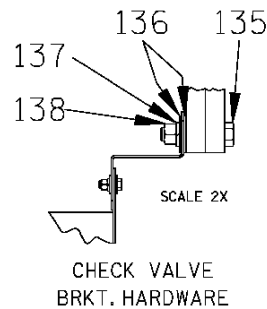
FUEL PICK-UP SYSTEM



FUEL RAIL GUARD



PUMP FEET HARDWARE



CHECK VALVE
BRKT. HARDWARE

THE GORMAN-RUPP COMPANY • MANSFIELD, OHIO

GORMAN-RUPP OF CANADA LIMITED • ST. THOMAS, ONTARIO, CANADA

Printed in U.S.A.

March 26, 2002

©Copyright by the Gorman-Rupp Company

3 of 14

Page 64.6 A5

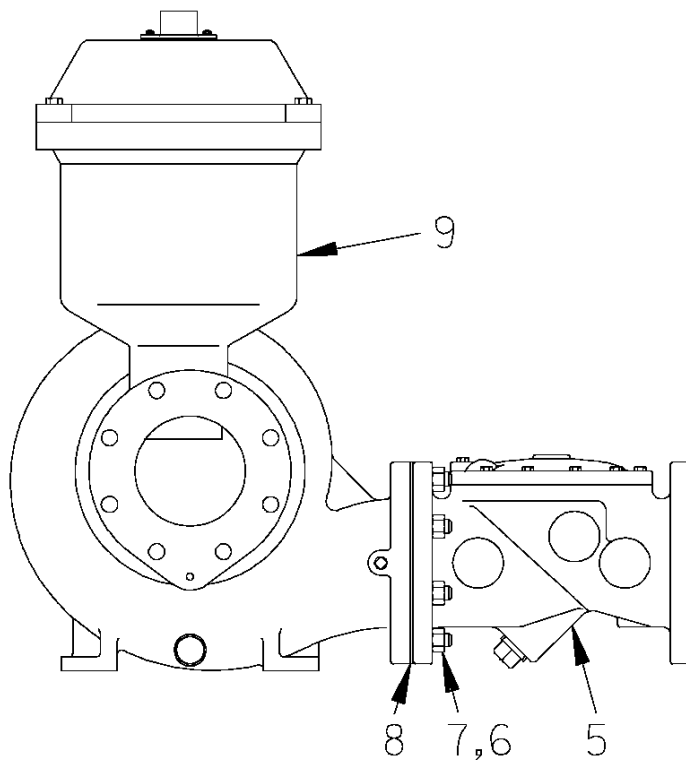
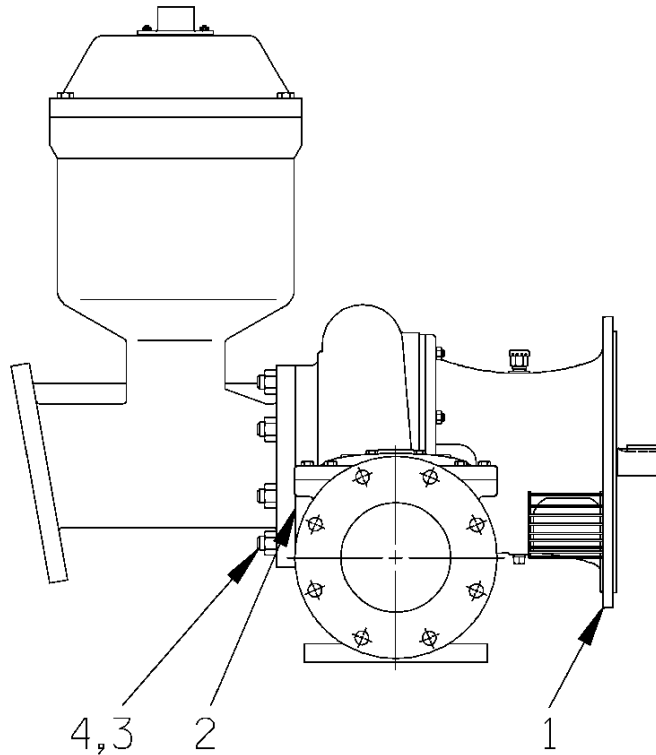
**PARTS LIST
Pump Model PA6A60-F5L**

ITEM NO.	PART NAME	PART NUMBER	MAT'L CODE	QTY	ITEM NO.	PART NAME	PART NUMBER	MAT'L CODE	QTY
79	HEX HD CAPSCREW	B1017	15991	2	117	V-BELT	24166-011	---	1
80	HEX NUT	D10	15991	2	118	KEY	N0405	15990	1
81	LOCKWASHER	J10	15991	2	119	CRANK SHAFT EXT	38531-009	11010	1
82	HEX HD CAPSCREW	B1008	15991	4	120	FUEL RETURN ASSY	46331-015	24150	
83	HEX NUT	D10	15991	4	121	PIPE ELBOW	R04	11999	1
84	LOCKWASHER	J10	15991	4	122	FILLER NECK GSKT	38683-269	19060	1
85	SERVICE TEE	US08	11999	1	123	HEX HD CAPSCREW	B#10-025	15991	6
86	RELIEF VALVE	26662-028	---	1	124	FUEL GAUGE/CAP	29332-108	---	1
87	PIPE UNION	AH08	11999	1	125	FILLER NECK	29332-152	---	1
88	REDUCER BUSHING	AP0806	15079	1	126	FUEL PICK-UP	29332-143	---	1
89	MALE HOSE END	26525-020	---	1	127	FUEL TANK ASSY	46711-082	---	1
90	PIPE COUPLING	AE08	15079	1	128	HEX HD CAPSCREW	B0604	15991	1
91	VENTURI	26817-002	---	1	129	LOCK WASHER	J06	15991	1
92	PIPE UNION	AH08	11999	1	130	FUEL RAIL GUARD	42381-074	24150	1
93	REDUCER PIPE BUSH	AE1208	15079	1	131	HEX HD CAPSCREW	B0808	15991	2
94	45° STREET ELBOW	AGS08	11999	1	132	FLAT WASHER	K08	15991	4
95	PIPE NIPPLE	T08	15079	1	133	LOCK WASHER	J08	15991	2
96	6.5' HOSE	18513-304	---	1	134	HEX NUT	D08	15991	2
97	BARB HOSE FITTING	26525-021	---	2	135	HEX HD CAPSCREW	B1214	15991	2
98	HEX HD CAPSCREW	B#10-03	15991	2	136	FLAT WASHER	K12	15991	4
99	HEX NUT	D#10	15991	2	137	LOCK WASHER	J12	15991	2
100	LOCKWASHER	J#10	15991	2	138	HEX NUT	D12	15991	2
101	CABLE CLAMP	27111-346	---	2					
102	OIL DRAIN ASSY	46342-007	---	1		NOT SHOWN:			
103	HEX HD CAPSCREW	B1007	15991	6		INSTRUCTION DECAL	38818-140	---	1
104	HEX NUT	D10	15991	6		WARNING DECAL	38816-063	---	2
105	LOCKWASHER	J10	15991	6		LUBE DECAL	38816-079	---	1
106	FLAT WASHER	K10	15991	12		SUCTION STICKER	6588AG	---	1
107	ENG SUPP CH - LH	34451-077	15080	1		DISCHARGE STICKER	6588BJ	---	1
108	ENG SUPP CH - RH	34451-076	15080	1		RPM DECAL	38816-240	---	1
109	MOTOR TENSIONER	41327-031	24150	1		LIFT DECAL	38816-330	---	2
110	HEX NUT	D08	15991	1		LIFT DECAL	38816-218	---	2
111	LOCKWASHER	J08	15991	1		PA DECAL	38812-078	---	2
112	FLAT WASHER	K08	15991	1		INSTRUCTION DECAL	38816-194	---	1
113	HEX HD CAPSCREW	22645-136	---	4		V-BELT TENSION DECAL	38816-049	---	1
114	LOCKWASHER	21171-510	---	4		WARNING DECAL	2613FE	---	2
115	ENGINE PULLEY	24214-002	---	1		STRAINER	7823A	24000	1
116	O.D. BUSHING	24131-553	---	1		FLOAT SWITCH KIT	48312-980	---	1

THE GORMAN-RUPP COMPANY • MANSFIELD, OHIO

GORMAN-RUPP OF CANADA LIMITED • ST. THOMAS, ONTARIO, CANADA

Printed in U.S.A.



THE GORMAN-RUPP COMPANY • MANSFIELD, OHIO

GORMAN-RUPP OF CANADA LIMITED • ST. THOMAS, ONTARIO, CANADA

Printed in U.S.A.

March 26, 2002

©Copyright by the Gorman-Rupp Company

5 of 14

Page 64.6 A5

PA6A60-F5L

ACDE

**S/N 1240866 Up
PUMP ISSUE 5**

**PARTS LIST
PA6A60-(SAE 4/10) Pump Assembly**

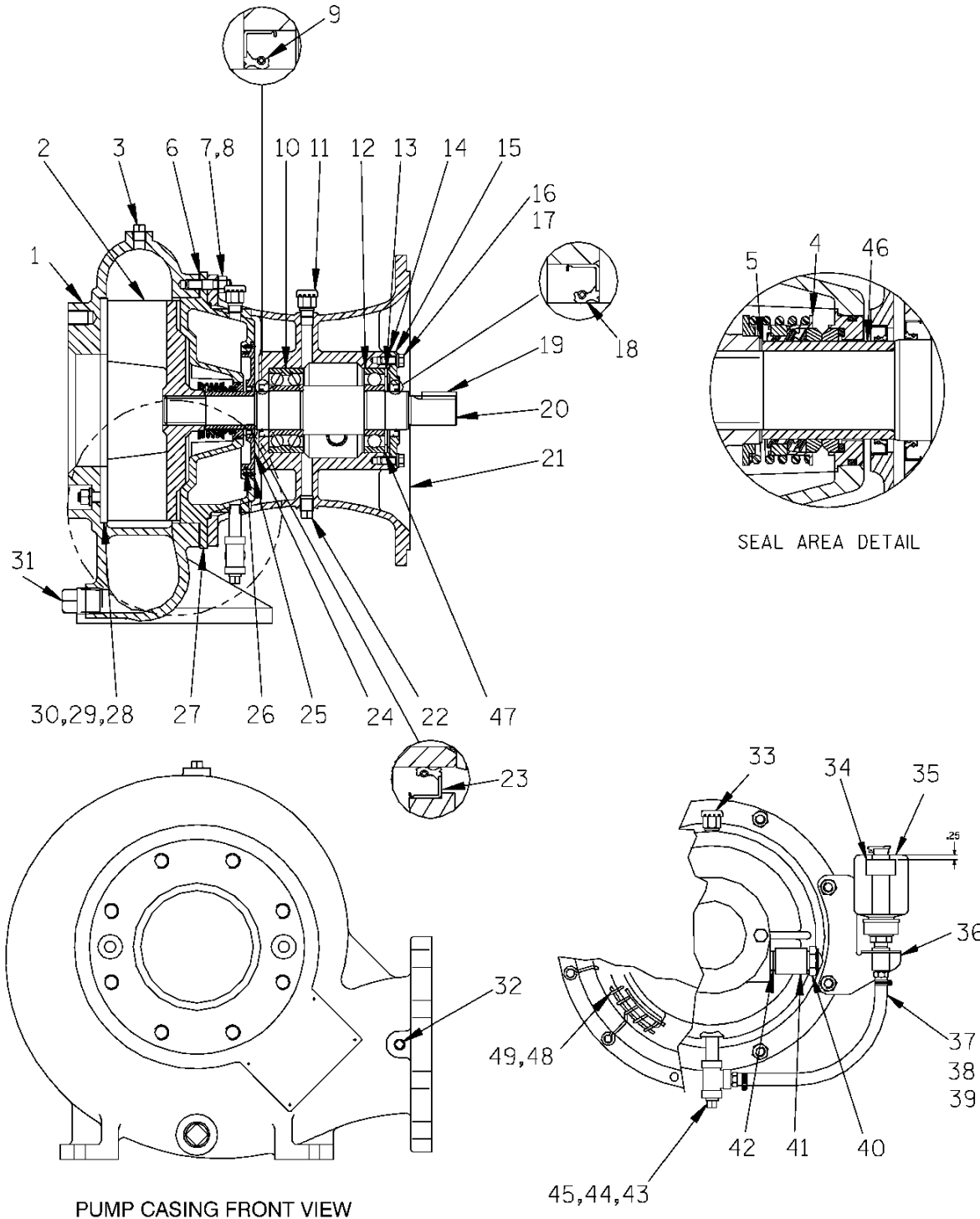
ITEM NO.	PART NAME	PART NUMBER	MAT'L CODE	QTY
1	PUMP END ASSY	66E60-(SAE4/10)	---	1
2	* GASKET	1679G	18000	1
3	STUD	C1211	15991	8
4	HEX NUT	D12	15991	8
5	CHECK VALVE ASSY	26642-126	---	1
6	STUD	C1211	15991	8
7	HEX NUT	D12	15991	8
8	* GASKET 6 IN.	25113-036	---	1
9	PRIMING CHAMBER ASSY	46112-703	---	1

* INDICATES PARTS RECOMMENDED FOR STOCK

THE GORMAN-RUPP COMPANY • MANSFIELD, OHIO

GORMAN-RUPP OF CANADA LIMITED • ST. THOMAS, ONTARIO, CANADA

Printed in U.S.A.



THE GORMAN-RUPP COMPANY • MANSFIELD, OHIO

GORMAN-RUPP OF CANADA LIMITED • ST. THOMAS, ONTARIO, CANADA

Printed in U.S.A.

March 26, 2002

©Copyright by the Gorman-Rupp Company

7 of 14

Page 64.6 A5

S/N 1240866 Up
PUMP ISSUE 5

PARTS LIST
66E60--(SAE 4/10) Pump End Assembly

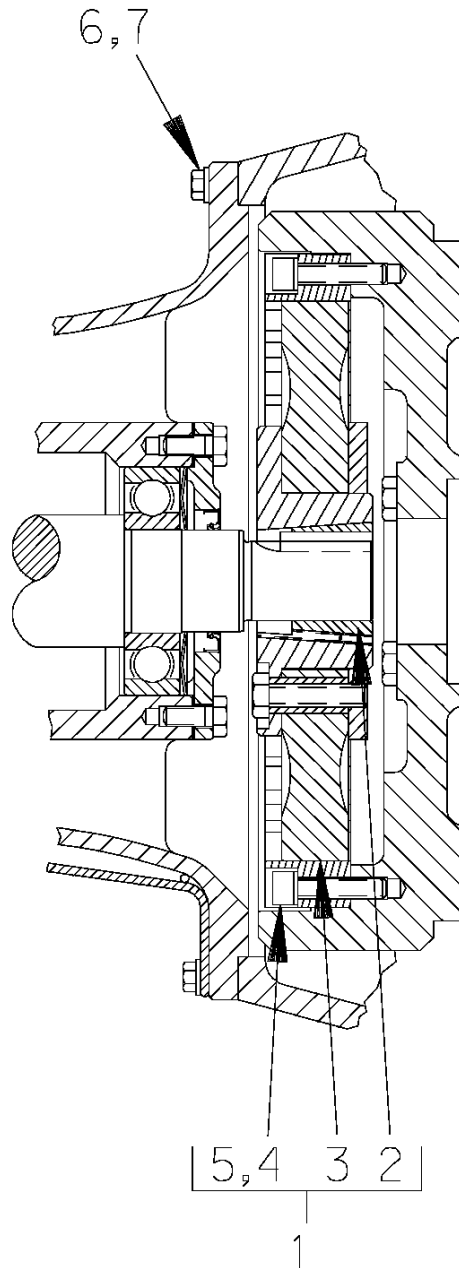
ITEM NO.	PART NAME	PART NUMBER	MAT'L CODE	QTY	ITEM NO.	PART NAME	PART NUMBER	MAT'L CODE	QTY
1	PUMP CASING	38218-014	10000	1	27	SEAL PLATE	38272-527	10000	1
2 *	IMPELLER ASSY	46151-409	---	1	28 *	WEAR PLATE ASSY	46451-746	24150	1
3	PIPE PLUG	P06	15079	1	29	HEX NUT	D08	15991	2
4 *	SEAL ASSY	46512-048	---	1	30	LOCKWASHER	J08	15991	2
5 *	ADJ SHIM SET	5091	17090	1	31	PIPE PLUG	P16	10009	1
6 *	CASING GASKET SET	34G	18000	1	32	PIPE PLUG	P04	15079	1
7	STUD	C0809	15991	8	33	AIR VENT	S1703	---	1
8	HEX NUT	D08	15991	8	34	OIL LEVEL DECAL	38816-123	---	1
9 *	OIL SEAL	25258-622	---	1	35	BOTTLE OILER	26713-004	---	1
10 *	INBOARD BALL BEARING	23421-461	---	1	36	BRACKET ASSY	41881-619	24150	1
11	AIR VENT	S1703	---	1	37	MALE CONNECTOR	26523-409	---	2
12 *	OUTBOARD BALL BRG	S1077	---	1	38	HOSE	18513-054	---	1
13 *	THRUST WASHER	31133-197	15210	1	39	HOSE CLAMP	26518-642	---	2
14 *	BRG COVER GSKT	5413G	18000	1	40	OIL LVL SIGHT GAUGE	S1471	---	1
15	BEARING CAP	4185A	10010	1	41	PIPE COUPLING	AE12	15079	1
16	HEX HD CAPSCREW	B0604	15991	4	42	PIPE NIPPLE	T12	15079	1
17	LOCKWASHER	J06	15991	4	43	PIPE NIPPLE	T0608	15079	1
18 *	OIL SEAL	25258-622	---	1	44	PIPE TEE	U06	11999	1
19 *	IMP SHAFT KEY	N0607	15990	1	45	SEAL CVTY DRAIN PLUG	P06	15079	1
20 *	IMPELLER SHAFT	38514-807	1706H	1	46 *	SHAFT SLEEVE	31163-016	1706H	1
21	INTERMEDIATE	38263-614	10010	1	47 *	BRG SHIM SET	8546	15990	1
22	BRG CAV DRAIN PLUG	P06	15079	1	48	INTERMEDIATE GUARD	42381-031	24152	1
23 *	OIL SEAL	25258-620	---	1	49	INTERMEDIATE GUARD	42381-032	24152	1
24	SEAL PLATE COVER	38242-707	10000	1	NOT SHOWN:				
25	FH MACHINE SCREW	Y#10-02	15991	4		DRIVE ASSY	44162-119	---	1
26 *	SEAL PLT CVR O-RING	25152-256	---	1		NAME PLATE	38818-127	13000	1
						DRIVE SCREW	BM#04-03	17000	4

* INDICATES PARTS RECOMMENDED FOR STOCK

THE GORMAN-RUPP COMPANY • MANSFIELD, OHIO

GORMAN-RUPP OF CANADA LIMITED • ST. THOMAS, ONTARIO, CANADA

Printed in U.S.A.



THE GORMAN-RUPP COMPANY • MANSFIELD, OHIO

GORMAN-RUPP OF CANADA LIMITED • ST. THOMAS, ONTARIO, CANADA

Printed in U.S.A.

March 26, 2002

©Copyright by the Gorman-Rupp Company

9 of 14

Page 64.6 A5

PA6A60-F5L

ACDE

**S/N 1240866 Up
PUMP ISSUE 5**

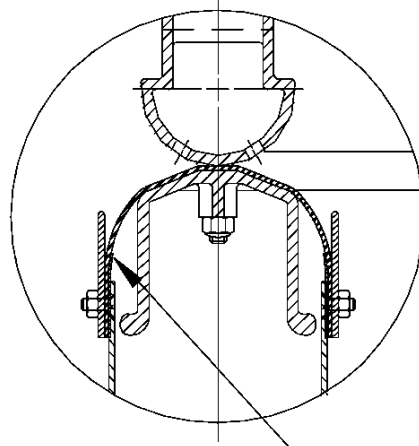
**PARTS LIST
(SAE 4/10) Drive Assembly**

ITEM NO.	PART NAME	PART NUMBER	MAT'L CODE	QTY
1	COUPLING KIT	48112-001	---	1
2	-BUSHING	24131-345	---	1
3	-COUPLING ASSEMBLY	44165-011	---	1
4	-LOCKWASHER	21171-536	---	8
5	-SOCKET HD CAPSCREW	22644-220	---	8
6	HEX HD CAPSCREW	22645-164	---	12
7	LOCKWASHER	21171-511	---	12

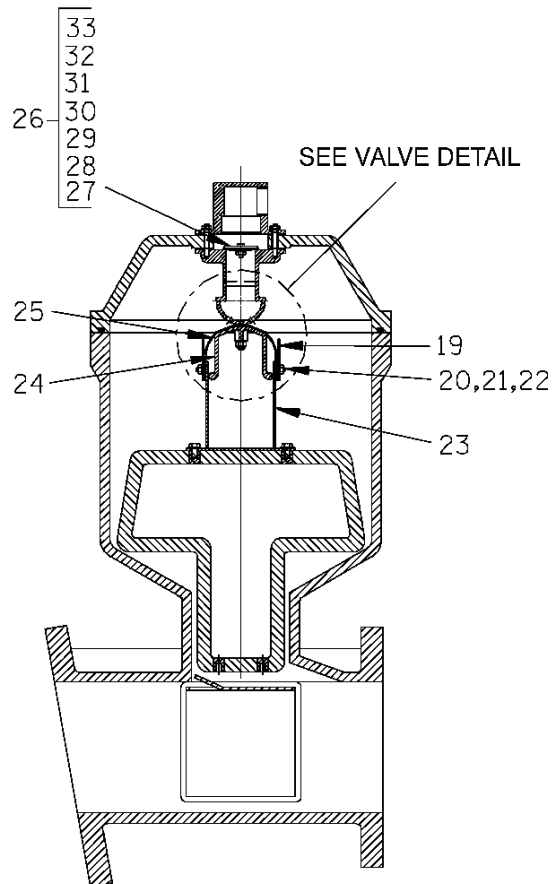
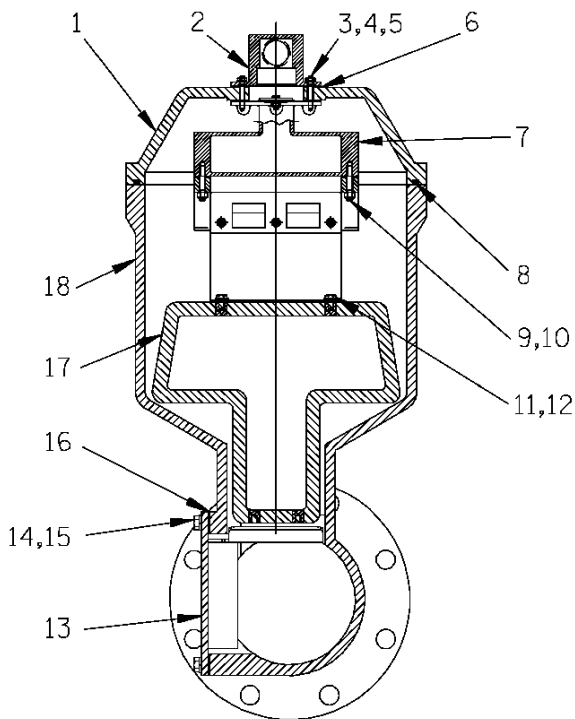
THE GORMAN-RUPP COMPANY • MANSFIELD, OHIO

GORMAN-RUPP OF CANADA LIMITED • ST. THOMAS, ONTARIO, CANADA

Printed in U.S.A.



34
VALVE DETAIL



THE GORMAN-RUPP COMPANY • MANSFIELD, OHIO

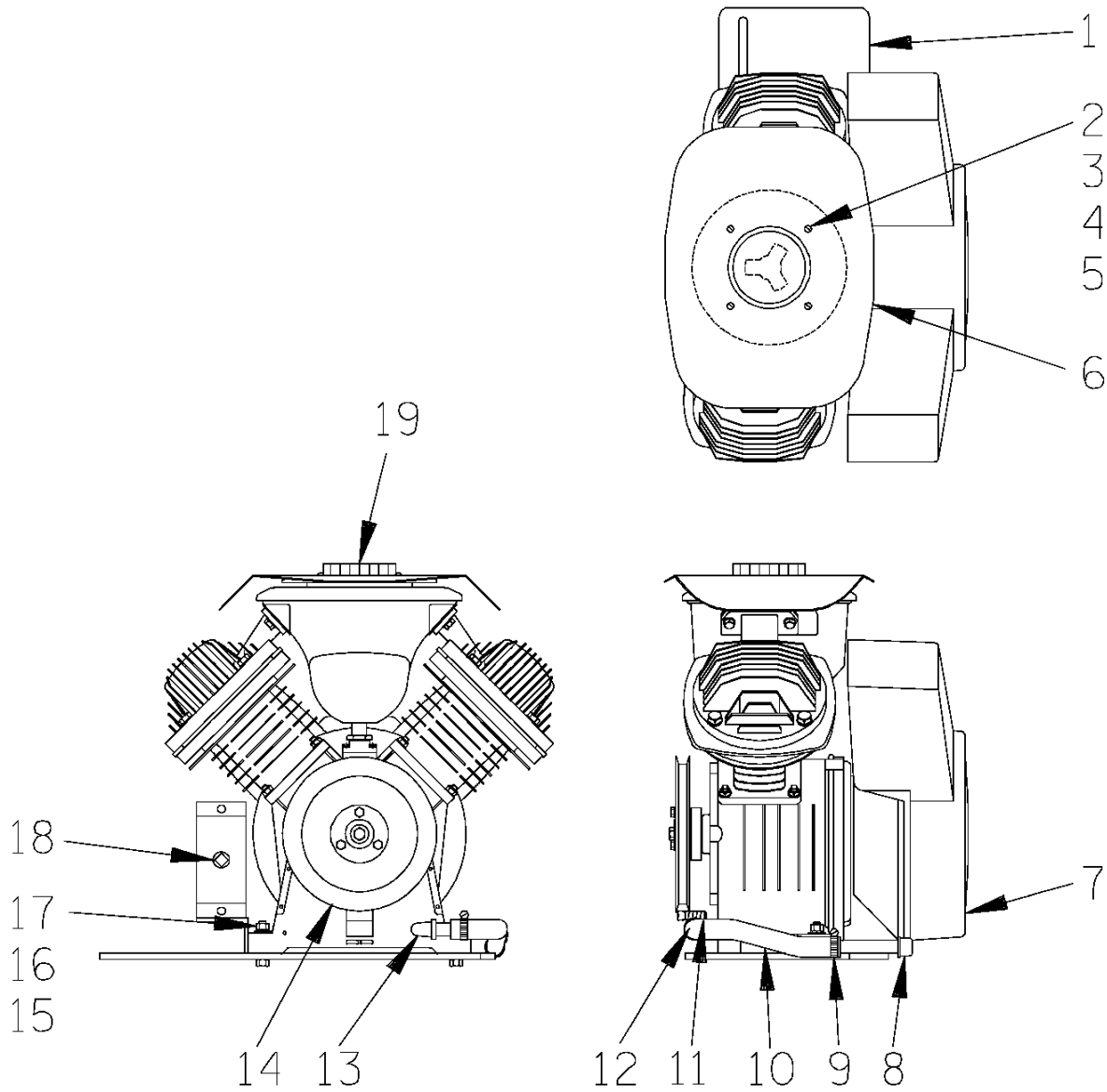
GORMAN-RUPP OF CANADA LIMITED • ST. THOMAS, ONTARIO, CANADA Printed in U.S.A.

March 26, 2002

©Copyright by the Gorman-Rupp Company

11 of 14

Page 64.6 A5



THE GORMAN-RUPP COMPANY • MANSFIELD, OHIO

GORMAN-RUPP OF CANADA LIMITED • ST. THOMAS, ONTARIO, CANADA

Printed in U.S.A.

March 26, 2002

©Copyright by the Gorman-Rupp Company

13 of 14

Page 64.6 A5

**PARTS LIST
46181-902 Air Compressor Assembly**

ITEM NO.	PART NAME	PART NUMBER	MAT'L CODE	QTY
1	AIR COMPRESSOR MOUNTING PLATE	41881-554	24150	1
2	MACHINE SCREW	X#10-02	15991	4
3	HEX NUT	D#10	15991	4
4	LOCKWASHER	J#10	15991	4
5	FLAT WASHER	K#10	15991	4
6	AIR COMPRESSOR COVER	38354-043	15120	1
7	AIR COMPRESSOR	26813-111	---	1
8	PIPE CAP	V06	15079	1
9	HOSE CLAMP	26518-683	---	1
10	HOSE	18513-304	---	1
11	HOSE CLAMP	26518-683	---	1
12	PIPE NIPPLE	2434	15070	1
13	PIPE ELBOW	R06	11999	1
14	A/C PULLEY ASSY	44112-001	---	1
15	HEX NUT	D06	15991	4
16	LOCKWASHER	J06	15991	4
17	FLAT WASHER	K06	15991	4
18	PIPE PLUG	P08	15079	1
19	AIR COMPRESSOR KNOB	38429-501	19220	1

THE GORMAN-RUPP COMPANY • MANSFIELD, OHIO

GORMAN-RUPP OF CANADA LIMITED • ST. THOMAS, ONTARIO, CANADA

Printed in U.S.A.

**For U.S. and International Warranty Information,
Please Visit www.grpumps.com/warranty
or call:
U.S.: 419-755-1280
International: +1-419-755-1352**

**For Canadian Warranty Information,
Please Visit www.grcanada.com/warranty
or call:
519-631-2870**