



PRIME-AIRE[®] **SERIES**
PUMP MODEL
PA6C60-4045T

Including PA6C60-(4045T) Pump End

MANUAL
PART 2 of 3

PARTS
LIST
WITH
PERFORMANCE CURVE

THE GORMAN-RUPP COMPANY • MANSFIELD, OHIO

GORMAN-RUPP OF CANADA LIMITED • ST. THOMAS, ONTARIO, CANADA Printed in U.S.A.



The engine exhaust from this product contains chemicals known to the State of California to cause cancer, birth defects or other reproductive harm.

PERFORMANCE CURVE – SECTION A

RECORDING MODEL AND SERIAL NUMBERS

Please record the pump model and serial number in the spaces provided below and in the separate Installation/Operation Manual accompanying your pump. Your Gorman-Rupp distributor needs this information when you require parts or service.

Pump Model: _____

Serial Number: _____

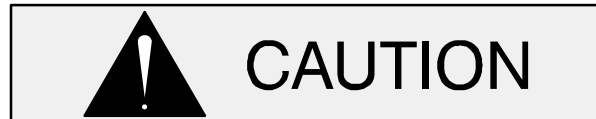
WARRANTY INFORMATION

The pump warranty is provided as part of Gorman-Rupp's support program for customers who operate and maintain their equipment as described in this manual and other accompanying literature. Please note that should the equipment be abused or modified to change its performance beyond the original factory specifications, the warranty will become void and any claim will be denied.

PERFORMANCE CURVE

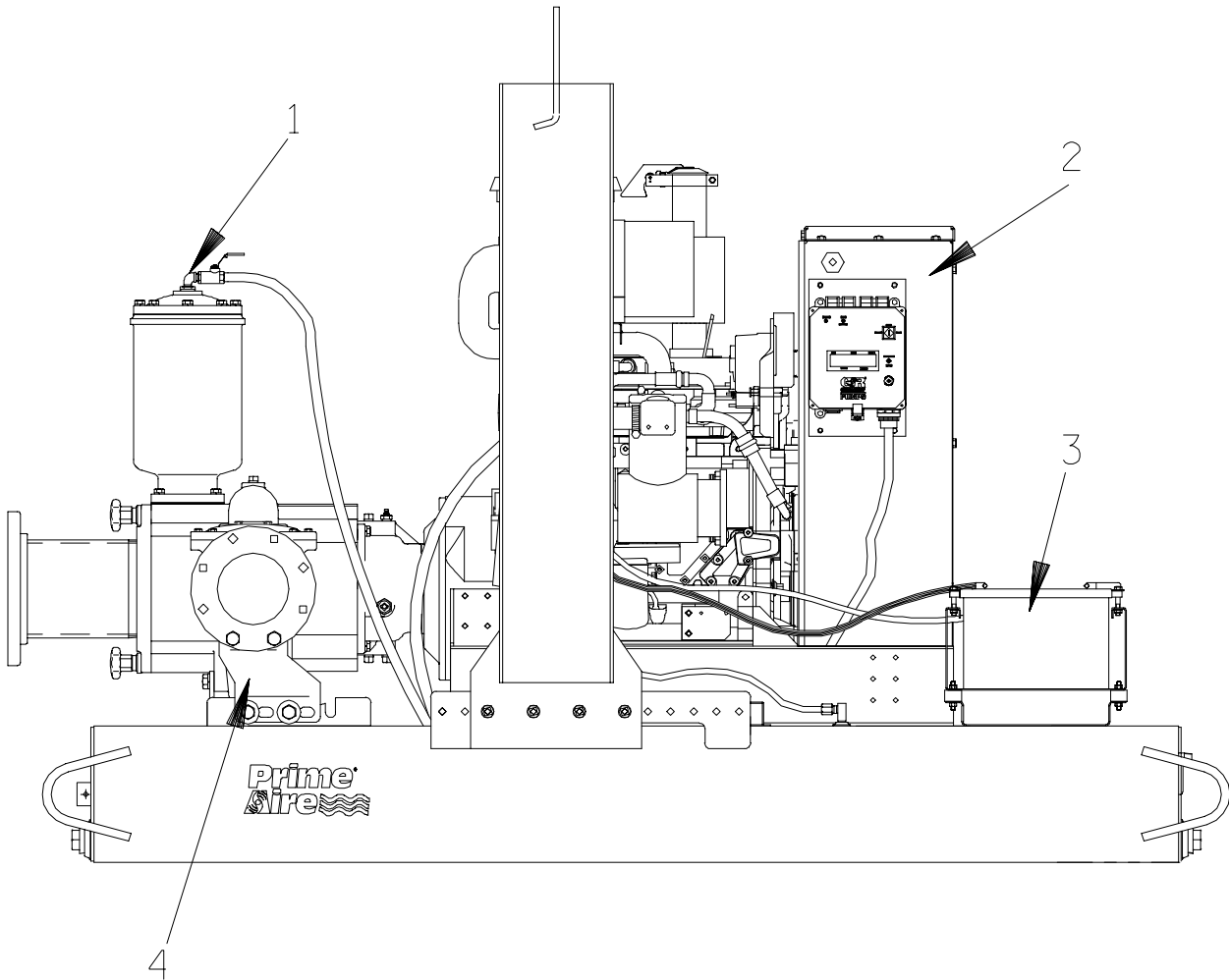
The performance curve on the following page is based on 70° F (21° C) clear water at sea level, with minimum suction lift. Since pump installations are seldom identical, your performance may be different due to such factors as viscosity, specific gravity, elevation, temperature, and impeller trim.

If your pump serial number is followed by an "N", your pump is **NOT** a standard production model. Contact the Gorman-Rupp Company to verify performance or part numbers.



Pump speed and operating condition points must be within the continuous performance range shown on the curve.

This Page Intentionally Blank



THE GORMAN-RUPP COMPANY • MANSFIELD, OHIO

GORMAN-RUPP OF CANADA LIMITED • ST. THOMAS, ONTARIO, CANADA

Printed in U.S.A.

February 8, 2005

© Copyright by the Gorman-Rupp Company

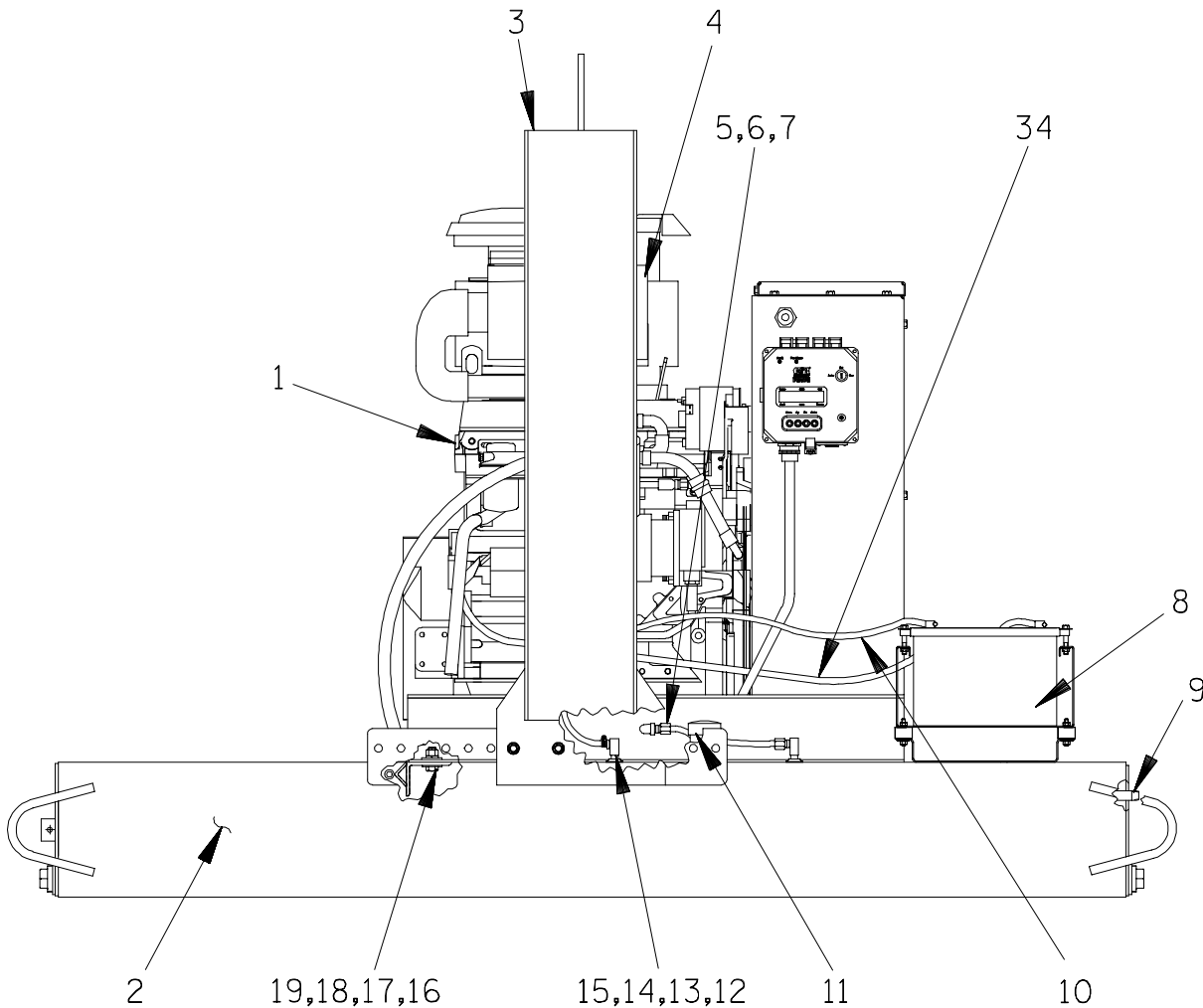
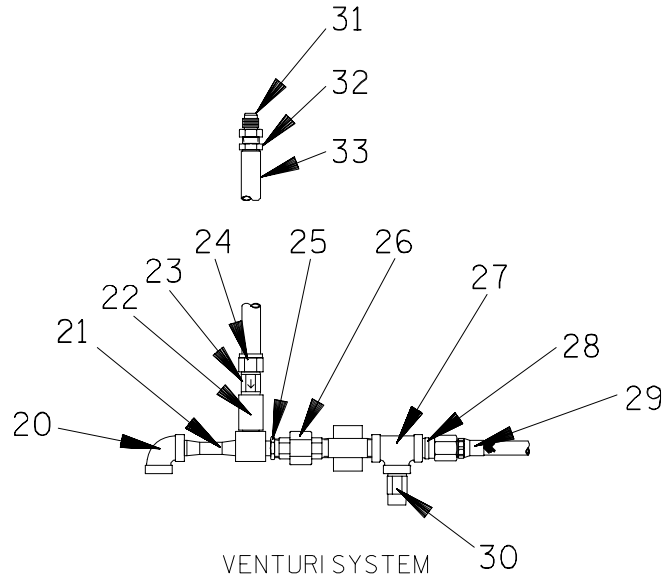
S/N 1303082 Up
PUMP ISSUE 2

PARTS LIST
Pump Model PA6C60-4045T

ITEM NO.	PART NAME	PART NUMBER	MAT'L CODE	QTY
1	PUMP ASSEMBLY	PA6C60-(4045T)	----	1
2	POWER UNIT KIT	46143-044	----	1
3	BATTERY	SEE OPTIONS	----	REF
4	PUMP MOUNTING KIT	48157-023	----	1
NOT SHOWN:				
	G-R DECAL	GR-06	----	3
	PA DECAL	38812-078	----	2
	INSTR TAG PAPER	38817-085	----	1
	CAUTION DECAL	2613FJ	----	1
OPTIONAL:				
	REPAIR CONTROL PANEL	48122-531	----	1
	12V BATTERY (DRY)	29331-517	----	1
	12V BATTERY (WET)	29331-527	----	1
	WHEEL KIT	GRP30-255	----	1
	DBL FLOAT SWITCH KIT	48312-981	----	1
	EPS/TRANSDUCER CTRL PANEL KIT	48122-523	----	1
	6" THREADED FLANGE KIT	48274-205	----	1
	GAUGE KIT	48213-112	----	1
	2-5/16" BALL TANDEM HIGHWAY TRAILER W/SURGE BRAKES			
	-JACK W/FOOT PAD	29313-011	----	1
	-JACK W/DOLLY WHEEL	29313-012	----	1
	3" I.D. LUNETTE EYE TANDEM HIGHWAY TRAILER W/SURGE BRAKES			
	-JACK W/FOOT PAD	29313-013	----	1
	-JACK W/DOLLY WHEEL	29313-014	----	1
	2-5/16" BALL TANDEM HIGHWAY TRAILER W/ELECTRIC BRAKES			
	-JACK W/FOOT PAD	29313-015	----	1
	-JACK W/DOLLY WHEEL	29313-016	----	1
	3" I.D. LUNETTE EYE TANDEM HIGHWAY TRAILER W/ELECTRIC BRAKES			
	-JACK W/FOOT PAD	29313-017	----	1
	-JACK W/DOLLY WHEEL	29313-018	----	1

THE GORMAN-RUPP COMPANY • MANSFIELD, OHIO

GORMAN-RUPP OF CANADA LIMITED • ST. THOMAS, ONTARIO, CANADA Printed in U.S.A.



THE GORMAN-RUPP COMPANY • MANSFIELD, OHIO

GORMAN-RUPP OF CANADA LIMITED • ST. THOMAS, ONTARIO, CANADA

Printed in U.S.A.

February 8, 2005

© Copyright by the Gorman-Rupp Company

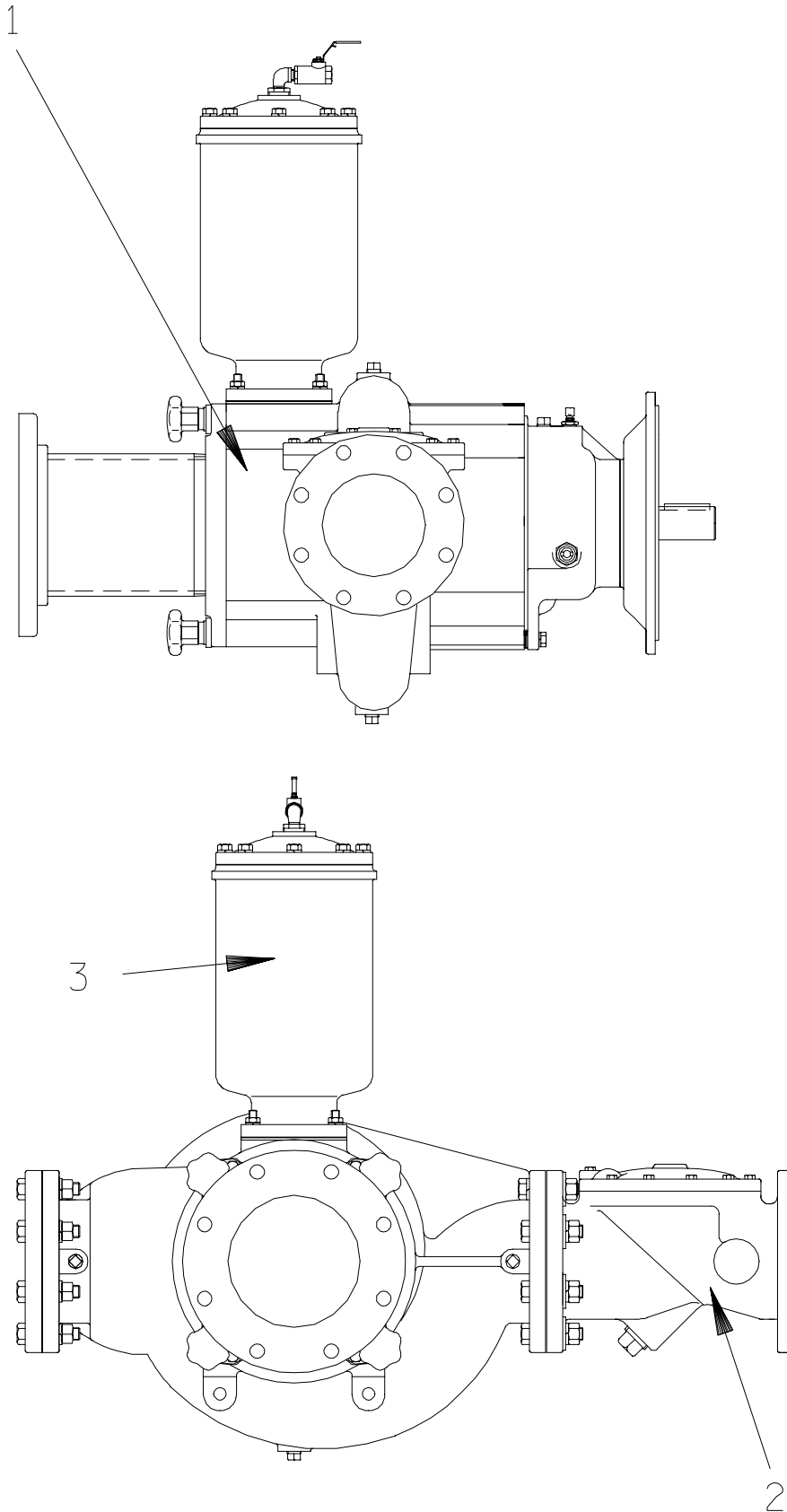
S/N 1303082 Up
PUMP ISSUE 2

PARTS LIST
46143-044 Power Unit Kit

ITEM NO.	PART NAME	PART NUMBER	MAT'L CODE	QTY
1	JOHN DEERE ENGINE	29224-133	----	1
2	BASE	41553-006	24150	1
3	LIFTING BAIL KIT	48274-803	----	1
4	MUFFLER GUARD ASSY	42331-061	----	1
5	MALE ELBOW	26351-131	----	1
6	CONNECTOR	S1447	----	2
7	HOSE ASSEMBLY	46341-789	----	1
8	BATTERY BOX KIT	42432-005	----	1
9	OIL DRAIN ASSY	46342-013	----	1
10	CABLE ASSY	47311-192	----	1
11	GAUGE	29332-135	----	1
12	FUEL PICKUP AND RETURN	29332-145	----	2
13	BARBED HOSE FITTING	26523-386	----	2
14	HOSE	11308G	----	1
15	HOSE CLAMP	26518-641	----	2
16	HEX HEAD CAP SCREWS	B1007	15991	4
17	HEX NUT	D10	15991	4
18	LOCK WASHER	J10	15991	4
19	FLAT WASHER	K10	15991	4
20	PIPE ELBOW	R08	11999	1
21	VENTURI	26817-002	----	1
22	PIPE CPLG	AE08	15079	1
23	BALL/CHECK VALVE	26641-091	15079	1
24	BARBED HOSE FITTING	26523-446	----	1
25	REDUCING PIPE BUSHINGS	AP0806	15079	1
26	PIPE UNION	AH08	11999	1
27	TEE	U08	11999	1
28	MALE ADAPTER	26351-065	----	2
29	HOSE ASSY	46341-426	----	1
30	PRESSURE RELIEF VALVE	26662-028	----	1
31	CONNECTOR	S1598	----	1
32	BARBED HOSE FITTING	26523-047	----	1
33	5 FT. HOSE	18513-113	----	1
34	NEG BATTERY CABLE	47311-172	----	1
NOT SHOWN:				
	ENGINE START UP TAG	38816-269	----	1
	WARNING DECAL	38816-203	----	1
	INSTRUCTION DECAL	38818-144	----	1
	FLOAT SWITCH KIT	48312-980	----	1

THE GORMAN-RUPP COMPANY • MANSFIELD, OHIO

GORMAN-RUPP OF CANADA LIMITED • ST. THOMAS, ONTARIO, CANADA Printed in U.S.A.



THE GORMAN-RUPP COMPANY • MANSFIELD, OHIO

GORMAN-RUPP OF CANADA LIMITED • ST. THOMAS, ONTARIO, CANADA

Printed in U.S.A.

February 8, 2005

© Copyright by the Gorman-Rupp Company

5 of 15
Page 64.6 C15

S/N 1303082 Up
PUMP ISSUE 2

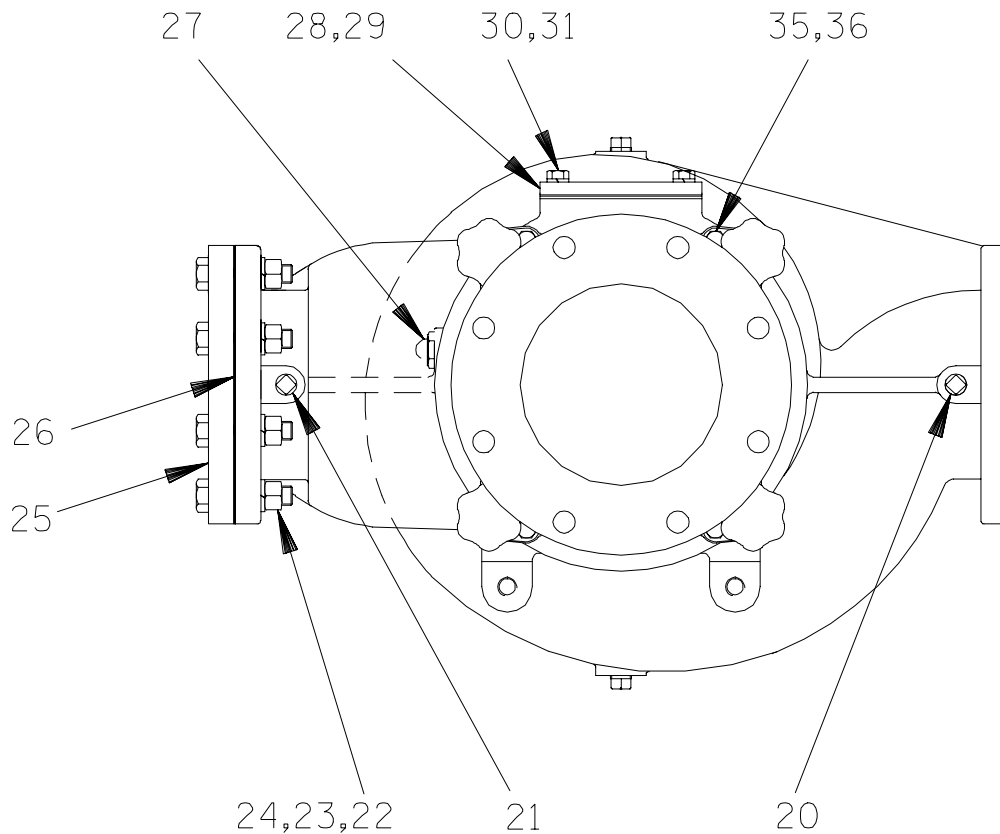
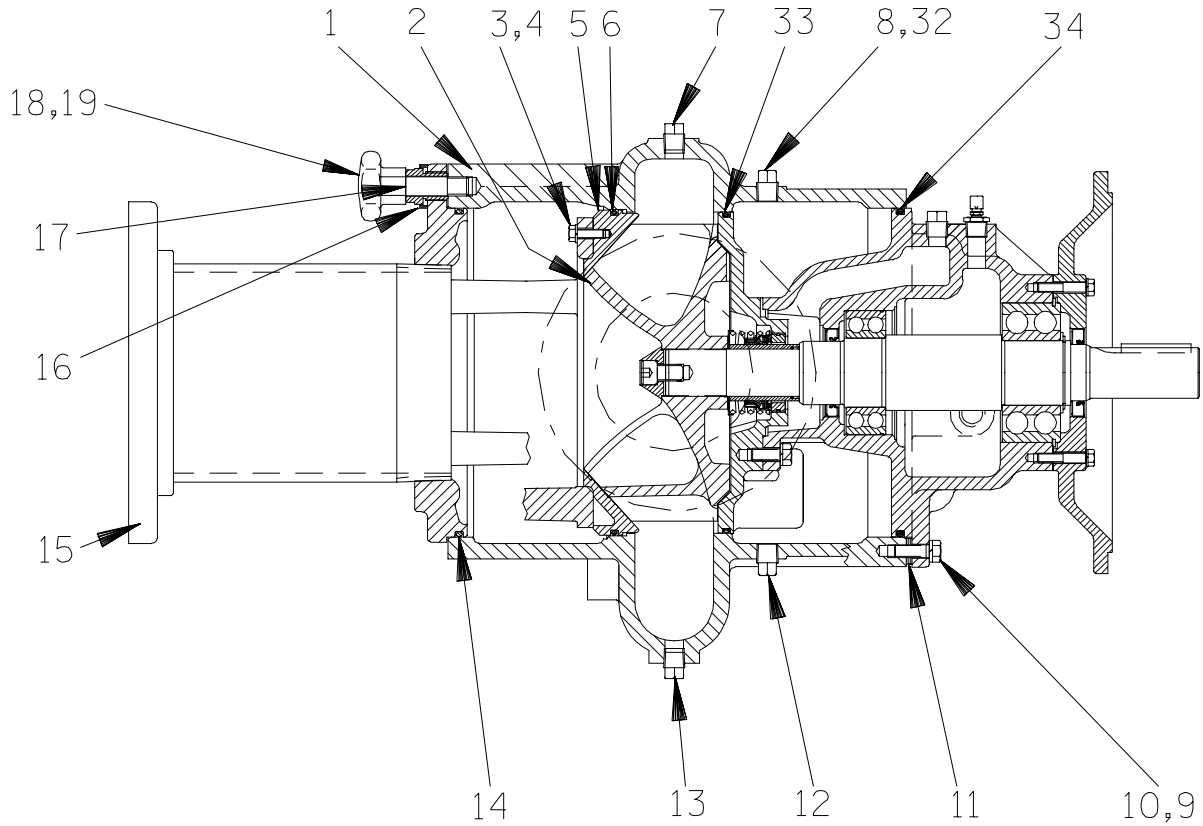
PARTS LIST
PA6C60-(SAE 4/10) Pump Assembly

ITEM NO.	PART NAME	PART NUMBER	MAT'L CODE	QTY
1	PUMP END ASSY	66F60-(4045T)	---	1
2	CHECK VALVE KIT	48274-015	---	1
	-CHECK VALVE	26642-126	---	1
*	-FLAPPER	26688-001	---	1
*	-COVER O-RING	25152-377	---	1
*	-FLANGE GASKET	25113-036	---	1
3	PRIMING CHAMBER KIT	48275-005	---	1
NOT SHOWN				
	STRAINER	46641-010	24150	1
	SUCTION STICKER	6588AG	---	1
	DISCHARGE STICKER	6588BJ	---	1
	WARNING DECAL	2613FE	---	1
	G-R DECAL	GR-06	---	1
	LUBE DECAL	11421A	---	1
	OIL LEVEL DECAL	38816-123	---	1
	ROTATION DECAL	2613M	---	1

* INDICATES PARTS RECOMMENDED FOR STOCK

THE GORMAN-RUPP COMPANY • MANSFIELD, OHIO

GORMAN-RUPP OF CANADA LIMITED • ST. THOMAS, ONTARIO, CANADA Printed in U.S.A.



THE GORMAN-RUPP COMPANY • MANSFIELD, OHIO

GORMAN-RUPP OF CANADA LIMITED • ST. THOMAS, ONTARIO, CANADA

Printed in U.S.A.

February 8, 2005

© Copyright by the Gorman-Rupp Company

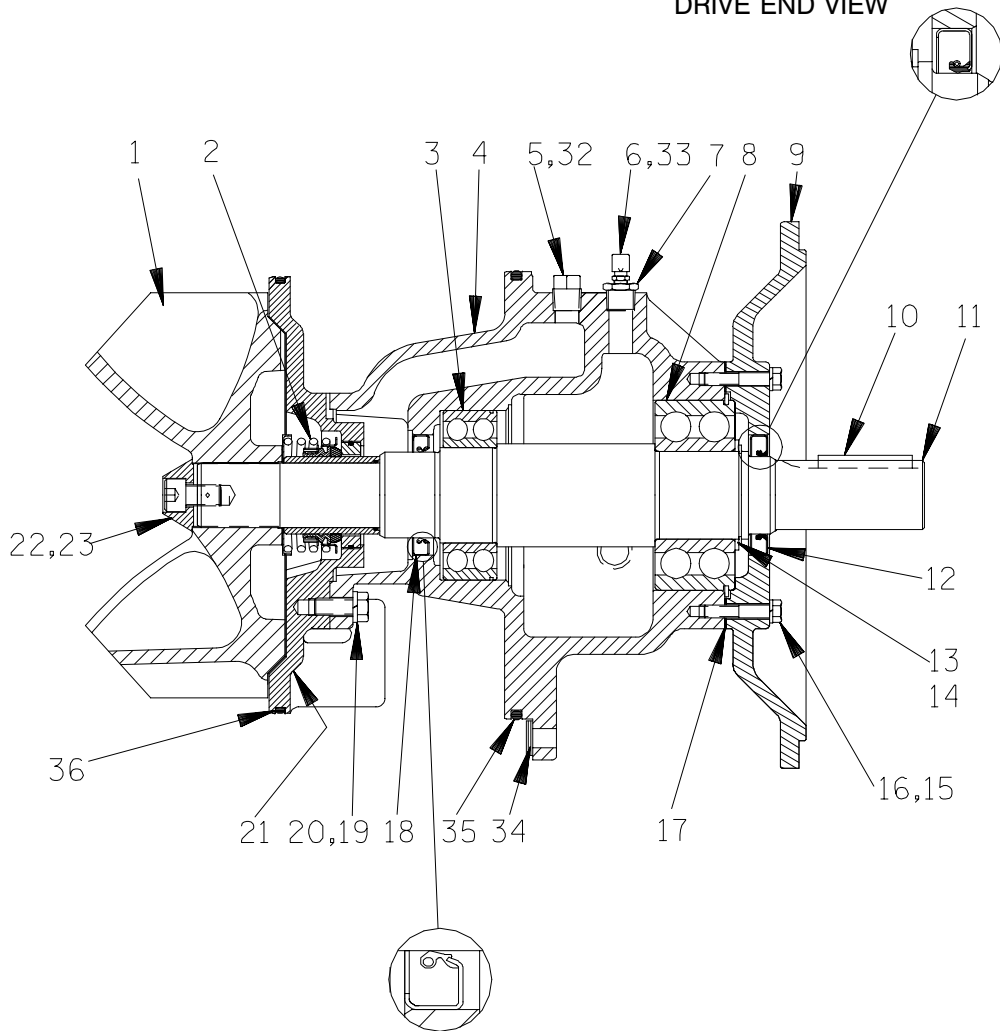
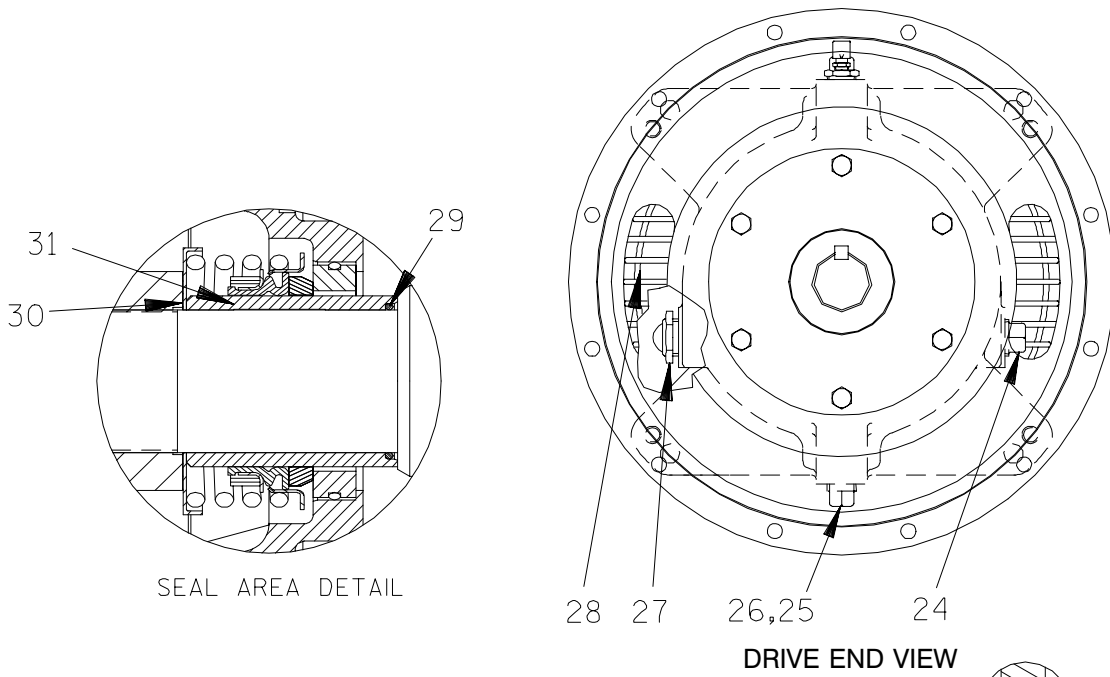
S/N 1303082 Up
PUMP ISSUE 2PARTS LIST
66F60-(4045T) Pump End Assembly

ITEM NO.	PART NAME	PART NUMBER	MAT'L CODE	QTY
1	VOLUTE	38218-303	11010	1
2	REPAIR ROTATING ASSY	44163-432	---	1
3	HEX HD CAP SCREW	B0604-1/2	17000	4
4	LOCK WASHER	J06	17090	4
5	WEAR PLATE	38691-864	11010	1
6	* O-RING	25152-453	---	1
7	PIPE PLUG	P08	15079	1
8	VENTED PLUG	4823A	15079	1
9	HEX HD CAP SCREW	B0806	15991	4
10	LOCK WASHER	J08	15991	4
11	ADJUSTING SHIM	13131-3	17040	12
12	PIPE PLUG	P08	15079	1
13	PIPE PLUG	P08	15079	1
14	* O-RING	S1676	---	1
15	BACK COVER PLATE ASSY	42111-812	11010	1
16	LOCKING COLLAR	38115-551	15001	4
17	ADJUSTING SCREWS	31871-070	1500X	4
18	STUD	C1213	15991	4
19	HAND KNOB	38115-901	10000	4
20	PIPE PLUG	P08	15079	1
21	PIPE PLUG	P08	15079	1
22	HEX HD CAP SCREW	B1213	15991	8
23	LOCK WASHER	J12	15991	8
24	HEX NUT	D12	15991	8
25	BLIND FLANGE ASSY	42111-349	---	1
26	* GASKET	25113-036	---	1
27	SIGHT GAUGE	S1471	---	1
28	COVERPLATE	33541-045	15080	1
29	* GASKET	38687-053	19060	1
30	HEX HEAD CAP SCREW	B0805	15991	4
31	LOCK WASHER	J08	15991	4
32	SHIP PLUG	11495B	15079	1
33	* O-RING	25152-381	---	1
34	* O-RING	S1676	---	1
35	HEX HD CAP SCREW	B0804-1/2	15991	4
36	LOCK WASHER	J08	15991	4
NOT SHOWN:				
	DRIVE ASSY	44162-159	---	1
	PIPE PLUG	P12	15079	1
	OIL LEVEL DECAL	38816-123	---	1
	NAME PLATE	38818-127	13000	1
	DRIVE SCREW	BM#04-03	17000	4

* INDICATES PARTS RECOMMENDED FOR STOCK

THE GORMAN-RUPP COMPANY • MANSFIELD, OHIO

GORMAN-RUPP OF CANADA LIMITED • ST. THOMAS, ONTARIO, CANADA Printed in U.S.A.



THE GORMAN-RUPP COMPANY • MANSFIELD, OHIO

GORMAN-RUPP OF CANADA LIMITED • ST. THOMAS, ONTARIO, CANADA

Printed in U.S.A.

February 8, 2005

© Copyright by the Gorman-Rupp Company

S/N 1303082 Up
PUMP ISSUE 2

PARTS LIST
44163-432 Repair Rotating Assembly

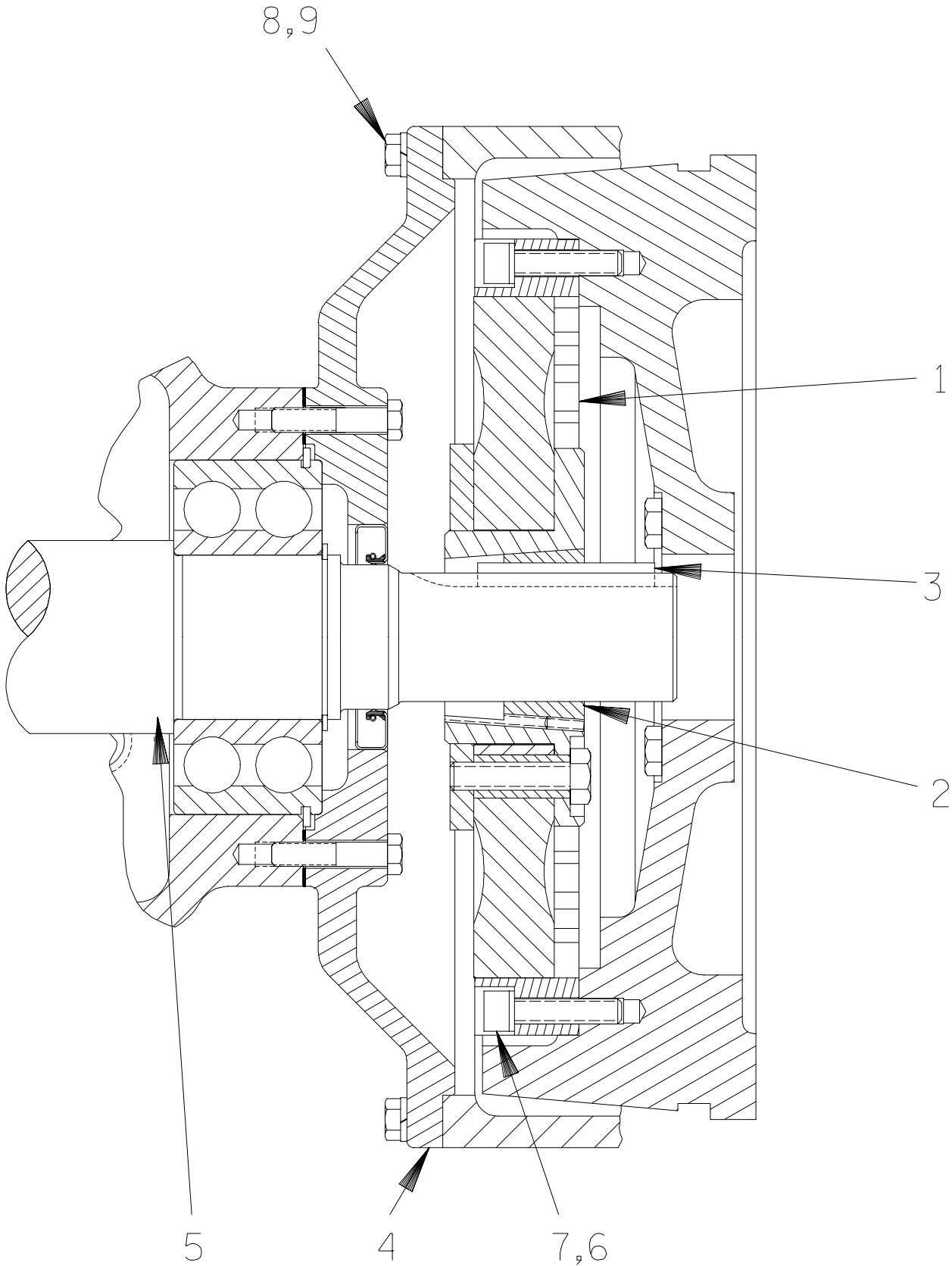
ITEM NO.		PART NAME	PART NUMBER	MAT'L CODE	QTY
1	*	IMPELLER	38615-095	11010	1
2	*	SEAL ASSY	46512-149	---	1
3	*	INBOARD BALL BEARING	23422-019	---	1
4		BEARING HOUSING	38251-513	10000	1
5		VENTED PLUG	4823A	15079	1
6		AIR VENT	S1530	---	1
7		RED PIPE BUSHING	AP0802	15079	1
8	*	OUTBOARD BALL BRG	23422-414	---	1
9		DRIVE FLANGE	38545-004	10000	1
10	*	IMP SHAFT KEY	24113-603	---	REF
11		IMPELLER SHAFT	38515-592	1706H	1
12	*	OIL SEAL	S1907	---	1
13		SNAP RING	S720	---	1
14		THRUST WASHER	31134-115	15000	1
15		HEX HD CAPSCREW	B0608	15991	6
16		LOCKWASHER	J06	15991	6
17	*	BRG HOUSING GSKT	38683-474	18000	1
18	*	OIL SEAL	25227-771	---	1
19		HEX HD CAPSCREW	B0805-1/2	15991	4
20		LOCKWASHER	J08	15991	4
21		SEAL PLATE	38272-256	10000	1
22		SOCKET HD CAPSCREW	DM1004S	17090	1
23		IMPELLER WASHER	31514-015	17000	1
24		PIPE PLUG	P12	15079	1
25		PIPE PLUG	P08	15079	1
26		BRG CVTY DRAIN PLUG	P08	15079	1
27		SIGHT GAUGE	S1471	---	1
28		INTERMEDIATE GUARD	42381-509	24152	2
29	*	SHAFT SLEEVE O-RING	25154-131	---	REF
30		IMPELLER ADJ SHIM SET	48261-057	---	REF
31	*	SHAFT SLEEVE	31163-019	1706H	1
32		SHIP PLUG	11495B	15079	1
33		SHIP PLUG	11495B	15079	1
34		ADJ SHIM SET	13131-3	17040	12
35	*	BRG HOUSING O-RING	S1676	---	1
36	*	SEAL PLATE O-RING	25152-381	---	1
NOT SHOWN:					
		INSTRUCTION TAG	6588U	---	1

* INDICATES PARTS RECOMMENDED FOR STOCK

THE GORMAN-RUPP COMPANY • MANSFIELD, OHIO

GORMAN-RUPP OF CANADA LIMITED • ST. THOMAS, ONTARIO, CANADA

Printed in U.S.A.



THE GORMAN-RUPP COMPANY • MANSFIELD, OHIO

GORMAN-RUPP OF CANADA LIMITED • ST. THOMAS, ONTARIO, CANADA

Printed in U.S.A.

February 8, 2005

© Copyright by the Gorman-Rupp Company

11 of 15
Page 64.6 C15

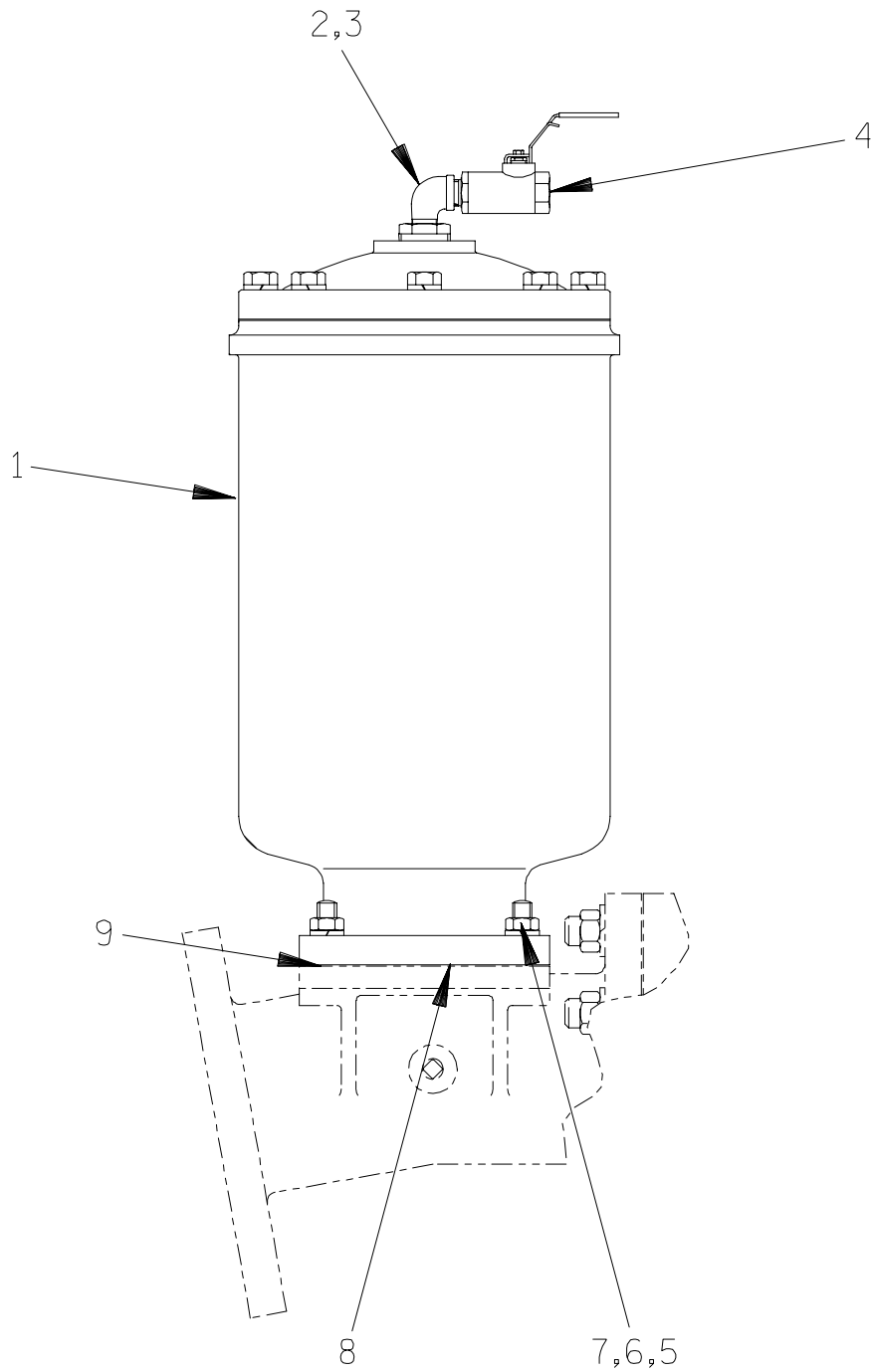
S/N 1303082 Up
PUMP ISSUE 2

PARTS LIST
44162-159 Drive Assembly

ITEM NO.	PART NAME	PART NUMBER	MAT'L CODE	QTY
1	COUPLING ASSY	44165-016	---	1
2	BUSHING	24131-498	---	1
3	-KEY	24113-603	---	1
4	DRIVE FLANGE	38545-004	10000	1
5	IMPELLER SHAFT	38515-586	1706H	1
6	LOCKWASHER	21171-536	---	8
7	SOCKET HD CAPSCREW	BD0606-1/2	15991	8
8	HEX HD CAPSCREW	B0605	15991	12
9	LOCKWASHER	J06	15991	12

THE GORMAN-RUPP COMPANY • MANSFIELD, OHIO

GORMAN-RUPP OF CANADA LIMITED • ST. THOMAS, ONTARIO, CANADA Printed in U.S.A.



THE GORMAN-RUPP COMPANY • MANSFIELD, OHIO

GORMAN-RUPP OF CANADA LIMITED • ST. THOMAS, ONTARIO, CANADA

Printed in U.S.A.

February 8, 2005

© Copyright by the Gorman-Rupp Company

13 of 15
Page 64.6 C15

S/N 1303082 Up
PUMP ISSUE 2

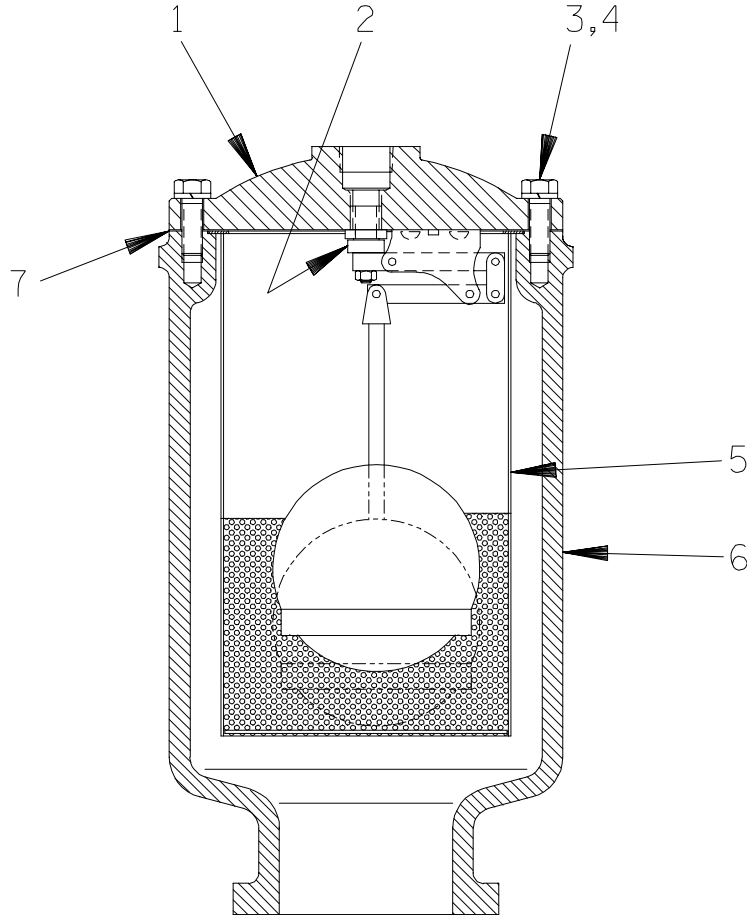
PARTS LIST
48275-005 Priming Chamber Kit

ITEM NO.	PART NAME	PART NUMBER	MAT'L CODE	QTY
1	PRIMING HOPPER ASSY	46112-709	---	1
2	PIPE BUSHING	AP1608	11999	1
3	STREET ELBOW	RS08	11999	1
4	BALL VALVE	26631-052	---	1
5	STUD	C0809	15991	4
6	HEX NUT	D08	15991	4
7	LOCK WASHER	J08	15991	4
8	* GASKET	38687-053	19060	1
9	BAFFLE	31113-011	17000	1

* INDICATES PARTS RECOMMENDED FOR STOCK

THE GORMAN-RUPP COMPANY • MANSFIELD, OHIO

GORMAN-RUPP OF CANADA LIMITED • ST. THOMAS, ONTARIO, CANADA Printed in U.S.A.



PARTS LIST
46112-709 Priming Chamber Assembly

ITEM NO.	PART NAME	PART NUMBER	MAT'L CODE	QTY
1	PRIMING VALVE	26664-007	---	1
2	-ORIFICE BUTTON	26688-021	---	1
3	HEX HD CAPSCREW	B0806	15991	8
4	LOCKWASHER	J08	15991	8
5	STRAINER ASSY	46641-222	17000	1
6	PRIMING CHAMBER	38343-020	10000	1
7	* PRIMING VALVE GASKET	38683-657	19060	1

* INDICATES PARTS RECOMMENDED FOR STOCK

THE GORMAN-RUPP COMPANY • MANSFIELD, OHIO

GORMAN-RUPP OF CANADA LIMITED • ST. THOMAS, ONTARIO, CANADA

Printed in U.S.A.

**For U.S. and International Warranty Information,
Please Visit www.grpumps.com/warranty
or call:
U.S.: 419-755-1280
International: +1-419-755-1352**

**For Canadian Warranty Information,
Please Visit www.grcanada.com/warranty
or call:
519-631-2870**