



**Sound Attenuated  
Diesel Engine Driven  
Environmental Silent Pump  
Priming Assisted Centrifugal Pump  
w/Autostart  
Model PA4A60C-4LE2T FT4-ESP  
Size 4" x 4"**



Total Head		Capacity of Pump in U.S. Gallons per Minute (GPM) at Continuous Performance				
P.S.I.	Feet					
52.0	120	210	210	210	210	210
47.7	110	400	480	480	480	480
39.0	90	420	570	690	805	860
30.4	70	430	580	715	830	905
21.7	50	440	590	725	845	930
<b>Suction Lift</b>		<b>25'</b>	<b>20'</b>	<b>15'</b>	<b>10'</b>	<b>5'</b>

**PUMP SPECIFICATIONS**

**Size:** 4" x 4" (102 mm x 102 mm) Flanged.  
**Casing:** Gray Iron 30.  
 Maximum Operating Pressure 81 psi (558 kPa).\*  
**Semi-Open Type, Two Vane Impeller:** Ductile Iron 65-45-12.  
 Handles 3" (76,2 mm) Diameter Spherical Solids.  
**Impeller Shaft:** Stainless Steel 17-4 PH.  
**Replaceable Wear Plate:** Carbon Steel ASTM A36.  
**Bearing Housing:** Gray Iron 30.  
**Seal Plate:** Gray Iron 30.  
**Seal:** Cartridge Type, Mechanical, Oil-Lubricated, Double Floating, Self-Aligning. Silicon Carbide Rotating and Stationary Faces. Stainless Steel 316 Stationary Seat. Fluorocarbon Elastomers (DuPont Viton® or Equivalent). Stainless Steel 18-8 Cage and Spring. Maximum Temperature of Liquid Pumped 160°F (71°C).\*  
**Shaft Sleeve:** Alloy Steel 4130.  
**Priming Chamber:** Gray Iron 30 Housing w/Stainless Steel Float and Linkage.  
**Discharge Check Valve:** Ductile Iron Housing with Welded Nickel Seat and Buna-N Flapper.  
**Radial Bearing:** Open Single Row Ball.  
**Thrust Bearing:** Open Double Row Ball.  
**Bearing and Seal Cavity Lubrication:** SAE 30 Non-Detergent Oil.  
**Gaskets:** Vegetable Fiber.  
**O-Rings:** Buna-N.  
**Hardware:** Standard Plated Steel.  
**Bearing and Seal Cavity Oil Level Sight Gauges.**  
 \*Consult Factory for Applications Exceeding Maximum Pressure and/or Temperature Indicated.  
**Standard Equipment:** Belt-Driven Air Compressor. Hoisting Bail. Soundproof (EPA Average 72 dBA at 23 feet [7 meters] Under Load) Lightweight Aluminum Enclosure - Removable for Maintenance of Pump or Engine - w/Padlockable Door Panels. Combination Skid Base w/Fuel Tank. Full Feature Control Panel Single Ball Type Float Switch\*\*  
**Optional Equipment:** Battery. High Speed (55 MPH/89 KM/H) Single Axle Pneumatic-Tired Wheel Kit w/wo DOT-Approved Lights and Electric Brakes. Tandem Axle Over-the-Road Trailer (Meets DOT Requirements) Available w/Either Electric or Hydraulic Surge Brakes, Running Lights, Jack Stands and Safety Cables/Chains. Liquid Level Transducer.  
 \*\*50 Ft. (15 m) Standard Length; Dual Switches and Alternate Cable Lengths Available From the Factory.



**WARNING!**  
Do not use in explosive atmosphere or for pumping volatile flammable liquids.

**ENGINE SPECIFICATIONS**

**Model:** Isuzu 4LE2T.  
**EPA Tier:** Final Tier 4.  
**Type:** Four Cylinder, Four Cycle, Turbocharged, Charge Air Cooled, Liquid Cooled Diesel Engine.  
**Displacement:** 134 Cu. In. (2,2 Liters).  
**Lubrication:** Forced Circulation.  
**Air Cleaner:** Dry Type.  
**Fuel Tank:** 70 U.S. Gals. (265 Liters).  
**Full Load Operating Time:** 39.9 Hrs.  
**Starter:** 12V Electric.  
**Standard Features:** Muffler w/Weather Cap. DOC Exhaust After-Treatment System.  
**Engine Control Features:** Padlockable Box with Throttle Control, Tachometer, Coolant Temperature, Oil Pressure, Voltage and Overstart Indicators/Shutdowns. Manual/Stop/Auto Keyswitch. Audible Startup Warning Delay. Fuel Level Display/Alarm/Shutdown Electronic Fuel Level Sensor.

**ISUZU PUBLISHED PERFORMANCE:**  
 Maximum Gross Continuous BHP  
 48 (35.8 kW) @ 2400 RPM



**GORMAN-RUPP PUMPS**

www.grpumps.com

Specifications Subject to Change Without Notice

Printed in U.S.A.

**Specification Data**

**SECTION 42, PAGE 218**

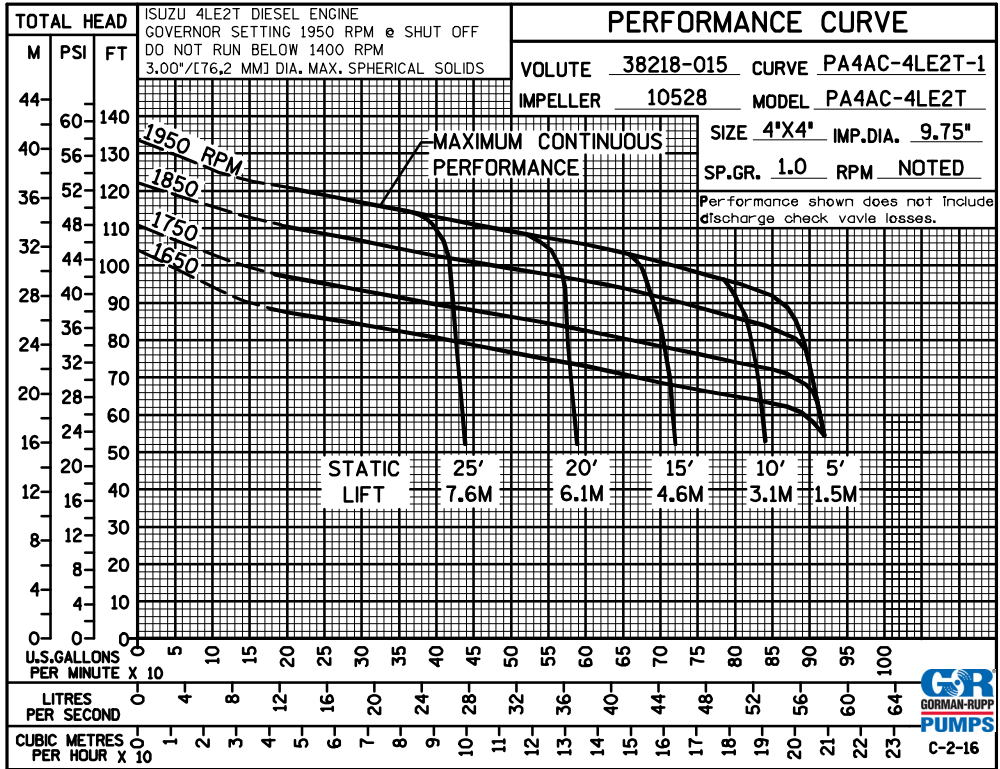
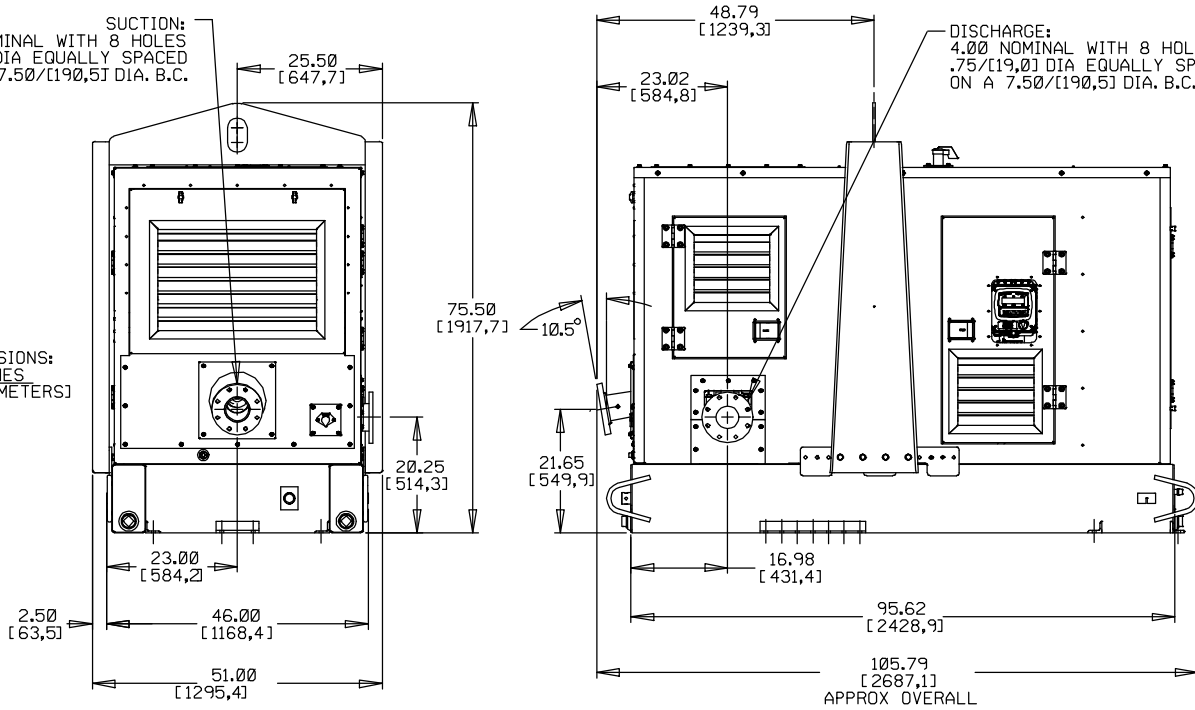
APPROXIMATE  
DIMENSIONS and WEIGHTS

**SKID BASE**                      **2-WHEEL**  
**NET WEIGHT:**                    3230 LBS. (1465,1 KG.)    3880 LBS. (1760 KG.)  
**SHIPPING WEIGHT:**           3430 LBS. (1555,8 KG.)    3880 LBS. (1760 KG.)  
**EXPORT CRATE SIZE:** 275 CU. FT. (7,8 CU. M.)

SUCTION:  
4.00 NOMINAL WITH 8 HOLES  
.75/[19,0] DIA EQUALLY SPACED  
ON A 7.50/[190,5] DIA. B.C.

DISCHARGE:  
4.00 NOMINAL WITH 8 HOLES  
.75/[19,0] DIA EQUALLY SPACED  
ON A 7.50/[190,5] DIA. B.C.

DIMENSIONS:  
INCHES  
[MILLIMETERS]



**GORMAN-RUPP PUMPS**

www.grpumps.com

Specifications Subject to Change Without Notice

Printed in U.S.A.