

ACDEU



# Diesel Engine Driven Priming Assisted Centrifugal Pump w/Autostart Model PA6A60-F5L Size 6" x 6"



Total Head		Capacity of Pump in U.S. Gallons per Minute (GPM) at Continuous Performance			
P.S.I.	Feet				
58.0	136	320	320	320	320
52.0	120	680	720	720	720
43.4	100	760	1030	1180	1180
34.7	80	790	1080	1340	1480
26.0	60	820	1125	1420	1640
17.3	40	840	1170	1480	1700
<b>Suction Lift</b>		<b>25'</b>	<b>20'</b>	<b>15'</b>	<b>10'</b>



SHOWN WITH OPTIONAL WHEEL KIT

**PUMP SPECIFICATIONS**

- Size:** 6" x 6" (152 mm x 152 mm) NPT - Female.
- Suction Head:** Gray Iron 30.
- Casing:** Gray Iron 30. Maximum Operating Pressure 99 psi (683 kPa).\*
- Semi-Open Type, Two Vane Impeller:** Ductile Iron 65-45-12.  
Handles 3" (76.2 mm) Diameter Spherical Solids.
- Impeller Shaft:** Stainless Steel 17-4 PH.
- Replaceable Wear Plate:** Carbon Steel 1015.
- Intermediate Bracket:** Gray Iron 30.
- Seal:** Mechanical, Oil-Lubricated, Double Floating Self-Aligning. Silicon Carbide Rotating and Stationary Faces. Stainless Steel 316 Stationary Seat. Fluorocarbon Elastomers (DuPont Viton® or Equivalent). Stainless Steel 18-8 Cage and Spring. Maximum Temperature of Liquid Pumped, 160°F (71°C).\*
- Shaft Sleeve:** Stainless Steel 17-4 PH.
- Priming Chamber:** Gray Iron 30.
- Discharge Check Valve:** Ductile Iron Housing w/Buna-N Flapper.
- Radial Bearing:** Open Single Ball.
- Thrust Bearing:** Open Double Ball.
- Bearing and Seal Lubrication:** SAE 30 Non-Detergent Oil.
- Flanges:** Gray Iron 30.
- Gaskets:** Resistant Synthetic Rubber, Cork, PTFE, Vegetable Fiber and Compressed Synthetic Fibers.
- O-Rings:** Buna-N.
- Hardware:** Standard Plated Steel.
- Bearing and Seal Cavity Oil Level Sight Gauges.**

\*Consult Factory for Applications Exceeding Maximum Pressure and/or Temperature Indicated.

**Standard Equipment:** Belt-Driven Air Compressor. Hoisting Bail. Combination Skid Base w/Fuel Tank. Strainer. Single Ball Type Float Switch.\*\*

**Optional Equipment:** Battery. Heated Priming Chamber Kit. High Speed (55 MPH/89 KM/H) Single Axle Pneumatic-Tired Wheel Kit w/wo DOT-Approved Lights and Electric Brakes. Single Axle Over-the-Road Trailer (Meets DOT Requirements) Available w/Either Electric or Hydraulic Surge Brakes, Running Lights, Jack Stands and Safety Chains/Cables. EPS w/Submersible Transducer Liquid Level Sensor (50 Ft. [15 M] Cable Standard, Alternate Lengths Available).

\*\*50 Ft. (15 m) Standard Length; Dual Switches and Alternate Cable Lengths Available From the Factory.

**WARNING!**

Do not use in explosive atmosphere or for pumping volatile flammable liquids.

**ENGINE SPECIFICATIONS**

- Model:** Deutz D914L5.
- Type:** Five Cylinder, Four Cycle, Air Cooled Diesel Engine.
- Displacement:** 329 Cu. In. (5,4 Liters).
- Governor:** Mechanical.
- Lubrication:** Forced Circulation.
- Air Cleaner:** Oil Bath.
- Oil Reservoir:** 15.8 U.S. Qts. (15 Liters) Dry;  
14.3 U.S. Qts. (13,5 Liters) Refill.
- Fuel Tank:** 65 U.S. Gallons (246 Liters).
- Full Load Operating Time:** 22.6 Hrs.
- Starter:** 12V Electric.

**Standard Features:** High Oil Temperature, Low Oil Pressure, V-belt, Alternator and Start Failure Safety Shut Down Switches/Indicators. Fuel Level Gauge. Throttle Control. Autostart Instrument Panel Includes: Temperature Gauge, Oil Pressure Gauge, Ammeter, Hourmeter, Tachometer, Manual/Stop/Auto Key Switch, 15 Amp Fuse, Audible Startup Warning Delay. Muffler w/Guard and Weather Cap.

**DEUTZ PUBLISHED PERFORMANCE:**

Maximum Gross Continuous B.H.P.  
91.8 (68.5 kW) @ 2300 RPM



**THE GORMAN-RUPP COMPANY • MANSFIELD, OHIO**

GORMAN-RUPP OF CANADA LIMITED • ST. THOMAS, ONTARIO, CANADA

www.grpumps.com

Specifications Subject to Change Without Notice

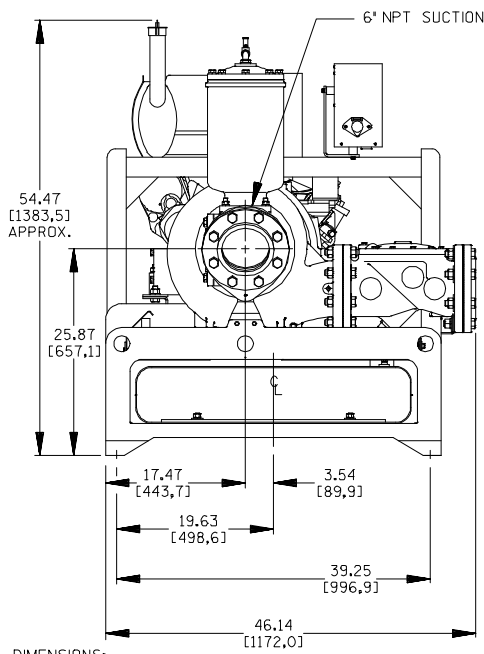
Printed in U.S.A.

**Specification Data**

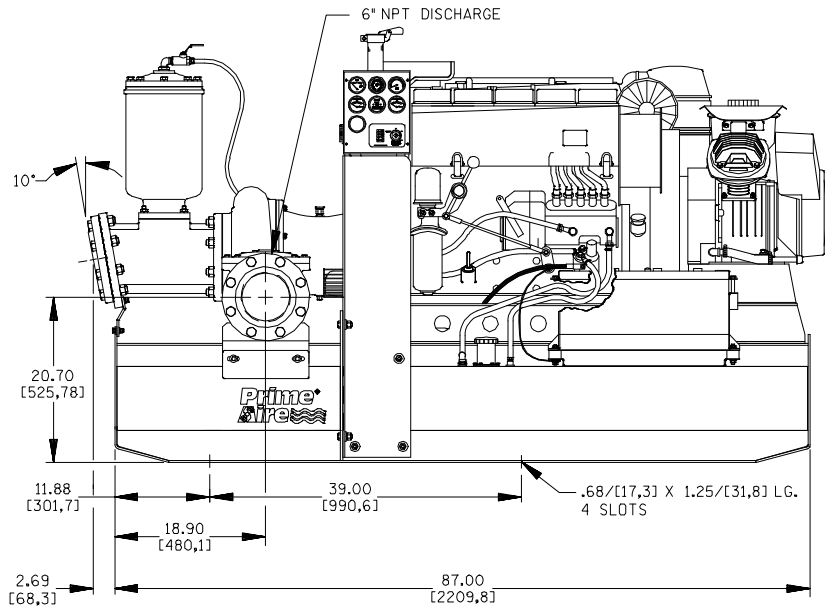
**SECTION 42, PAGE 800**

APPROXIMATE  
DIMENSIONS and WEIGHTS

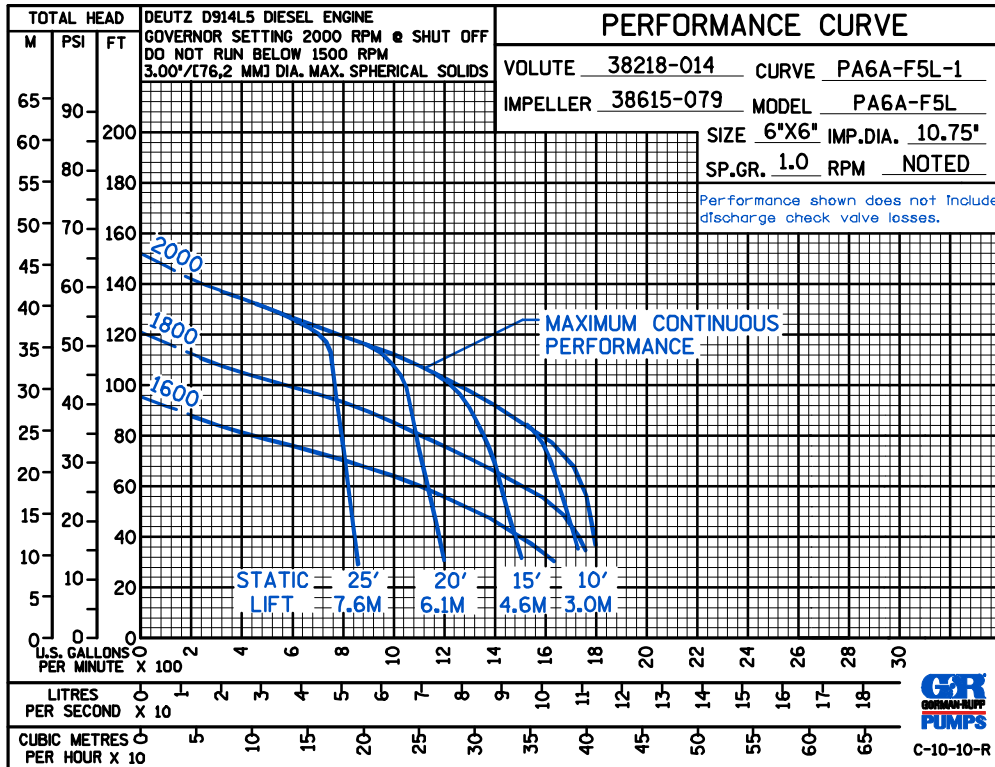
	<b>SKID BASE</b>	<b>2-WHEEL</b>
<b>NET WEIGHT:</b>	2940 LBS. (1333 KG.)	3249 LBS. (1474 KG.)
<b>SHIPPING WEIGHT:</b>	3240 LBS. (1470 KG.)	3249 LBS. (1474 KG.)
<b>EXPORT CRATE SIZE:</b>	130 CU. FT. (3,7 CU. M.)	390 CU. FT. (11 CU. M.)



DIMENSIONS:  
INCHES  
[MILLIMETERS]



POWERED BY:  
DEUTZ D914L5 DIESEL ENGINE



**THE GORMAN-RUPP COMPANY • MANSFIELD, OHIO**

GORMAN-RUPP OF CANADA LIMITED • ST. THOMAS, ONTARIO, CANADA

Specifications Subject to Change Without Notice

Printed in U.S.A.