

# Priming Assisted Centrifugal Pump w/Autostart



## Model PAH4B60-QSB4.5P Size 6" x 4"



| Total Head          |      | Capacity of Pump in U.S. Gallons per Minute (GPM) at Continuous Performance |            |            |             |
|---------------------|------|---|------------|------------|-------------|
| P.S.I.              | Feet |   |            |            |             |
| 101.9               | 235  | 400   | 400        | 400        | N/A         |
| 97.5                | 225  | 640   | 640        | 640        | N/A         |
| 86.7                | 200  | 920   | 1040       | 1040       | N/A         |
| 75.9                | 175  | 960   | 1235       | 1420       | 760         |
| 65.0                | 150  | 960   | 1245       | 1550       | 1220        |
| 54.2                | 125  | 960   | 1247       | 1570       | 1580        |
| 43.4                | 100  | 960   | 1265       | 1570       | 1770        |
| 32.5                | 75   | 960   | 1265       | 1575       | 1830        |
| 21.7                | 50   | 960   | 1270       | 1580       | 1840        |
| 10.8                | 25   | 960   | 1280       | 1580       | 1845        |
| <b>Suction Lift</b> |      | <b>25'</b>  | <b>20'</b> | <b>15'</b> | <b>±10'</b> |

‡Suction Lift Based On 1800 RPM Engine Speed.

### PUMP SPECIFICATIONS

**Size:** 6" x 4" (152 mm x 102 mm) Flanged.

**Casing:** Ductile Iron 65-45-12.

Maximum Operating Pressure 159 psi (1096 kPa).\*

**Enclosed Type, Two Vane Impeller:** Ductile Iron 65-45-12.

Handles 3" (76.2 mm) Diameter Spherical Solids.

**Suction Head:** Gray Iron 30.

**Suction Spool:** Gray Iron 30.

**Impeller Shaft:** Alloy Steel 4150M.

**Replaceable Wear Ring:** Ductile Iron 65-45-12.

**Pedestal:** Gray Iron 30.

**Seal Plate:** Gray Iron 30.

**Seal:** Mechanical, SAE 30 Non-Detergent Oil-Lubricated. Silicon Carbide Rotating Face and Stationary Seat. Fluorocarbon Elastomers (DuPont Viton® or Equivalent). Stainless Steel 316 Cage and Stainless Steel 18-8 Spring. Maximum Temperature of Liquid Pumped 160 F (71°C).\*

**Shaft Sleeve:** Stainless Steel 303/304.

**Priming Chamber:** Gray Iron 30 Housing w/Stainless Steel Float and Linkage.

**Discharge Check Valve:** Ductile Iron Housing w/Buna-N Flapper.

**Radial Bearing:** Open Roller.

**Thrust Bearing:** Open Double Ball.

**Bearing Cavity Lubrication:** Lithium EP2 Grease.

**Gaskets:** Vegetable Fiber.

**O-Rings:** Buna-N.

**Hardware:** Standard Plated Steel.

**Seal Cavity Oil Level Sight Gauges.**

\*Consult Factory for Applications Exceeding Maximum Pressure and/or Temperature Indicated.

**Standard Equipment:** Strainer. Gear-Driven Air Compressor. Hoisting Bail. Combination Skid Base w/Fuel Tank. Single Ball Type Float Switch.\*\*

**Optional Equipment:** Batteries (2 Req'd). NPT Threaded Flange Kit. Heated Priming Chamber Kit. Suction Vacuum and Discharge Pressure Gauge Kit. High Speed (55 MPH/89 KM/H) Single Axle Pneumatic-Tired Wheel Kit w/w/o DOT-Approved Lights and Electric Brakes. Tandem Axle Over-the-Road Trailer (Meets DOT Requirements) Available w/Either Electric or Hydraulic Surge Brakes, Running Lights, Jack Stands and Safety Chains/Cables. EPS w/Submersible Transducer Liquid Level Sensor (50 Ft. [15M] Cable Standard, Alternate Lengths Available).

\*\*50 Ft. (15 m) Standard Length; Dual Switches and Alternate Cable Lengths Available From the Factory.



**WARNING!**  
Do not use in explosive atmosphere or for pumping volatile flammable liquids.

### ENGINE SPECIFICATIONS

**Model:** Cummins QSB4.5P.

**Type:** Four Cylinder, Four Cycle, Turbocharged, Charge Air Cooled, Liquid Cooled Diesel Engine.

**Displacement:** 272 Cu. In. (4,5 liters).

**Governor:** Isochronous.

**Lubrication:** Forced Circulation.

**Air Cleaner:** Dry Type.

**Oil Reservoir:** 13.7 U.S. Qts. (13 liters) Dry; 11.6 U.S. Qts. (10 liters) Refill.

**Fuel Tank:** 88 U.S. Gals. (330 liters).

**Full Load Operating Time:** 14.6 Hrs.

**Starter:** 12V Electric.

**Standard Features:** Engine Enclosure. Low Oil Pressure and High Coolant Temperature Safety Shut Down Switches/Indicators. Autostart Instrument Panel Includes: Tachometer, Voltmeter, Hourmeter, Coolant Temperature Gauge, Oil Pressure Gauge, Manual/Stop/Auto Key Switch, 10 Amp Fuse for Overload Protection, Audible Startup Warning Delay, Muffler and Weather Cap. Pushbutton Throttle Control.

### CUMMINS PUBLISHED PERFORMANCE:

Maximum Gross Continuous BHP  
110 (82 kW) @ 2200 RPM



## GORMAN-RUPP PUMPS

www.grpumps.com

Specifications Subject to Change Without Notice

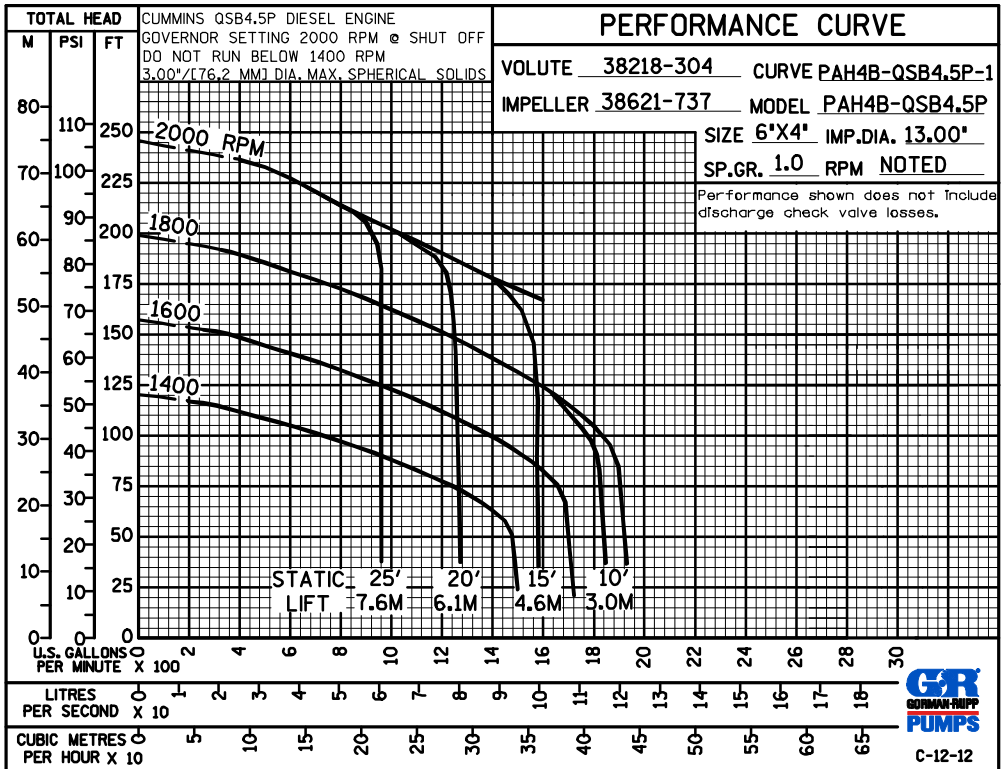
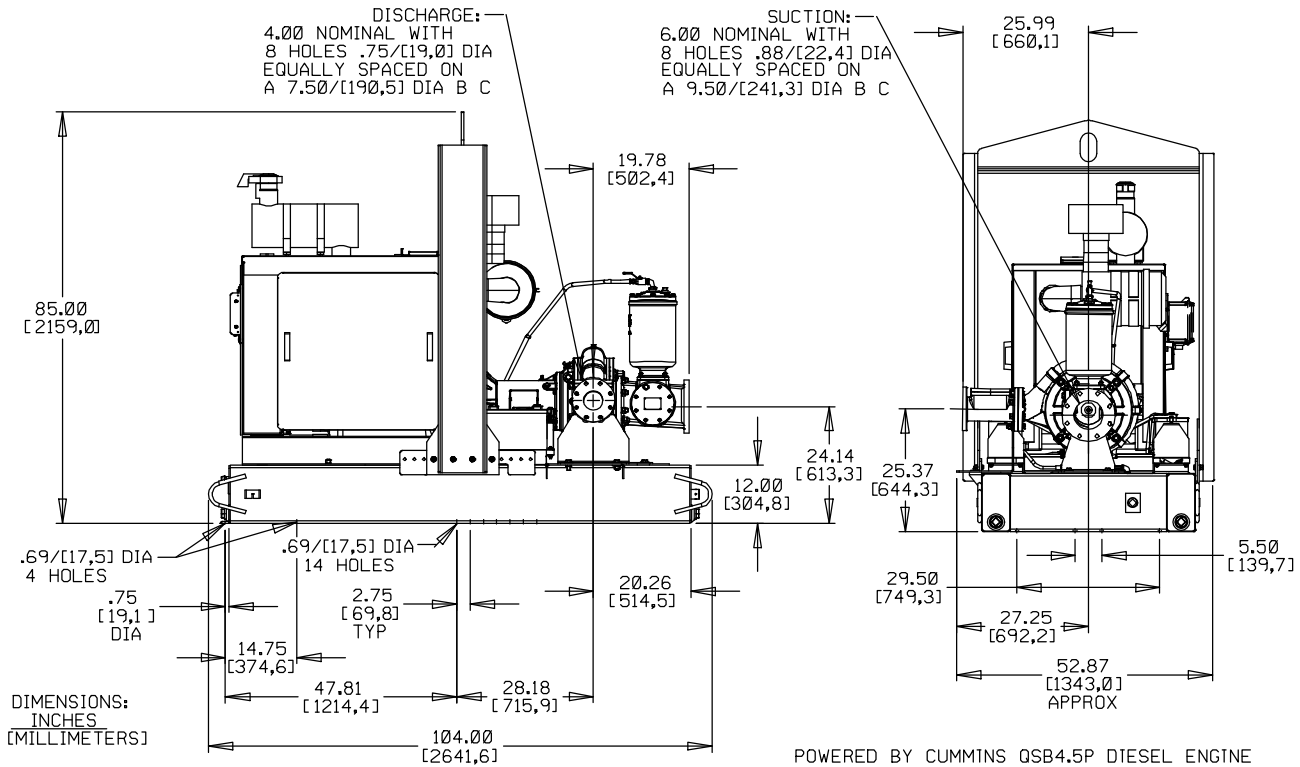
Printed in U.S.A.

**Specification Data**

APPROXIMATE  
DIMENSIONS and WEIGHTS

|                           |                          |                      |
|---------------------------|--------------------------|----------------------|
|                           | <b>SKID BASE</b>         | <b>2-WHEEL</b>       |
| <b>NET WEIGHT:</b>        | 3950 LBS. (1791 KG.)     | 4445 LBS. (2016 KG.) |
| <b>SHIPPING WEIGHT:</b>   | 4250 LBS. (1928 KG.)     | 4445 LBS. (2016 KG.) |
| <b>EXPORT CRATE SIZE:</b> | 341 CU. FT. (9,6 CU. M.) |                      |

SECTION 43, PAGE 205



**GORMAN-RUPP PUMPS**

www.grpumps.com

Specifications Subject to Change Without Notice

Printed in U.S.A.