



# Self Priming Centrifugal Pump w/Autostart

## Model T8A60S-F6L

Size 8" x 8"



125 M

Total Head		Capacity of Pump in U.S. Gallons per Minute (GPM) at Continuous Performance			
P.S.I.	Feet				
55.5	128	450	450	450	450
52.0	120	680	680	680	680
43.4	100	1180	1260	1280	1280
34.7	80	1280	1700	1850	1850
26.0	60	1300	1760	2220	2280
17.3	40	1325	1795	2300	2595
<b>Suction Lift</b>		<b>25'</b>	<b>20'</b>	<b>15'</b>	<b>10'</b>

PHOTO NOT AVAILABLE AT TIME OF PUBLISHING

### PUMP SPECIFICATIONS

**Size:** 8" x 8" (203 mm x 203 mm) Flanged.  
**Casing:** Gray Iron 30.  
 Maximum Operating Pressure 92 psi (634 kPa).  
**Semi-Open Type, Two Vane Impeller:** Ductile Iron 65-45-12.  
 Handles 3" (76,2 mm) Diameter Spherical Solids.  
**Impeller Shaft:** Stainless Steel 17-4 PH.  
**Replaceable Wear Plate:** Gray Iron 30.  
**Removable Adjustable Cover Plate:** Gray Iron 30.  
**Removable Inspection Cover Plate:** Gray Iron 30; 20 lbs. (9,1 kg.).  
**Flap Valve:** Neoprene w/Steel Reinforcement.  
**Drive Flange:** Ductile Iron 65-45-12.  
**Seal Plate:** Gray Iron 30.  
**Shaft Sleeve:** Alloy Steel 4130.  
**Seal:** Cartridge Type, Mechanical, Oil-Lubricated, Double Floating, Self-Aligning. Silicon Carbide Rotating and Stationary Faces. Stainless Steel 316 Stationary Seat. Fluorocarbon Elastomers (DuPont Viton® or Equivalent). Stainless Steel 18-8 Cage and Spring. Maximum Temperature of Liquid Pumped 160°F (71°C).  
**Bearing Housing:** Gray Iron 30.  
**Radial/Thrust Bearings:** Open Double Ball.  
**Bearing and Seal Cavity Lubrication:** SAE 30 Non-Detergent Oil.  
**Flanges:** Gray Iron 30.  
**Gaskets:** Buna-N, Compressed Synthetic Fibers, PTFE, Cork, and Rubber.  
**O-Rings:** Buna-N.  
**Hardware:** Standard Plated Steel.  
**Brass Pressure Relief Valve.**  
**Bearing and Seal Cavity Oil Level Sight Gauges.**  
**Standard Equipment:** Hoisting Bail. 90° Discharge Elbow. Strainer.  
**Single Ball Type Float Switch.** Combination Skid Base w/Fuel Tank\*\*  
*\*\*50 Ft. (15 m) Standard Length; Dual Switches and Alternate Cable Lengths Available From the Factory.*  
**Optional Equipment:** Battery. G-R Hard Iron Impeller, Seal Plate and Wear Plate. High Speed (55 MPH/89 KM/H) Single Axle Pneumatic-Tired Wheel Kit w/wo DOT-Approved Lights and Electric Brakes. Single Axle Over-the-Road Trailer (Meets DOT Requirements) Available w/Either Electric or Hydraulic Surge Brakes, Running Lights, Jack Stands and Safety Cables. EPS w/Submersible Transducer Liquid Level Sensor (50 Ft. [15 M] Cable Standard, Alternate Lengths Available).  
*\*Consult Factory for Applications Exceeding Maximum Pressure and/or Temperature Indicated.*

**WARNING!**

Do not use in explosive atmosphere or for pumping volatile flammable liquids.

### ENGINE SPECIFICATIONS

**Model:** Deutz D914L6.  
**Type:** Six Cylinder, Four Cycle, Air Cooled Diesel Engine.  
**Displacement:** 395 Cu. In. (6,5 Liters).  
**Governor:** Mechanical.  
**Lubrication:** Forced Circulation.  
**Air Cleaner:** Oil Bath.  
**Oil Reservoir:** 16.9 U.S. Qts. (16,0 Liters) Dry; 15.3 U.S. Qts. (14,5 Liters) Refill.  
**Fuel Tank:** 88 U.S. Gallons (333 Liters).  
**Full Load Operating Time:** 24 Hrs.  
**Starter:** 12 Volt Electric.  
**Standard Features:** High Oil Temperature, Low Oil Pressure, V-belt, Alternator and Start Failure Safety Shut Down Switches/Indicators. Fuel Level Gauge. Throttle Control. Autostart Instrument Panel Includes: Temperature Gauge, Oil Pressure Gauge, Ammeter, Hourmeter, Tachometer, Manual/Stop/Auto Key Switch, 15 Amp Fuse, Audible Startup Warning Delay. Muffler w/Guard and Weather Cap.  
**DEUTZ PUBLISHED PERFORMANCE:**  
 Maximum Gross Continuous B.H.P.  
 100.4 (74.9 kW) @ 2300 RPM



GORMAN-RUPP PUMPS

www.grpumps.com

Specifications Subject to Change Without Notice

Printed in U.S.A.

# Specification Data

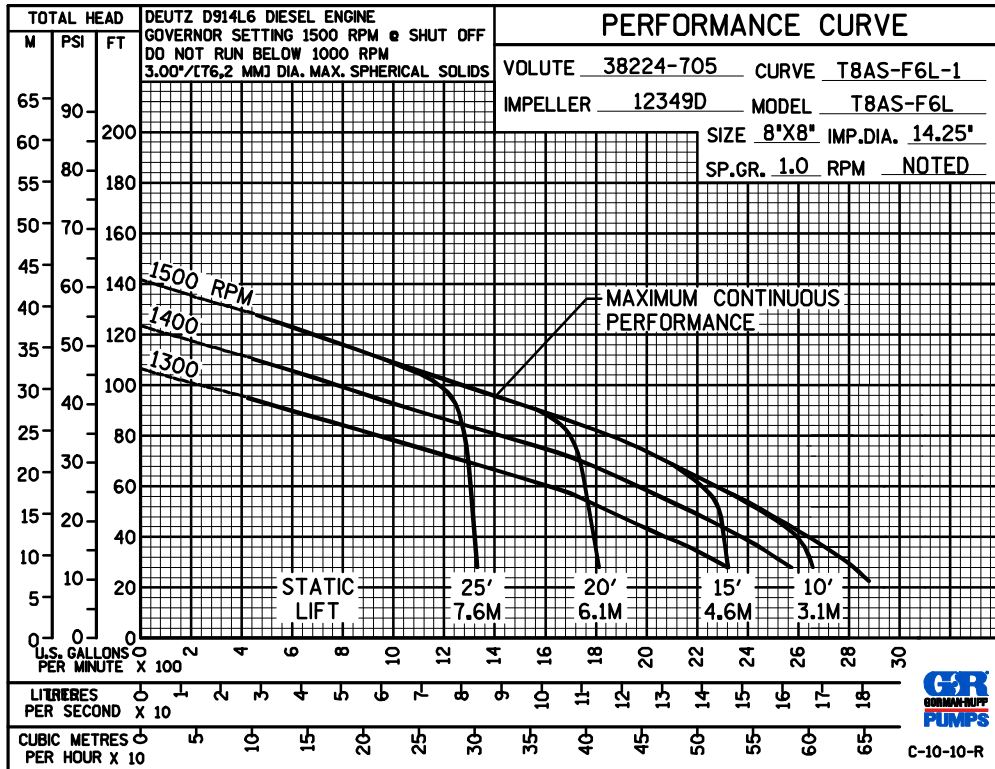
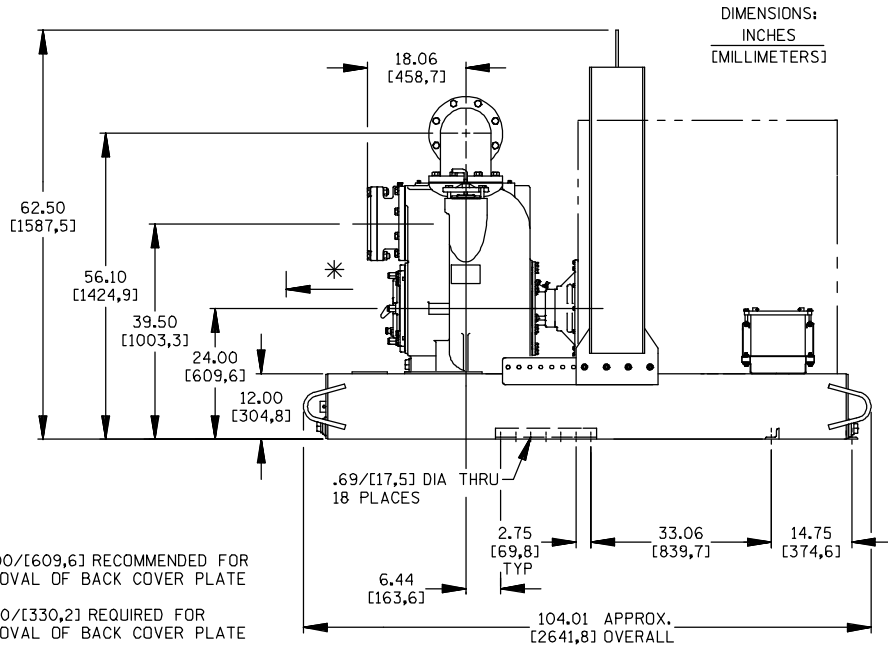
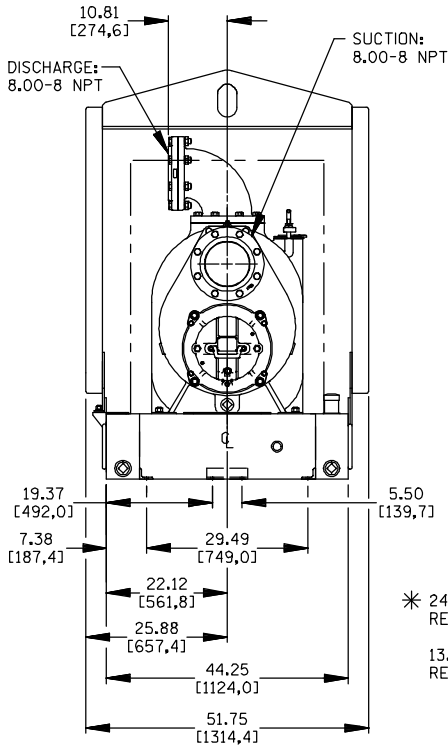
SECTION 45, PAGE 1645

APPROXIMATE DIMENSIONS and WEIGHTS

NET WEIGHT:  
SHIPPING WEIGHT:  
EXPORT CRATE SIZE:

SKID BASE  
4385 LBS. (1989 KG.)  
4585 LBS. (2080 KG.)  
288 CU. FT. (8,1 CU. M.)

2-WHEEL  
4845 LBS. (2198 KG.)  
4845 LBS. (2198 KG.)



GORMAN-RUPP PUMPS

www.grpumps.com

Specifications Subject to Change Without Notice

Printed in U.S.A.