



**Self Priming Centrifugal Pump  
w/Autostart  
Model T6A60S-ZPP857-ESP  
Size 6" x 6"**



Total Head		Capacity of Pump in U.S. Gallons per Minute (GPM) at Continuous Performance				
P.S.I.	Feet					
59.0	136	400	400	400	400	400
52.0	120	730	760	760	760	760
43.4	100	745	1045	1180	1180	1180
34.7	80	760	1060	1290	1290	1590
26.0	60	770	1070	1300	1495	1620
17.3	40	780	1080	1305	1510	1640
8.7	20	800	1090	1320	1520	1650
<b>Suction Lift</b>		<b>25'</b>	<b>20'</b>	<b>15'</b>	<b>10'</b>	<b>5'</b>

PHOTO NOT AVAILABLE AT TIME OF PUBLISHING

**PUMP SPECIFICATIONS**

**Size:** 6" x 6" (152 mm x 152 mm) NPT Male.  
**Casing:** Gray Iron 30. Maximum Operating Pressure 98 psi (676 kPa).\*  
**Semi-Open Type, Two Vane Impeller:** Ductile Iron 65-45-12.  
 Handles 3" (76,2 mm) Diameter Spherical Solids.  
**Impeller Shaft:** Stainless Steel 17-4 PH.  
**Replaceable Wear Plate:** Carbon Steel ASTM A36.  
**Adjustable Back Cover Plate:** Gray Iron 30.  
**Removable Inspection Cover Plate:** Gray Iron 30; 20 lbs. (9,1 kg.).  
**Flap Valve:** Neoprene w/Steel Reinforcing.  
**Seal Plate:** Gray Iron 30.  
**Shaft Sleeve:** Alloy Steel 4130.  
**Seal:** Cartridge Type, Mechanical, Oil-Lubricated, Double Floating, Self-Aligning. Silicon Carbide Rotating and Stationary Faces. Stainless Steel 316 Stationary Seat. Fluorocarbon Elastomers (DuPont Viton® or Equivalent). Stainless Steel 316 Cage and Spring. Maximum Temperature of Liquid Pumped 160°F (71°C).\*  
**Bearing Housing:** Gray Iron 30.  
**Radial Bearing:** Open Single Ball.  
**Thrust Bearing:** Open Double Ball.  
**Bearing and Seal Cavity Lubrication:** SAE 30 Non-Detergent Oil.  
**Flanges:** Gray Iron 30.  
**Gaskets:** Buna-N, Compressed Synthetic Fibers, PTFE, Vegetable Fiber, Cork, and Rubber.  
**O-Rings:** Buna-N.  
**Hardware:** Standard Plated Steel.  
**Brass Pressure Relief Valve.**  
**Bearing and Seal Cavity Oil Level Sight Gauges.**  
*\*Consult Factory for Applications Exceeding Maximum Pressure and/or Temperature Indicated.*  
**Standard Equipment:** Natural Gas Pressure Regulator. Solar Battery Maintenance Kit. Soundproof (EPA Average 73 dBA at 23 feet [7 meters] Under Load). Lightweight Aluminum Enclosure - Removable for Maintenance of Pump or Engine - w/Padlockable Door Panels. Spill Containment Base w/Integral Drains and Fork Lift Pockets, [Full Feature Control Panel](#) w/Electronic Suction and Discharge Pressure Gauges. Automatic Air Release Valve with Check Valve. 90° Discharge Elbow. Liquid Level Transducer.\*\*  
**Optional Equipment:** Battery. LP Gas Pressure Regulator. Cold Weather Kit.  
*\*\*100 Ft. (30 m) Standard Length; Dual Switches Available From the Factory.*



**ENGINE SPECIFICATIONS**

**Model:** Zenith Model ZPP857.  
 Zenith Engine ZPP NA 857 – (For Standby Use Only)  
**Type:** Eight Cylinder Power Unit Dual Fuel (Natural Gas/LP Gas).  
**Displacement:** 350 Cu. In. (5.7 Liters).  
**Lubrication:** Forced Circulation.  
**Air Cleaner:** Dry Type.  
**Fuel Consumption at Continuous Performance:**  
**Natural Gas:** 1,141 CFH (21719 L/hr) @ 100% Volume.  
**LP Gas:** 1,142,038 BTU/hr @ 100% Volume.  
**Starter:** 12V Electric.  
**Engine Control Features:** Throttle Control, Tachometer, Coolant Temperature, Oil Pressure, Voltage and Overstart Indicators/Shutdowns. Dual Fuel Toggle Switch. Manual/Stop/Auto Keyswitch. Audible Startup Warning Delay. Suction Vacuum/Discharge Pressure Displays.

**ZENITH PUBLISHED PERFORMANCE:**

Maximum Continuous B.H.P.  
124 (92,5 kW) @ 2400 RPM



**GORMAN-RUPP PUMPS**

www.grpumps.com

Specifications Subject to Change Without Notice

Printed in U.S.A.

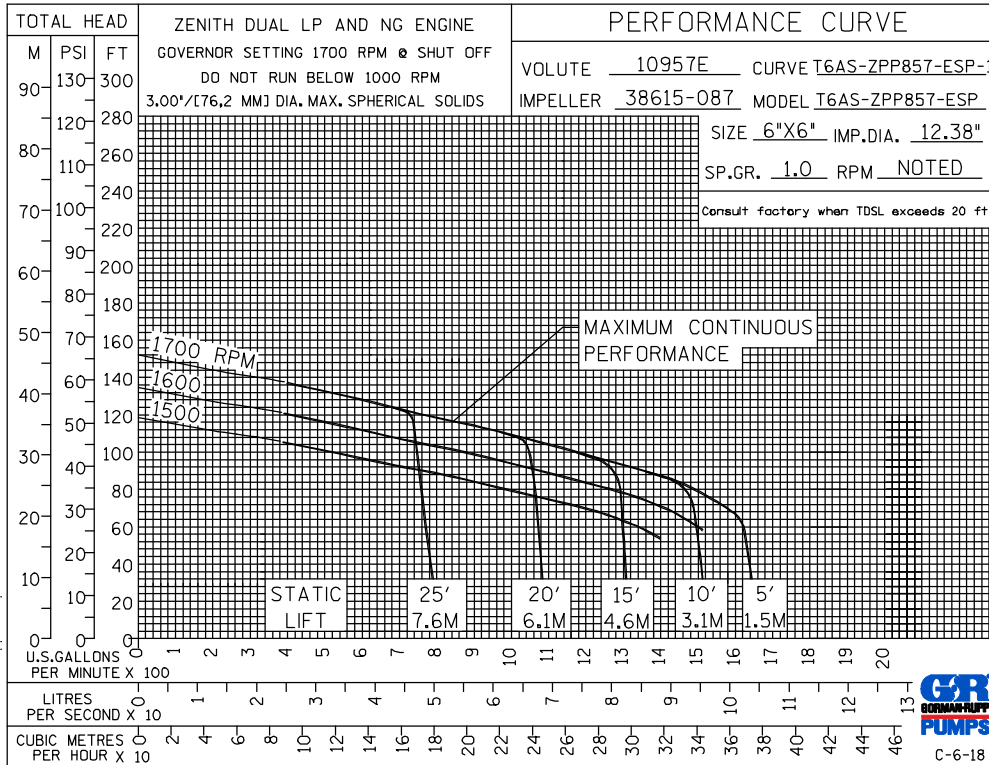
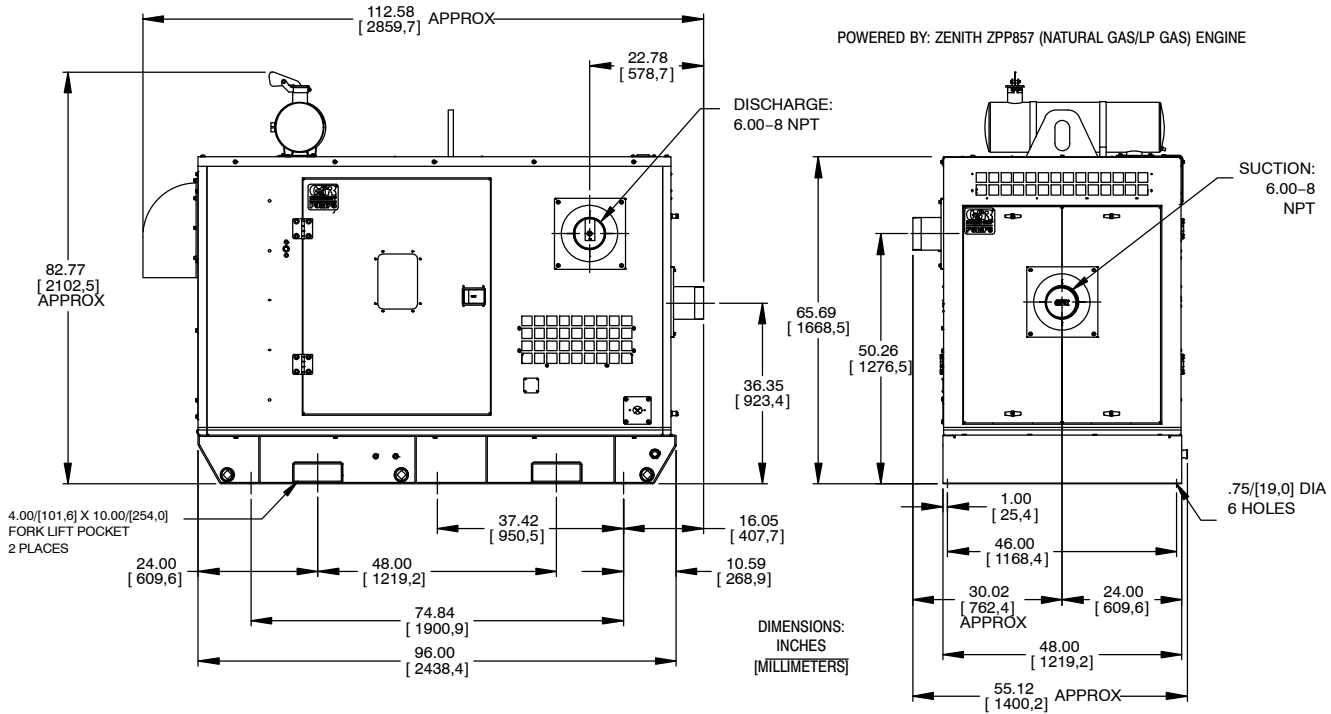
**Specification Data**

**SECTION 48, PAGE 100**

APPROXIMATE  
DIMENSIONS and WEIGHTS

**NET WEIGHT:**  
**SHIPPING WEIGHT:**  
**EXPORT CRATE SIZE:**

**3980 LBS. (1805 KG.)**  
**4180 LBS. (1896 KG.)**  
**347 CU. FT. (9,8 CU. M.)**



**GORMAN-RUPP PUMPS**

www.grpumps.com

Specifications Subject to Change Without Notice

Printed in U.S.A.