

Basic Pedestal

Self Priming Centrifugal Pump



Model 84A2-B

Size 4" x 4"

PUMP SPECIFICATIONS

Size: 4" x 4" (102 mm x 102 mm) NPT - Female.

Casing: Gray Iron 30.

Maximum Operating Pressure 82 psi (565 kPa).*

Semi-Open Type, Three Vane Impeller: Gray Iron 30.

Handles 1 1/8" (28,7 mm) Diameter Spherical Solids.

Impeller Shaft: Alloy Steel 4150.

Replaceable Wear Plate: Carbon Steel 1015.

Pedestal: Gray Iron 30.

Seal Plate: Gray Iron 30.

Seal Liner: Copper Alloy C26000.

Flap Valve: Neoprene and Steel.

Radial Bearing: Open Single Row Ball.

Thrust Bearing: Open Double Row Ball.

Bearing Lubrication: SAE 30 Non-Detergent Oil.

Suction Flange: Gray Iron 30.

Gaskets: Synthetic Fiber.

O-Rings: Buna-N

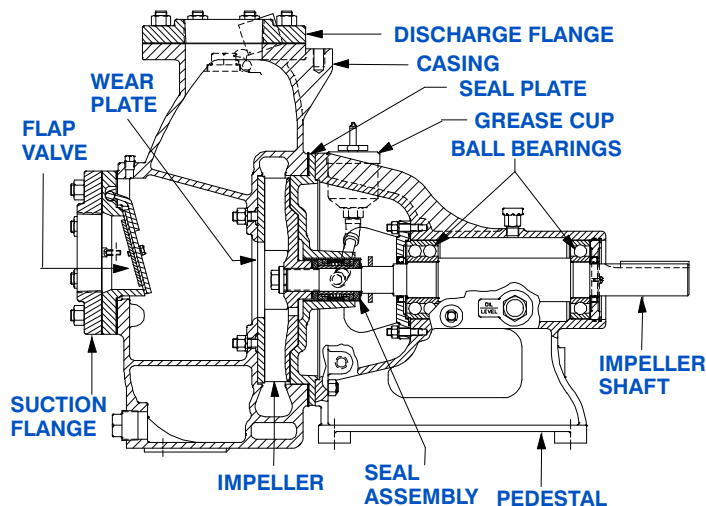
Hardware: Standard Plated Steel and Stainless Steel.

Oil Level Sight Gauge.

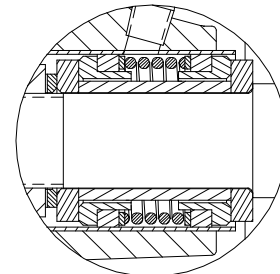
Strainer.

Optional Equipment: 120/240 Volt Casing Heater. ASA Suction and Discharge Spool Flange Kit. DIN 2527 (PN 16) Suction and Discharge Spool Flange Kit.

*Consult Factory for Applications Exceeding Maximum Pressure and/or Temperature Indicated.



SEAL DETAIL Double, Grease Lubricated with Spring-Loaded Grease Cup. Sintered Bronze Stationary Seal Seats. Steel Rotating Faces. Neoprene Packing Rings. Maximum Temperature of Liquid Pumped, 110°F (43°C). Maximum Suction Pressure 10 psi (69 kPa).*



GORMAN-RUPP PUMPS

www.grpumps.com

Specifications Subject to Change Without Notice

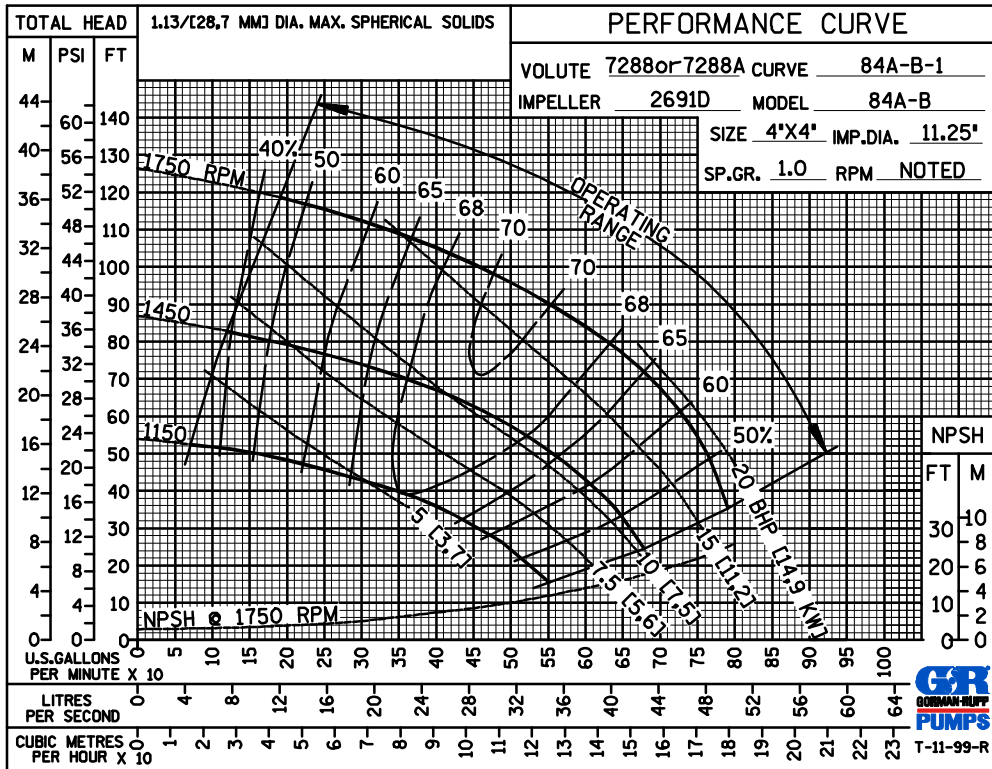
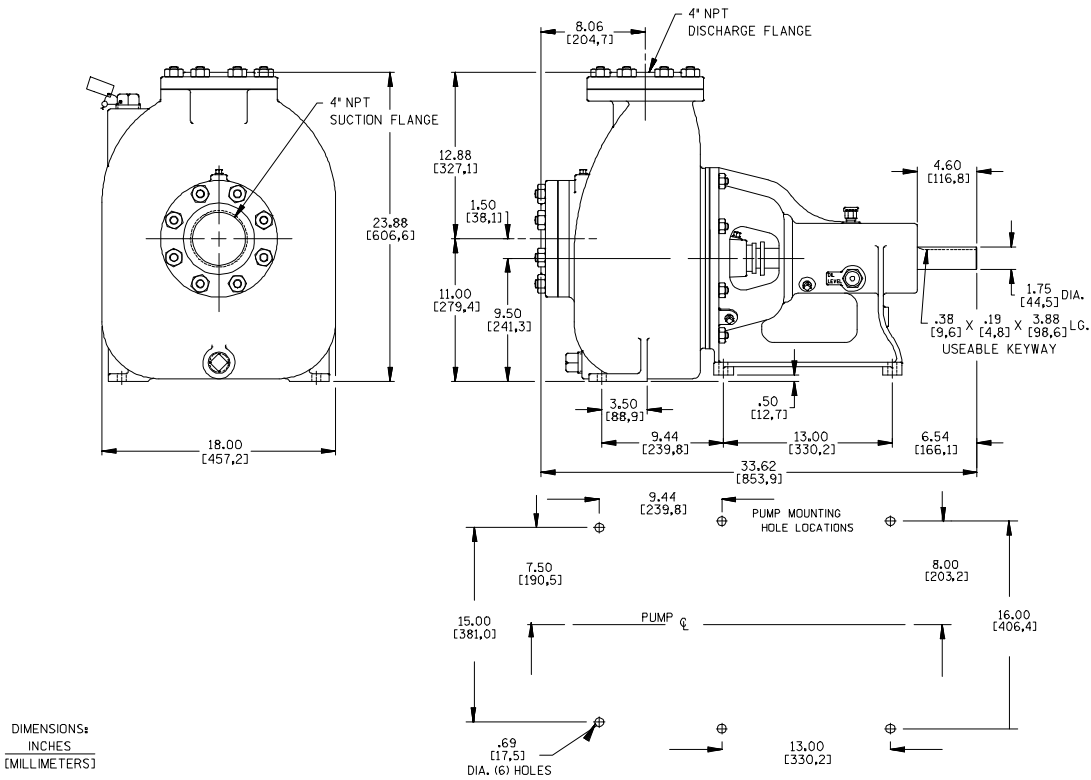
Printed in U.S.A.

Specification Data

SECTION 50, PAGE 1800

APPROXIMATE
DIMENSIONS and WEIGHTS

NET WEIGHT: 418 LBS. (190 KG.)
SHIPPING WEIGHT: 450 LBS. (204 KG.)
EXPORT CRATE: 18 CU. FT. (0,5 CU. M.)



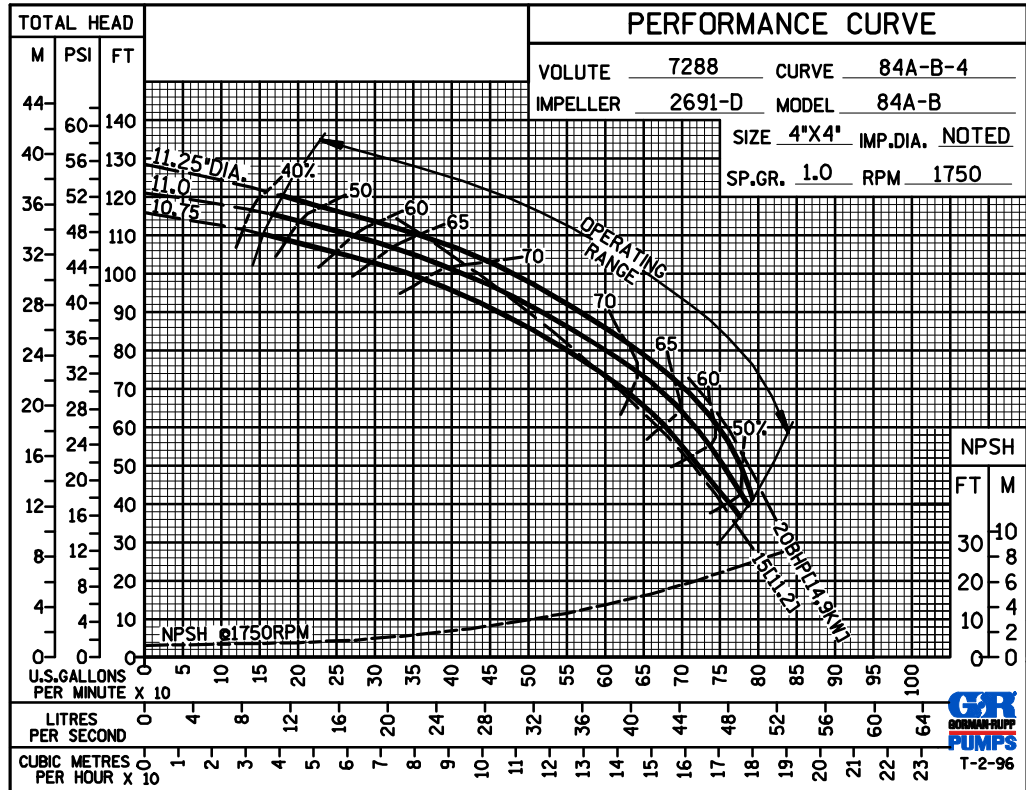
GORMAN-RUPP PUMPS

www.grpumps.com

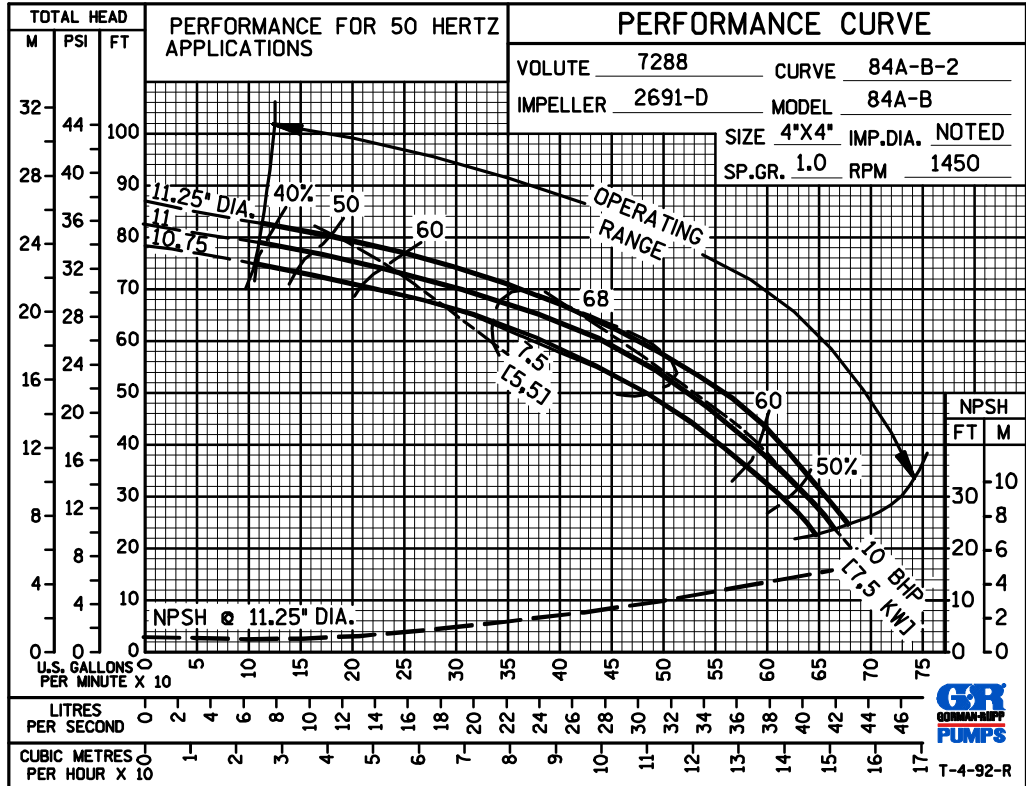
Specifications Subject to Change Without Notice

Printed in U.S.A.

TRIMMED
IMPELLER



50 HERTZ
PERFORMANCE
BASED ON
WATER



GORMAN-RUPP PUMPS

www.grpumps.com

Specifications Subject to Change Without Notice

Printed in U.S.A.