



# Self Priming Centrifugal Pump

## Models 16A9-B and 16A22-B

### Size 6" x 6"

#### PUMP SPECIFICATIONS

**Size:** 6" x 6" (152 mm x 152 mm) NPT - Female.

**Casing:** Stainless Steel 316.

Maximum Operating Pressure 81 psi (558 kPa).\*

**Semi-Open Type, Two Vane Impeller:** Stainless Steel 316.

Handles 2 1/2" (63,5 mm) Diameter Spherical Solids.

**Impeller Shaft:** Stainless Steel 17-4PH.

**Replaceable Wear Plate:** Stainless Steel 316.

**Removable Cover Plate:** Stainless Steel 316; 60 lbs. (27 kg).

**Pedestal:** Gray Iron 30.

**Seal Plate:** Stainless Steel 316.

**Seal Sleeve:** Stainless Steel 17-4PH.

**Flap Valve:** Fluorocarbon Elastomers (DuPont Viton® or Equivalent) and Stainless Steel 316.

**Radial Bearing:** Open Single Row Ball.

**Thrust Bearing:** Open Double Row Ball.

**Bearing Lubrication:** SAE 30 Non-Detergent Oil.

**Flanges:** Stainless Steel 316.

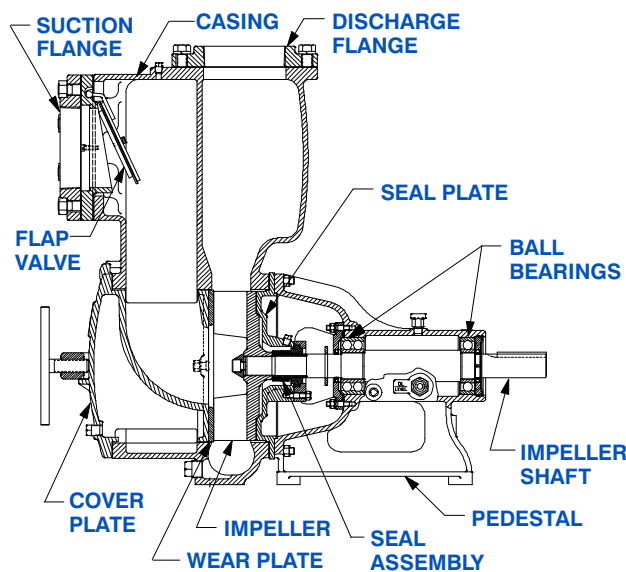
**Gaskets:** PTFE and Fluorocarbon (DuPont Teflon® and Viton® or Equivalents).

**Internal Wetted Hardware:** Stainless Steel 316.

**External Hardware:** Standard Plated Steel; Stainless Steel 316.

**Optional Equipment:** Consult Factory.

*\*Consult Factory for Applications Exceeding Maximum Pressure and/or Temperature Indicated.*



16A9-B SHOWN

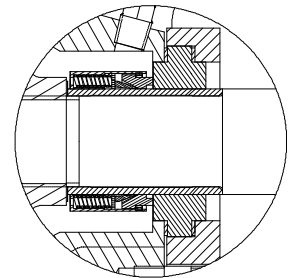
#### 16A9-B SEAL DETAIL

Type 9, Mechanical, Self Lubricated. Tungsten Carbide Rotating and Tungsten Carbide Stationary Faces. Stainless Steel 316 Cage and Spring. PTFE

Elastomers (DuPont Teflon® or Equivalent).

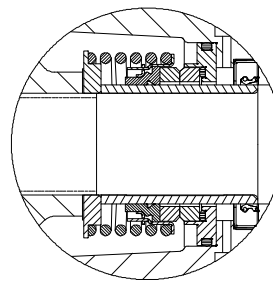
Maximum Temperature of Liquid

Pumped, 160°F (71°C).\*



#### 16A22-B SEAL DETAIL

Mechanical, Oil-Lubricated, Double Floating, Self-Aligning. Tungsten Titanium Carbide Rotating and Stationary Faces. Stainless Steel 316 Stationary Seat. Fluorocarbon Elastomers (DuPont Viton® or Equivalent). Stainless Steel 18-8 Cage and Spring. Maximum Temperature of Liquid Pumped, 160°F (71°C).\*



THE GORMAN-RUPP COMPANY • MANSFIELD, OHIO

GORMAN-RUPP OF CANADA LIMITED • ST. THOMAS, ONTARIO, CANADA

www.grpumps.com

Specifications Subject to Change Without Notice

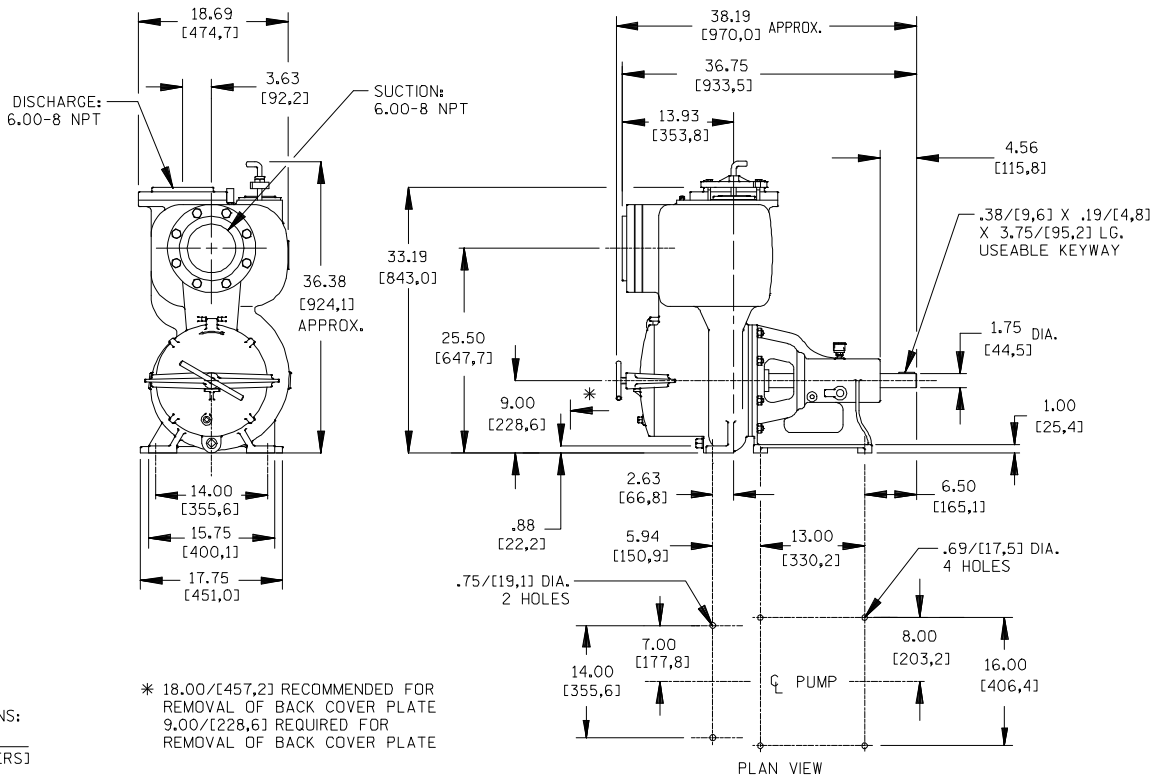
Printed in U.S.A.

**Specification Data**

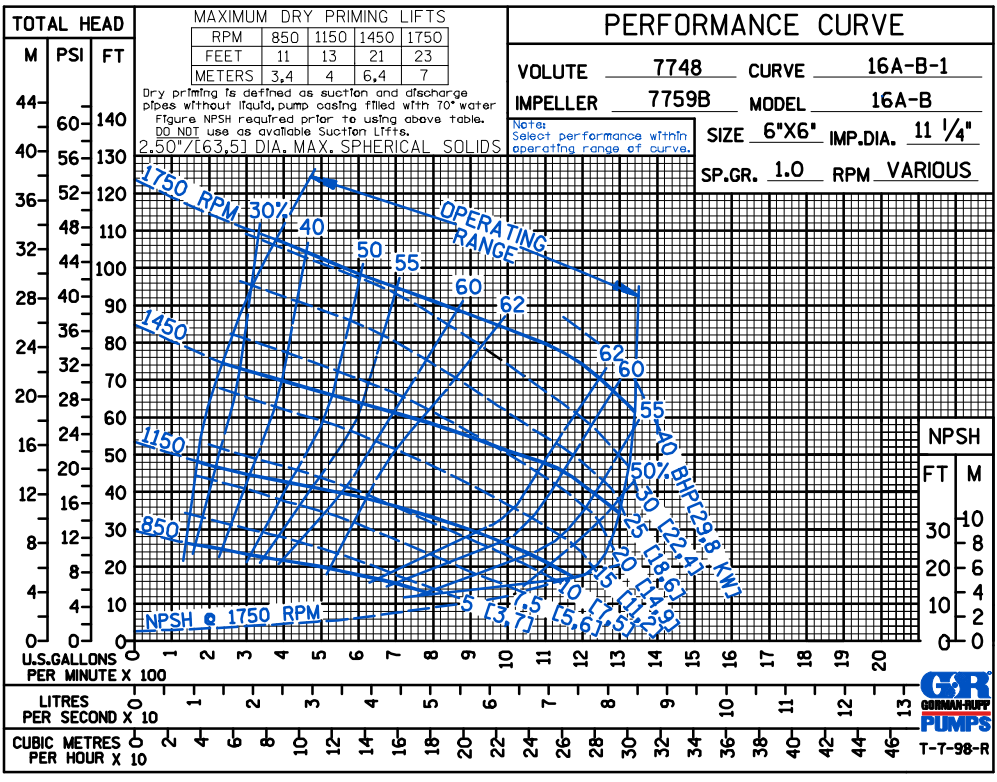
**SECTION 55, PAGE 804**

APPROXIMATE  
DIMENSIONS and WEIGHTS

**NET WEIGHT: 775 LBS. (351 KG.)**  
**SHIPPING WEIGHT: 826 LBS. (375 KG.)**  
**EXPORT CRATE SIZE: 29.8 CU. FT. (0,84 CU. M.)**



DIMENSIONS:  
INCHES  
[MILLIMETERS]



**THE GORMAN-RUPP COMPANY • MANSFIELD, OHIO**

GORMAN-RUPP OF CANADA LIMITED • ST. THOMAS, ONTARIO, CANADA

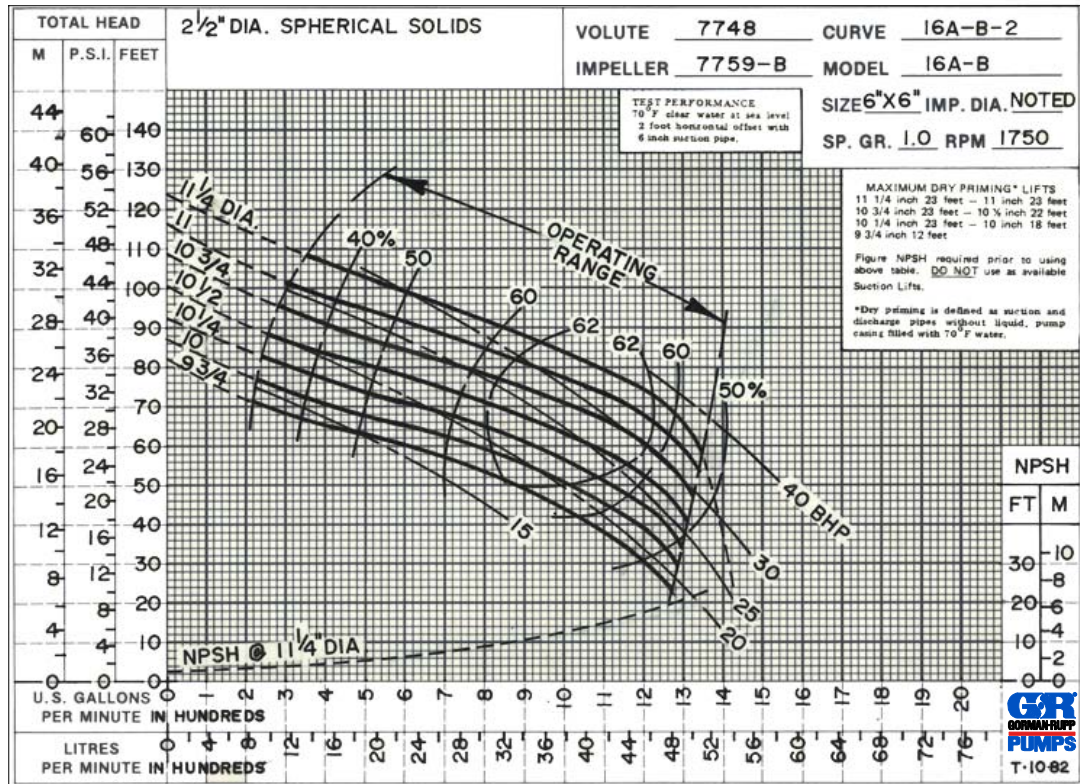
Specifications Subject to Change Without Notice

Printed in U.S.A.

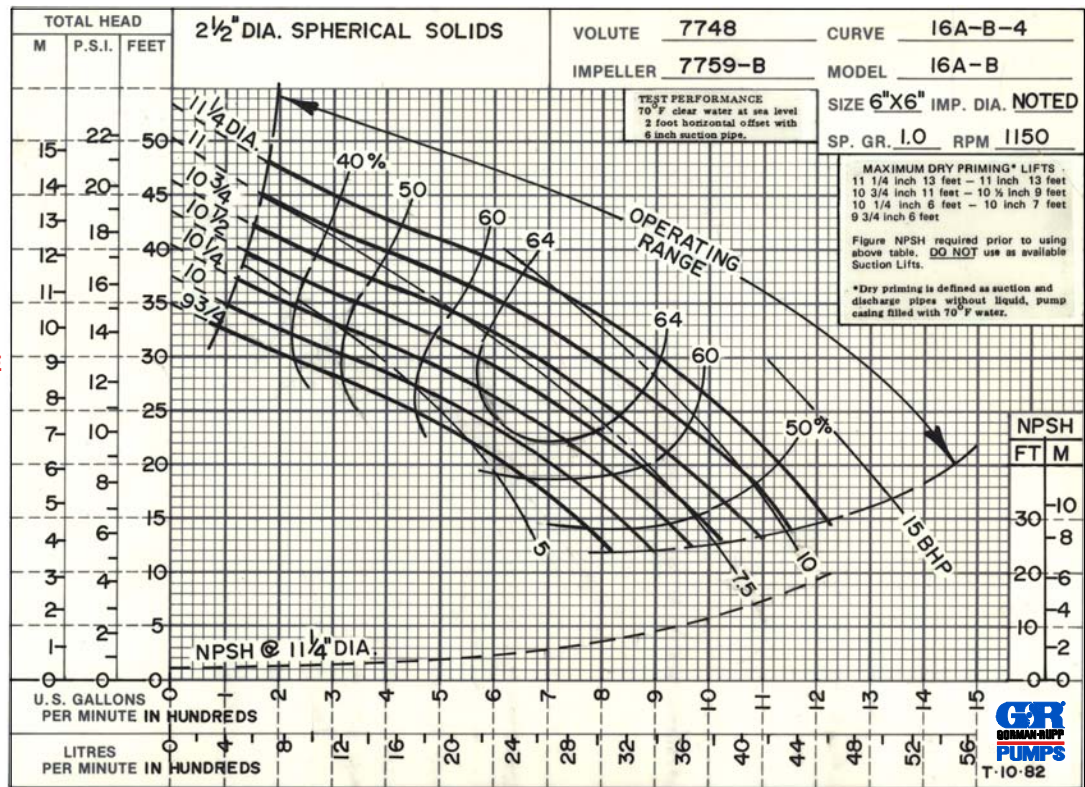


AC DE

TRIMMED  
IMPELLER



60 HERTZ  
PERFORMANCE  
BASED ON  
WATER



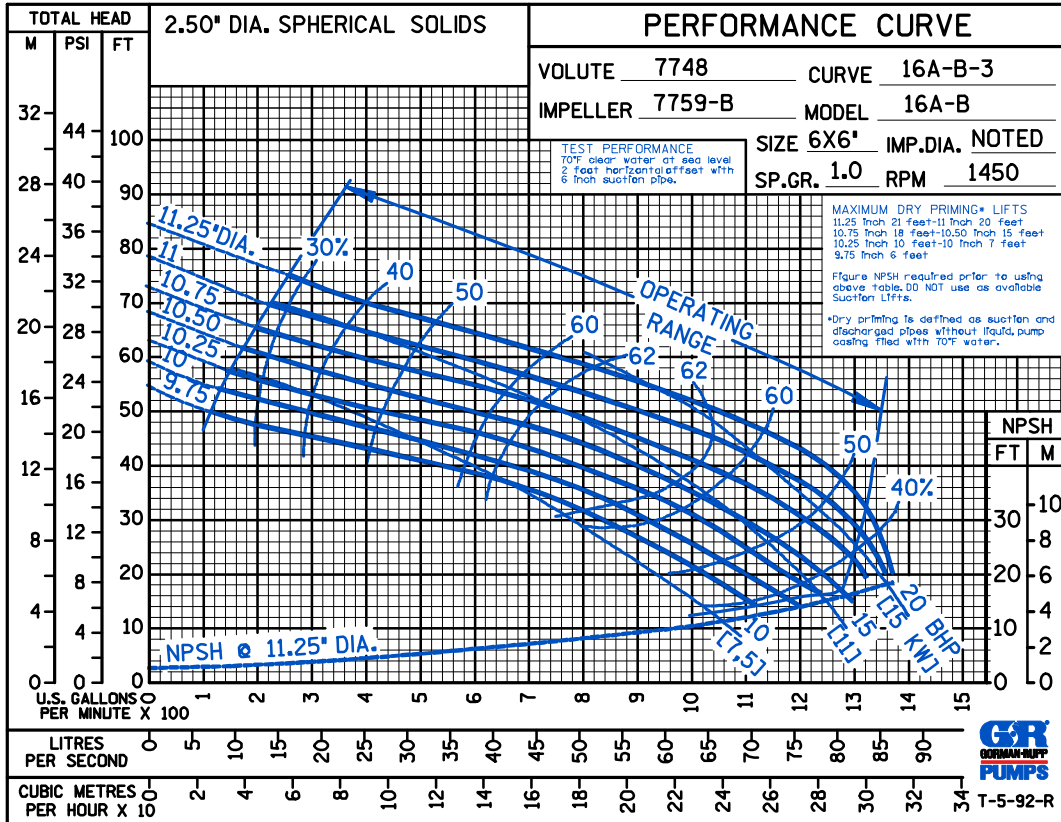
THE GORMAN-RUPP COMPANY • MANSFIELD, OHIO

GORMAN-RUPP OF CANADA LIMITED • ST. THOMAS, ONTARIO, CANADA

Specifications Subject to Change Without Notice

Printed in U.S.A.

A C D E



THE GORMAN-RUPP COMPANY • MANSFIELD, OHIO

GORMAN-RUPP OF CANADA LIMITED • ST. THOMAS, ONTARIO, CANADA

Specifications Subject to Change Without Notice

Printed in U.S.A.