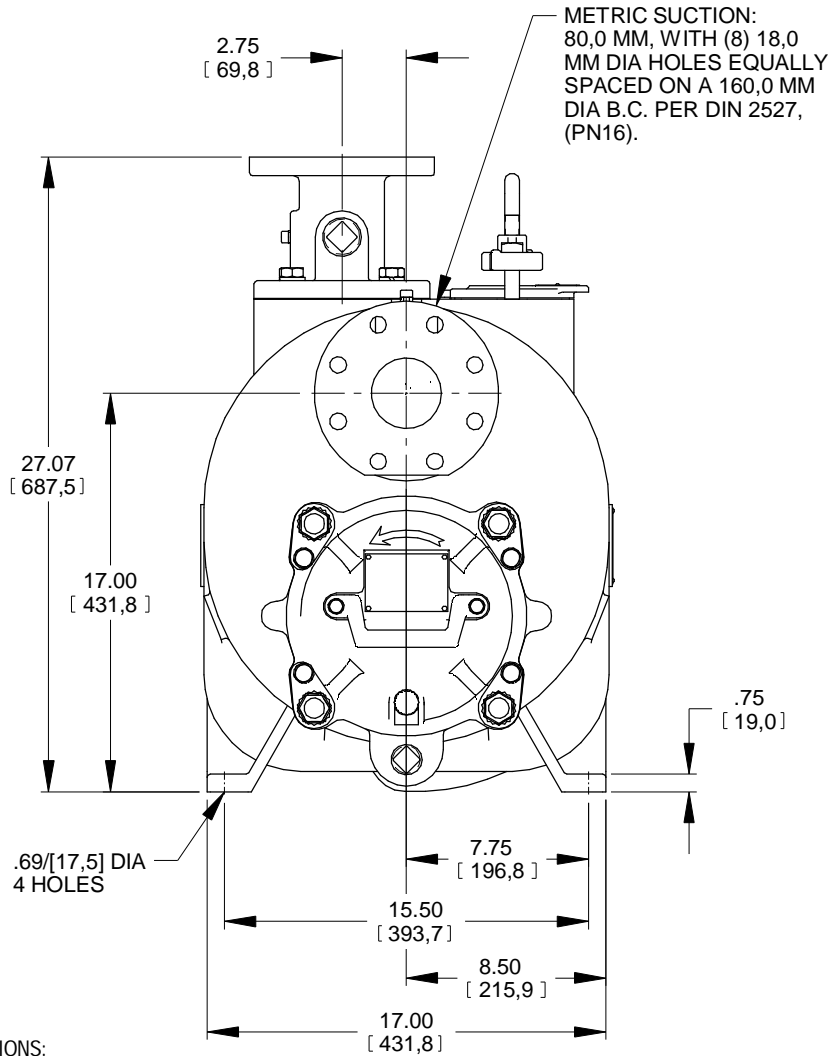
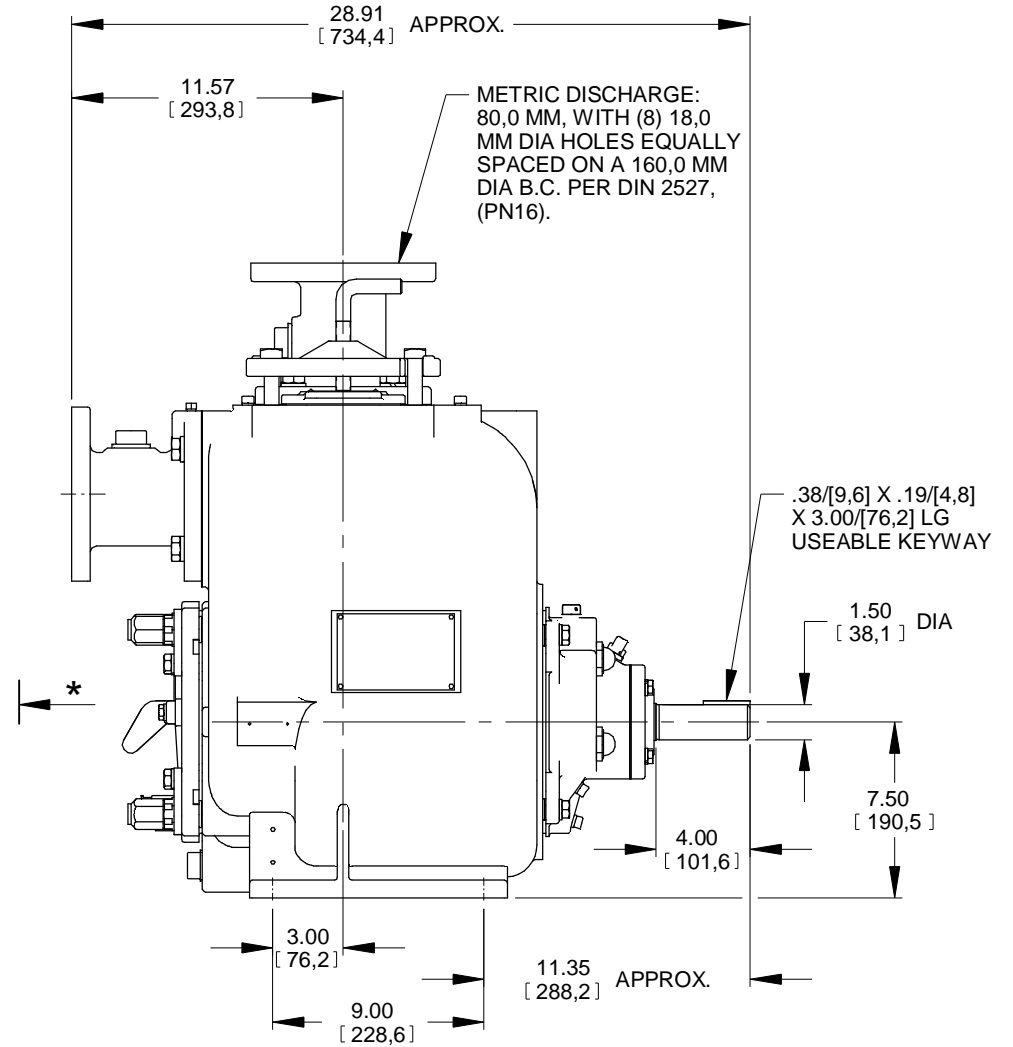


\* 18.00/[457,2] RECOMMENDED FOR  
REMOVAL OF BACK COVER PLATE  
7.50/[190,5] REQUIRED FOR REMOVAL  
OF BACK COVER PLATED.



B 17102 SHEET 1 OF 1



DIMENSIONS:  
INCHES  
[MILLIMETERS]

<b>THE GORMAN-RUPP CO.</b>		DRAWN BY VFR	SCALE 3/16	MODEL T3AS-B /FM
MANSFIELD, OHIO ST. THOMAS, ONTARIO		DATE 12-30-09	REVISED 11-04-14	OUTLINE NUMBER 17102

14-060