

Use With: OM-03989
MR-03991

PUBLICATION NUMBER PL-04077-02
Pump Issue 2
May 24, 1999
Rev. A 09/20/00



PUMP MODEL RS3A31-BAR

**MANUAL
PART 2 of 3**

**PARTS
LIST
WITH
PERFORMANCE CURVE**

THE GORMAN-RUPP COMPANY • MANSFIELD, OHIO

www.grpumps.com

GORMAN-RUPP OF CANADA LIMITED • ST. THOMAS, ONTARIO, CANADA Printed in U.S.A.

© Copyright by the Gorman-Rupp Company

Register your new
Gorman-Rupp pump online at
www.grpumps.com

Valid serial number and e-mail address required.

RECORD YOUR PUMP MODEL AND SERIAL NUMBER

Please record your pump model and serial number in the spaces provided below. Your Gorman-Rupp distributor needs this information when you require parts or service.

Pump Model: _____
Serial Number: _____

PERFORMANCE CURVE – SECTION A

RECORDING MODEL AND SERIAL NUMBERS

Please record the pump model and serial number in the spaces provided below and in the separate Installation/Operation Manual accompanying your pump. Your Gorman-Rupp distributor needs this information when you require parts or service.

Pump Model: _____

Serial Number: _____

WARRANTY INFORMATION

The pump warranty is provided as part of Gorman-Rupp's support program for customers who operate and maintain their equipment as described in this manual and other accompanying literature. Please note that should the equipment be abused or modified to change its performance beyond the original factory specifications, the warranty will become void and any claim will be denied.

PERFORMANCE CURVES

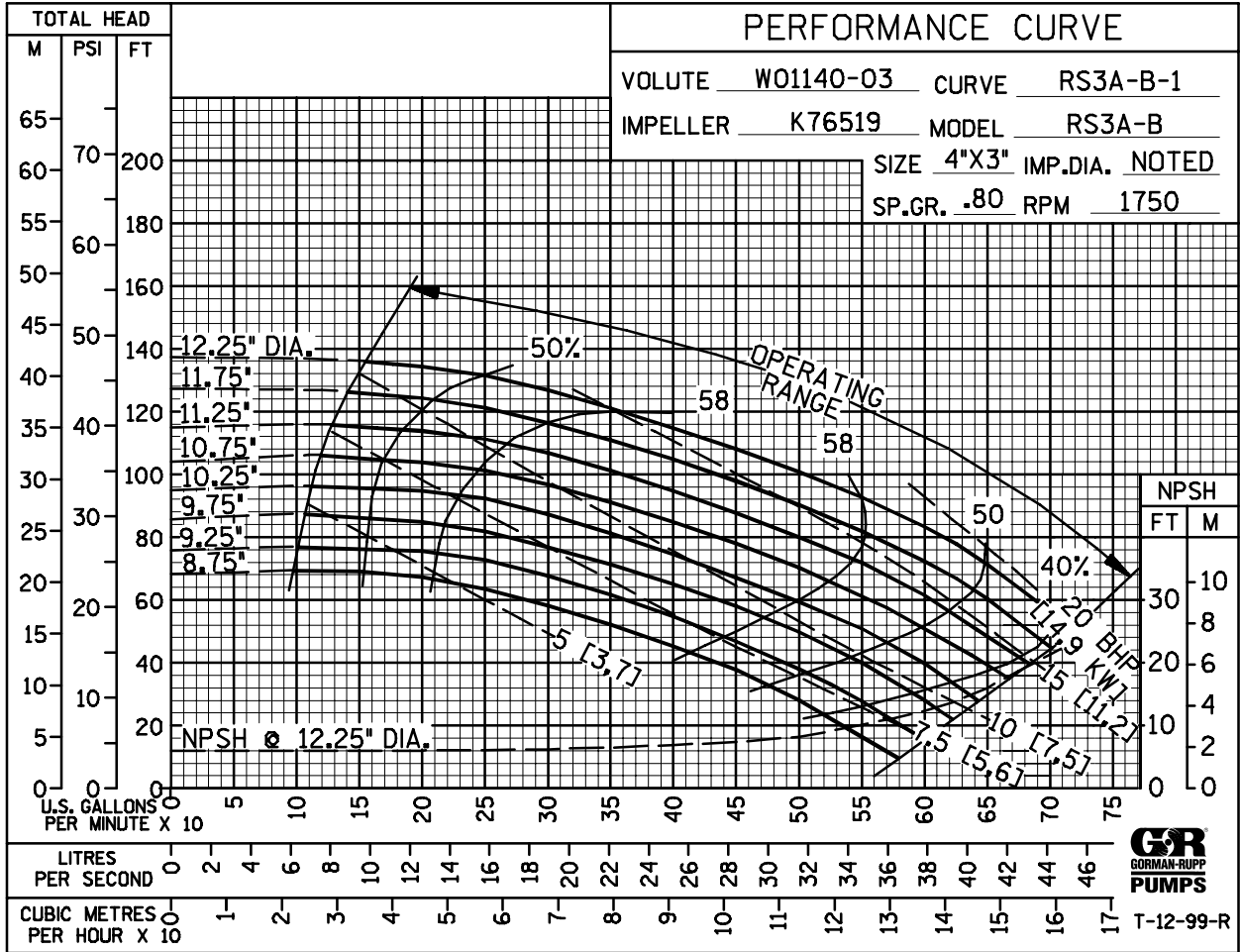
The performance curves on the following page are based on 70° F (21° C) clear water at sea level, corrected to 0.80 specific gravity, with minimum suction lift. Since pump installations are seldom identical, your performance may be different due to such factors as viscosity, specific gravity, elevation, temperature, and impeller trim.

If your pump serial number is followed by an "N", your pump is **NOT** a standard production model. Contact the Gorman-Rupp Company to verify performance or part numbers.

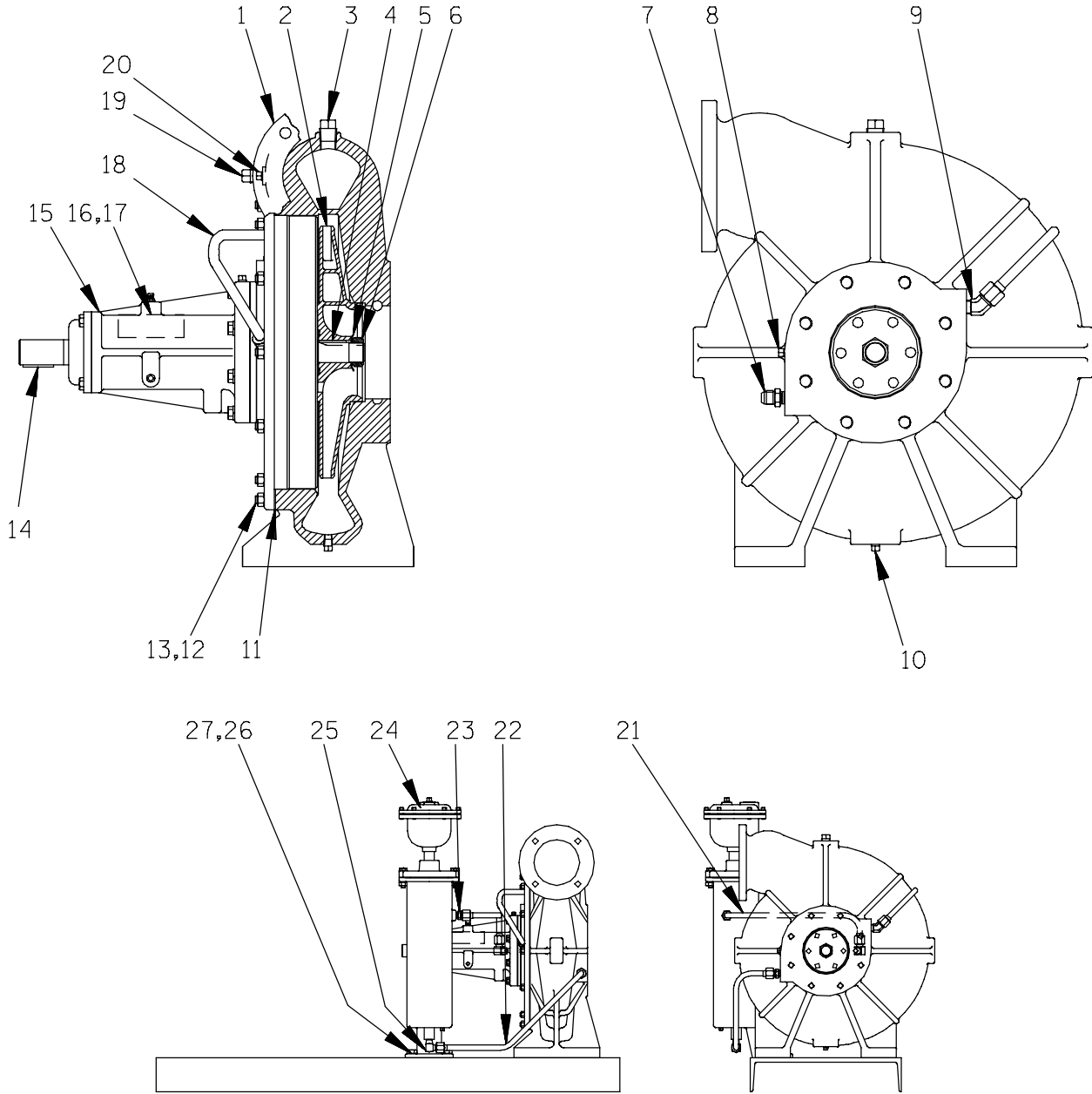


Pump speed and operating condition points must be within the continuous performance range shown on the curve(s).

This Page Intentionally Blank



Performance Curves – Model RS3A31-BAR



RS3A31—BAR

B

S/N 1189289 Up
PUMP ISSUE 2

PARTS LIST Pump Model RS3A31—BAR

If your pump serial number is followed by an "N", your pump is **NOT** a standard production model. Contact the Gorman-Rupp Company to verify part numbers.

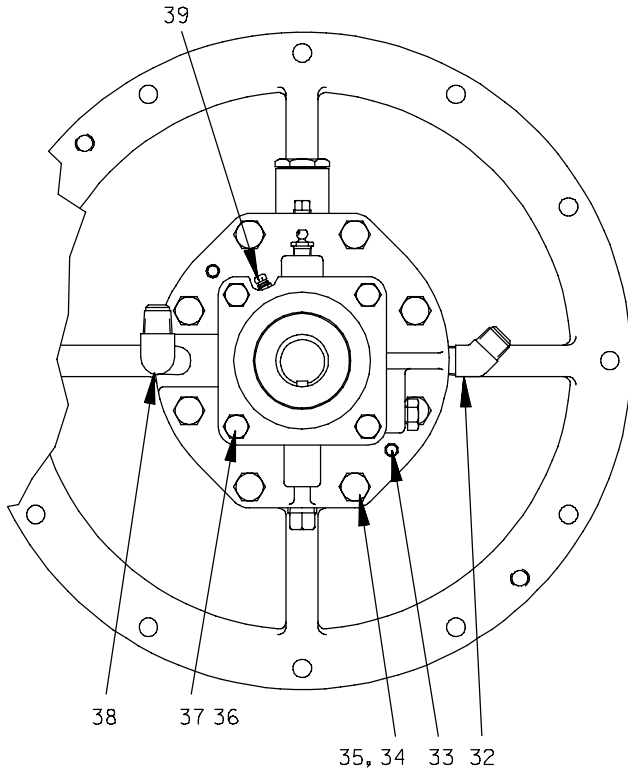
ITEM NO.	PART NAME	PART NUMBER	MAT'L CODE	QTY	ITEM NO.	PART NAME	PART NUMBER	MAT'L CODE	QTY
1	PUMP CASING	W01140-03	11010	1	22	RETURN TUBE ASSY	46335-075	----	1
2 *	IMPELLER	38623-530	13048	1	23	CONNECTOR	25812-214	----	1
3	PIPE PLUG	P08	15079	1	24 ●	AIR RELEASE VALVE	GRP33-06A	----	1
4 *	IMPELLER KEY	K79329-23	15990	1	25	MALE ELBOW	25812-011	----	1
5	BRG LOCKWASHER	23962-506	----	1	26	HEX HD CAPSCREW	B0805	15991	2
6	IMPELLER NUT	K75776	15111	1	27	LOCKWASHER	J08	15991	2
7	CONNECTOR	25812-214	----	1					
8	PIPE PLUG	P02	15079	1		NOT SHOWN:			
9	MALE ELBOW	25812-161	----	1		* SUCT FLANGE GASKET	N14147	18000	1
10	PIPE PLUG	P02	15079	1		* DISCH FLANGE GASKET	11589GA	18000	1
11 *	PUMP CASING GASKET	N14146	20000	1		SUCTION STICKER	6588AG	----	1
12	STUD	C0606	15991	12		ROTATION DECAL	2613M	----	1
13	HEX NUT	D06	15991	12		LUBE DECAL	38816-081	----	1
14 *	SHAFT KEY	N0406	15990	1		INSTRUCTION TAG	38817-011	----	1
15	BRG HOUSING ASSY	44143-041	----	1		DISCHARGE STICKER	6588BJ	----	1
16	NAME PLATE	2613DZ	13990	1		G-R DECAL	GR-03	----	1
17	DRIVE SCREW	BM#04-03	17000	2		BEARING TAG	6588ABB	----	1
18	PRIMING TUBE ASSY	46335-085	----	1					
19	PIPE PLUG	P06	15079	1		OPTIONAL:			
20	PIPE PLUG	P02	15079	1		SUCT/DISCH FLANGES	K33850	----	1
21	DISCHARGE TUBE ASSY	46335-074	----	1		BRONZE IMPELLER	T06235-22	14150	1

* INDICATES PARTS RECOMMENDED FOR STOCK

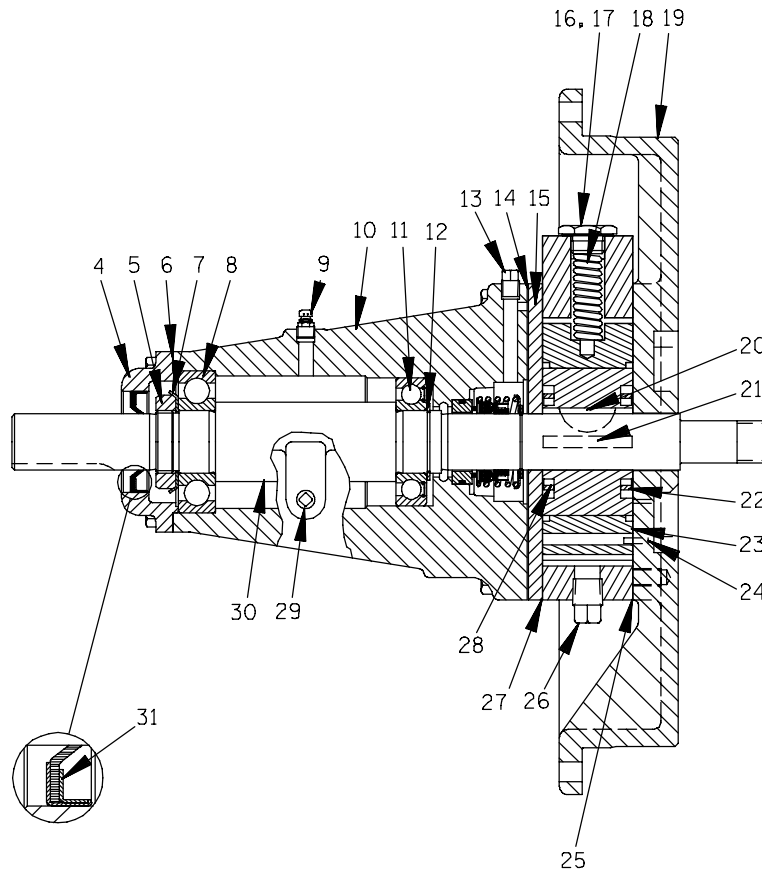
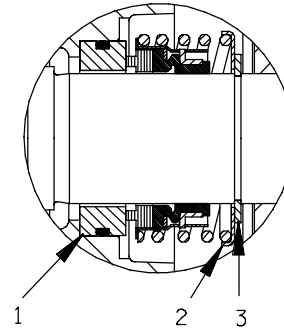
† ALL ROTO-PRIME[™] IMPELLERS ARE TRIMMED.

● SEE ACCOMPANYING LITERATURE FOR INDIVIDUAL PARTS, MAINTENANCE AND REPAIR.

THE GORMAN-RUPP COMPANY • MANSFIELD, OHIO



SEAL AREA DETAIL



**S/N 1189289 Up
PUMP ISSUE 2**

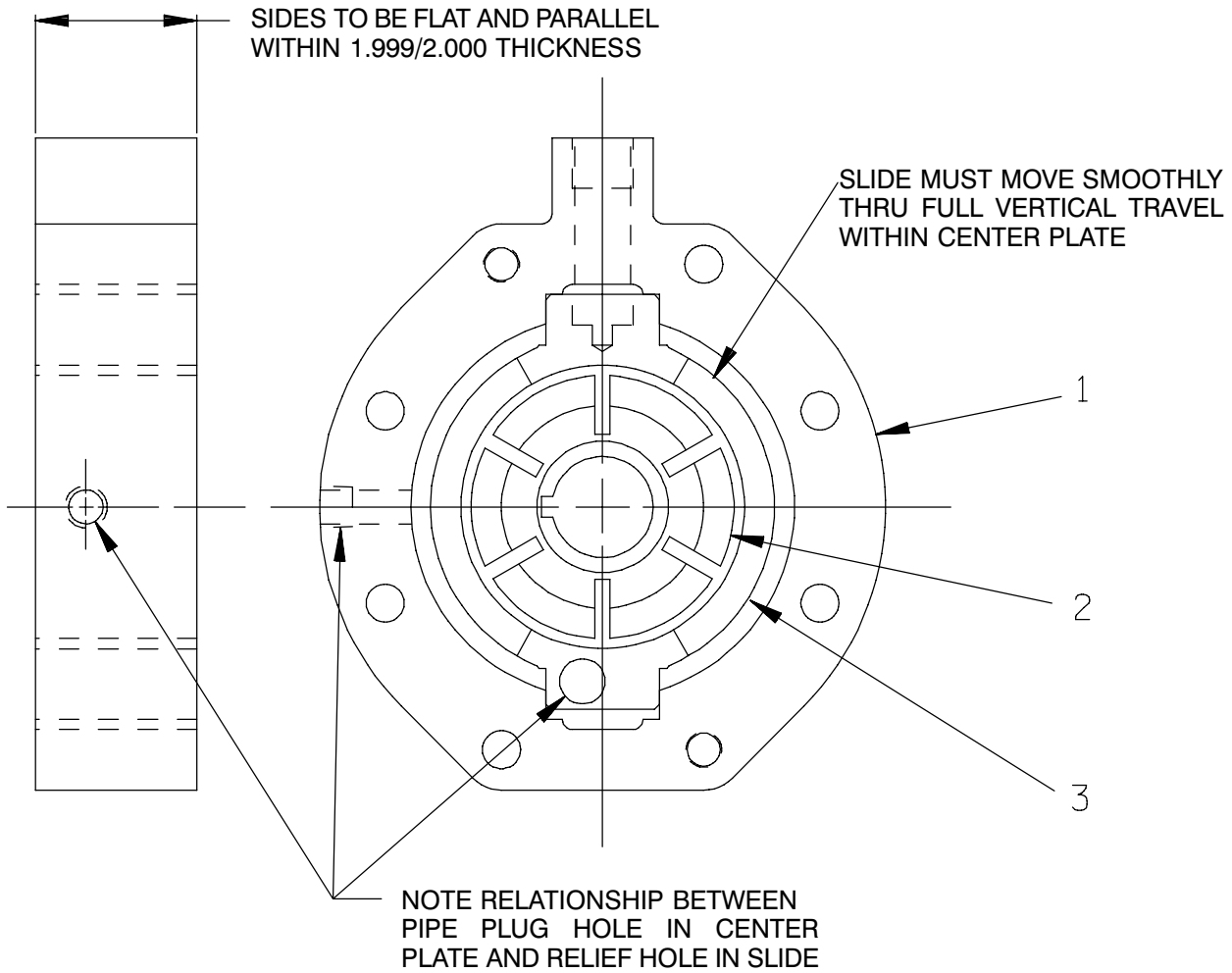
**PARTS LIST
44143—041 Bearing Housing Assembly**

ITEM NO.	PART NAME	PART NUMBER	MAT'L CODE	QTY	ITEM NO.	PART NAME	PART NUMBER	MAT'L CODE	QTY
1 *	SEAL ASSEMBLY	25271—192	----	1	26	PIPE PLUG	P06	15079	1
2	SPRING HOLDER	25273—266	----	1	27 *	CENTER PLATE GASKET	N14145	18010	1
3	SEAL SNAP RING	S700	----	1	28	ROTOR BLADE SPACER	K74031	15030	1
4	BEARING CAP	N14130	10010	1	29	PIPE PLUG	P02	15079	1
5	BEARING LOCK NUT	S301	----	1	30 *	IMPELLER SHAFT	R10123	15010	1
6 *	BEARING CAP GASKET	K74033	18000	1	31 *	OIL SEAL	25227—230	----	1
7	TAB WASHER	S302	----	1	32	MALE ELBOW	25812—161	----	1
8 *	OUTBOARD BEARING	23282—008	----	1	33	DOWEL PIN	21133—076	----	2
9	AIR VENT	S2162	----	1	34	HEX HD CAPSCREW	B0615	15991	8
10	BEARING HOUSING	T02990	11010	1	35	LOCKWASHER	J06	15991	8
11 *	BALL BEARING	23257—012	----	1	36	HEX HD CAPSCREW	B0504	15991	4
12	BEARING RET RING	S248	----	1	37	LOCKWASHER	J05	15991	4
13	PIPE PLUG	P02	15079	1	38	MALE ELBOW	25812—011	----	1
14 *	SPACER PLATE GASKET	N14144	18000	1	39	AIR VENT	S2162	----	1
15	SPACER PLATE	N14129	11010	1		OPTIONAL:			
16	PRESS REG SPRING CAP	K68064	15991	1		SST IMPELLER SHAFT	R10769	17080	1
17 *	SPRING CAP GASKET	K86067	----	1		TEFLON SEAL ASSY	25271—743	----	1
18 *	PRESS REG SPRING	K74119	----	1		● OIL LUBE BEARING	44143—103	----	1
19	BODY COVER	T02985B—01	11010	1		HOUSING ASSEMBLY			
20 *	ROTOR WOODRUFF KEY	K74041	15990	1		--INBOARD BEARING	S310	----	1
21 *	ROTOR BLADE	K79300—21	----	6		--OUTBOARD BEARING	23275—008	----	1
22	ROTOR BLADE SPACER	K74031	15030	1		--OIL CUP	26713—051	----	1
23	GROUP GRIND	42212—012	----	1		GROUP GRIND WITH	LK05267	----	1
24 *	LOCATING PIN	21154—666	----	1		C.I. ROTOR			
25 †	CENTER PLATE GASKET	N14145	18010	2					

* INDICATES PARTS RECOMMENDED FOR STOCK

† 2 GASKETS REQUIRED WHEN ROTOR OR SLIDE IS THICKER THAN CENTER PLATE.

● ALL OTHER COMPONENTS SAME AS STANDARD BEARING HOUSING ASSEMBLY.



PARTS LIST
42212-012 Group Grind

ITEM NO.	PART NAME	PART NUMBER	MAT'L CODE	QTY
1	CENTER PLATE	NOT AVAILABLE	---	1
2	ROTOR	NOT AVAILABLE	---	1
3	SLIDE	NOT AVAILABLE	---	1

NOTE: THE GROUP GRIND MUST BE REPLACED AS A COMPLETE UNIT: INDIVIDUAL PIECE PARTS ARE NOT SOLD SEPARATELY.

THE GORMAN-RUPP COMPANY • MANSFIELD, OHIO

GORMAN-RUPP OF CANADA LIMITED • ST. THOMAS, ONTARIO, CANADA

Printed in U.S.A.

**For U.S. and International Warranty Information,
Please Visit www.grpumps.com/warranty
or call:
U.S.: 419-755-1280
International: +1-419-755-1352**

**For Canadian Warranty Information,
Please Visit www.grcanada.com/warranty
or call:
519-631-2870**