



**PUMP MODELS**  
**S4K1-E15 460/3**  
**S4K1-E15 575/3**

**MANUAL**  
**PART 2 of 3**

**PARTS**  
**LIST**  
**WITH**  
**PERFORMANCE CURVE**

**THE GORMAN-RUPP COMPANY • MANSFIELD, OHIO**

GORMAN-RUPP OF CANADA LIMITED • ST. THOMAS, ONTARIO, CANADA Printed in U.S.A.

©Copyright by the Gorman-Rupp Company

## PERFORMANCE CURVE – SECTION A

### RECORDING MODEL AND SERIAL NUMBERS

Please record the pump model and serial number in the spaces provided below and in the separate Installation/Operation Manual accompanying your pump. Your Gorman-Rupp distributor needs this information when you require parts or service.

Pump Model: \_\_\_\_\_

Serial Number: \_\_\_\_\_

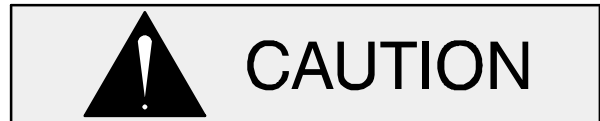
### WARRANTY INFORMATION

The pump warranty is provided as part of Gorman-Rupp's support program for customers who operate and maintain their equipment as described in this manual and other accompanying literature. Please note that should the equipment be abused or modified to change its performance beyond the original factory specifications, the warranty will become void and any claim will be denied.

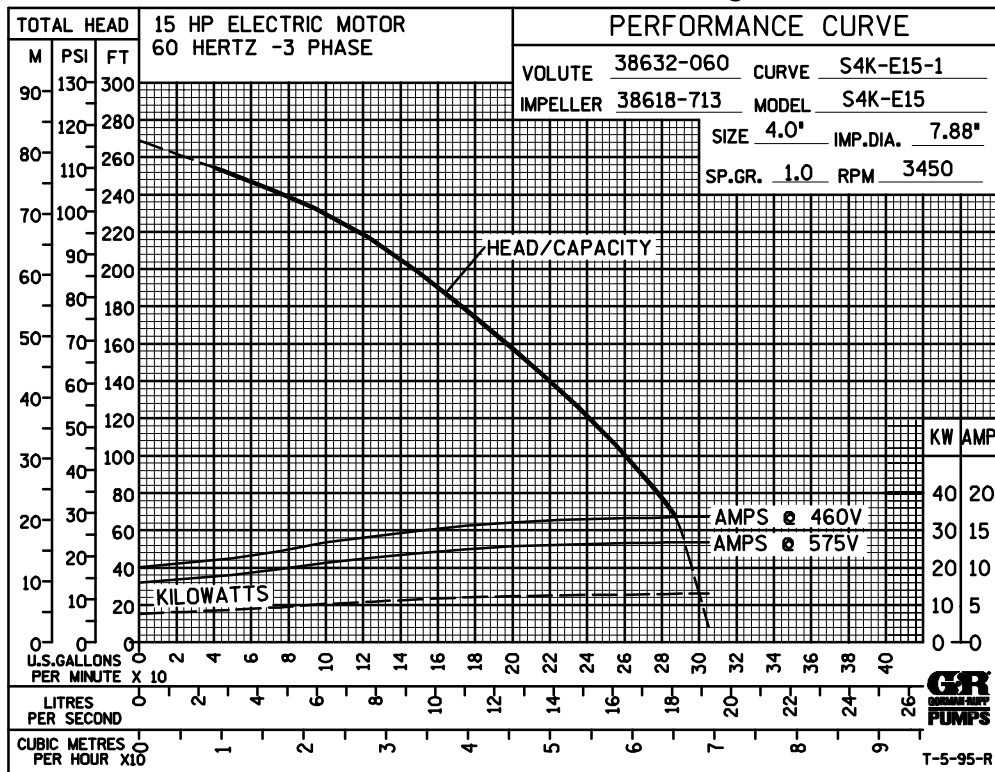
### PERFORMANCE CURVES

The performance curve below is based on 70° F (21° C) clear water at sea level. Since pump installations are seldom identical, your performance may be different due to such factors as viscosity, specific gravity, elevation, temperature, and impeller trim.

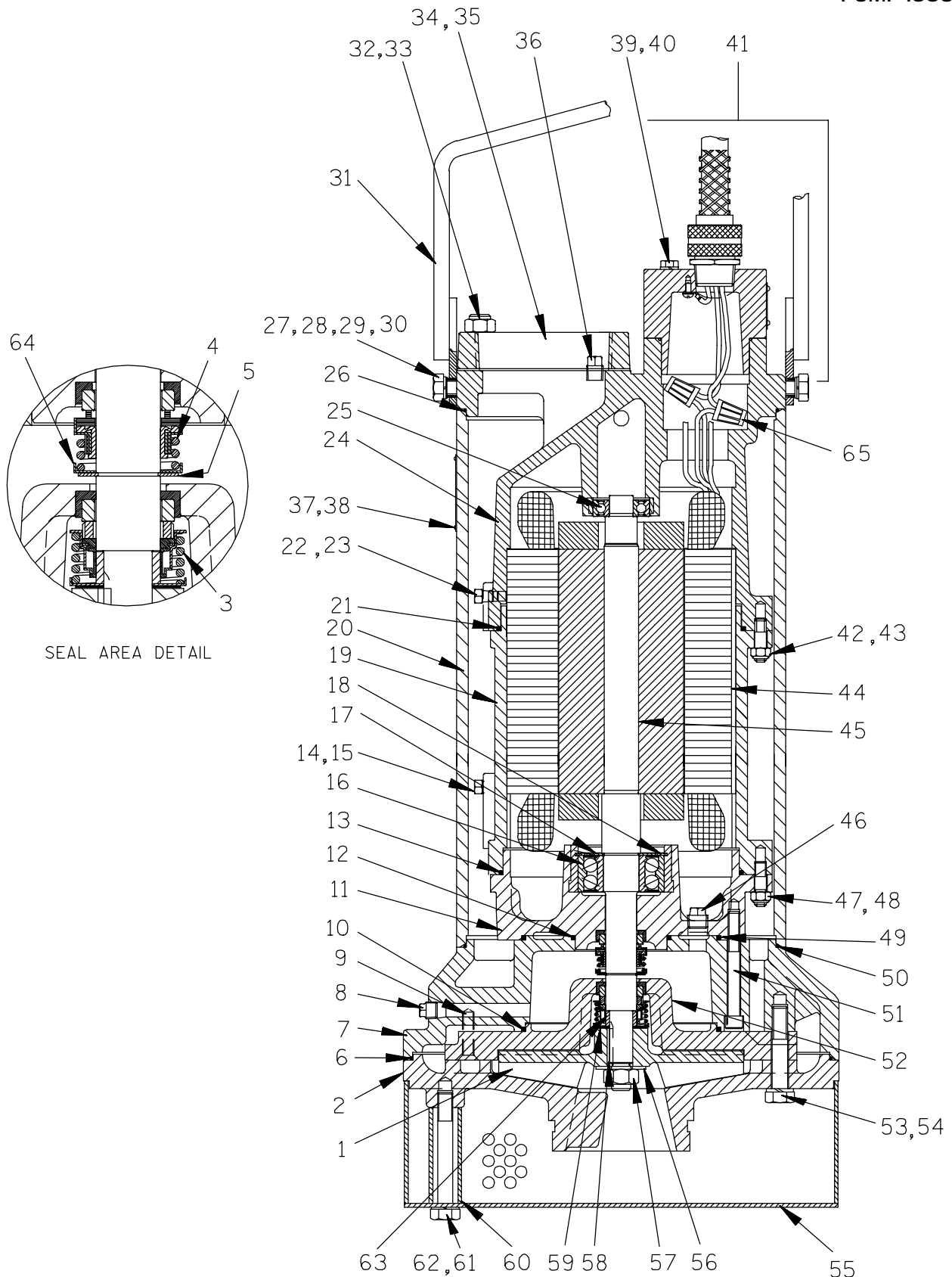
If your pump serial number is followed by an "N", your pump is **NOT** a standard production model. Contact the Gorman-Rupp Company to verify performance or part numbers.



Pump speed and operating condition points must be within the continuous performance range shown on the curve(s).



Performance Curve – Model S4K1-E15 460/575/3



**THE GORMAN-RUPP COMPANY • MANSFIELD, OHIO**

GORMAN-RUPP OF CANADA LIMITED • ST. THOMAS, ONTARIO, CANADA

Printed in U.S.A.

JULY 17, 1995  
REV. D 03/28/01

©Copyright by the Gorman-Rupp Company

1 of 4  
Page 150.4 K1

S/N 1073537 Up  
PUMP ISSUE 1

If your pump serial number is followed by an "N", your pump is **NOT** a standard production model. Contact the Gorman-Rupp Company to verify part numbers.

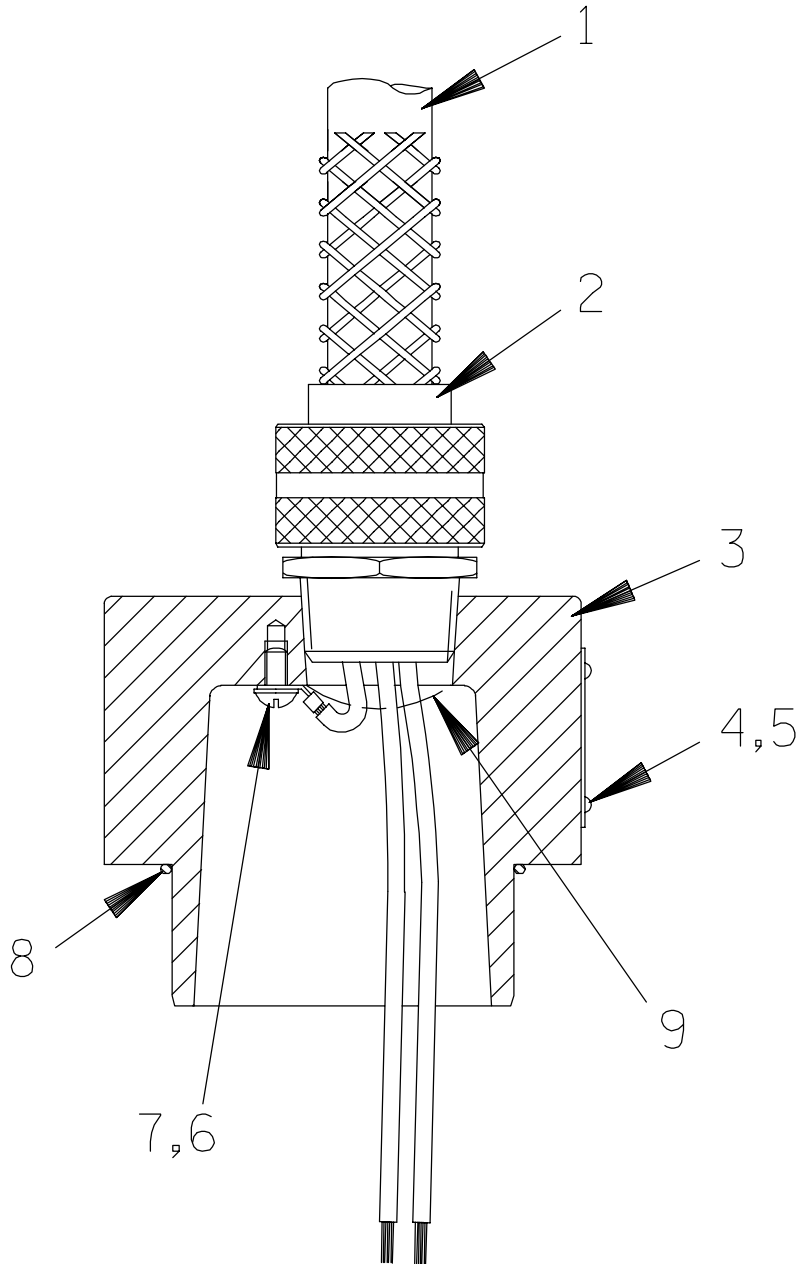
ITEM NO.	PART NAME	PART NUMBER	MAT'L CODE	QTY	ITEM NO.	PART NAME	PART NUMBER	MAT'L CODE	QTY
1 *	IMPELLER	38618-713	1102H	1	42	STUD	C0606	17000	8
2	DIFFUSER	38632-060	1102H	1	43	DEFORM LOCKNUT	DD06	17000	8
3 *	LWR SEAL ASSY	46512-057	---	1	44	460V STATOR ASSY	47113-060	---	1
4 *	UPR SEAL ASSY	25271-866	---	1		575V STATOR ASSY	47113-061	---	1
5	RETAINING RING	S362	---	1	45	ROTOR/SHAFT ASSY	47112-060	---	1
6 *	DIFFUSER O-RING	25152-279	---	1	46	PIPE PLUG	P06	15079	1
7	INTERMEDIATE	38261-029	13000	1	47	STUD	C0606	17000	8
8	PIPE PLUG	P04	17000	1	48	DEFORM LOCKNUT	DD06	17000	8
9	FLAT HD MACH SCRW	Y0405	17000	3	49 *	MTR HSG O-RING	25152-259	---	1
10 *	SEAL PLATE O-RING	25152-259	---	1	50 *	CASING O-RING	S1830	---	1
11	LWR MOTOR HSG	38311-055	13000	1	51	SOCK HD CAPSCREW	DM0613	17000	6
12 *	MOTOR HSG O-RING	25152-234	---	1	52 *	SEAL PLATE	38272-353	1102H	1
13 *	MOTOR HSG O-RING	25152-265	---	1	53	HEX HD CAPSCREW	B0811	17000	6
14	PIPE PLUG	DOES NOT APPLY			54	LOCKWASHER	J08	17000	6
15	ALLEN HD CAPSCREW	DOES NOT APPLY			55	STRAINER ASSY	46611-012	2415V	1
16 *	LWR BALL BEARING	23425-457	---	1	56	FLAT WASHER	KB10	17000	1
17	INNER RET RING	S1831	---	1	57	HEX NUT	22561-147	---	1
18	OUTER RET RING	24121-552	---	1	58	IMPELLER KEY	N0304-1/2	17000	1
19	MIDDLE MOTOR HSG	38311-056	13000	1	59 *	IMPELLER SHIM SET	2Y	17090	1
20	PUMP CASING	38311-814	13005	1	60	SUPPORT PIPE	31412-064	15070	3
21 *	MID MTR HSG O-RING	25152-265	---	1	61	HEX HD CAPSCREW	B0815	15991	3
22	PIPE PLUG	38649-022	17030	2	62	LOCKWASHER	J08	15991	3
23	ALLEN HD SETSCREW	GA0501-1/4	15990	2	63 *	IMPELLER SLEEVE	13878	17020	1
24	UPPER MTR HSG	38311-054	13000	1	64	SPRING HOLDER	25273-260	---	1
25 *	UPR BALL BEARING	23257-009	---	1	65	CONNECTOR	S1718	---	5
26 *	CASING O-RING	S1830	---	1	NOT SHOWN:				
27	BUSHING	9562	15991	2		IMPELLER PULLER	48711-018	---	1
28	HEX HD CAPSCREW	B0804	15991	2		VOLTAGE TAG:			
29	LOCKWASHER	J08	15991	2		- 460V	6588BL	---	1
30	FLAT WASHER	KE08	15991	2		- 575V	6588BM	---	1
31	HOIST BAIL	11959	2400V	1		STD CONTROL BOX:			
32	STUD	C0609	15991	4		- 460V	27515-524	---	1
33	HEX NUT	D06	15991	4		- 575V	27515-534	---	1
34	DISCHARGE FLANGE	11957	13040	1		HEATER PACK:			
35 *	FLANGE GASKET	11957G	20000	1		- 460V	27521-205	---	1
36	PIPE PLUG	P04	17000	1		- 575V	27521-204	---	1
37	NAME PLATE				OPTIONAL:				
	- 460/3	2613GH	17020	1	* REPAIR GASKET SET	11000AH	---		1
	- 575/3	38814-055	17000	1	LIQUID LEVEL DEVICES:				
38	DRIVE SCREW					DIAPHRAGM TYPE	GRP48-03 or GRP48-061		
	- 460/3	BM#04-03	17000	2		FLOAT TYPE			
	- 575/3	BM#04-03	17000	4		- 460/3	27471-155	---	1
39	HEX HD CAPSCREW	B0511	15991	4		- 575/3	27471-180	---	1
40	LOCKWASHER	J05	15991	4		120V LIQ LVL CONTROL	27521-321	---	1
41	TERMINAL HOUSING & CABLE ASSY	47367-084	---	1					

\* INDICATES PARTS RECOMMENDED FOR STOCK

**THE GORMAN-RUPP COMPANY • MANSFIELD, OHIO**

GORMAN-RUPP OF CANADA LIMITED • ST. THOMAS, ONTARIO, CANADA

Printed in U.S.A.



**THE GORMAN-RUPP COMPANY • MANSFIELD, OHIO**

GORMAN-RUPP OF CANADA LIMITED • ST. THOMAS, ONTARIO, CANADA

Printed in U.S.A.

JULY 17, 1995  
REV. D 03/28/01

©Copyright by the Gorman-Rupp Company

3 of 4  
Page 150.4 K1

S/N 1073537 Up  
PUMP ISSUE 1

### Terminal Housing

If your pump serial number is followed by an "N", your pump is **NOT** a standard production model. Contact the Gorman-Rupp Company to verify part numbers.

ITEM NO.		PART NAME	PART NUMBER	MAT'L CODE	QTY
1	*	CABLE – 50 FT	47351–011	---	1
2	*	CABLE GRIP	27111–016	---	1
3		TERMINAL HOUSING	38381–238	13000	1
4		INFORMATION PLATE	38816–145	17050	1
5		DRIVE SCREW	BM#04–03	17000	4
6		T TYPE LOCKWASHER	AK#10	15991	2
7		RD HD MACHINE SCREW	X#10–01 1/2	14990	2
8		O-RING	25152–149	---	1
9		1 OZ RTV SEALANT	18771–106	---	1

\* INDICATES PARTS RECOMMENDED FOR STOCK

**THE GORMAN-RUPP COMPANY • MANSFIELD, OHIO**

GORMAN-RUPP OF CANADA LIMITED • ST. THOMAS, ONTARIO, CANADA Printed in U.S.A.

**For U.S. and International Warranty Information,  
Please Visit [www.grpumps.com/warranty](http://www.grpumps.com/warranty)  
or call:  
U.S.: 419-755-1280  
International: +1-419-755-1352**

**For Canadian Warranty Information,  
Please Visit [www.grcanada.com/warranty](http://www.grcanada.com/warranty)  
or call:  
519-631-2870**