



***PRIME-AIRE*TM SERIES**
PUMP MODEL
PA12A60-B

**MANUAL
PART 2 of 3**

**PARTS
LIST**
**WITH
PERFORMANCE CURVE**

THE GORMAN-RUPP COMPANY • MANSFIELD, OHIO

GORMAN-RUPP OF CANADA LIMITED • ST. THOMAS, ONTARIO, CANADA Printed in U.S.A.



The engine exhaust from this product contains chemicals known to the State of California to cause cancer, birth defects or other reproductive harm.

PERFORMANCE CURVE – SECTION A

RECORDING MODEL AND SERIAL NUMBERS

Please record the pump model and serial number in the spaces provided below and in the separate Installation/Operation Manual accompanying your pump. Your Gorman-Rupp distributor needs this information when you require parts or service.

Pump Model: _____

Serial Number: _____

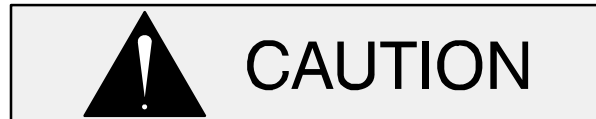
WARRANTY INFORMATION

The pump warranty is provided as part of Gorman-Rupp's support program for customers who operate and maintain their equipment as described in this manual and other accompanying literature. Please note that should the equipment be abused or modified to change its performance beyond the original factory specifications, the warranty will become void and any claim will be denied.

PERFORMANCE CURVE

The performance curve on the following page is based on 70° F (21° C) clear water at sea level with minimum suction lift. Since pump installations are seldom identical, your performance may be different due to such factors as viscosity, specific gravity, elevation, temperature, and impeller trim.

If your pump serial number is followed by an "N", your pump is **NOT** a standard production model. Contact the Gorman-Rupp Company to verify performance or part numbers.

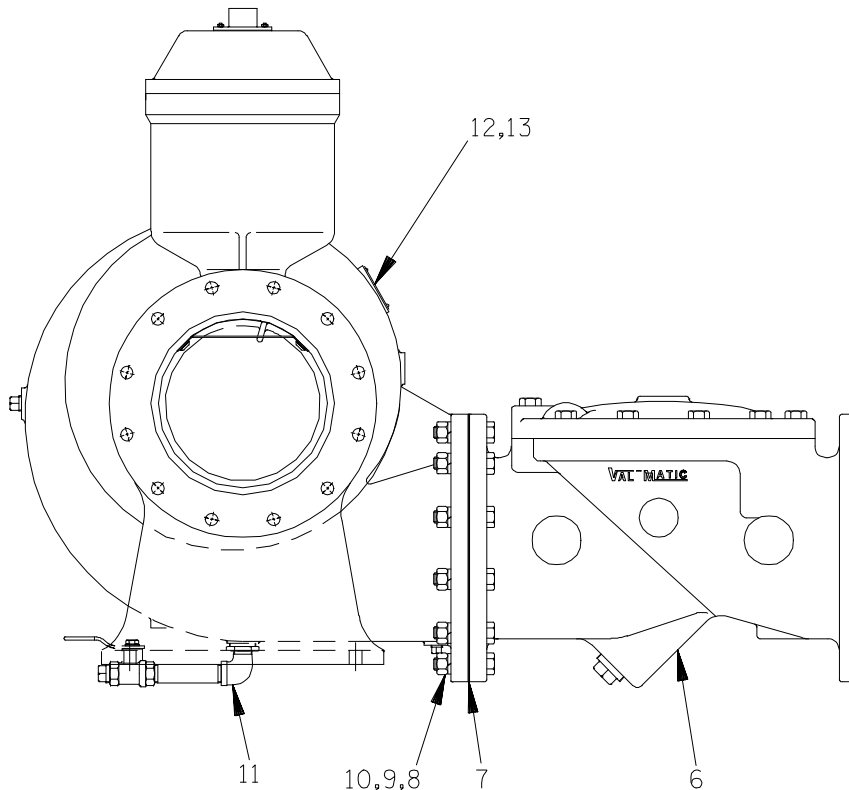
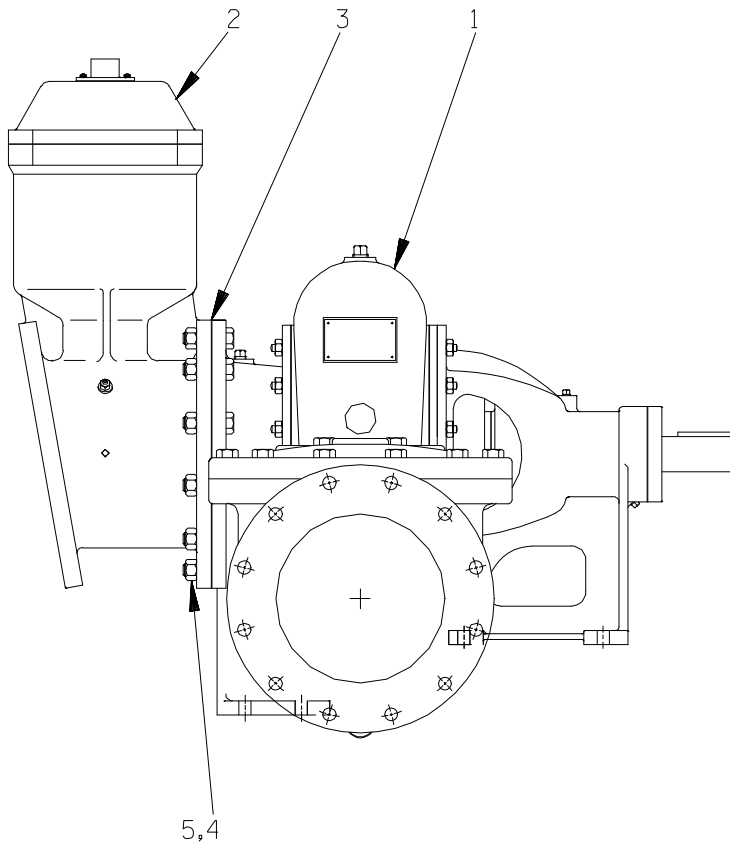


Pump speed and operating condition points must be within the continuous performance range shown on the curve.

CURVE UNAVAILABLE AT PRINTING

Performance Curve – Model PA12A60-B

This Page Intentionally Blank



THE GORMAN-RUPP COMPANY • MANSFIELD, OHIO

GORMAN-RUPP OF CANADA LIMITED • ST. THOMAS, ONTARIO, CANADA

Printed in U.S.A.

S/N 1192301 Up
PUMP ISSUE 2

PARTS LIST
Pump Model PA12A60—B

If your pump serial number is followed by an "N", your pump is **NOT** a standard production model. Contact the Gorman-Rupp Company to verify part numbers.

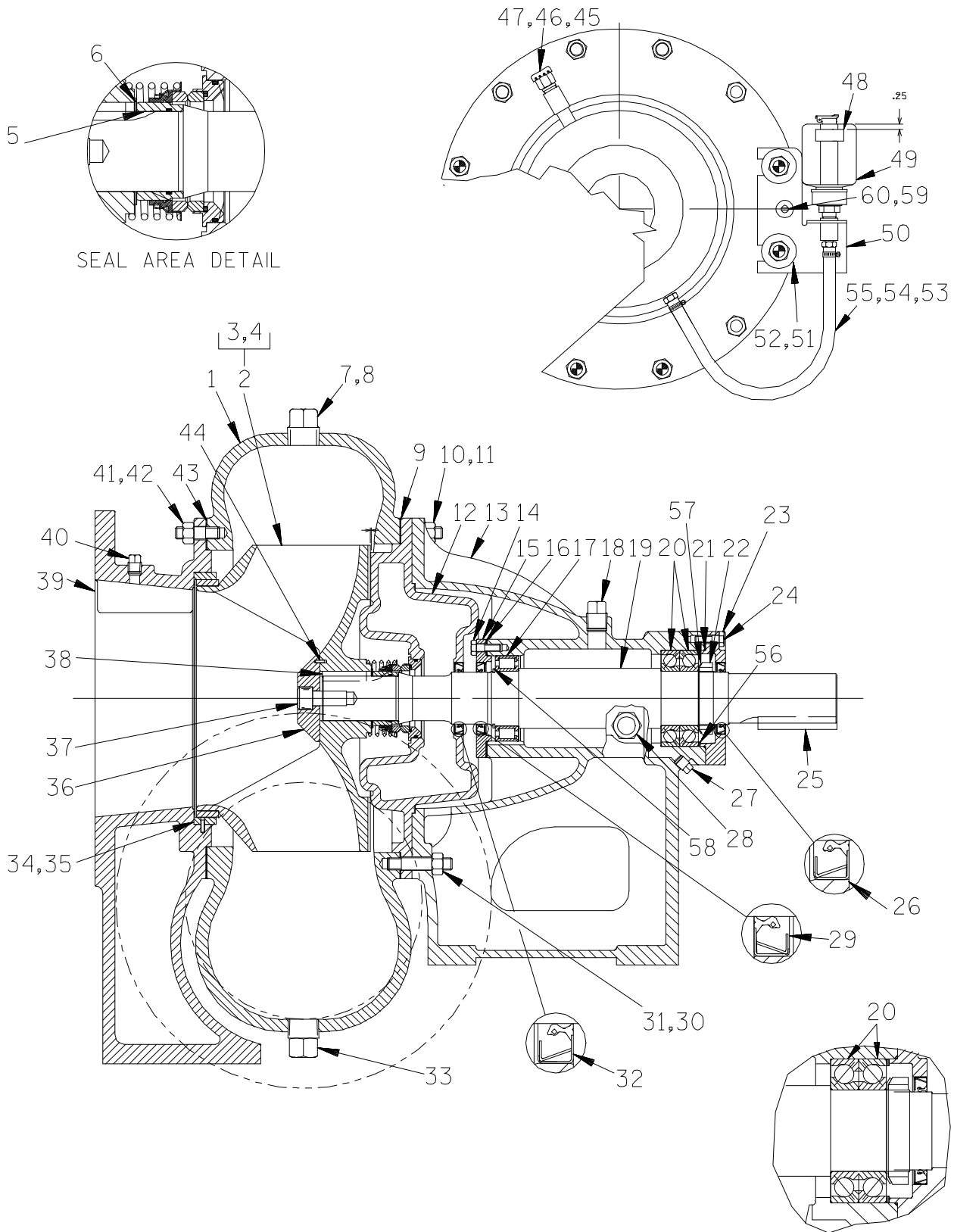
ITEM NO.	PART NAME	PART NUMBER	MAT'L CODE	QTY
1	PUMP SUB-ASSEMBLY	612M60—B	---	1
2	PRIMING CHAMBER ASSY	46112—701	---	1
3	FLANGE GASKET	4991G	18000	1
4	HEX HD CAPSCREW	B1412	15991	12
5	HEX NUT	D14	15991	12
6	CHECK VALVE ASSY	26642—128	---	1
	—FLAPPER	26688—003	---	1
	—COVER GASKET	26688—004	---	1
7	FLANGE GASKET	4991G	18000	1
8	HEX HD CAPSCREW	B1416	15991	12
9	LOCKWASHER	J14	15991	12
10	HEX NUT	D14	15991	12
11	DRAIN VALVE ASSY	46343—262	---	1
12	NAME PLATE	38818—127	13000	1
13	DRIVE SCREW	BM#04—03	17000	4
14	HEX HD CAPSCREW	B0604	15991	1

* INDICATES PARTS RECOMMENDED FOR STOCK

THE GORMAN-RUPP COMPANY • MANSFIELD, OHIO

GORMAN-RUPP OF CANADA LIMITED • ST. THOMAS, ONTARIO, CANADA

Printed in U.S.A.



THE GORMAN-RUPP COMPANY • MANSFIELD, OHIO

GORMAN-RUPP OF CANADA LIMITED • ST. THOMAS, ONTARIO, CANADA

Printed in U.S.A.

June 04, 1999
Rev. A 07/12/01

©Copyright by the Gorman-Rupp Company

3 of 6
Page 64.12 A1

S/N 1192301 Up
PUMP ISSUE 2

PARTS LIST
Pump Sub-Assembly

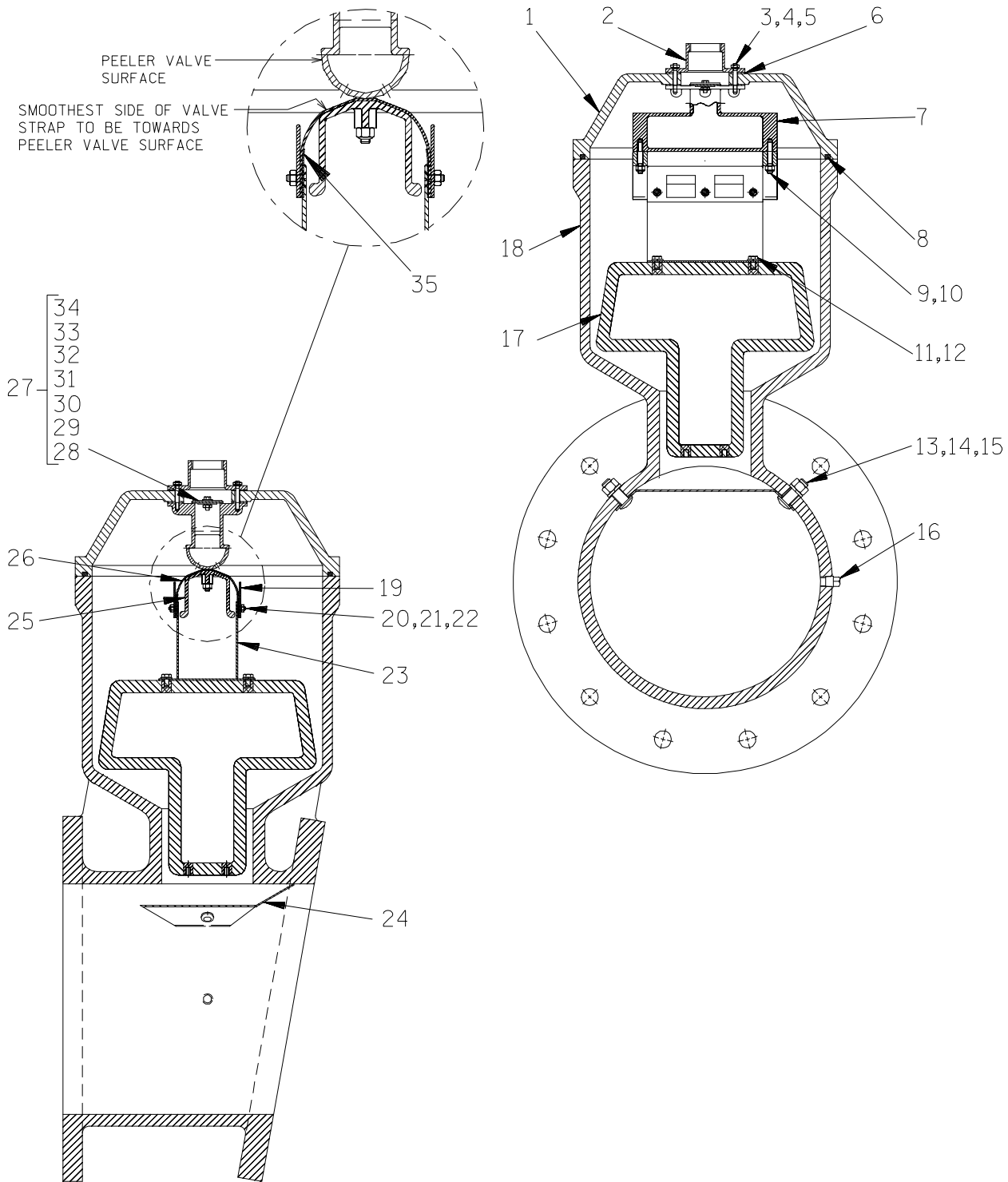
ITEM NO.	PART NAME	PART NUMBER	MAT'L CODE	QTY	ITEM NO.	PART NAME	PART NUMBER	MAT'L CODE	QTY
1	VOLUTE CASING	38219-305	10010	1	36 *	IMP WASHER	31167-022	15030	1
2 *	IMP & WEAR RING ASSY	46151-022	24110	1	37	SOC HD CAPSCREW	BD1206	15990	1
3	-IMPELLER	38621-729	11010	1	38 *	IMPELLER KEY	N0809	15990	1
4	-WEAR RING	4182A	11030	1	39	SUCTION HEAD	4180	10010	1
5 *	MECHANICAL SEAL	46512-109	---	1	40	PIPE PLUG	P06	15079	1
6 *	SHIM SET	48261-033	---	REF	41	STUD	C1009	15991	12
7	PIPE PLUG	P12	15079	2	42	HEX NUT	D10	15991	12
8	PIPE PLUG	P06	15079	1	43 *	SUCTION HEAD GASKET	4180G	18000	1
9 *	VOLUTE CASING GSKT	38674-434	18000	1	44	ROLL PIN	S2197	---	1
10	STUD	C1011	15991	10	45	AIR VENT	S1703	---	1
11	HEX NUT	D10	15991	10	46	PIPE NIPPLE	T0608	15079	1
12	SEAL PLATE	38272-713	10010	1	47	PIPE COUPLING	AE06	15079	1
13	PEDESTAL	38257-520	10000	1	48	OIL LEVEL DECAL	38816-123	---	1
14	HEX HD CAPSCREW	B0605	15991	6	49	BOTTLE OILER	26713-004	---	1
15	INBOARD BEARING CAP	38322-425	10010	1	50	OILER BRACKET ASSY	41881-618	24150	1
16 *	BEARING CAP GASKET	4184G	18000	1	51	FLAT WASHER	K10	15991	2
17 *	ROLLER BEARING	23528-005	---	1	52	LOCK WASHER	J10	15991	2
18	VENTED PIPE PLUG	38649-009	15079	1	53	MALE CONNECTOR	26523-409	---	2
19 *	IMPELLER SHAFT	38512-522	17040	1	54	HOSE 3/8 X 11' LG	18513-054	---	1
20 *	OUTBRD BALL BEARING	23413-015	---	2	55	HOSE CLAMP	26518-642	---	2
21 *	BRG CAP O-RING	25152-249	---	1	56	BRG ADJ SHIM SET	48261-055	---	1
22	BEARING LOCKNUT	23962-015	---	1	57	LOCKING TAB WASHER	23962-515	---	1
23	BEARING CAP	38322-429	10000	1	58	RETAINING RING	24124-057	---	1
24	HEX HD CAPSCREW	B0605	15991	6	59	RD HD MACH SCREW	X0405	15991	2
25 *	SHAFT KEY	N1016	15990	1	60	LOCKWASHER	J04	15991	2
26 *	BRG CAP OIL SEAL	25258-845	---	1	NOT SHOWN:				
27	PEDESTAL DRAIN PLUG	P04	15079	1		STRAINER	46641-012	24150	1
28	SIGHT GAUGE	S1471	---	2		INSTRUC PAPER TAG	38817-024	---	1
29 *	BRG CAP OIL SEAL	25258-845	---	1		SUCTION DECAL	6588AG	---	1
30	STUD	C1013	15991	2		DISCHARGE DECAL	6588BJ	---	1
31	HEX NUT	D10	15991	2		LUBRICATION DECAL	38816-079	---	2
32 *	SEAL PLATE OIL SEAL	25258-845	---	1		ROTATION DECAL	2613M	---	1
33	PIPE PLUG	P24	10009	1		INSTRUC PAPER TAG	38817-011	---	1
34 *	SUCT HEAD WEAR RING	4181A	10000	1		NAME PLATE	38818-127	13990	1
35	SPIRAL PIN	21137-123	---	3		DRIVE SCREW	BM#04-03	17000	4

* INDICATES PARTS RECOMMENDED FOR STOCK

THE GORMAN-RUPP COMPANY • MANSFIELD, OHIO

GORMAN-RUPP OF CANADA LIMITED • ST. THOMAS, ONTARIO, CANADA

Printed in U.S.A.



THE GORMAN-RUPP COMPANY • MANSFIELD, OHIO

GORMAN-RUPP OF CANADA LIMITED • ST. THOMAS, ONTARIO, CANADA

Printed in U.S.A.

June 04, 1999
Rev. A 07/12/01

©Copyright by the Gorman-Rupp Company

5 of 6
Page 64.12 A1

S/N 1192301 Up
PUMP ISSUE 2

PARTS LIST
46112—702 Peeler Type Priming Valve

ITEM NO.	PART NAME	PART NUMBER	MAT'L CODE	QTY	ITEM NO.	PART NAME	PART NUMBER	MAT'L CODE	QTY
1	PRIMING CHAMBER LID	38346—613	13000	1	21	LOCKWASHER	J#10	17000	6
2	PEELER VALVE NECK	38349—405	14000	1	22	HEX NUT	D#10	17000	6
3	LOCKWASHER	J#10	17000	4	23	VLV STRAP BRKT ASSY	41881—523	2415X	1
4	HEX NUT	D#10	17000	4	24	INDUCTOR GUARD	34872—010	17000	1
5	STUD	21332—038	---	4	25	CLAMP PLATE	38349—406	14000	1
6 *	NECK GASKET	38683—266	19020	1	26	VALVE STRAP	33276—041	19410	1
7	VALVE BODY	38343—014	14000	1	27	CHECK VALVE ASSY	46411—112	---	1
8 *	GASKET STRIP-42" LG	18515—031	---		28 *	—CHECK VALVE	38671—413	19020	1
9	STUD	C0406 1/2	17000	2	29	—LOCKWASHER	J#10	17000	1
10	HEX LOCK NUT	BC04	17000	2	30	—HEX NUT	D#10	17000	1
11	HEX HD CAPSCREW	B0402 1/2	17000	4	31	—SMALL VALVE WEIGHT	21161—810	---	1
12	LOCKWASHER	J04	17000	4	32	—HEX HD CAPSCREW	B#10—02	17000	1
13	BUTTON HD CAPSCREW	CM0806	17000	2	33	—LARGE VALVE WEIGHT	21161—811	---	1
14	HEX NUT	D08	17000	2	34	—SEALING WASHER	25123—056	---	1
15	LOCKWASHER	J08	17000	2	35	VALVE STRP PROTECTOR	33271—019	19000	2
16	PIPE PLUG	P04	15079	1		NOT SHOWN:			
17 *	PRIMING VALVE FLOAT	38349—404	19220	1		HEX HD CAPSCREW	B0807	15991	4
18	PRIMING CHAMBER	38343—015	10010	1		FLANGE GASKET	4991G	18000	1
19	GUIDE PLATE	33522—009	17000	2		HEX HD CAPSCREW	B1412	15991	12
20	FLAT HD CAPSCREW	F#10—03	17000	6		HEX NUT	D14	15991	12

* INDICATES PARTS RECOMMENDED FOR STOCK

THE GORMAN-RUPP COMPANY • MANSFIELD, OHIO

GORMAN-RUPP OF CANADA LIMITED • ST. THOMAS, ONTARIO, CANADA Printed in U.S.A.

**For U.S. and International Warranty Information,
Please Visit www.grpumps.com/warranty
or call:
U.S.: 419-755-1280
International: +1-419-755-1352**

**For Canadian Warranty Information,
Please Visit www.grcanada.com/warranty
or call:
519-631-2870**