

ACDE

Use With: OM--04760
MR--04885

PUBLICATION NUMBER PL-04950-01
DECEMBER 29, 1998



**PUMP MODEL
13A52 - GX390**

**MANUAL
PART 2 of 3**

**PARTS
LIST
WITH
PERFORMANCE CURVE**

THE GORMAN-RUPP COMPANY • MANSFIELD, OHIO

GORMAN-RUPP OF CANADA LIMITED • ST. THOMAS, ONTARIO, CANADA Printed in U.S.A.

©Copyright by the Gorman-Rupp Company



The engine exhaust from this product contains chemicals known to the State of California to cause cancer, birth defects or other reproductive harm.

PERFORMANCE CURVE – SECTION A

RECORDING MODEL AND SERIAL NUMBERS

Please record the pump model and serial number in the spaces provided below and in the separate Installation/Operation Manual accompanying your pump. Your Gorman-Rupp distributor needs this information when you require parts or service.

Pump Model: _____

Serial Number: _____

WARRANTY INFORMATION

The pump warranty is provided as part of Gorman-Rupp's support program for customers who operate and maintain their equipment as described in this manual and other accompanying literature. Please note that should the equipment be abused or modified to change its performance beyond the original factory specifications, the warranty will become void and any claim will be denied.

PERFORMANCE CURVES

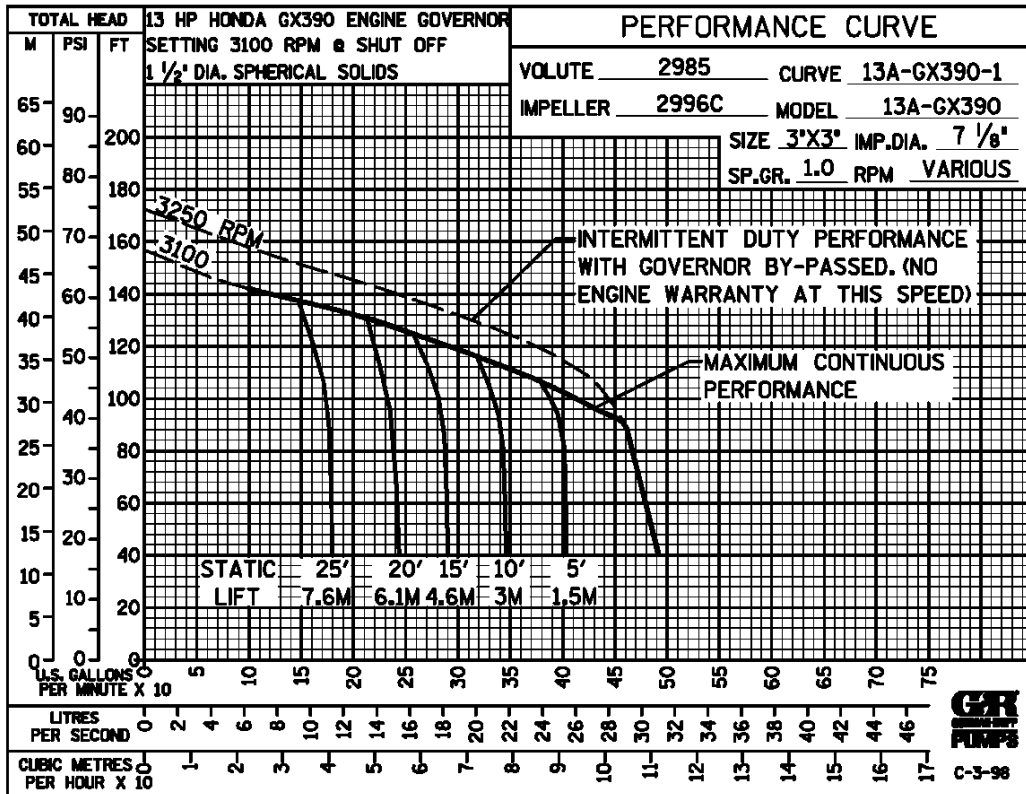
The performance curves on the following page are based on 70° F (21° C) clear water at sea level. Since pump installations are seldom identical, your performance may be different due to such factors as viscosity, specific gravity, elevation, temperature, and impeller trim.

If your pump serial number is followed by an "N", your pump is **NOT** a standard production model. Contact the Gorman-Rupp Company to verify performance or part numbers.

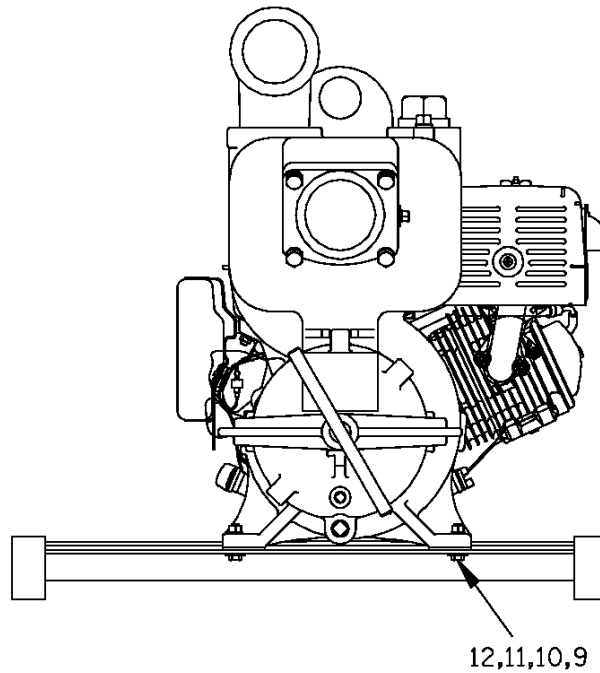
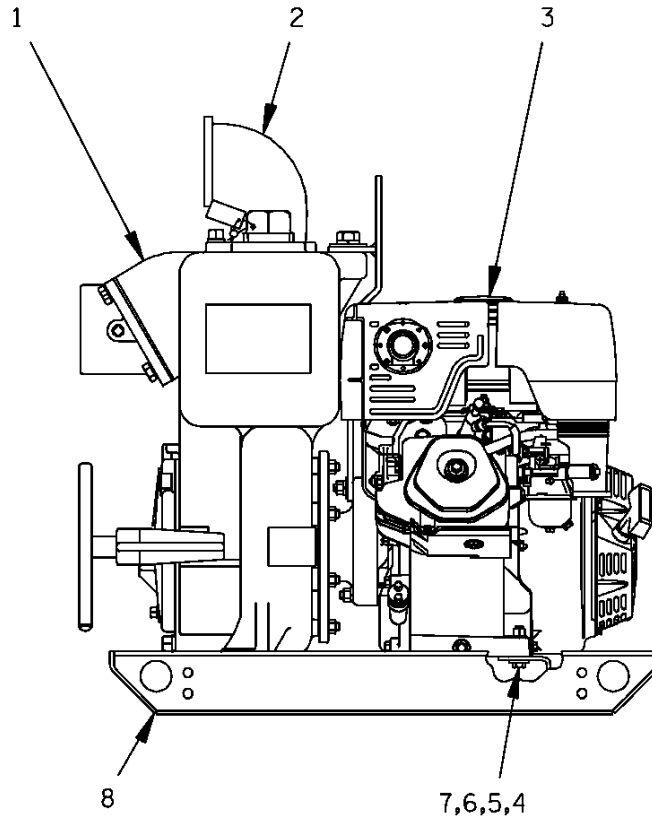


Pump speed and operating condition points must be within the continuous performance range shown on the curve(s).

This Page Intentionally Blank



Performance Curve – Model 13A52 –GX390



THE GORMAN-RUPP COMPANY • MANSFIELD, OHIO

GORMAN-RUPP OF CANADA LIMITED • ST. THOMAS, ONTARIO, CANADA Printed in U.S.A.

©Copyright by the Gorman-Rupp Company

13A52 – GX390

S/N 1178147

PUMP ISSUE 1

If your pump serial number is followed by an "N", your pump is NOT a standard production model. Contact the Gorman-Rupp Company to verify part numbers.

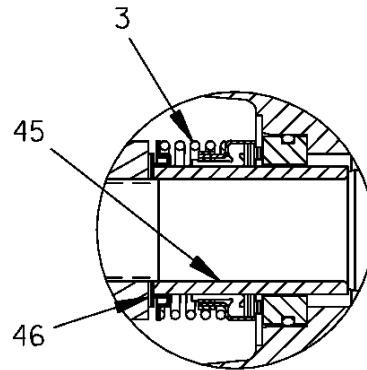
ITEM NO.	PART NAME	PART NUMBER	MAT'L CODE	QTY
1	PUMP END ASSY	13A52 – (GX390)	---	1
2	STREET ELBOW	RS48	11999	1
3	HONDA GX390 ENGINE	29122 – 036	---	1
4	HEX HD CAPSCREW	B0607	15991	2
5	FLAT WASHER	K06	15991	2
6	LOCKWASHER	J06	15991	2
7	HEX NUT	D06	15991	2
8	COMBINATION BASE	41566 – 113	24150	1
9	HEX HD CAPSCREW	B0606	15991	2
10	FLAT WASHER	K06	15991	2
11	LOCKWASHER	J06	15991	2
12	HEX NUT	D06	15991	2
NOT SHOWN:				
	WARNING DECAL	2613FE	---	1

* INDICATES PARTS RECOMMENDED FOR STOCK

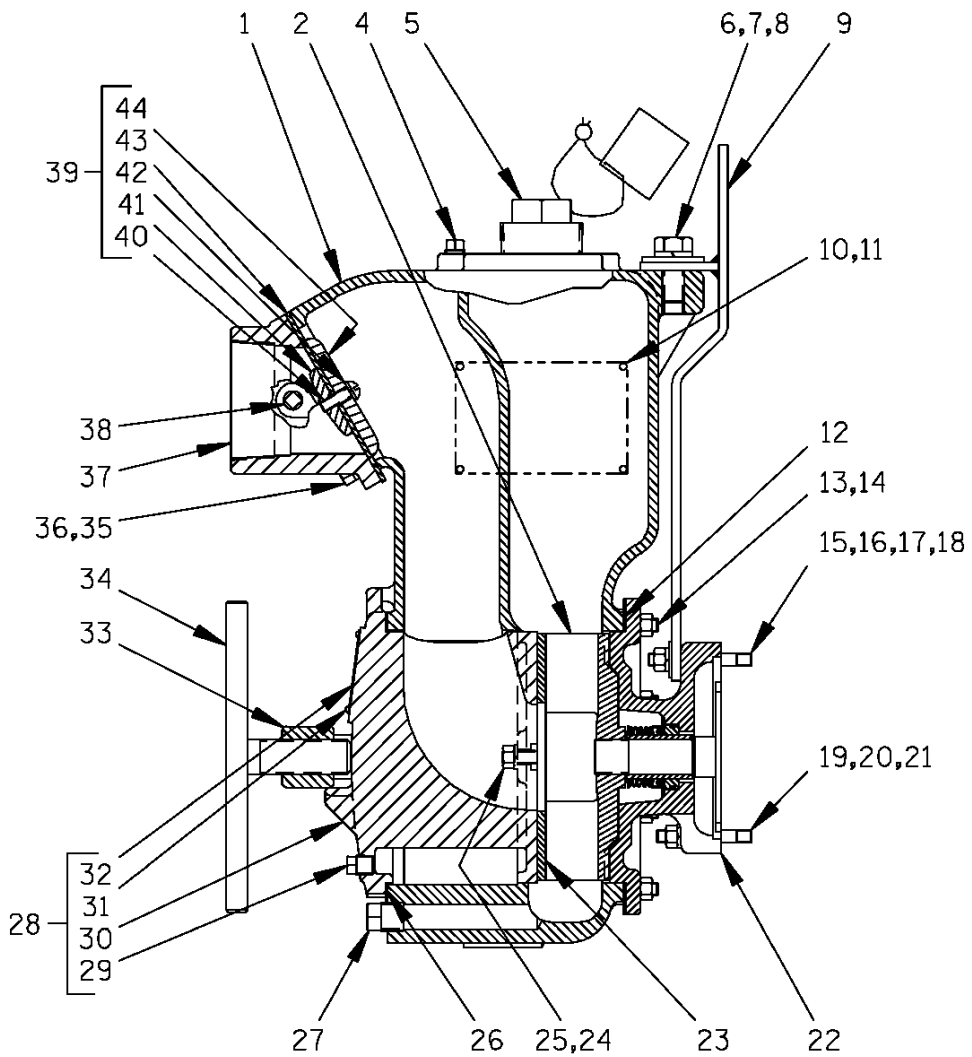
THE GORMAN-RUPP COMPANY • MANSFIELD, OHIO

GORMAN-RUPP OF CANADA LIMITED • ST. THOMAS, ONTARIO, CANADA Printed in U.S.A.

©Copyright by the Gorman-Rupp Company



SEAL AREA DETAIL



THE GORMAN-RUPP COMPANY • MANSFIELD, OHIO

GORMAN-RUPP OF CANADA LIMITED • ST. THOMAS, ONTARIO, CANADA Printed in U.S.A.

©Copyright by the Gorman-Rupp Company

13A52 – GX390

S/N 1178147

PUMP ISSUE 1

ITEM NO.	PART NAME	PART NUMBER	MAT'L CODE	QTY	ITEM NO.	PART NAME	PART NUMBER	MAT'L CODE	QTY
1	PUMP CASING	2985	10010	1	26 *	COVER PLATE GSKT	2985G	19090	1
2 *	IMPELLER	2996C	11010	1	27	CASING DRAIN PLUG	P08	11990	1
3 *	SEAL ASSY	25284-951	---	1	28	COVER PLATE ASSY	42111-921	---	1
4	ACCESSORY PLUG	P04	11990	1	29	-PIPE PLUG	P04	11990	1
5	FILL PLUG ASSY	48271-069	---	1	30	-BACK COVER PLATE	NOT AVAILABLE		1
6	HEX HD CAPSCREW	B1006	15991	1	31	-DRIVE SCREW	BM#04-03	17000	4
7	FLAT WASHER	K10	15991	1	32	-WARNING PLATE	2613EV	13990	1
8	LOCKWASHER	J10	15991	1	33	CVR CLAMP BAR	2987	11010	1
9	HOISTING BAIL ASSY	44711-023	24150	1	34	CLAMP BAR SCREW	2536	24000	1
10	NAME PLATE	38818-023	13990	1	35	HEX HD CAPSCREW	B0805	15991	4
11	DRIVE SCREW	BM#04-03	17000	4	36	LOCKWASHER	J08	15991	4
12 *	CASING GSKT SET	3G	18000	1	37	SUCTION FLANGE	2943	10010	1
13	STUD	C0606	15991	8	38	PIPE PLUG	P04	15079	1
14	HEX NUT	D06	15991	8	39	CHECK VALVE ASSY	1348	---	1
15	STUD	C0612	15991	2	40	-RD HD MACH SCREW	X0504	17090	1
16	FLAT WASHER	K06	15991	2	41 *	-VALVE WEIGHT	2944	10010	1
17	LOCKWASHER	J06	15991	2	42	-LOCKWASHER	J05	17090	1
18	HEX NUT	D06	15991	2	43 *	-CHECK VALVE GSKT	1348G	19070	1
19	STUD	C0611	15991	2	44 *	-VALVE WEIGHT	18B	10010	1
20	LOCKWASHER	J06	15991	2	45 *	SHAFT SLEEVE	2146M	---	1
21	HEX NUT	D06	15991	2	46 *	IMP ADJ SHIM SET	2X	17090	1
22	INTERMEDIATE	38264-328	10010	1					
23 *	WEAR PLATE ASSY	2634A	15990	1					
24	HEX NUT	D06	15991	2					
25	LOCKWASHER	J06	15991	2					
					NOT SHOWN:				
					STRAINER	4917	24001		1

* INDICATES PARTS RECOMMENDED FOR STOCK

THE GORMAN-RUPP COMPANY • MANSFIELD, OHIO

GORMAN-RUPP OF CANADA LIMITED • ST. THOMAS, ONTARIO, CANADA Printed in U.S.A.

©Copyright by the Gorman-Rupp Company

**For U.S. and International Warranty Information,
Please Visit www.grpumps.com/warranty**

or call:

U.S.: 419-755-1280

International: +1-419-755-1352

**For Canadian Warranty Information,
Please Visit www.grcanada.com/warranty**

or call:

519-631-2870

THE GORMAN-RUPP COMPANY • MANSFIELD, OHIO

GORMAN-RUPP OF CANADA LIMITED • ST. THOMAS, ONTARIO, CANADA