

ACEGU

Use With: OM-04760  
MR-04959

PUBLICATION NUMBER PL-05124-01

February 16, 2001

Rev. A 05/22/01



**PUMP MODEL**  
**13D-L70EE S/G**  
**13D-L70EE**

**MANUAL**  
**PART 2 of 3**

**PARTS**  
**LIST**  
**WITH**  
**PERFORMANCE CURVE**

**THE GORMAN-RUPP COMPANY • MANSFIELD, OHIO**

**GORMAN-RUPP OF CANADA LIMITED • ST. THOMAS, ONTARIO, CANADA** Printed in U.S.A.

©Copyright by the Gorman-Rupp Company



**The engine exhaust from this product contains chemicals known to the State of California to cause cancer, birth defects or other reproductive harm.**

## PERFORMANCE CURVE – SECTION A

### RECORDING MODEL AND SERIAL NUMBERS

Please record the pump model and serial number in the spaces provided below and in the separate Installation/Operation Manual accompanying your pump. Your Gorman-Rupp distributor needs this information when you require parts or service.

Pump Model: \_\_\_\_\_

Serial Number: \_\_\_\_\_

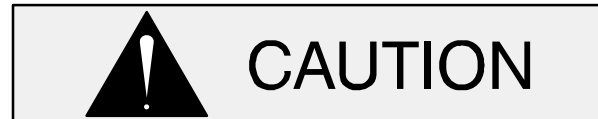
### WARRANTY INFORMATION

The pump warranty is provided as part of Gorman-Rupp's support program for customers who operate and maintain their equipment as described in this manual and other accompanying literature. Please note that should the equipment be abused or modified to change its performance beyond the original factory specifications, the warranty will become void and any claim will be denied.

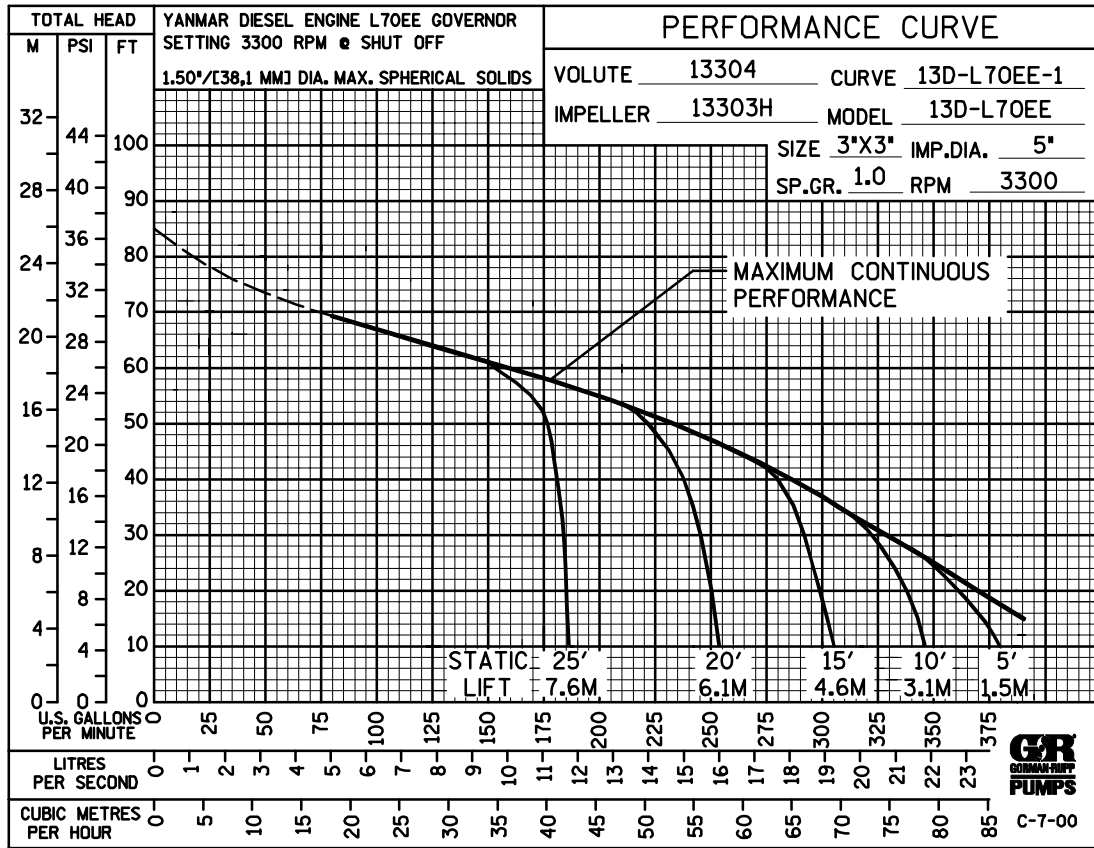
### PERFORMANCE CURVES

The performance curves on the following page are based on 70° F (21° C) clear water at sea level. Since pump installations are seldom identical, your performance may be different due to such factors as viscosity, specific gravity, elevation, temperature, and impeller trim.

If your pump serial number is followed by an "N", your pump is **NOT** a standard production model. Contact the Gorman-Rupp Company to verify performance or part numbers.

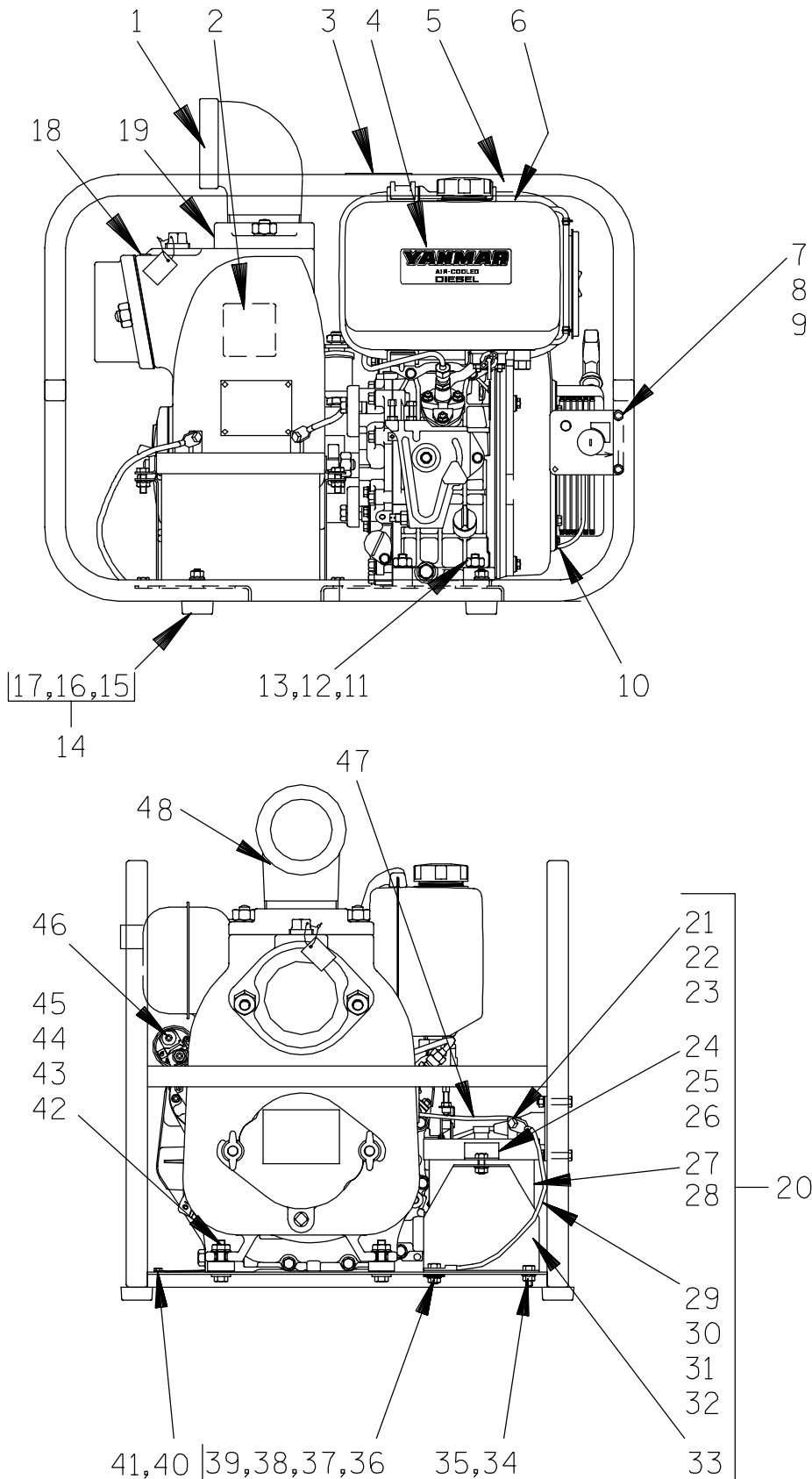


Pump speed and operating condition points must be within the continuous performance range shown on the curve(s).



Performance Curve – Model 13D-L70EE S/G

**This Page Intentionally Blank**



**THE GORMAN-RUPP COMPANY • MANSFIELD, OHIO**

GORMAN-RUPP OF CANADA LIMITED • ST. THOMAS, ONTARIO, CANADA

Printed in U.S.A.

# 13D—L70EE S/G

ACEGU

S/N 1217073 Up  
PUMP ISSUE 1

If your pump serial number is followed by an "N", your pump is **NOT** a standard production model. Contact the Gorman-Rupp Company to verify part numbers.

ITEM NO.	PART NAME	PART NUMBER	MAT'L CODE	QTY	ITEM NO.	PART NAME	PART NUMBER	MAT'L CODE	QTY
1	PUMP END ASSY	13D—(L70EE) PPO		1	27	—BATTERY	SEE OPTIONS		1
2	GREASE CUP INSTR	6588BD	----	1	28	—BATTERY TAG	38818—680	----	1
3	HAND CARRY DECAL	2613FT	----	2	29	—GRD CABLE	47311—542	----	1
4	YANMAR ENGINE	29239—032	----	1	30	—HEX HD CAPSCREW	B0503	15991	1
5	ROLLOVER BASE	41583—333	24150	1	31	—FLAT WASHER	K05	15991	1
6	WARNING DECAL	2613FE	----	1	32	—FLANGED HEX NUT	21765—312	----	1
7	HEX HD CAPSCREW	B0406	15991	2	33	—BATTERY BOX	11281	24000	1
8	LOCKWASHER	J04	15991	2	34	—HEX HD CAPSCREW	B0503	15991	3
9	HEX NUT	D04	15991	2	35	—FLANGED HEX NUT	21765—312	----	3
10	CABLE CLAMP	27111—102	----	1	36	—HEX HD CAPSCREW	B0503	15991	1
11	HEX HD CAPSCREW	B0607	15991	4	37	—FLAT WASHER	K05	15991	1
12	FLAT WASHER	K06	15991	4	38	—FLANGED HEX NUT	21765—312	----	1
13	FLANGED HEX NUT	21765—314	----	4	39	—T TYPE LOCKWASHER	BL05	15991	1
14 †	RUBBER FOOT MTG KIT	48152—607	----	1	40	TAPSCREW	21281—444	----	1
15	—MOUNTING FOOT	24631—401	----	4	41	T TYPE LOCKWASHER	AL#10	15991	1
16	—HEX HD CAPSCREW	B0506	15991	4	42	SPACER	31141—027	13000	2
17	—FLANGED HEX NUT	21765—312	----	4	43	HEX HD CAPSCREW	B0607	15991	2
18	PRIMING STICKER	6588AH	----	1	44	FLAT WASHER	K06	15991	2
19	DISCHARGE STICKER	6588BJ	----	1	45	FLANGED HEX NUT	21765—314	----	2
20	BATTERY BOX ASSY	GRP40—05	----	1	46	FLAT WASHER	K06	15991	1
21	—HEX HD CAPSCREW	B0503	15991	1	47	POS BATTERY CABLE	47311—504	----	1
22	—FLAT WASHER	K05	15991	1	48 †	STREET ELBOW	RS48	11999	REF
23	—FLANGED HEX NUT	21765—312	----	1		OPTIONAL:			
24	—BATTERY BOX COVER	11870	24000	1		WHEEL KIT	GRP30—54	----	1
25	—HEX HD CAPSCREW	B0504	15991	2		BATTERY	S1680	----	1
26	—FLANGED HEX NUT	21765—312	----	2					

\* INDICATES PARTS RECOMMENDED FOR STOCK

† ITEMS SHIPPED LOOSE WITH PUMP

**THE GORMAN-RUPP COMPANY • MANSFIELD, OHIO**

GORMAN-RUPP OF CANADA LIMITED • ST. THOMAS, ONTARIO, CANADA

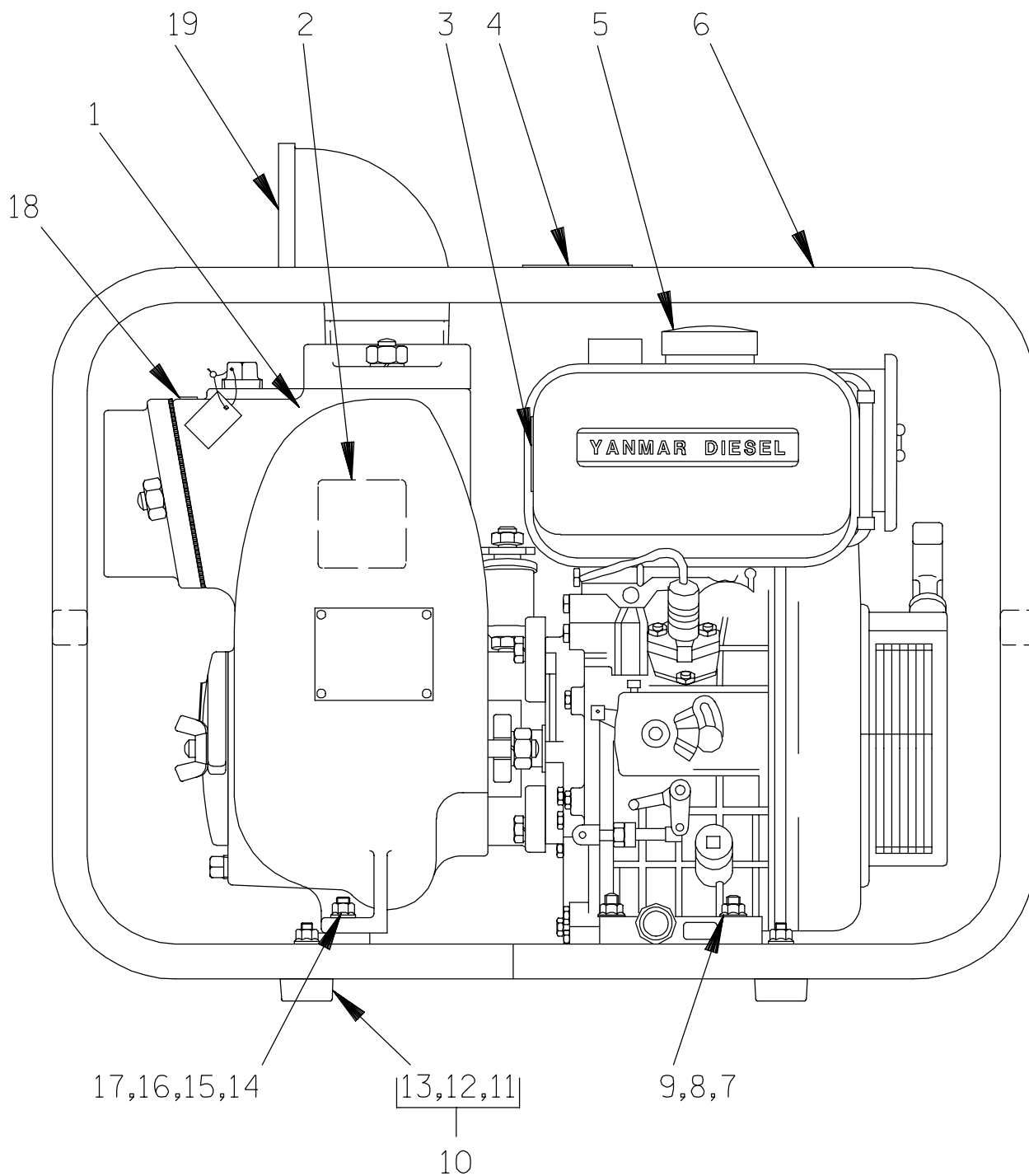
Printed in U.S.A.

2 of 6

February 15, 2001

©Copyright by the Gorman-Rupp Company

Page 10.3 D1.45



**THE GORMAN-RUPP COMPANY • MANSFIELD, OHIO**



# 13D—L70EE

ACEGU

## S/N 1217073 Up PUMP ISSUE 1

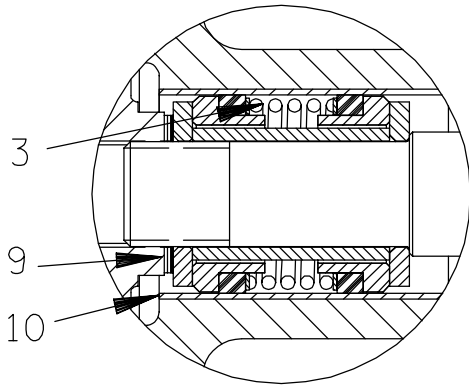
If your pump serial number is followed by an "N", your pump is **NOT** a standard production model. Contact the Gorman-Rupp Company to verify part numbers.

ITEM NO.	PART NAME	PART NUMBER	MAT'L CODE	QTY
1	PUMP END ASSY	13D—(L70EE) PPO	---	1
2	GREASE CUP INSTR	6588BD	---	1
3	WARNING DECAL	2613FE	---	1
4	HAND CARRY DECAL	2613FT	---	2
5	YANMAR ENGINE	29239—031	---	1
6	ROLLOVER BASE	41583—333	24150	1
7	FLAT WASHER	K06	15991	4
8	HEX HD CAPSCREW	B0607	15991	4
9	FLANGED HEX NUT	21765—314	---	4
10	† RUBBER FOOT MTG KIT	48152—607	---	1
11	—MOUNTING FOOT	24631—401	---	4
12	—HEX HD CAPSCREW	B0506	15991	4
13	—FLANGED HEX NUT	21765—312	---	4
14	FLAT WASHER	K06	15991	2
15	HEX HD CAPSCREW	B0607	15991	2
16	SPACER	31141—027	13000	2
17	FLANGED HEX NUT	21765—314	---	2
18	PRIMING STICKER	6588AH	---	1
19	† STREET ELBOW	RS48	11999	REF
OPTIONAL:				
	WHEEL KIT	GRP30—54	---	1

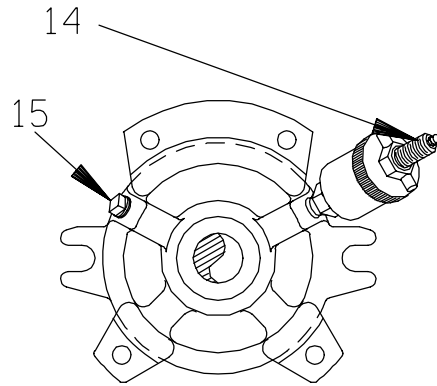
\* INDICATES PARTS RECOMMENDED FOR STOCK

† ITEMS SHIPPED LOOSE WITH PUMP

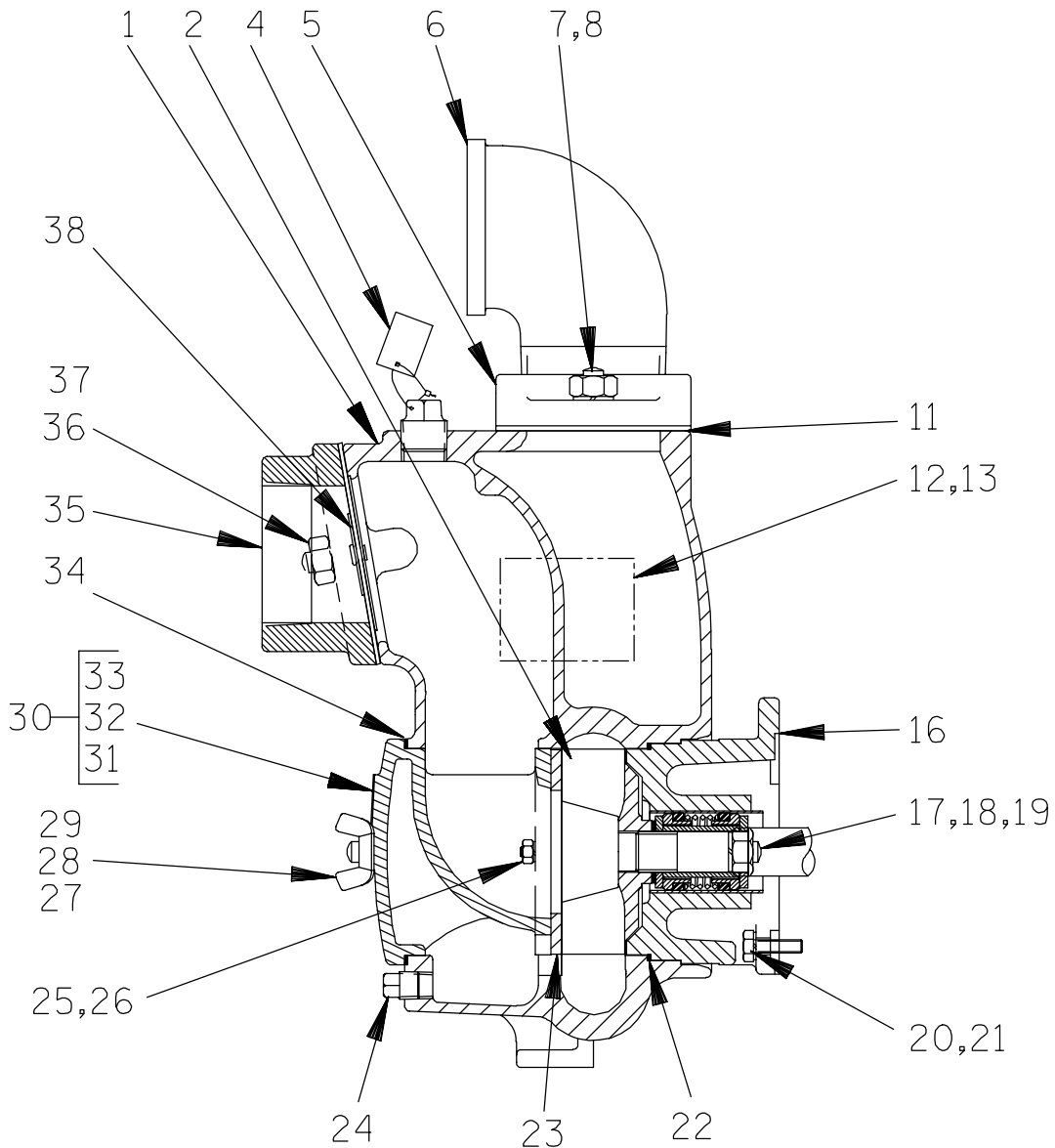
**THE GORMAN-RUPP COMPANY • MANSFIELD, OHIO**



SEAL AREA DETAIL



DRIVE END VIEW



**THE GORMAN-RUPP COMPANY • MANSFIELD, OHIO**

GORMAN-RUPP OF CANADA LIMITED • ST. THOMAS, ONTARIO, CANADA

Printed in U.S.A.

**13D—(L70EE S/G)**  
**13D—(L70EE)**

**ACEGU**

**S/N 1217073 Up**  
**PUMP ISSUE 1**

ITEM NO.	PART NAME	PART NUMBER	MAT'L CODE	QTY	ITEM NO.	PART NAME	PART NUMBER	MAT'L CODE	QTY
1	PUMP CASING	13304	13040	1	21	LOCKWASHER	21171-510	---	4
2 *	IMPELLER	13303H	11060	1	22	INTERMEDIATE O-RING	25152-248	---	1
3 *	GREASE SEAL ASSY	46521-014	---	1	23 *	WEAR PLATE	2643B	15990	1
4	FILL PLUG ASSY	48271-063	---	1	24	CASING DRAIN PLUG	P06	15079	1
5	DISCHARGE FLANGE	13427	13040	1	25	LOCKWASHER	J04	15991	2
6	STREET ELBOW	RS48	11999	1	26	HEX NUT	D04	15991	2
7	STUD	C0807	15991	2	27	STUD	C0808	15991	2
8	HEX NUT	D08	15991	2	28	FLAT WASHER	K08	15991	2
9 *	IMP ADJ SHIM SET	2X	17090	REF	29	WING NUT	BB08	15991	2
10 *	SEAL LINER	83	14080	REF	30	BACK CVR ASSY	42111-919	---	1
11	DISCH FLANGE GSKT	13428	2000	1	31	-WARNING PLATE	2613EV	13990	1
12	NAME PLATE	38818-021	13990	1	32	-DRIVE SCREW	BM#04-03	17000	4
13	DRIVE SCREW	BM#04-03	17000	4	33	-BACK COVER PLATE	NOT AVAILABLE		1
14	GREASE CUP	S36	---	1	34 *	BACK COVER GSKT	12369G	20000	1
15	PIPE PLUG	P04	15079	1	35	SUCTION FLANGE	13425	13040	1
16	INTERMEDIATE BRKT	38264-222	13040	1	36	STUD	C0807	15991	2
17	STUD	C0808	15991	2	37	HEX NUT	D08	15991	2
18	FLAT WASHER	K08	15991	2	38	CHECK VALVE ASSY	13426	---	1
19	HEX NUT	D08	15991	2		NOT SHOWN:			
20	HEX HD CAPSCREW	22645-135	---	4		STRAINER	4917	24001	1

\* INDICATES PARTS RECOMMENDED FOR STOCK

**THE GORMAN-RUPP COMPANY • MANSFIELD, OHIO**

GORMAN-RUPP OF CANADA LIMITED • ST. THOMAS, ONTARIO, CANADA

Printed in U.S.A.

6 of 6

February 15, 2001

©Copyright by the Gorman-Rupp Company

Page 10.3 D1.45

**For U.S. and International Warranty Information,  
Please Visit [www.grpumps.com/warranty](http://www.grpumps.com/warranty)  
or call:  
U.S.: 419-755-1280  
International: +1-419-755-1352**

**For Canadian Warranty Information,  
Please Visit [www.grcanada.com/warranty](http://www.grcanada.com/warranty)  
or call:  
519-631-2870**