



VARIOUS PATENTS APPLY

# Priming Assisted Centrifugal Enclosed Silent Pump w/Autostart Model PA4E71C-3TNV88-ESP

Size 4" x 4"



Total Head		Capacity of Pump in Gallons per Minute (GPM) at Continuous Performance			
PSI	Feet				
47.3	109	180	180	180	180
43.3	100	260	300	330	330
39.0	90	335	445	485	500
34.7	80	360	490	570	600
30.3	70	370	515	625	680
26.0	60	380	533	650	742
21.7	50	390	550	678	775
17.3	40	400	570	705	810
<b>Suction Lift</b>		<b>25'</b>	<b>20'</b>	<b>15'</b>	<b>10'</b>



**PUMP SPECIFICATIONS**

**Size:** 4" x 4" (102 mm X 102 mm) Flanged.

**Casing:** Gray Iron 30.

Maximum Operating Pressure 79 psi (545 kPa).\*

**Semi-Open Type, Two Vane Impeller:** G-R Hard Iron.

Handles 3" (76,2 mm) Diameter Spherical Solids.

**Impeller Shaft:** Stainless Steel 17-4 PH.

**Externally Adjustable, Replaceable Wear Plate:** G-R Hard Iron.

**Bearing Housing:** Gray Iron 30.

**Seal Plate:** G-R Hard Iron.

**Seal:** Cartridge Type, Mechanical, Oil-Lubricated, Double Floating, Self-Aligning. Silicon Carbide Rotating and Stationary Faces. Stainless Steel 316 Stationary Seat. Fluorocarbon Elastomers (DuPont Viton® or Equivalent). Stainless Steel 18-8 Cage and Spring. Maximum Temperature of Liquid Pumped 160°F (71°C).\*

**Shaft Sleeve:** Alloy Steel 4130.

**Priming Chamber:** Gray Iron 30 Housing w/Stainless Steel Float and Linkage.

**Discharge Check Valve:** Ductile Iron Housing w/Buna-N Flapper.

**Radial Bearing:** Open Single Row Ball.

**Thrust Bearing:** Open Double Row Ball.

**Bearing and Seal Cavity Lubrication:** SAE 30 Non-Detergent Oil.

**Flanges:** Gray Iron 30.

**Gaskets:** Buna-N, Rubber, Cork, and Vegetable Fiber.

**O-Rings:** Buna-N.

**Hardware:** Standard Plated Steel.

**Bearing and Seal Cavity Oil Level Sight Gauges.**

\*Consult Factory for Applications Exceeding Maximum Pressure and/or Temperature Indicated.

**Standard Equipment:** Soundproof (Average 69.8 dBA at 23 feet [7 meters] Under Load) Lightweight Aluminum Hinged Lockable Flip Top Enclosure - Removable for Maintenance of Pump or Engine. Combination Skid Base w/Fuel Tank. Synchronous Belt-Driven Air Compressor. [Single Ball Type Float Switch](#). \*\*

**Optional Equipment:** 12V Battery. [Full Feature Control Panel](#) For Use w/Submersible Transducer Liquid Level Sensor (50 Ft. [15 M] Cable Standard, Alternate Lengths Available). Heated Priming Chamber.

\*\*15 m (50 Ft.) Standard Length; Dual Switches and Alternate Cable Lengths Available.

**WARNING!**

Do not use in explosive atmosphere or for pumping volatile flammable liquids.

**ENGINE SPECIFICATIONS**

**Model:** Yanmar 3TNV88.

**EPA Tier:** Interim Tier 4.

**Type:** Three Cylinder, Four Cycle, Liquid Cooled Diesel Engine.

**Displacement:** 100 Cu. In. (1,64 Liters).

**Lubrication:** Forced Circulation.

**Air Cleaner:** Dry Type.

**Fuel Tank:** 48.8 U.S. Gals. (181,7 Liters).

**Full Load Operating Time:** 45.2 Hrs.

**Starter:** 12V Electric.

**Standard Features:** Exhaust Silencer Muffler.

**Optional:** Electronic Fuel Level Sensor.

**Engine Control Features:** Control Box with Throttle Control, Tachometer, Coolant Temperature, Oil Pressure, Voltage and Overstart Indicators/Shutdowns. Manual/Stop/Auto Keyswitch. Audible Startup Warning Delay. Fuel Level Display/Alarm/Shutdown (For Use With Optional Fuel Level Sensor).

**YANMAR PUBLISHED PERFORMANCE:**

Maximum Intermittent Net  
36 HP (26,9 kW) @ 3000 RPM



**GORMAN-RUPP PUMPS**

www.grpumps.com

Specifications Subject to Change Without Notice

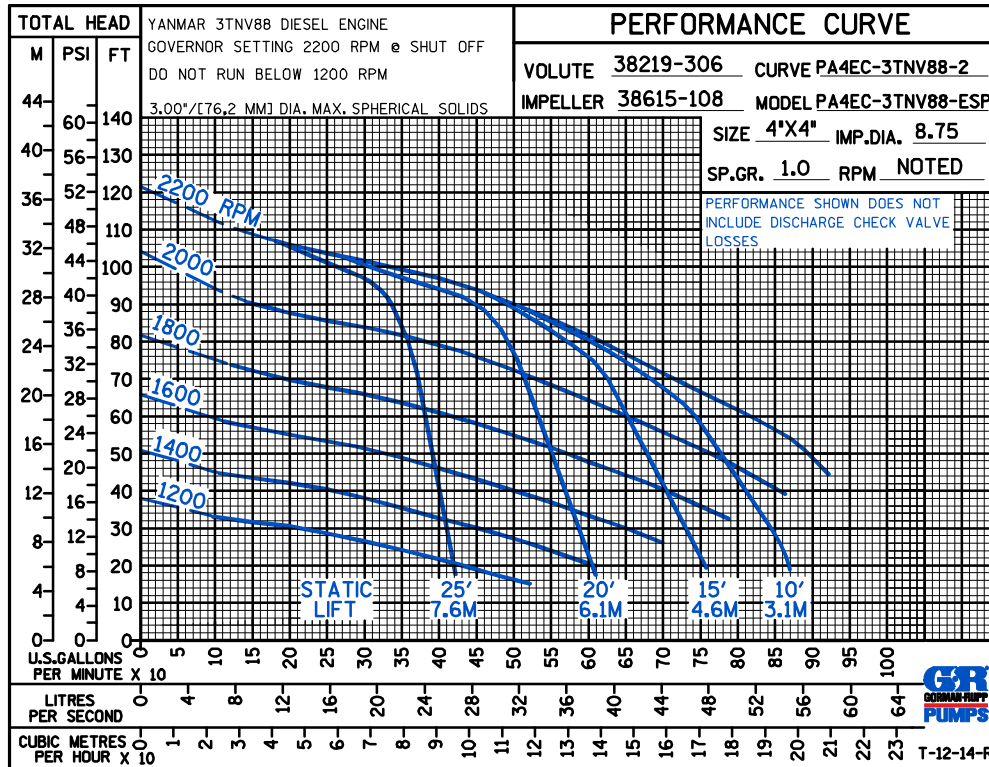
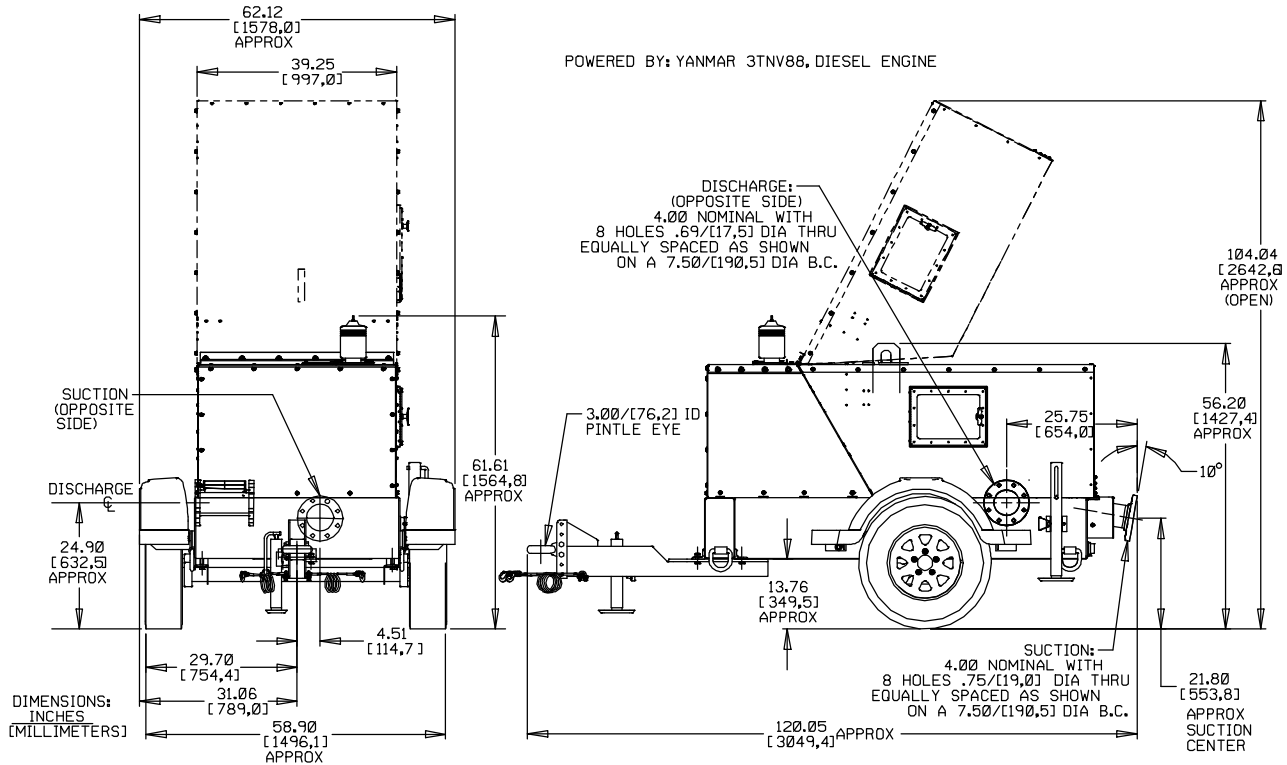
Printed in U.S.A.

**Specification Data**

SECTION 42, PAGE 196

APPROXIMATE  
DIMENSIONS and WEIGHTS

**NET WEIGHT:** 2730 LBS. (1238,3 KG.)  
**CRATED WEIGHT:** 3100 LBS. (1406,1 KG.)  
**CRATE SIZE:** 305 CU. FT. (8,6 CU. M.)



**GORMAN-RUPP PUMPS**

www.grpumps.com

Specifications Subject to Change Without Notice

Printed in U.S.A.