



VARIOUS PATENTS APPLY

Priming Assisted Centrifugal Enclosed Silent Pump w/Autostart Model PA4E71C-C1.7T FT4-ESP

Size 4" x 4"



Total Head		Capacity of Pump in Gallons per Minute (GPM) at Continuous Performance			
PSI	Feet				
46.4	107	175	175	175	175
43.3	100	265	305	340	340
34.7	80	360	492	570	600
26.0	60	380	533	650	742
17.3	40	400	568	705	810
8.7	20	420	605	755	868
Suction Lift		25'	20'	15'	10'



PUMP SPECIFICATIONS

Size: 4" x 4" (102 mm X 102 mm) Flanged.

Casing: Gray Iron 30.

Maximum Operating Pressure 79 psi (545 kPa).*

Semi-Open Type, Two Vane Impeller: G-R Hard Iron.

Handles 3" (76,2 mm) Diameter Spherical Solids.

Impeller Shaft: Stainless Steel 17-4 PH.

Externally Adjustable, Replaceable Wear Plate: G-R Hard Iron.

Bearing Housing: Gray Iron 30.

Seal Plate: G-R Hard Iron.

Seal: Cartridge Type, Mechanical, Oil-Lubricated, Double Floating, Self-Aligning. Silicon Carbide Rotating and Stationary Faces. Stainless Steel 316 Stationary Seat. Fluorocarbon Elastomers (DuPont Viton® or Equivalent). Stainless Steel 18-8 Cage and Spring. Maximum Temperature of Liquid Pumped 160°F (71 °C).*

Shaft Sleeve: Alloy Steel 4130.

Priming Chamber: Gray Iron 30 Housing w/Stainless Steel Float and Linkage.

Discharge Check Valve: Ductile Iron Housing with Welded Nickel Seat and Buna-N Flapper.

Radial Bearing: Open Single Row Ball.

Thrust Bearing: Open Double Row Ball.

Bearing and Seal Cavity Lubrication: SAE 30 Non-Detergent Oil.

Flanges: Gray Iron 30.

Gaskets: Buna-N, Rubber, Cork, and Vegetable Fiber.

O-Rings: Buna-N.

Hardware: Standard Plated Steel.

Bearing and Seal Cavity Oil Level Sight Gauges.

**Consult Factory for Applications Exceeding Maximum Pressure and/or Temperature Indicated.*

Standard Equipment: Soundproof (Average 73.4 dBA at 23 feet [7 meters] Under Load) Lightweight Aluminum Hinged Lockable Flip Top Enclosure - Removable for Maintenance of Pump or Engine. Combination Skid Base w/Fuel Tank. Wheel Kit. Synchronous Belt-Driven Air Compressor. . [Single Ball Type Float Switch](#). **

Optional Equipment: Battery. [Full Feature Control Panel](#) Two-Float Switch Kit

***15 m (50 Ft.) Standard Length; Dual Switches and Alternate Cable Lengths Available.*

WARNING!

Do not use in explosive atmosphere or for pumping volatile flammable liquids.

ENGINE SPECIFICATIONS

Model: CAT C1.7

EPA Tier: Tier 4.

Type: Three Cylinder, Four Cycle, Liquid Cooled Diesel Engine.

Displacement: 101 Cu. In. (1,66 Liters).

Lubrication: Forced Circulation.

Air Cleaner: Dry Type.

Fuel Tank: 48.4 U.S. Gals. (183,3 Liters).

Full Load Operating Time: 26.2 Hrs.

Starter: 12V Electric.

Standard Features: Rear Mounted DOC.

Optional: Electronic Fuel Level Sensor.

Engine Control Features: Control Box with Throttle Control, Tachometer, Coolant Temperature, Oil Pressure, Voltage and Overstart Indicators/Shutdowns. Manual/Stop/Auto Keyswitch. Audible Startup Warning Delay. Fuel Level Display/Alarm/Shutdown (For Use With Optional Fuel Level Sensor).

CATERPILLAR PUBLISHED PERFORMANCE:

Maximum Continuous Net
39 HP (29 kW) @ 2800 RPM



GORMAN-RUPP PUMPS

www.grpumps.com

Specifications Subject to Change Without Notice

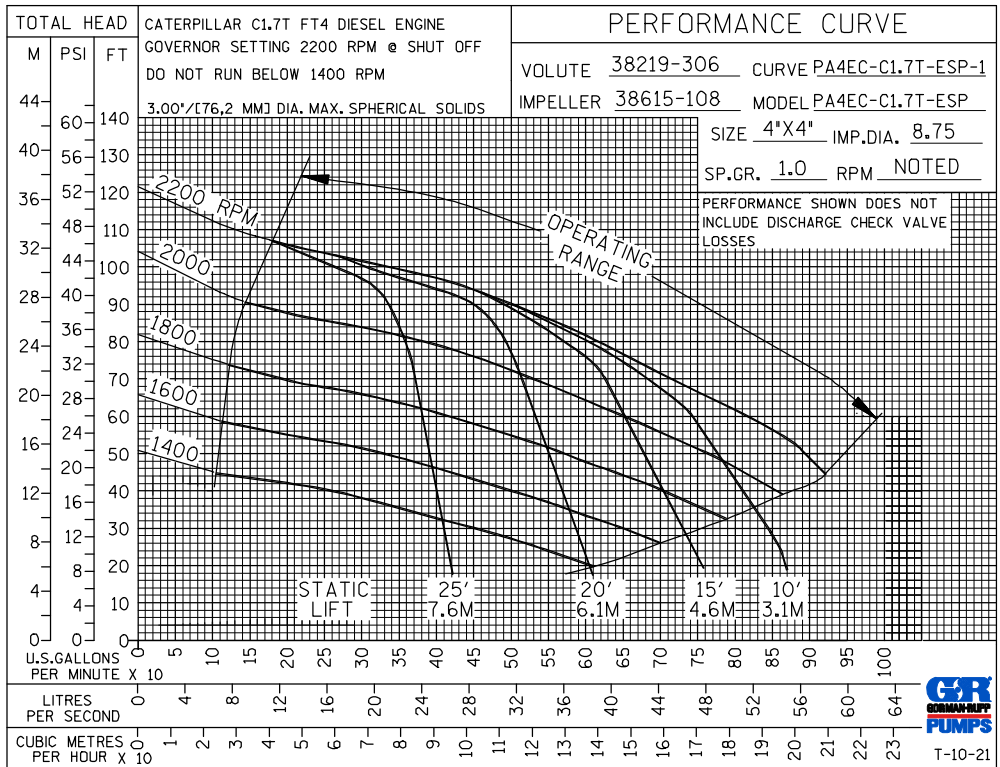
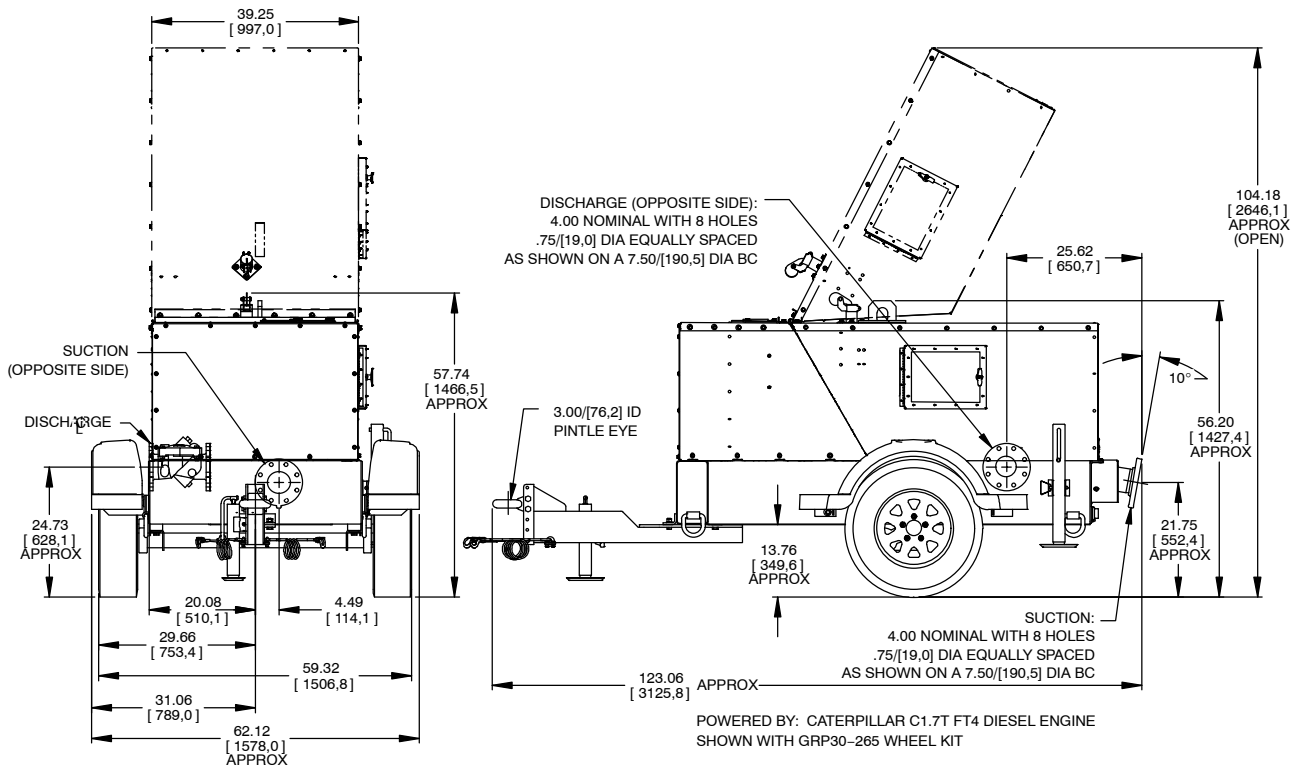
Printed in U.S.A.

Specification Data

SECTION 42, PAGE 198

APPROXIMATE
DIMENSIONS and WEIGHTS

NET WEIGHT: 2800 LBS. (1270,1 KG.)
CRATED WEIGHT: 3100 LBS. (1406,1 KG.)
CRATE SIZE: 294 CU. FT. (8,3 CU. M.)



GORMAN-RUPP PUMPS

www.grpumps.com

Specifications Subject to Change Without Notice

Printed in U.S.A.