



**Sound Attenuated
Diesel Engine Driven
Environmental Silent Pump
Priming Assisted Centrifugal Pump
w/Autostart
Model PA4A60C-C2.2T FT4-ESP
Size 4" x 4"**



Total Head		Capacity of Pump in U.S. Gallons per Minute (GPM) at Continuous Performance			
P.S.I.	Feet				
58.5	135	220	220	220	220
52.0	120	375	490	490	490
43.4	100	390	548	672	780
34.7	80	405	558	683	812
26.0	60	415	568	695	832
17.3	40	425	578	708	853
Suction Lift		25'	20'	15'	10'

PUMP SPECIFICATIONS

Size: 4" x 4" (102 mm x 102 mm) Flanged.

Casing: Gray Iron 30.

Maximum Operating Pressure 98 psi (676 kPa).*

Semi-Open Type, Two Vane Impeller: Ductile Iron 65-45-12.

Handles 3" (76.2 mm) Diameter Spherical Solids.

Impeller Shaft: Stainless Steel 17-4 PH.

Replaceable Wear Plate: Carbon Steel 1015.

Bearing Housing: Gray Iron 30.

Seal Plate: Gray Iron 30.

Seal: Cartridge Type, Mechanical, Oil-Lubricated, Double Floating, Self-Aligning. Silicon Carbide Rotating and Stationary Faces. Stainless Steel 316 Stationary Seat. Fluorocarbon Elastomers (DuPont Viton® or Equivalent). Stainless Steel 18-8 Cage and Spring. Maximum Temperature of Liquid Pumped 160°F (71°C).*

Shaft Sleeve: Alloy Steel 4130.

Priming Chamber: Gray Iron 30 Housing w/Stainless Steel Float and Linkage.

Discharge Check Valve: Ductile Iron Housing with Welded Nickel Seat and Buna-N Flapper.

Radial Bearing: Open Single Row Ball.

Thrust Bearing: Open Double Row Ball.

Bearing and Seal Cavity Lubrication: SAE 30 Non-Detergent Oil.

Gaskets: Vegetable Fiber.

O-Rings: Buna-N.

Hardware: Standard Plated Steel.

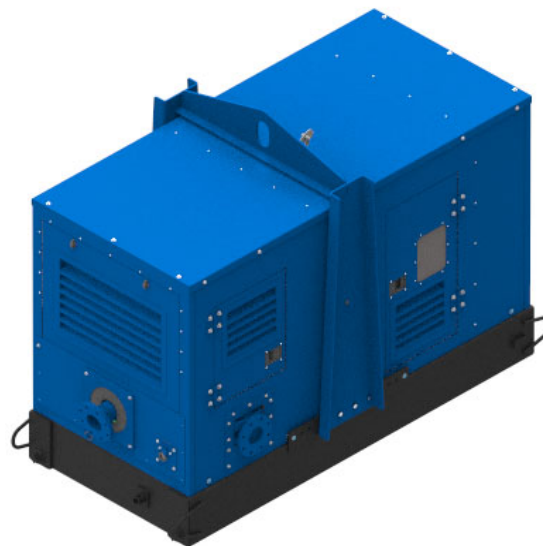
Bearing and Seal Cavity Oil Level Sight Gauges.

**Consult Factory for Applications Exceeding Maximum Pressure and/or Temperature Indicated.*

Standard Equipment: Belt-Driven Air Compressor. Hoisting Bail. Soundproof (EPA Average 72 dBA at 23 feet [7 meters] Under Load) Lightweight Aluminum Enclosure - Removable for Maintenance of Pump or Engine - w/Padlockable Door Panels. Combination Skid Base w/Fuel Tank. Full Feature Control Panel Single Ball Type Float Switch. **

Optional Equipment: Battery. High Speed (55 MPH/89 KM/H) Single Axle Pneumatic-Tired Wheel Kit w/w DOT-Approved Lights and Electric Brakes. Tandem Axle Over-the-Road Trailer (Meets DOT Requirements) Available w/Either Electric or Hydraulic Surge Brakes, Running Lights, Jack Stands and Safety Cables/Chains. Liquid Level Transducer.

***50 Ft. (15 m) Standard Length; Dual Switches and Alternate Cable Lengths Available From the Factory.*

**WARNING!**

Do not use in explosive atmosphere or for pumping volatile flammable liquids.

ENGINE SPECIFICATIONS

Model: Caterpillar C2.2T.

EPA Tier: Tier 4.

Type: Four Cylinder, Turbocharged Diesel Engine.

Displacement: 134 Cu. In. (2.2 Liters).

Lubrication: Forced Circulation.

Air Cleaner: Dry Type.

Fuel Tank: 70 U.S. Gals. (265 Liters).

Full Load Operating Time: 24 Hrs.

Starter: 12V Electric.

Standard Features: Muffler w/Weather Cap, DOC Exhaust After Treatment System.

Engine Control Features: Padlockable Box with Throttle Control, Tachometer, Coolant Temperature, Oil Pressure, Voltage and Overstart Indicators/Shut-downs. Manual/Stop/Auto Keyswitch. Audible Start-up Warning Delay. Electronic Fuel Level Sensor. Fuel Level Display/Alarm/Shutdown.

CATERPILLAR PUBLISHED PERFORMANCE:

Maximum Gross BHP (Intermittent)
49 (36.4 kW) @ 2800 RPM

**GORMAN-RUPP PUMPS**

www.grpumps.com

Specifications Subject to Change Without Notice

Printed in U.S.A.

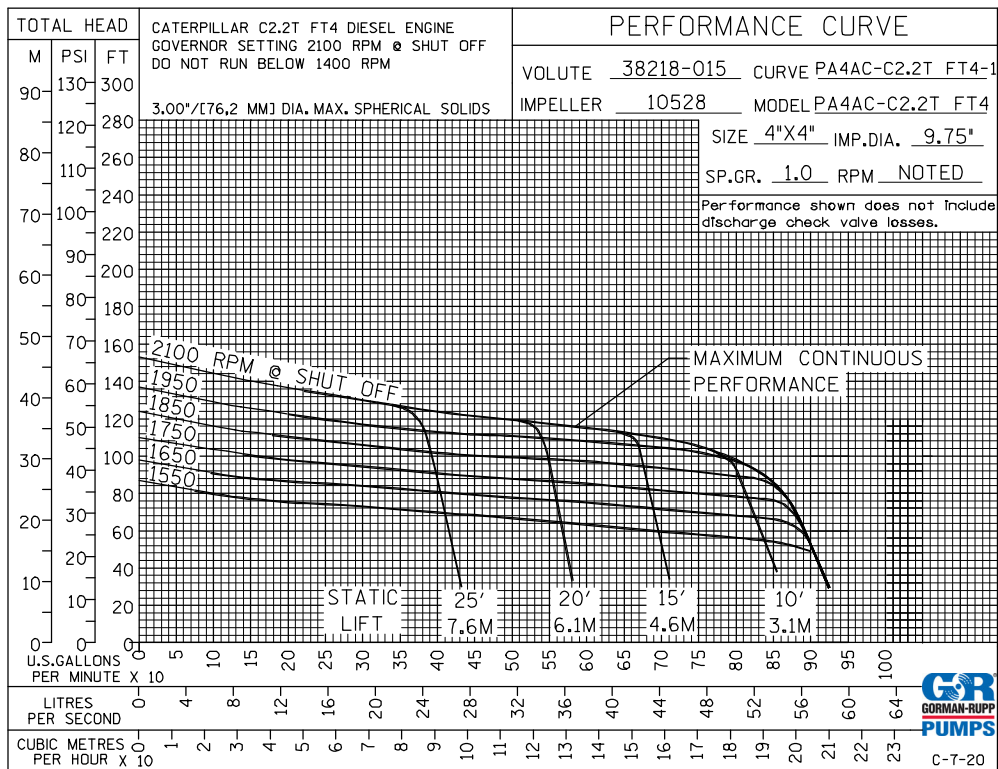
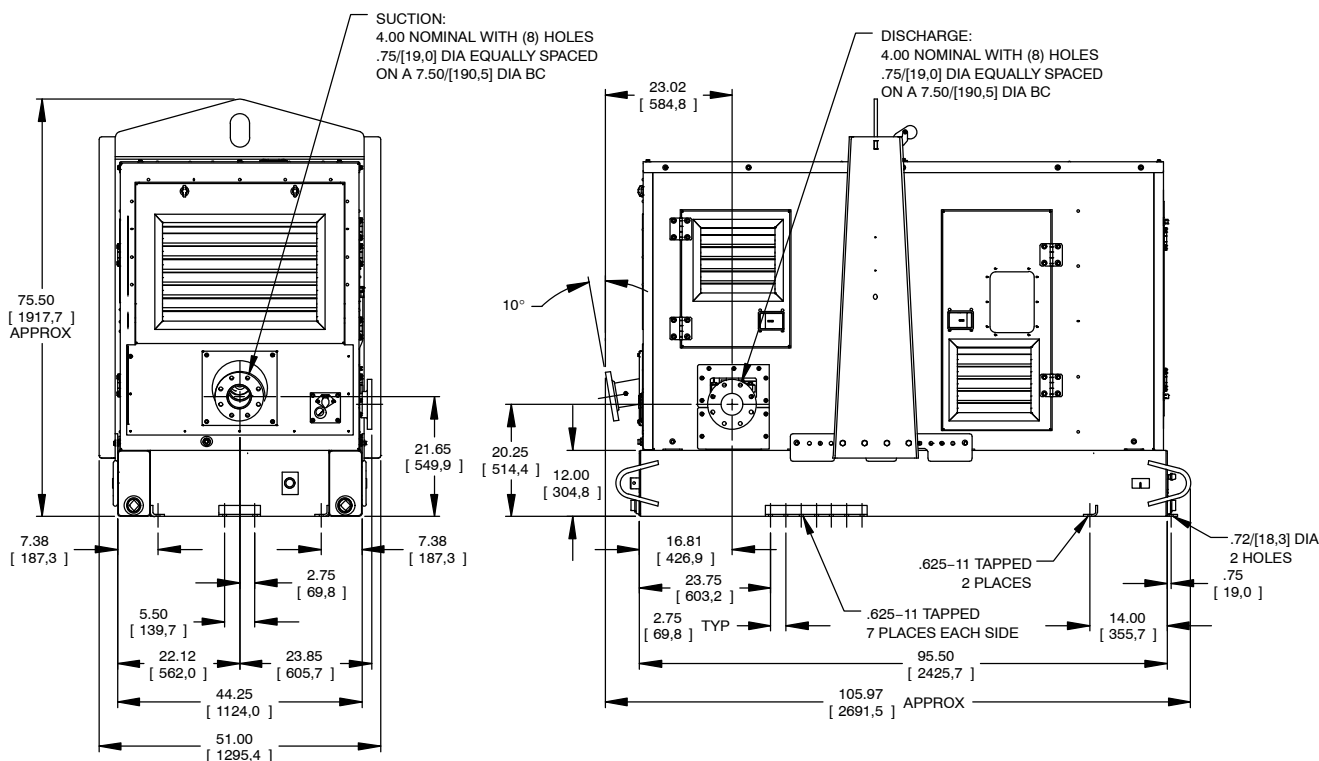
SECTION 42, PAGE 228

APPROXIMATE DIMENSIONS and WEIGHTS

NET WEIGHT:
SHIPPING WEIGHT:
EXPORT CRATE SIZE:

SKID BASE

3760 LBS. (1705,5 KG.)
3985 LBS. (1807,6 KG.)
278 CU. FT. (7,9 CU. M.)



GORMAN-RUPP PUMPS

www.grpumps.com

Specifications Subject to Change Without Notice

Printed in U.S.A.