



Priming Assisted Centrifugal Pump

Model PA10A60-B-E100 3P and PA10A60-B-E100 575/3

Size 10" x 10"



Total Head		Capacity of Pump in U.S. Gallons per Minute (GPM) at Continuous Performance				
P.S.I.	Feet					
49.4	114	1000	1000	1000	1000	1000
47.7	110	1220	1220	1220	1220	1220
43.3	100	1660	1820	1820	1820	1820
39.0	90	1860	2260	2560	2560	2560
34.7	80	1930	2460	2940	3080	3080
30.3	70	1980	2540	3050	3440	3480
26.0	60	2020	2580	3100	3600	3720
21.7	50	2060	2610	3140	3680	3880
17.3	40	2100	2640	3180	3720	3980
13.0	30	2140	2670	3220	3760	4040
8.7	20	2180	2700	3260	3800	4100
Suction Lift		24'	20'	15'	10'	5'



PUMP SPECIFICATIONS

Size: 10" x 10" (254 mm x 254 mm) Flanged.

Casing: Gray Iron 30. Maximum Operating Pressure 74 psi (510 kPa).*

Semi-Open Type, Two Vane Impeller: Ductile Iron 65-45-12.
Handles 3.25" (82,6 mm) Diameter Spherical Solids.

Suction Spool: Gray Iron 30.

Impeller Shaft: Stainless Steel 17-4 PH.

Replaceable Wear Ring: Ductile Iron 80-55-06.

Intermediate: Gray Iron 30.

Seal Plate: Gray Iron 30.

Seal: Cartridge Type, Mechanical, Oil-Lubricated, Double Floating, Self-Aligning. Silicon Carbide Rotating and Stationary Faces. Stainless Steel 316 Stationary Seat. Fluorocarbon (DuPont Viton® or Equivalent) Elastomers. Stainless Steel 316 Cage and Spring. Maximum Temperature of Liquid Pumped 160°F (71°C).*

Discharge Check Valve: Ductile Iron Housing w/Buna-N Flapper.

Priming Chamber: Gray Iron 30 Housing w/Stainless Steel Float and Linkage.

Radial Bearing: Open Single Row Ball.

Thrust Bearing: Open Double Row Ball.

Bearing and Seal Cavity Lubrication: SAE 30 Non-Detergent Oil.

Gaskets: Resistant Synthetic Rubber and Vegetable Fiber.

O-Rings: Buna-N.

Hardware: Standard Plated Steel.

Bearing and Seal Cavity Oil Level Sight Gauges.

*Consult Factory for Applications Exceeding Maximum Pressure and/or Temperature Indicated.

Standard Equipment: Belt-Driven Air Compressor. Hoisting Bail. Combination Skid Base w/Fuel Tank. Strainer.

Optional Equipment: Suction Vacuum and Discharge Pressure Gauge Kit. GR Hard Iron Impeller. Variable Frequency Controller.

Tandem Axle Over-the-Road Trailer. EPS w/Submersible Transducer Liquid Level Sensor (50 Ft. [15 M] Cable Standard, Alternate Lengths Available). Single and Double Float System (50 Ft. [15 M] Cable Standard, Alternate Lengths Available).



MOTOR SPECIFICATIONS‡

Type: Totally Enclosed Fan Cooled.

Frame Size: 405TZ.

Power: 100 H.P. (75 kW).

Hz: 60.

S.F.: 1.15.

Speed: 1800 RPM Nominal.

Locked Rotor kVA Code: G.

Bearings: Ball Type.

Model PA10A60-B-E100 3P

Voltage/Phase: 460/3.

Full Load Amps: 118.

Model PA10A60-B-E100 575/3

Voltage/Phase: 575/3.

Full Load Amps: 97.5.

CONTROL SPECIFICATIONS

NEMA Type 3R Intrinsically Safe Rain and Sleet (Ice) Resistant Enclosure. Carbon Steel with Powder Coat. Hand Off/Auto Switch Control with Across The Line Starter. 3 Pole Instantaneous Trip 150 Amp Circuit Breaker Type HMCP.

‡ Standard Specifications Shown. Alternate Motors Available - Consult Factory.



GORMAN-RUPP PUMPS

www.grpumps.com

Specifications Subject to Change Without Notice

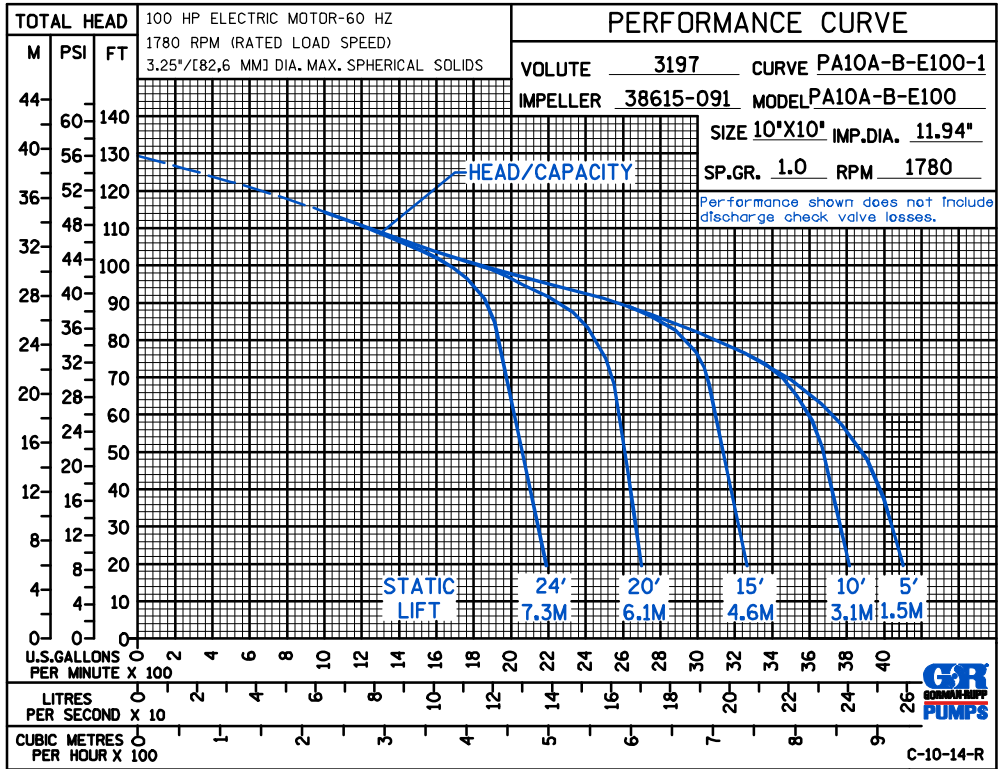
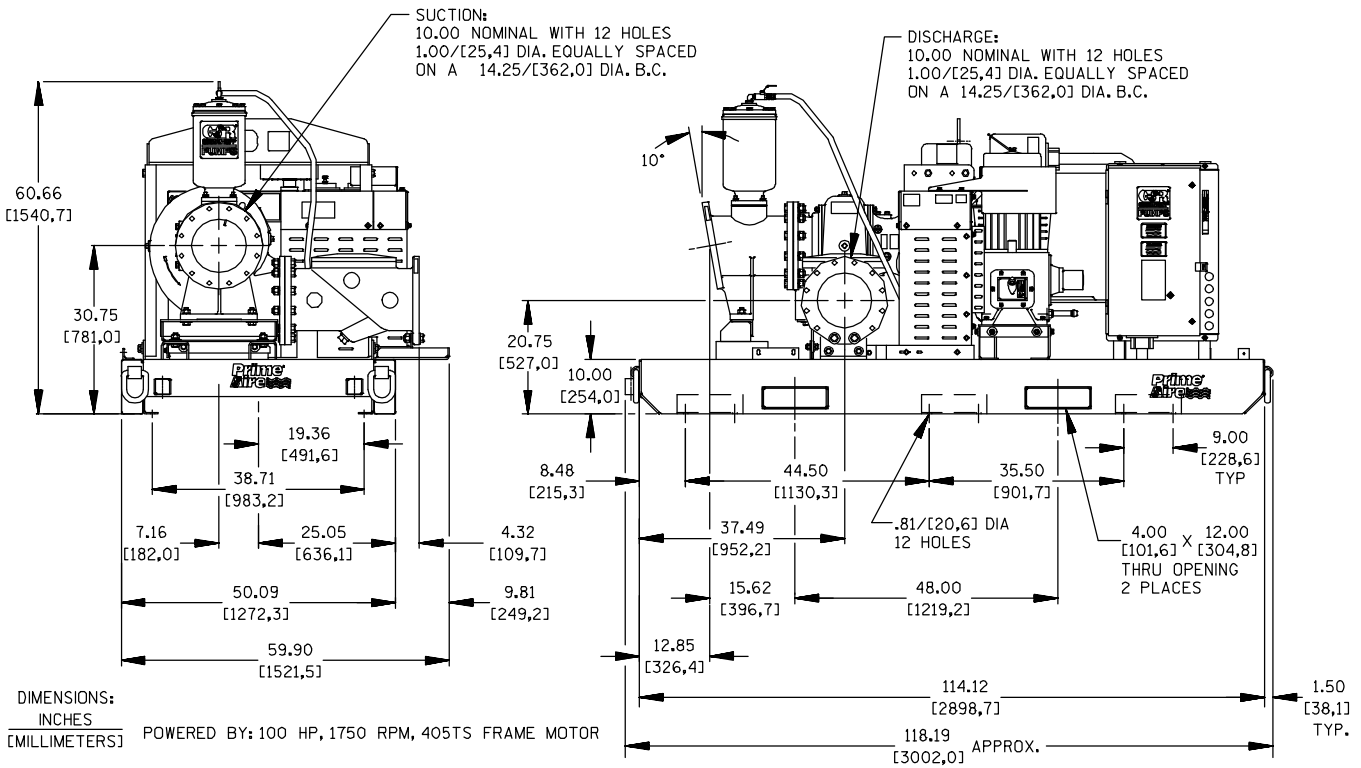
Printed in U.S.A.

Specification Data

SECTION 42, PAGE 1400

APPROXIMATE
DIMENSIONS and
WEIGHTS

	SKID BASE	2-WHEEL
NET WEIGHT:	4760 LBS. (2149 KG.)	5835 LBS. (2647 KG.)
SHIPPING WEIGHT:	5110 LBS. (2318 KG.)	5835 LBS. (2647 KG.)
EXPORT CRATE SIZE:	316 CU. FT. (8,9 CU. M.)	



GORMAN-RUPP PUMPS

www.grpumps.com

Specifications Subject to Change Without Notice

Printed in U.S.A.