



Priming Assisted Centrifugal Pump
w/Autostart

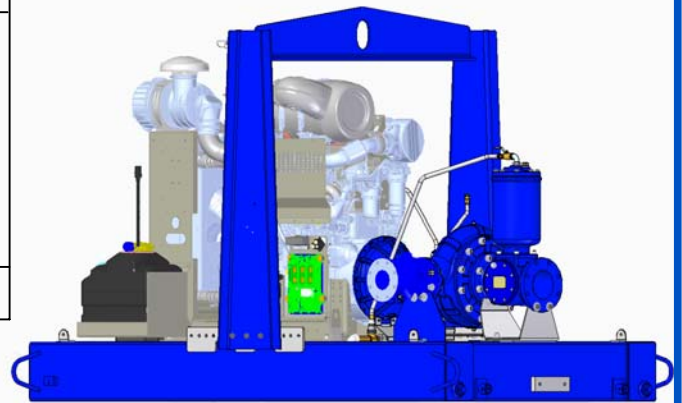
Model PAH4B65-4045H FT4

Size 6" x 4"



Total Head		Capacity of Pump in U.S. Gallons per Minute (GPM) at Continuous Performance				
P.S.I.	Feet					
101.9	235	400	400	400	N/A	N/A
97.5	225	640	640	640	N/A	N/A
86.7	200	920	1040	1040	N/A	N/A
75.9	175	960	1235	1420	760	760
65.0	150	960	1245	1550	1220	1220
54.2	125	960	1247	1570	1580	1580
43.4	100	960	1265	1570	1770	1840
32.5	75	960	1265	1575	1830	1910
21.7	50	960	1270	1580	1840	1920
10.8	25	960	1280	1580	1845	1930
Suction Lift		25'	20'	15'	±10'	±5'

‡Suction Lift Based On 1800 RPM Engine Speed.



PUMP SPECIFICATIONS

Size: 6" x 4" (152 mm x 102 mm) Flanged.

Casing: Stainless Steel CD4MCuN.

Maximum Operating Pressure 159 psi (1096 kPa).*

Enclosed Type, Two Vane Impeller: Stainless Steel CD4MCuN.

Handles 3" (76,2 mm) Diameter Spherical Solids.

Suction Head: Stainless Steel CD4MCuN.

Suction Spool: Stainless Steel CD4MCuN.

Impeller Shaft: Stainless Steel 17-4 PH..

Replaceable Wear Ring: Stainless Steel CD4MCuN.

Bearing Pedestal: Gray Iron 30.

Seal Plate: Stainless Steel CD4MCuN.

Seal: Mechanical, SAE 30 Non-Detergent Oil Lubricated. Silicon Carbide Rotating Face and Stationary Seat. Fluorocarbon Elastomers (DuPont Viton® or Equivalent). Stainless Steel 316 Cage and Stainless Steel 316 Spring. Maximum Temperature of Liquid Pumped 160 F (71 C).*

Shaft Sleeve: Stainless Steel 17-4 PH.

Priming Chamber: Stainless Steel 316 Housing w/Stainless Steel Float and Linkage.

Discharge Check Valve: Stainless Steel Housing w/Viton Flapper.

Radial Bearing: Open Roller.

Thrust Bearing: Open Double Ball.

Bearing Cavity Lubrication: Lithium EP2 Grease.

Gaskets: Fluorocarbon (DuPont Viton® or Equivalent), Compressed Synthetic Fibers and Buna-N.

O-Rings: Fluorocarbon (DuPont Viton® or Equivalent).

Hardware: Stainless Steel 316 and 17-4 PH.

Seal Cavity Oil Level Sight Gauges.

*Consult Factory for Applications Exceeding Maximum Pressure and/or Temperature Indicated.

Standard Equipment: Gear-Driven Air Compressor. Heated Priming Chamber Kit. Hoisting Bail. Combination Skid Base w/Fuel Tank. [Single Ball Type Float Switch](#). [Full Feature Control Panel](#) **

Optional Equipment: Battery. Skid Drag Base Kit. Suction Vacuum and Discharge Pressure Gauge Kit. Wheel Kit w/ DOT-Approved Lights and Electric Brakes. [Tandem Axle Over-the-Road Trailer](#). (Meets DOT Requirements) Available w/Either Electric or Hydraulic Surge Brakes, Running Lights, Jack Stands and Safety Chains/Cables. Liquid Level Transducer.

**50 Ft. (15 m) Standard Length; Dual Switches and Alternate Cable Lengths Available From the Factory.

WARNING!
Do not use in explosive atmosphere or for pumping volatile flammable liquids.

ENGINE SPECIFICATIONS

Model: John Deere 4045HFC04

EPA Tier: Tier 4.

Type: Four Cylinder, Turbocharged, Diesel Engine with Air Compressor.

Displacement: 276 Cu. In. (4,5 liters).

Lubrication: Forced Circulation.

Air Cleaner: Dry Type.

Fuel Tank: 110 U.S. Gals. (417 liters).

Full Load Operating Time: 20.5 Hrs.

Starter: 12V Electric.

Standard Features: Weather Cap. DOC/SCR Exhaust After Treatment System.

Engine Control Features: Padlockable Box with Throttle Control, Tachometer, Coolant Temperature, Oil Pressure, Voltage and Overstart Indicators/Shutdowns. Manual/Stop/Auto Key-switch. Audible Startup Warning Delay. Fuel Level Display/Alarm/Shutdown Electronic Fuel Level Sensor.

JOHN DEERE PUBLISHED PERFORMANCE:
Maximum Gross BHP (Continuous)
125 (93 kW) @ 2200 RPM



GORMAN-RUPP PUMPS

www.grpumps.com

Specifications Subject to Change Without Notice

Printed in U.S.A.

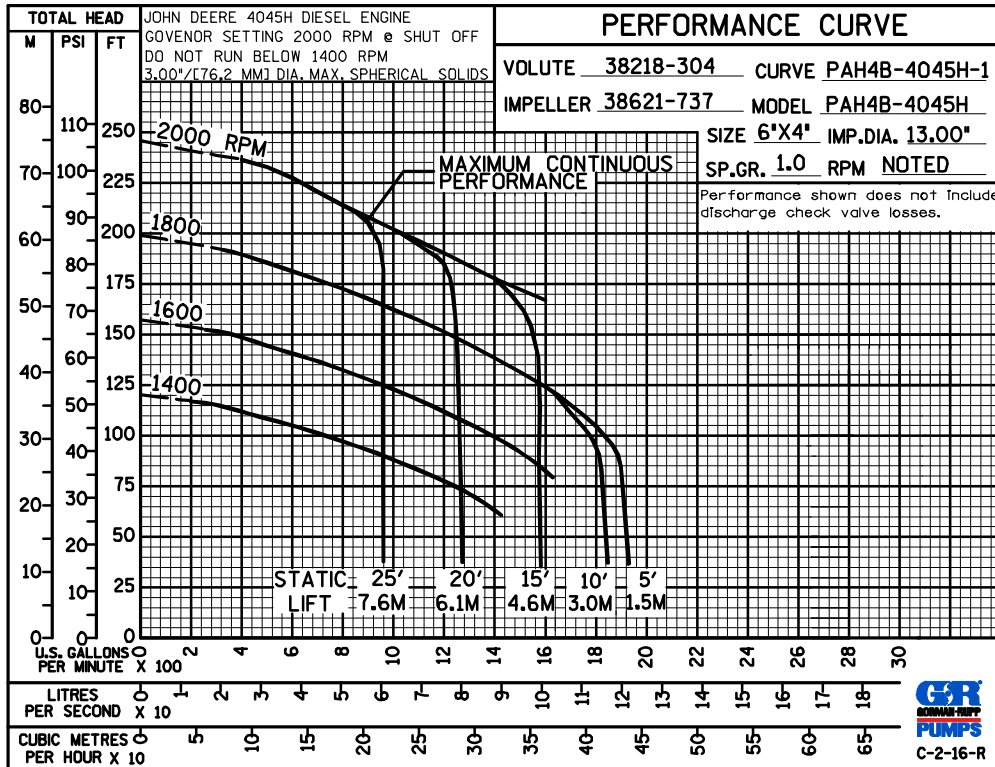
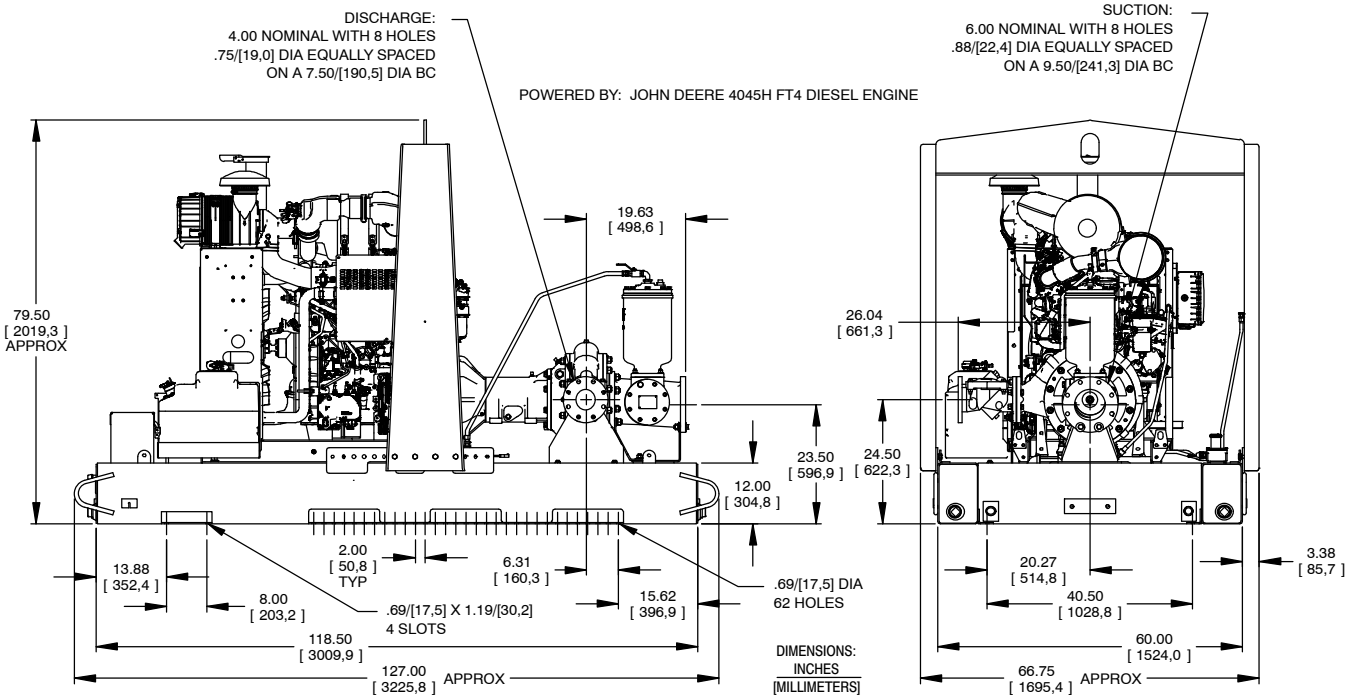
Specification Data

SECTION 43, PAGE 203

APPROXIMATE DIMENSIONS and WEIGHTS

NET WEIGHT:
SHIPPING WEIGHT:
EXPORT CRATE SIZE:

SKID BASE
4310 LBS. (1955,0 KG.)
4435 LBS. (2011,7 KG.)
453 CU. FT. (12,8 CU. M.)



GORMAN-RUPP PUMPS

www.grpumps.com

Specifications Subject to Change Without Notice

Printed in U.S.A.