



Priming Assisted Centrifugal Pump w/Autostart

Model PAH6A65-6090H

Size 10" x 6"



Total Head		Capacity of Pump in U.S. Gallons per Minute (GPM) at Continuous Performance			
P.S.I.	Feet				
135.2	312	1000	1000	1000	1000
121.4	280	1550	1750	1750	1750
104.0	240	1800	2700	3100	3100
86.7	200	1900	3050	4100	4100
69.4	160	1975	3200	3975	4600
52.0	120	2025	3250	4000	4825
34.7	80	2050	3300	4025	4900
17.3	40	2100	3350	4050	4925
Suction Lift		25'	20'	15'	10'



SHOWN WITH OPTIONAL WHEEL KIT

PUMP SPECIFICATIONS

Size: 10" x 6" (254 mm x 152 mm) Flanged.

Casing: Stainless Steel CD4MCu.

Maximum Operating Pressure 231 psi (1593 kPa).*

Enclosed Type, Two Vane Impeller: Stainless Steel CD4MCu.

Handles 3" (76,2 mm) Diameter Spherical Solids.

Suction Head: Stainless Steel CD4MCu.

Suction Spool: Stainless Steel CD4MCu.

Impeller Shaft: Stainless Steel 17-4 PH.

Replaceable Wear Ring: Stainless Steel CD4MCu.

Bearing Pedestal: Gray Iron 30.

Seal Plate: Stainless Steel CD4MCu.

Seal: Mechanical, SAE 30 Non-Detergent Oil Lubricated, Silicon Carbide Rotating Face and Stationary Seat. Fluorocarbon Elastomers (DuPont Viton® or Equivalent). Stainless Steel 316 Cage and Stainless Steel 316 Spring. Maximum Temperature of Liquid Pumped 160 F (71 C).*

Shaft Sleeve: Stainless Steel 17-4 PH.

Priming Chamber: Stainless Steel 316 Housing w/Stainless Steel Float and Linkage.

Discharge Check Valve: Stainless Steel Housing w/Viton Flapper.

Radial Bearing: Open Roller.

Thrust Bearing: Open Double Ball.

Bearing Cavity Lubrication: Lithium EP2 Grease.

Gaskets: Fluorocarbon (DuPont Viton® or Equivalent), Compressed Synthetic Fibers and Buna-N.

O-Rings: Fluorocarbon (DuPont Viton® or Equivalent).

Hardware: Stainless Steel 316 and 17-4 PH.

Seal Cavity Oil Level Sight Gauges.

**Consult Factory for Applications Exceeding Maximum Pressure and/or Temperature Indicated.*

Standard Equipment: Strainer. Gear-Driven Air Compressor. Hoisting Bail. Combination Skid Base w/Fuel Tank. Single Ball Type Float Switch.**

Optional Equipment: Battery. Threaded Flange Kit. Suction Vacuum and Discharge Pressure Gauge Kit. High Speed (55 MPH/89 KM/H) Tandem Axle Pneumatic-Tired Wheel Kit w/wo DOT-Approved Lights and Electric Brakes. Tandem Axle Over-the-Road Trailer. Full Feature Control Panel For Use w/Submersible Transducer Liquid Level Sensor.**

***50 Ft. (15 m) Standard Length; Dual Switches and Alternate Cable Lengths Available From the Factory.*

WARNING!

Do not use in explosive atmosphere or for pumping volatile flammable liquids.

ENGINE SPECIFICATIONS

Model: John Deere 6090H "Power Tech."

EPA Tier: Tier 3.

Type: Six Cylinder, Four Cycle, Charge Air Cooled, Enclosed, Liquid Cooled Diesel Engine.

Displacement: 548 Cu. In. (9,0 liters).

Governor: Electronic Isochronous.

Lubrication: Forced Circulation.

Air Cleaner: Dry Type.

Fuel Tank: 262 U.S. Gals. (992 liters).

Full Load Operating Time: 17.9 Hrs.

Starter: 12V Electric.

Standard Features: Muffler w/Weather Cap.

Optional Features: Electronic Fuel Level Sensor.

Engine Control Features: Padlockable Box with Throttle Control, Tachometer, Coolant Temperature, Oil Pressure, Voltage and Overstart Indicators/Shutdowns. Manual/Stop/Auto Keyswitch. Audible Start-up Warning Delay. Fuel Level Display/Alarm/Shutdown (For Use With Optional Fuel Level Sensor).

JOHN DEERE PUBLISHED PERFORMANCE:
Maximum Gross BHP (Intermittent)
375 (280 kW) @ 2200 RPM



GORMAN-RUPP PUMPS

www.grpumps.com

Specifications Subject to Change Without Notice

Printed in U.S.A.

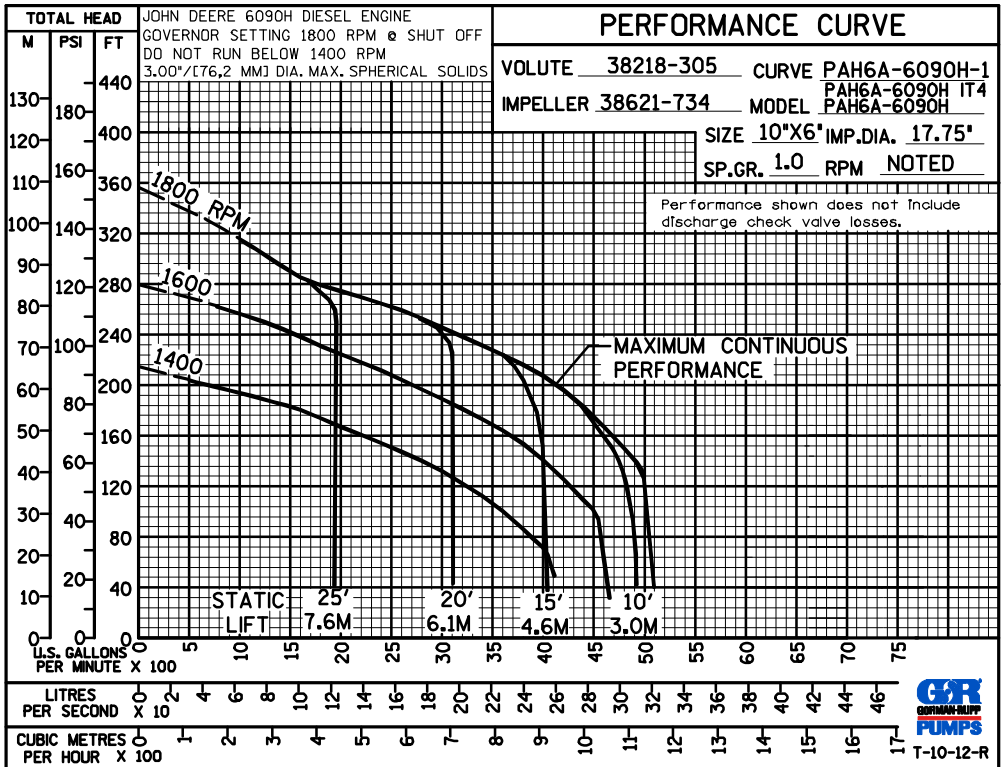
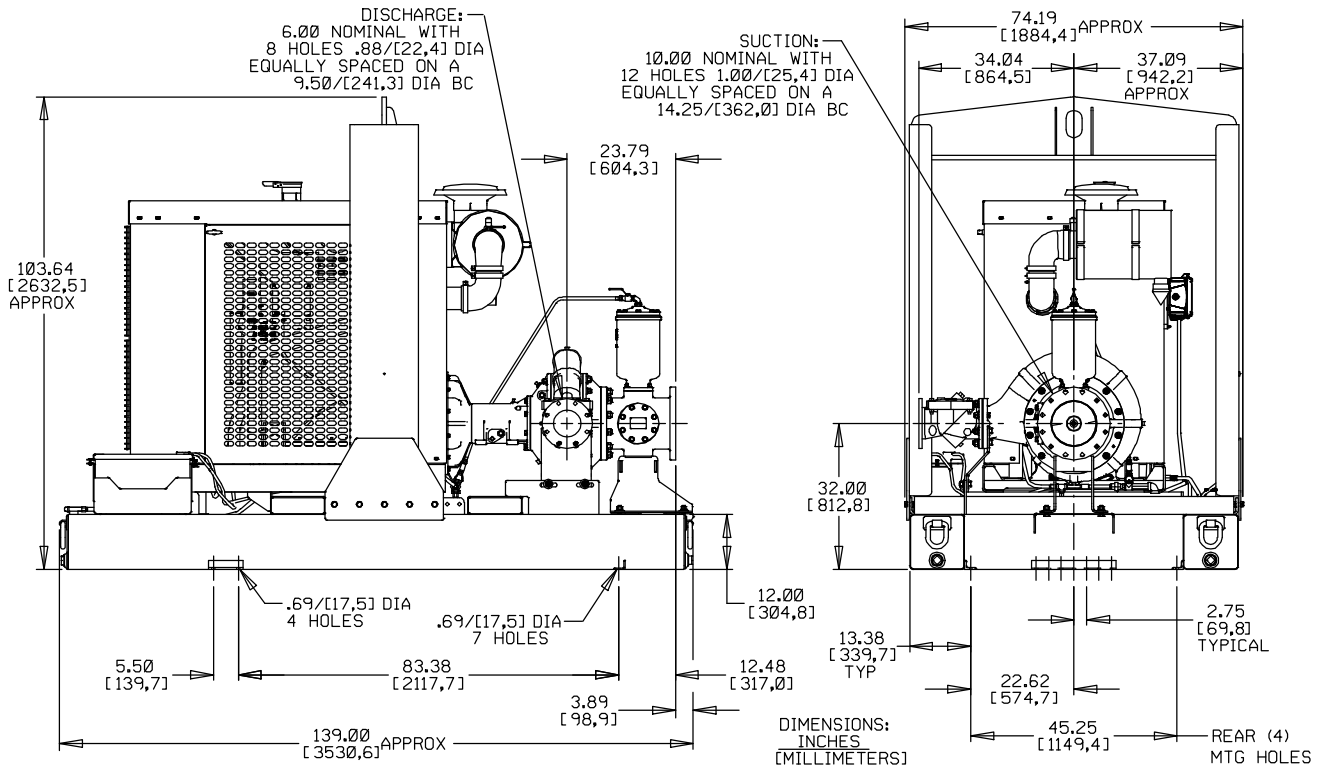
Specification Data

APPROXIMATE DIMENSIONS and WEIGHTS

SKID BASE
NET WT: 9700 LBS. (4440 KG.)
SHIPPING WT: 10200 LBS. (4626 KG.)
EXPORT CRATE SIZE: 719 CU. FT. (20 CU. M.)

WHEEL KIT
NET WT: 10200 LBS. (4626 KG.)
SHIPPING WT: 10200 LBS. (4626 KG.)

SECTION 43, PAGE 331



GORMAN-RUPP PUMPS

www.grpumps.com

Specifications Subject to Change Without Notice

Printed in U.S.A.