

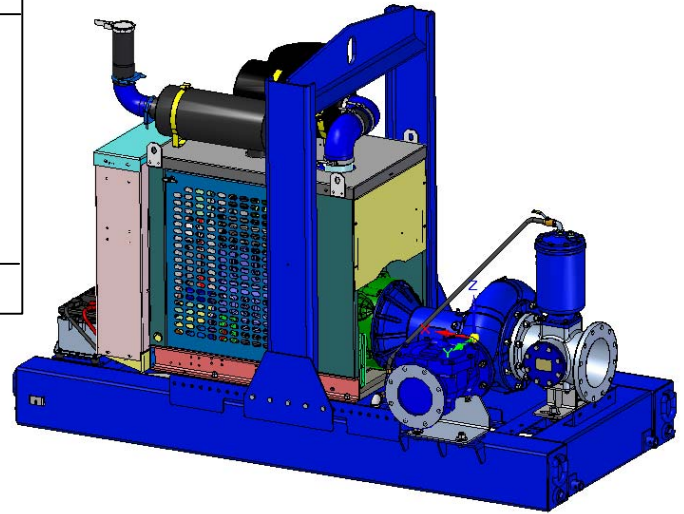


Priming Assisted Centrifugal Pump w/Autostart

Model PAH8C60-6068H Size 10" x 8"



Total Head		Capacity of Pump in U.S. Gallons per Minute (GPM) at Continuous Performance				
P.S.I.	Feet					
104.1	240	1050	1050	1050	1050	1050
86.7	200	1910	2300	2300	2300	2300
75.9	175	1930	2710	3070	3070	3070
65.0	150	1940	2760	3340	3750	3750
54.2	125	1940	2790	3350	3840	4170
43.6	100	1950	2800	3360	3850	4210
32.5	75	1960	2800	3370	3850	4250
21.7	50	1970	2810	3390	3850	4260
Suction Lift		25'	20'	15'	10'	5'



PUMP SPECIFICATIONS

- Size:** 10" x 8" (254 mm x 203,2 mm) Flanged.
- Casing:** Ductile Iron 65-45-12.
Maximum Operating Pressure 179 psi (1234 kPa).*
- Enclosed Type, Two Vane Impeller:** Ductile Iron 65-45-12.
Handles 3" (76,2 mm) Diameter Spherical Solids.
- Suction Head:** Gray Iron 30
- Suction Spool:** Gray Iron 30.
- Impeller Shaft:** Alloy Steel 4150M.
- Replaceable Wear Ring:** Ductile Iron 65-45-12.
- Bearing Pedestal:** Gray Iron 30.
- Seal Plate:** Gray Iron 30.
- Seal:** Mechanical, SAE 30 Non-Detergent Oil-Lubricated. Silicon Carbide Rotating Face and Stationary Seat. Fluorocarbon Elastomers (DuPont Viton® or Equivalent). Stainless Steel 316 Cage and Stainless Steel 18-8 Spring. Maximum Temperature of Liquid Pumped 160° F (71° C).*
- Shaft Sleeve:** Stainless Steel 303/304.
- Priming Chamber:** Gray Iron 30 Housing w/Stainless Steel Float and Linkage.
- Discharge Check Valve:** Ductile Iron Housing w/Buna-N Flapper.
- Radial Bearing:** Open Single Ball.
- Thrust Bearing:** Open Double Ball.
- Bearing Cavity Lubrication:** Lithium EP2 Grease.
- Gaskets:** Vegetable Fiber, Buna-N, Fluorocarbon (DuPont Viton® or Equivalent).
- O-Rings:** Buna-N.
- Hardware:** Standard Plated Steel.
- Seal Cavity Oil Level Sight Gauges.**

*Consult Factory for Applications Exceeding Maximum Pressure and/or Temperature Indicated.

Standard Equipment: Strainer. Gear-Driven Air Compressor. Hoisting Bail. Combination Skid Base w/Fuel Tank. **Single Ball Type Float Switch.****

Optional Equipment: Battery. Suction Vacuum and Discharge Pressure Gauge Kit. High Speed (55 MPH/89 KM/H) Tandem Axle Pneumatic-Tired Wheel Kit w/wo DOT-Approved Lights and Electric Brakes. Tandem Axle Over-the-Road Trailer (Meets DOT Requirements) Available w/Either Electric or Hydraulic Surge Brakes, Running Lights, Jack Stands and Safety Chains/Cables, **Full Feature Control Panel** For Use w/Submersible Transducer Liquid Level Sensor (50 Ft. [15 M]) Cable Standard, Alternate Lengths Available).

**50 Ft. (15 m) Standard Length; Dual Switches and Alternate Cable Lengths Available From the Factory.

WARNING!

Do not use in explosive atmosphere or for pumping volatile flammable liquids.

ENGINE SPECIFICATIONS

- Model:** John Deere 6068H "Power Tech."
- EPA Tier:** Tier 3.
- Type:** Six Cylinder, Four Cycle, Turbocharged, Charge Air Cooled, Enclosed, Liquid Cooled Diesel Engine.
- Displacement:** 415 Cu. In. (6,8 liters).
- Lubrication:** Forced Circulation.
- Air Cleaner:** Dry Type.
- Fuel Tank:** 130 U.S. Gals. (492 liters).
- Full Load Operating Time:** 14.4 Hrs.
- Starter:** 12V Electric.
- Standard Features:** Muffler w/Weather Cap..
- Optional:** Electronic Fuel Level Sensor.
- Engine Control Features:** Padlockable Box with Throttle Control, Tachometer, Coolant Temperature, Oil Pressure, Voltage and Overstart Indicators/Shutdowns. Manual/Stop/Auto Keyswitch. Audible Startup Warning Delay. Fuel Level Display/Alarm/Shutdown (For Use With Optional Fuel Level Sensor).

JOHN DEERE PUBLISHED PERFORMANCE:
Maximum Gross BHP (Ind/Hvy Duty)
225 (168 kW) @ 2200 RPM



GORMAN-RUPP PUMPS

www.grpumps.com

Specifications Subject to Change Without Notice

Printed in U.S.A.

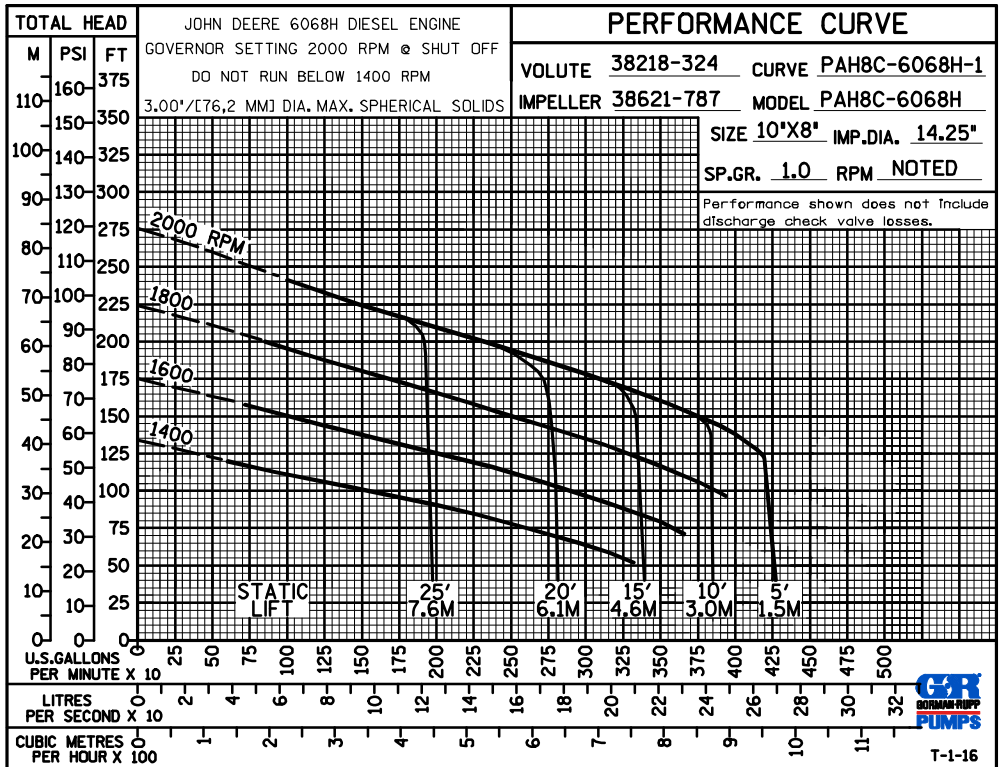
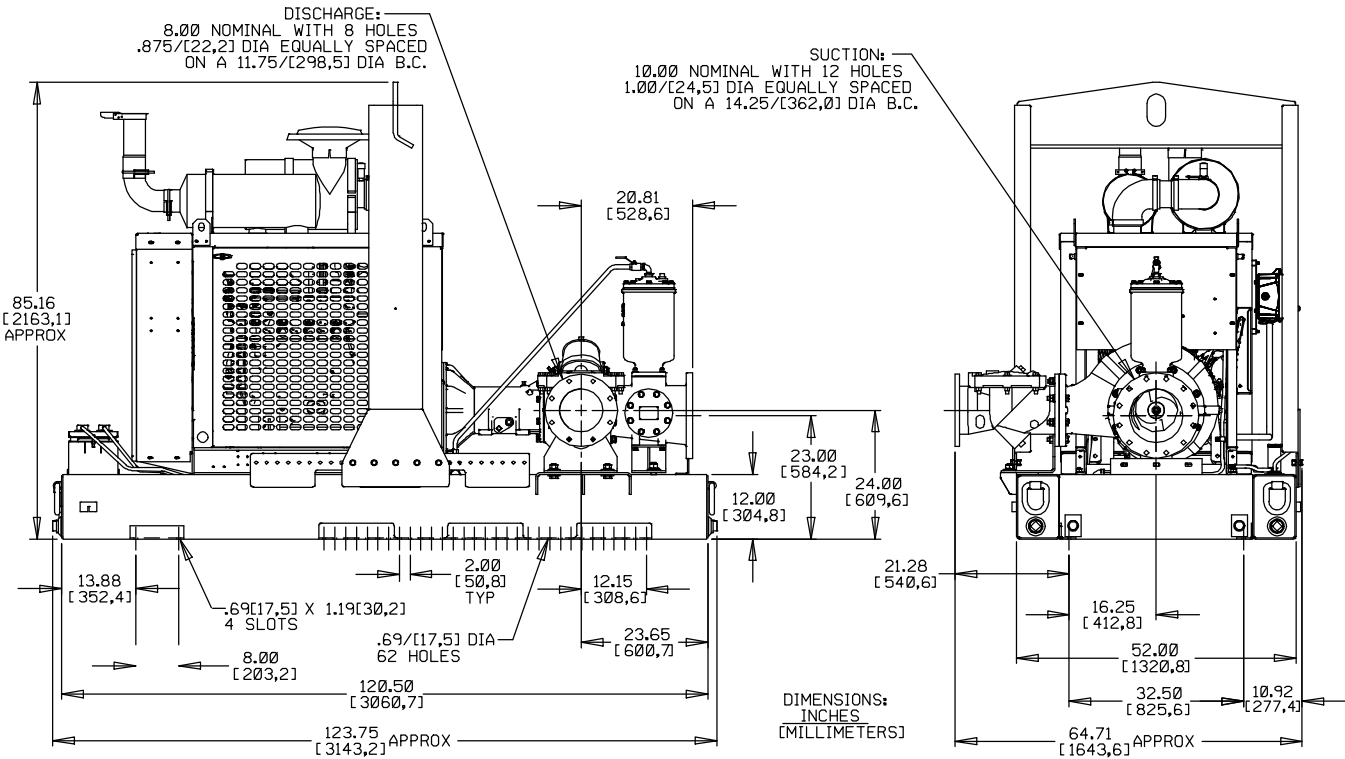
Specification Data

SECTION 43, PAGE 420

APPROXIMATE
DIMENSIONS and WEIGHTS

NET WEIGHT:
SHIPPING WEIGHT:
EXPORT CRATE SIZE:

5650 LBS. [2562,8 KG.]
5650 LBS. [2562,8 KG.]
455 CU. FT. (12,9 CU. M.)



GORMAN-RUPP PUMPS

www.grpumps.com

Specifications Subject to Change Without Notice

Printed in U.S.A.